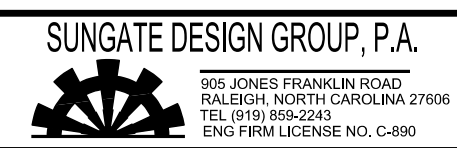


5/14/19



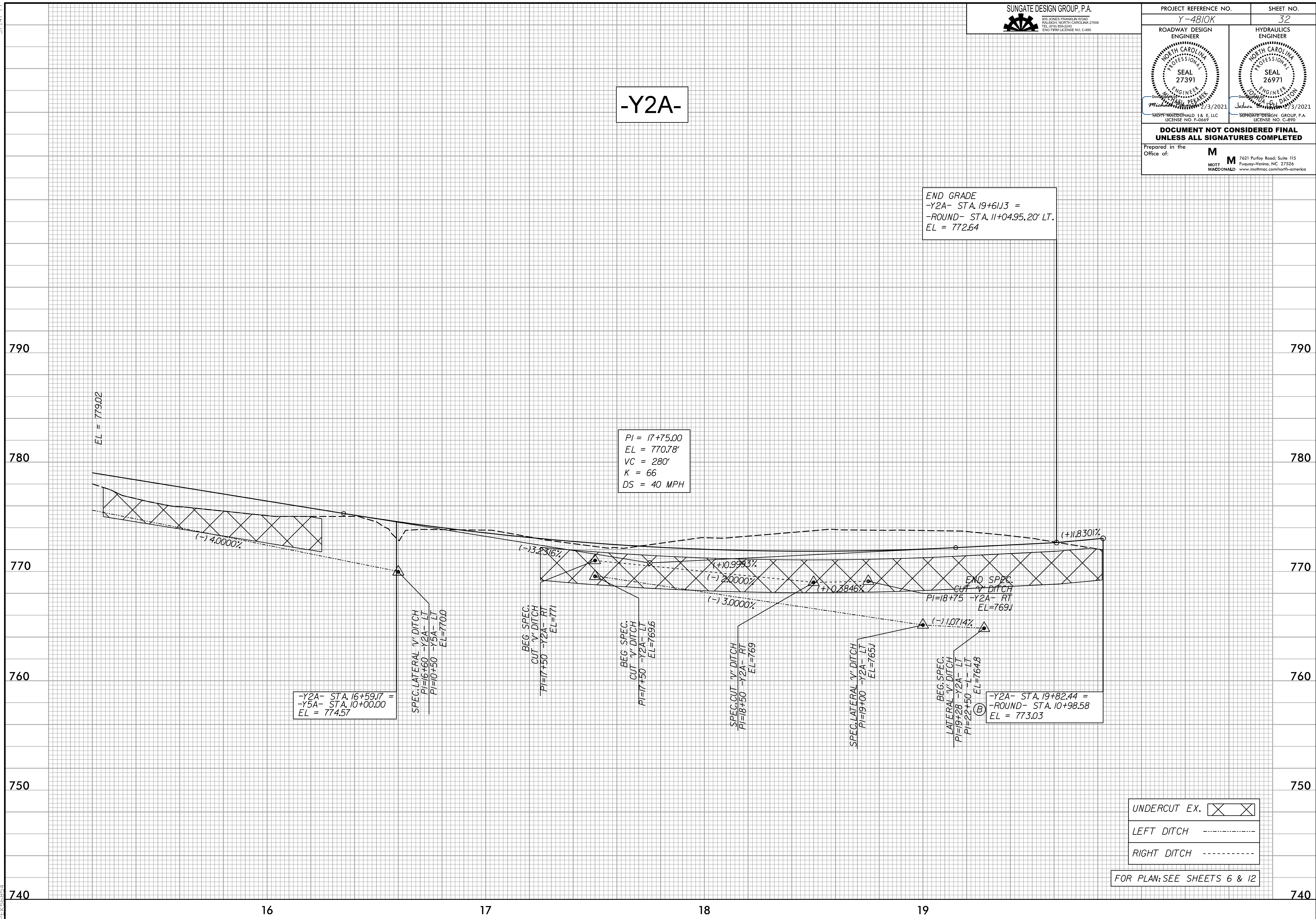
PROJECT REFERENCE NO. Y-4810K	SHEET NO. 32
ROADWAY DESIGN ENGINEER SEAL 27391 MOTT MACDONALD 1 & E, LLC LICENSE NO. F-06697	HYDRAULICS ENGINEER SEAL 26971 JESUVA DALTON SUNGATE DESIGN GROUP, P.A. LICENSE NO. C-890

**DOCUMENT NOT CONSIDERED FINAL
UNLESS ALL SIGNATURES COMPLETED**

Prepared in the Office of: **M**
MOTT MACDONALD 7621 Purfoy Road, Suite 115
Fuquay-Varina, NC 27526
www.mottmac.com/north-america

-Y2A-

END GRADE
-Y2A- STA. 19+61.13 =
-ROUND- STA. 11+04.95, 20' LT.
EL = 772.64



PI = 17+75.00
EL = 770.78'
VC = 280'
K = 66
DS = 40 MPH

-Y2A- STA. 16+59.17 =
-Y5A- STA. 10+00.00
EL = 774.57

SPEC. LATERAL 'V' DITCH
PI=16+60 -Y2A- LT
PI=10+50 -Y5A- LT
EL=7700

BEG. SPEC. CUT 'V' DITCH
PI=17+50 -Y2A- RT
EL=771

BEG. SPEC. CUT 'V' DITCH
PI=17+50 -Y2A- LT
EL=7696

SPEC. CUT 'V' DITCH
PI=18+50 -Y2A- RT
EL=769

SPEC. LATERAL 'V' DITCH
PI=19+00 -Y2A- LT
EL=7651

BEG. SPEC. LATERAL 'V' DITCH
PI=19+28 -Y2A- LT
PI=22+50 -L- LT
EL=7648

-Y2A- STA. 19+82.44 =
-ROUND- STA. 10+98.58
EL = 773.03

UNDERCUT EX.

LEFT DITCH

RIGHT DITCH

FOR PLAN: SEE SHEETS 6 & 12

4:34:55 PM
4:\Projects\4810K\Drawings\Y4810K_rdy.pfl.psh.dgn
PEK368874