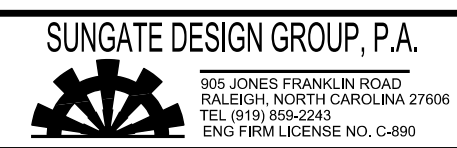


5/14/99

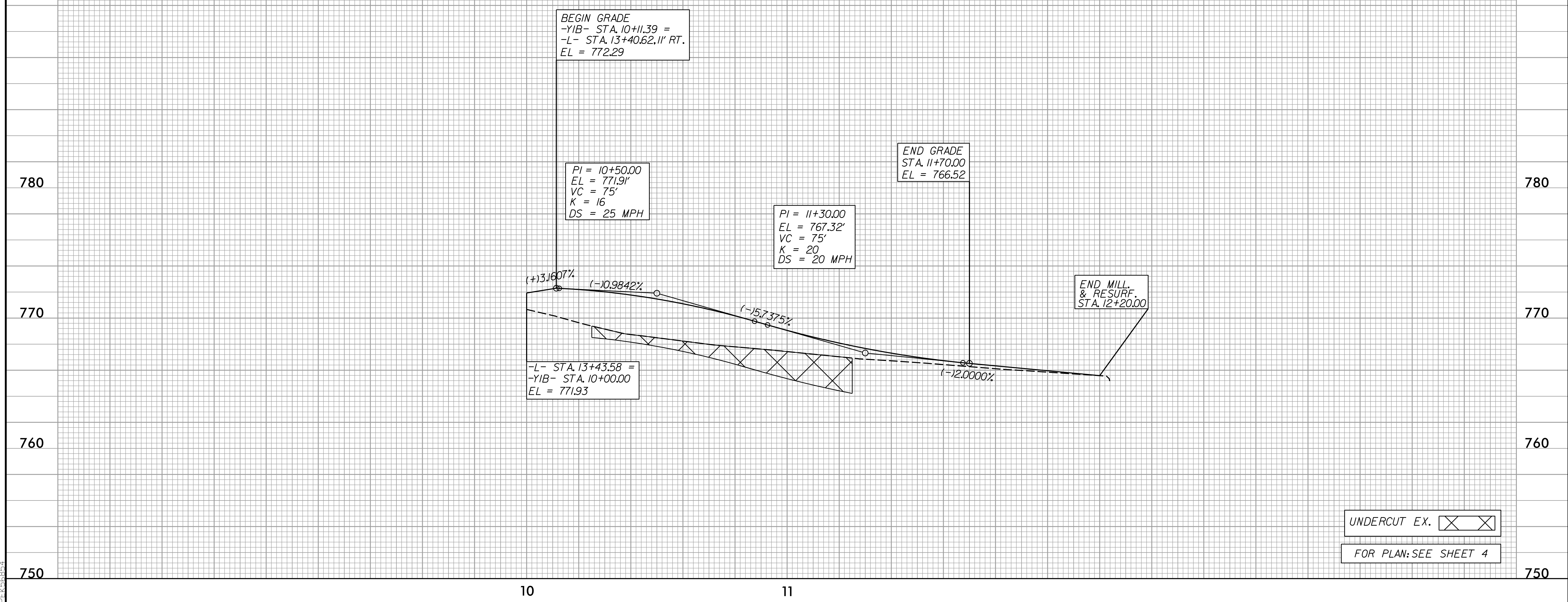


PROJECT REFERENCE NO. <b>Y-4810K</b>	SHEET NO. <b>30</b>
ROADWAY DESIGN ENGINEER <b>SEAL 27391</b> MOTT MACDONALD 1 & E, LLC LICENSE NO. F-06697	HYDRAULICS ENGINEER <b>SEAL 26971</b> JESUVA DALTON SUNGATE DESIGN GROUP, P.A. LICENSE NO. C-890

**DOCUMENT NOT CONSIDERED FINAL UNLESS ALL SIGNATURES COMPLETED**

Prepared in the Office of: **M**  
MOTT MACDONALD 7621 Purfoy Road, Suite 115, Fuquay-Varina, NC 27526  
www.mottmac.com/north-america

**-Y1B-**



UNDERCUT EX.

FOR PLAN: SEE SHEET 4

4:34:54 PM  
4:\Projects\4810K\Drawings\Profile\Y1B\p1.dwg  
PEK:668874

10

11

750

760

770

780