

5/14/99

SUNGATE DESIGN GROUP, P.A.
925 JONES FRANKLIN ROAD
RALEIGH, NORTH CAROLINA 27606
TEL: (919) 893-2241
ENG. FIRM LICENSE NO. C-890

PROJECT REFERENCE NO. Y-4810K	SHEET NO. 26
ROADWAY DESIGN ENGINEER SEAL 27391 MOTT MACDONALD 1 & E, LLC LICENSE NO. F-06697	HYDRAULICS ENGINEER SEAL 26971 MOTT MACDONALD 1 & E, LLC LICENSE NO. C-890

**DOCUMENT NOT CONSIDERED FINAL
UNLESS ALL SIGNATURES COMPLETED**

Prepared in the Office of: **M**
MOTT MACDONALD 7621 Purfoy Road, Suite 115
Fuquay-Varina, NC 27526
www.mottmac.com/north-america

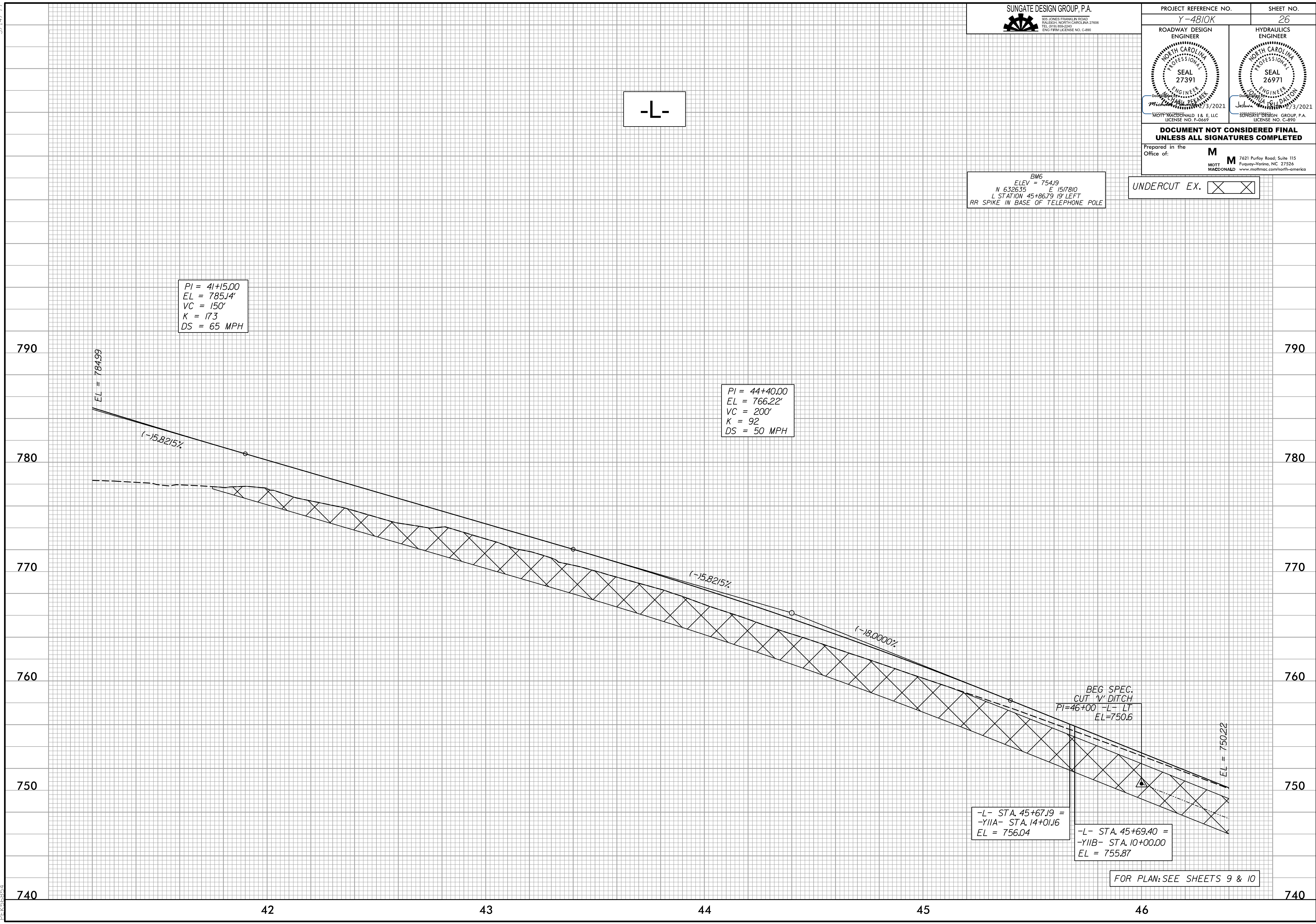
-L-

BM6
ELEV = 754.19
N 632635 E 1517810
L STATION 45+86.79 19' LEFT
RR SPIKE IN BASE OF TELEPHONE POLE

UNDERCUT EX.

PI = 41+15.00
EL = 785.14'
VC = 150'
K = 173
DS = 65 MPH

PI = 44+40.00
EL = 766.22'
VC = 200'
K = 92
DS = 50 MPH



4:34:53 PM
4:\Projects\4810K\Drawings\Profile\4810K_rdy.pfl.psh.dgn
PEK368874