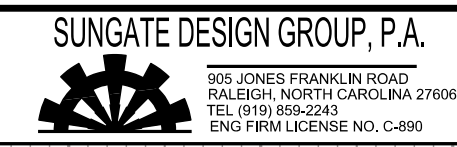


5/14/99



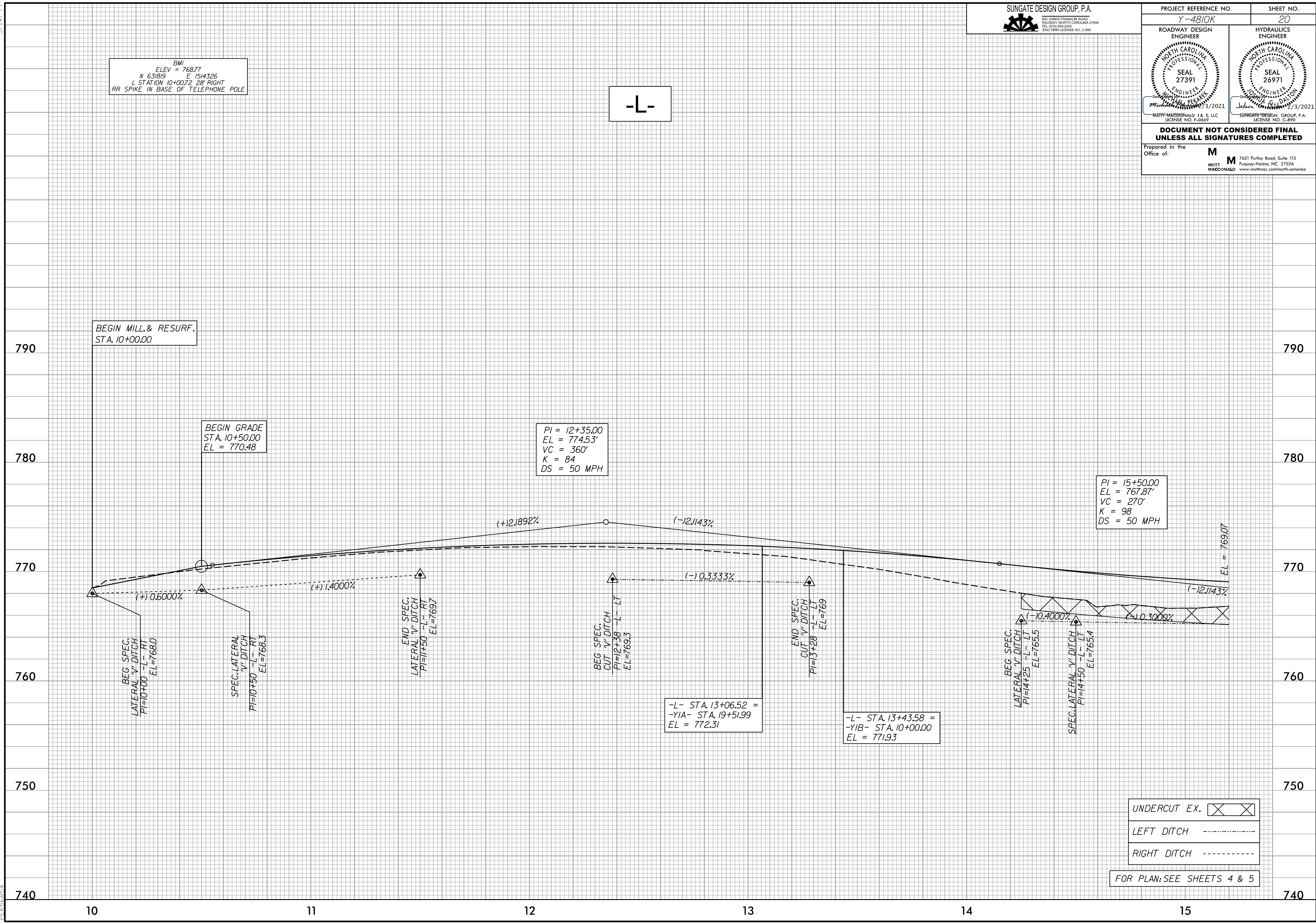
PROJECT REFERENCE NO. Y-4810K	SHEET NO. 20
ROADWAY DESIGN ENGINEER SEAL 27391	HYDRAULICS ENGINEER SEAL 26971

DOCUMENT NOT CONSIDERED FINAL UNLESS ALL SIGNATURES COMPLETED

Prepared in the Office of: **M** MOTT MACDONALD
 7621 Purfoy Road, Suite 115
 Fuquay-Varina, NC 27526
 www.mottmac.com/north-america

BMI
 ELEV = 768.77
 N 63.819' E 151.4326'
 L STATION 10+00.72 28' RIGHT
 RR SPIKE IN BASE OF TELEPHONE POLE

-L-



BEGIN MILL. & RESURF.
 STA. 10+00.00

BEGIN GRADE
 STA. 10+50.00
 EL = 770.48

PI = 12+35.00
 EL = 774.53'
 VC = 360'
 K = 84
 DS = 50 MPH

PI = 15+50.00
 EL = 767.87'
 VC = 270'
 K = 98
 DS = 50 MPH

BEG. SPEC.
 LATERAL V-DITCH
 PI=10+00 -L- RT
 EL=768.0

SPEC. LATERAL
 V-DITCH
 PI=10+50 -L- RT
 EL=768.3

END SPEC.
 LATERAL V-DITCH
 PI=11+50 -L- RT
 EL=769.7

BEG. SPEC.
 CUT V-DITCH
 PI=12+38 -L- LT
 EL=769.3

END SPEC.
 CUT V-DITCH
 PI=13+28 -L- LT
 EL=769

BEG. SPEC.
 LATERAL V-DITCH
 PI=14+25 -L- LT
 EL=765.5

SPEC. LATERAL V-DITCH
 PI=14+50 -L- LT
 EL=765.4

-L- STA. 13+06.52 =
 -YIA- STA. 19+51.99
 EL = 772.31

-L- STA. 13+43.58 =
 -YIB- STA. 10+00.00
 EL = 771.93

EL = 769.07

UNDERCUT EX.	
LEFT DITCH	
RIGHT DITCH	

FOR PLAN: SEE SHEETS 4 & 5

4/3/05 1PM
 P:\Projects\Y4810K\rdj\pfl\psh.dgn
 PK:568824