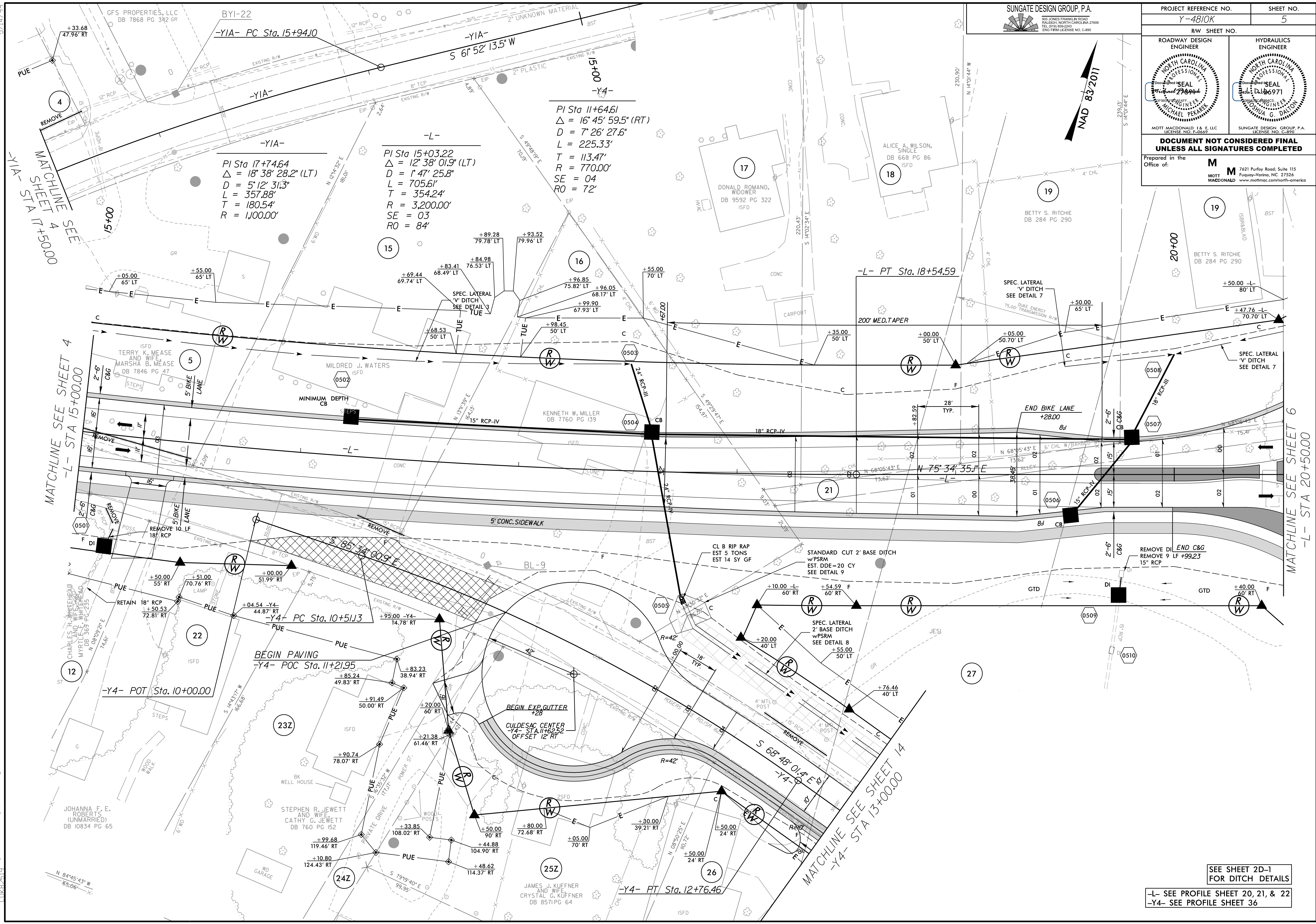


9:47:04 AM R:\P\4810K\1\4810K_rdy_psh_05.dgn 5/14/99

PROJECT REFERENCE NO. Y-4810K		SHEET NO. 5	
RW SHEET NO.			
ROADWAY DESIGN ENGINEER Michael P. Pappas NORTH CAROLINA PROFESSIONAL SEAL LICENSE NO. 74697		HYDRAULICS ENGINEER Julia G. Dalton NORTH CAROLINA PROFESSIONAL SEAL LICENSE NO. 58971	
DOCUMENT NOT CONSIDERED FINAL UNLESS ALL SIGNATURES COMPLETED			
Prepared in the Office of: M MOTT MACDONALD 1 & E, LLC Fuquay-Varina, NC 27526 www.mottmac.com/north-carolina			



PI Sta 11+64.61
 $\Delta = 16^{\circ} 45' 59.5''$ (RT)
 $D = 7^{\circ} 26' 27.6''$
 $L = 225.33'$
 $T = 113.47'$
 $R = 770.00'$
 $SE = 04$
 $RO = 72'$

PI Sta 17+74.64
 $\Delta = 18^{\circ} 38' 28.2''$ (LT)
 $D = 5^{\circ} 12' 31.3''$
 $L = 357.88'$
 $T = 180.54'$
 $R = 1,100.00'$

PI Sta 15+03.22
 $\Delta = 12^{\circ} 38' 01.9''$ (LT)
 $D = 1^{\circ} 47' 25.8''$
 $L = 705.61'$
 $T = 354.24'$
 $R = 3,200.00'$
 $SE = 03$
 $RO = 84'$

SEE SHEET 2D-1 FOR DITCH DETAILS

-L- SEE PROFILE SHEET 20, 21, & 22
-Y4- SEE PROFILE SHEET 36