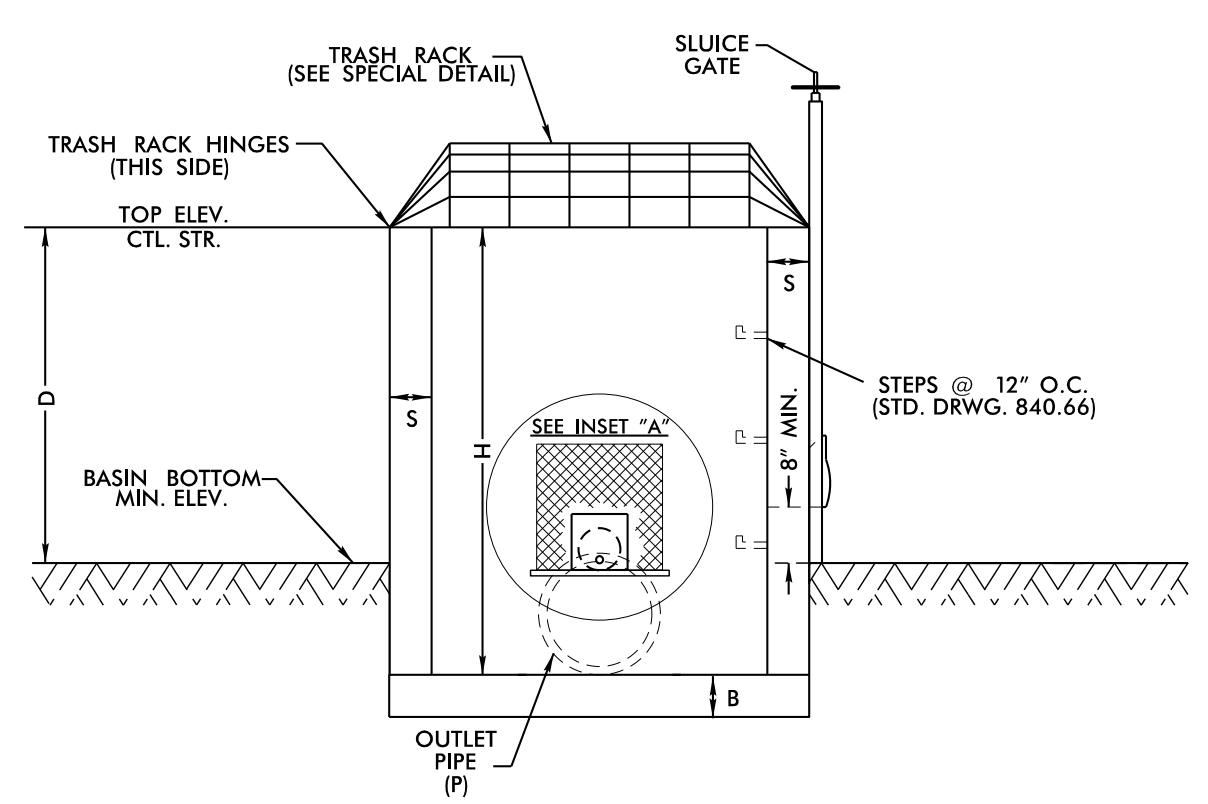


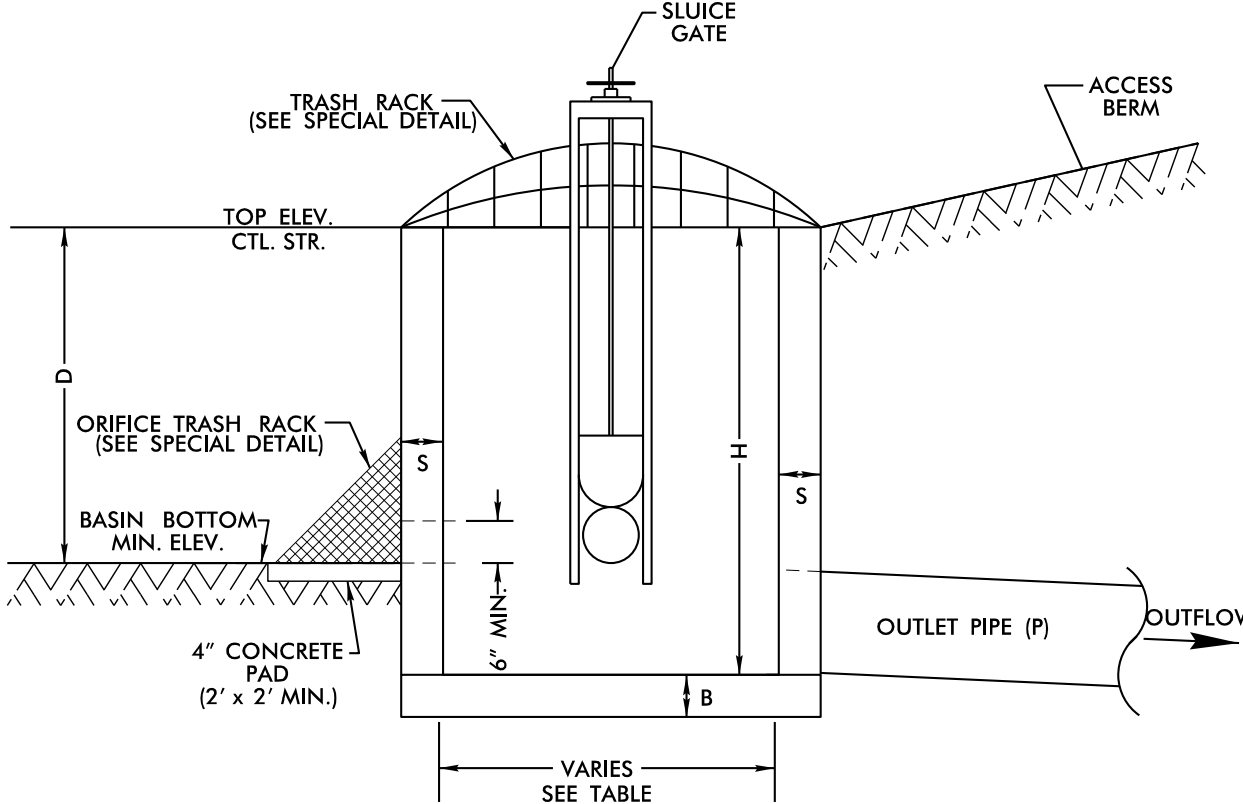
HYDRAULICS ENGINEER
DOCUMENT NOT CONSIDERED FINAL UNLESS ALL SIGNATURES COMPLETED

Prepared in the Office of: MOTT MACDONALD
7621 Purfoy Road, Suite 115
Fuquay-Varina, NC 27526
www.mottmac.com/north-america

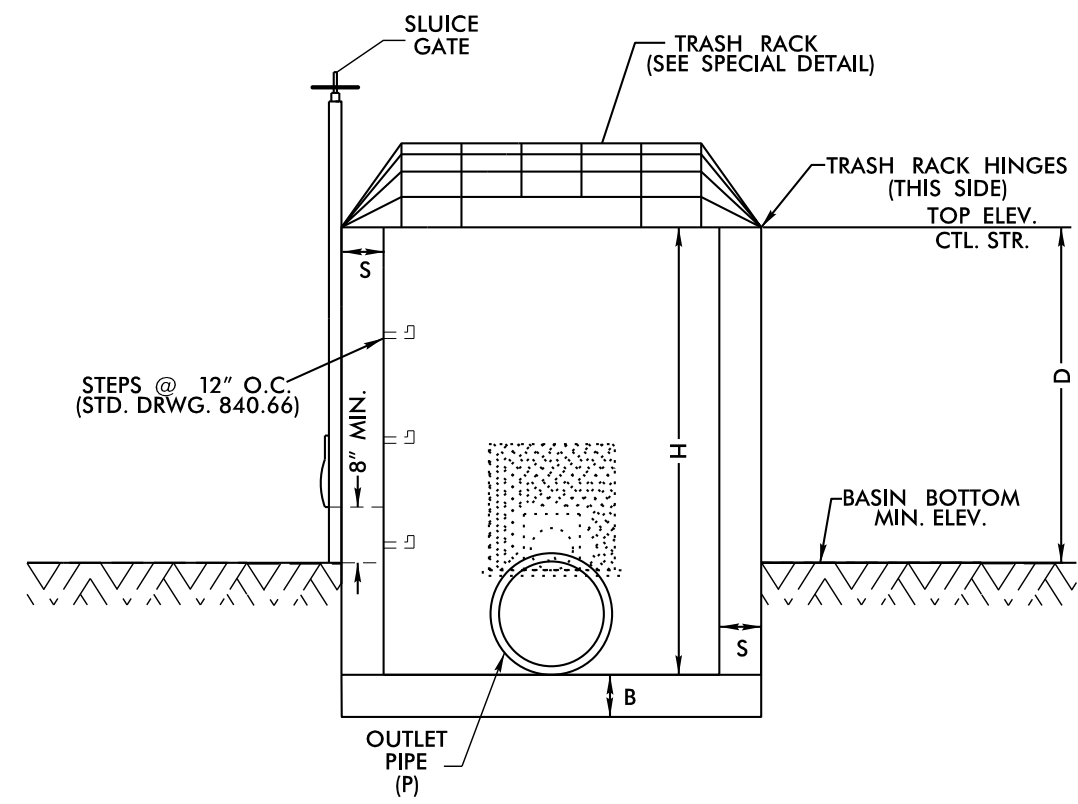
DETAIL 17
DRY DETENTION BASIN DRAWDOWN STRUCTURE
NOT TO SCALE



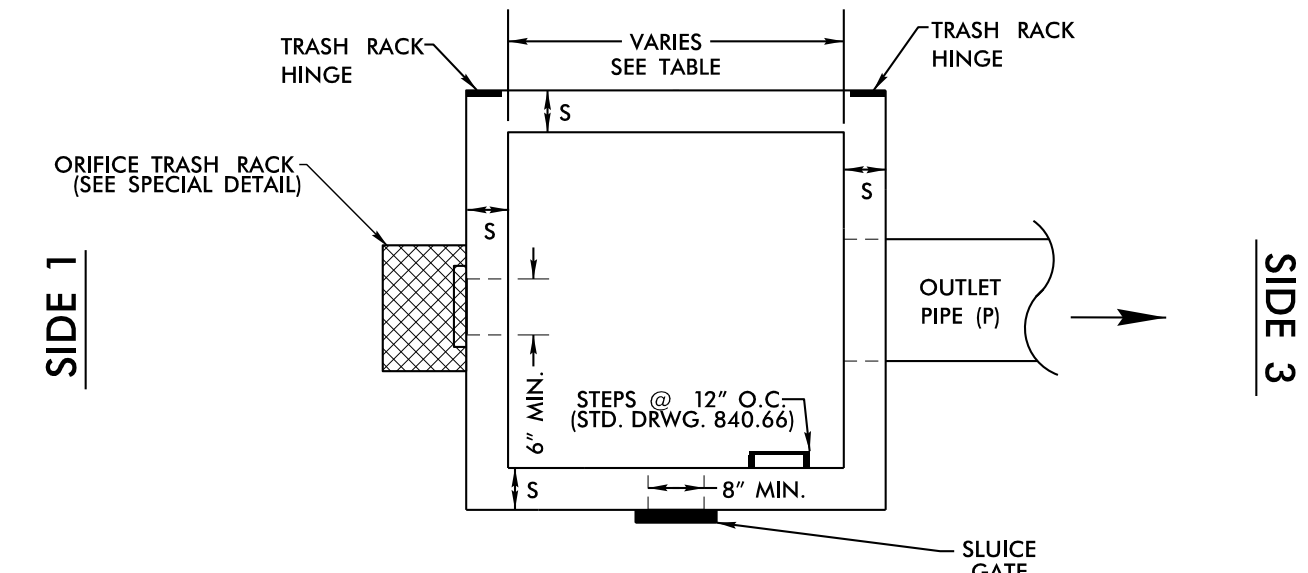
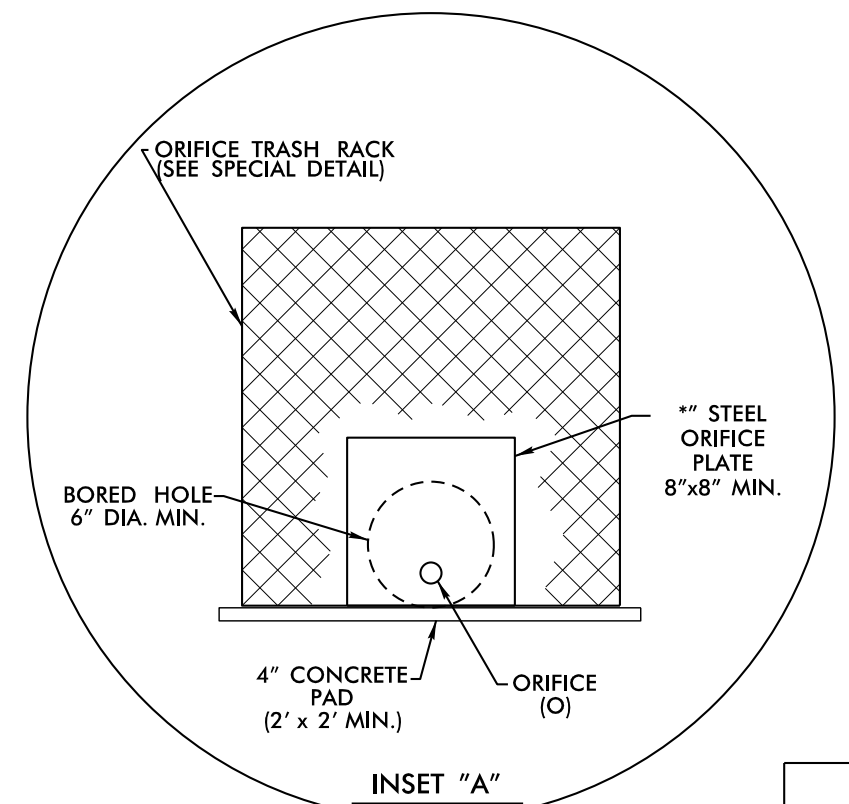
SIDE 1



SIDE 2



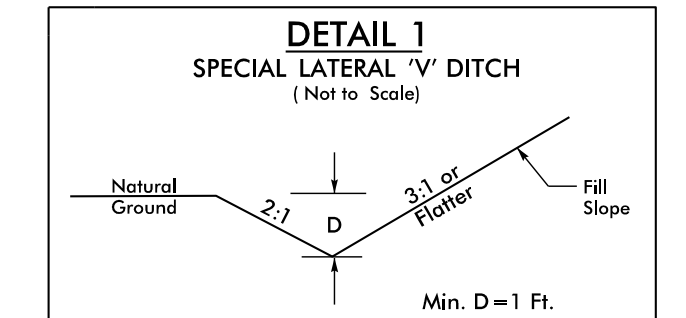
SIDE 3



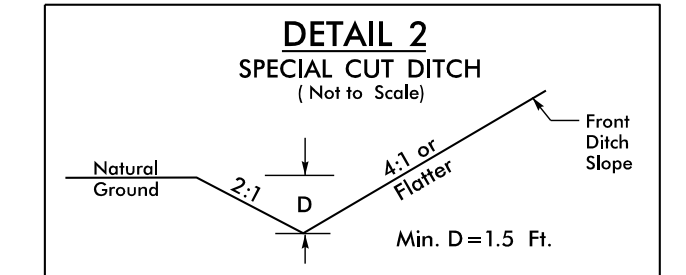
PLAN VIEW
TRASH RACK NOT SHOWN FOR CLARITY

- NOTES:
1. TOP ELEVATION OF CONTROL STRUCTURE (WEIR ELEVATION) SHOULD BE SET AT THE WQV ELEVATION.
2. 15" MINIMUM DIAMETER FOR OUTLET PIPE.
3. 2" MINIMUM DIAMETER ORIFICE. IF ORIFICE IS GREATER THAN 6", A STEEL PLATE IS NOT REQUIRED.
4. NO BEDDING MATERIAL TO BE USED. THEREFORE, DO NOT FOLLOW STANDARD DRAWINGS FOR METHOD OF PIPE INSTALLATION FOR OUTLET PIPE THROUGH EMBANKMENT.
5. SLUICE GATE IS FOR MAINTENANCE AND SHOULD REMAIN CLOSED DURING NORMAL OPERATION. A GATE VALVE MAY BE USED IN LIEU OF THE 8" SLUICE GATE.
6. SLUICE GATE SHALL PROVIDE WATERTIGHT SEAL. PROVIDE ADEQUATE CLEARANCE FOR GATE OPERATION AND FOR PROPER SEATING OF GATE OVER PIPE.
7. SELECT BOX STANDARD AS REQUIRED TO ACCOMMODATE SLUICE GATE AND ORIFICE TRASH RACK WIDTH.
8. ENSURE TRASH RACK OPENS FREELY AND WITHOUT INTERFERENCE WITH SLUICE GATE.
9. ADJUST FOOTER DIMENSIONS AS NEEDED FOR ANTI-FLOTATION.
10. PAYMENT OF THE TRASH RACKS ARE INCIDENTAL TO THE DRY DETENTION BASIN DRAWDOWN STRUCTURE.

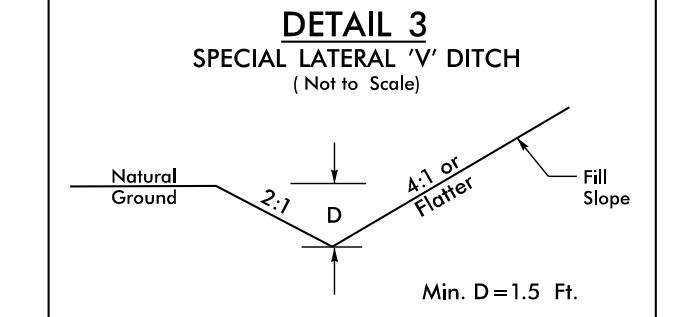
Table with 12 columns: STATION, STRUCTURE NUMBER, S (INCHES) 6" MIN., B (INCHES) 6" MIN., BASIN BOTTOM MINIMUM ELEV., TOP ELEVATION CONTROL STRUCTURE, MAX. STORAGE DEPTH (D) FEET, INV. ELEV. CTL. STR., CTL. STR. DIMENSIONS (W x L x H), ORIFICE DIAMETER (O) INCHES, ORIFICE INV. ELEV., OUTLET PIPE DIAMETER (P) INCHES. Row 1: 11+83 -Y2B- LT, 1501, 6, 12, 755.0, 758.0, 3, 754.5, 4x4x3.5, 6, 755.0, 24.



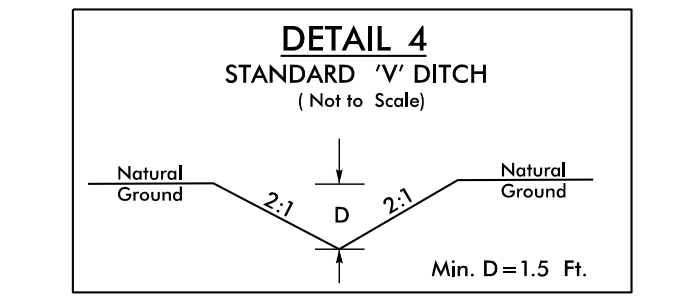
FROM STA. 10+00 -L- TO STA. 11+50 -L- RT
FROM STA. 12+70 -Y5B- TO STA. 14+00 -Y5B- RT



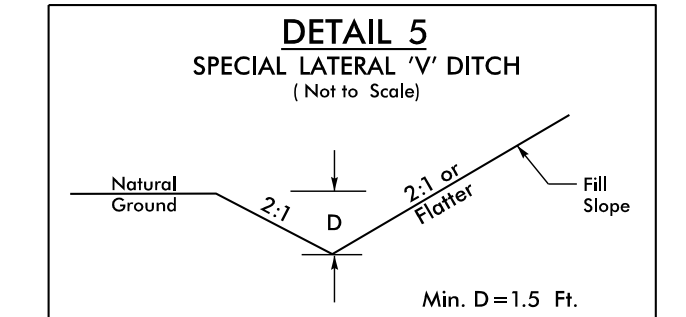
FROM STA. 12+38 -L- TO STA. 18+50 -Y1A- RT
FROM STA. 47+50 -L- TO STA. 49+00 -L- LT
FROM STA. 17+50 -Y2A- LT TO STA. 22+50 -L- LT
FROM STA. 17+30 -Y2A- TO STA. 18+50 -Y2A- RT
FROM STA. 18+50 -Y2A- TO STA. 18+75 -Y2A- RT
FROM STA. 16+50 -Y2C- TO STA. 18+00 -Y2C- RT
FROM STA. 10+24 -Y3- TO STA. 10+70 -Y3- LT



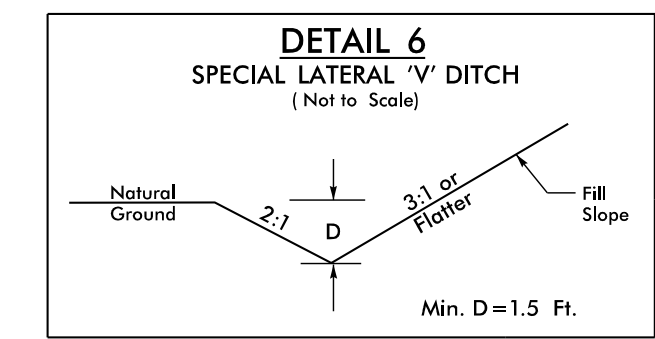
FROM STA. 14+25 -L- TO STA. 17+50 -L- LT
FROM STA. 13+75 -Y2A- TO STA. 15+00 -Y2A- RT
FROM STA. 10+50 -Y5A- TO STA. 11+35 -Y5A- RT
FROM STA. 13+00 -Y2A- LT TO STA. 10+50 -Y5A- LT
FROM STA. 12+00 -Y11A- TO STA. 13+00 -Y11A- RT



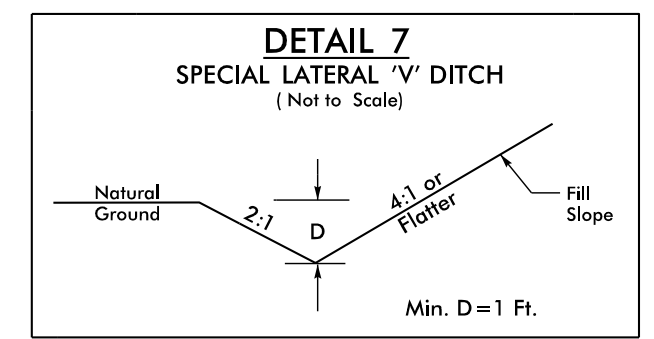
FROM STA. 16+20 -Y2A- TO STA. 17+00 -Y2A- RT
FROM STA. 40+72 -L- TO STA. 40+92 -L- LT
FROM STA. 12+20 -Y7- TO STA. 12+37 -Y7- RT
FROM STA. 12+75 -Y7- TO STA. 12+90 -Y7- RT
FROM STA. 13+00 -Y11A- TO STA. 46+00 -L- LT



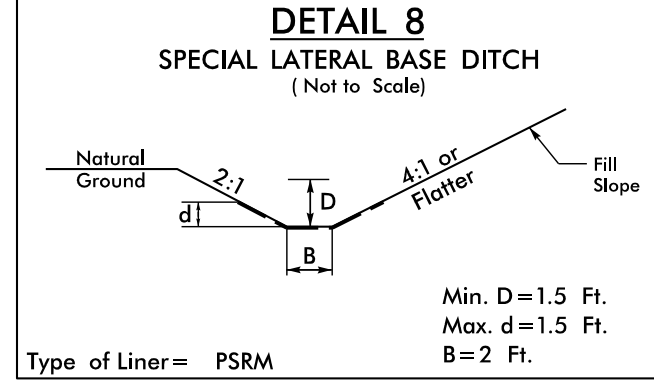
FROM STA. 22+50 -L- TO STA. 23+70 -L- LT
FROM STA. 23+70 -L- TO STA. 24+50 -L- LT



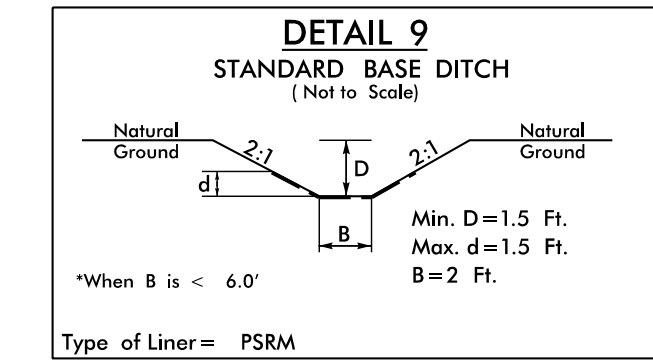
FROM STA. 12+65 -Y5B- TO STA. 14+75 -Y5B- LT



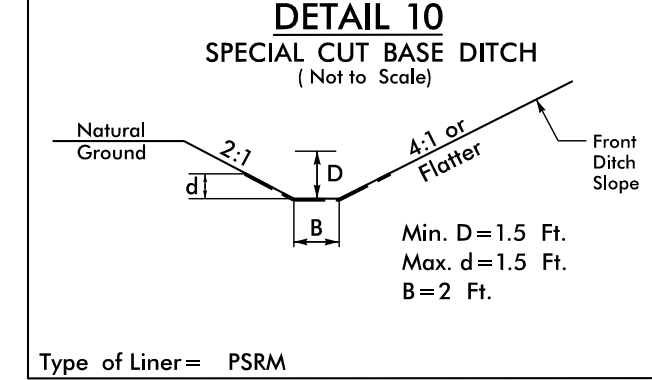
FROM STA. 19+50 -L- TO STA. 20+00 -L- LT
FROM STA. 20+00 -L- TO STA. 20+50 -L- LT



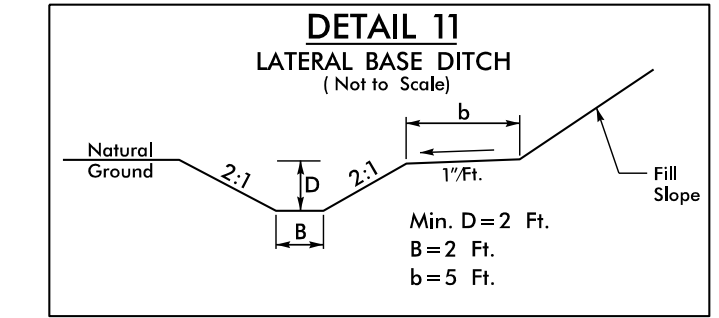
FROM STA. 12+00 -Y4- TO STA. 14+55 -Y4- LT
Type of Liner = PSRM
Min. D=1.5 Ft.
Max. d=1.5 Ft.
B=2 Ft.



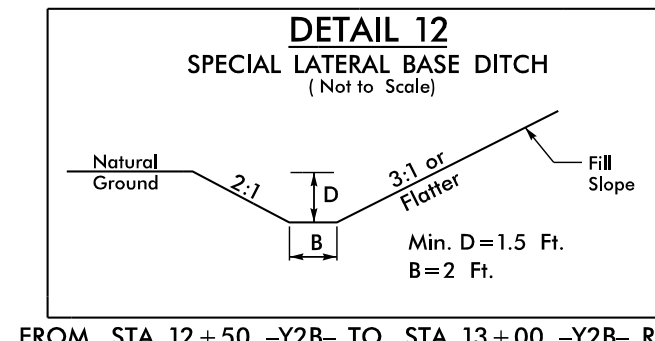
FROM STA. 17+70 -L- TO STA. 17+90 -L- RT
FROM STA. 12+34 -Y3- TO STA. 13+10 -Y3- RT
Type of Liner = PSRM
Min. D=1.5 Ft.
Max. d=1.5 Ft.
B=2 Ft.
*When B is < 6.0'



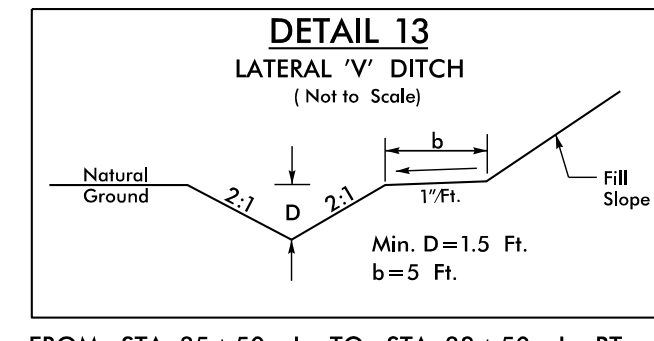
FROM STA. 17+00 -Y2C- TO STA. 20+00 -Y2C- LT
Type of Liner = PSRM
Min. D=1.5 Ft.
Max. d=1.5 Ft.
B=2 Ft.



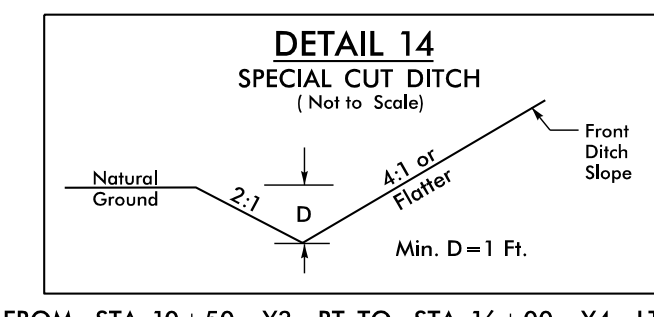
FROM STA. 26+50 -L- TO STA. 30+25 -L- LT
Min. D=2 Ft.
B=2 Ft.
b=5 Ft.



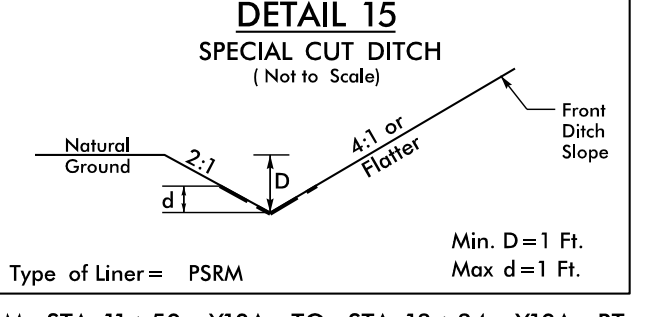
FROM STA. 12+50 -Y2B- TO STA. 13+00 -Y2B- RT



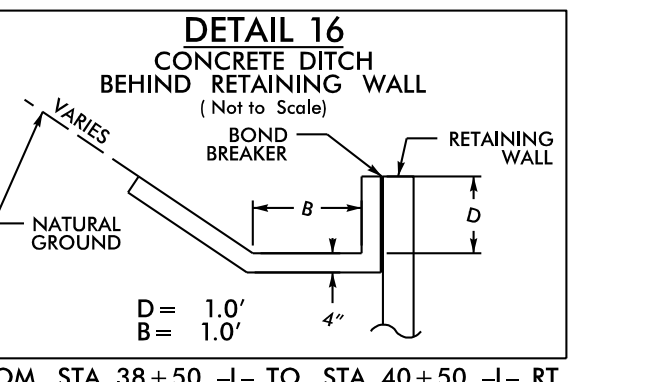
FROM STA. 35+50 -L- TO STA. 38+50 -L- RT
Min. D=1.5 Ft.
b=5 Ft.



FROM STA. 10+50 -Y3- RT TO STA. 16+00 -Y4- LT
FROM STA. 10+00 -Y9A- TO STA. 11+50 -Y9A- RT
Min. D=1 Ft.



FROM STA. 11+50 -Y10A- TO STA. 13+34 -Y10A- RT
Type of Liner = PSRM
Min. D=1 Ft.
Max. d=1 Ft.



FROM STA. 38+50 -L- TO STA. 40+50 -L- RT
D=1.0'
B=1.0'