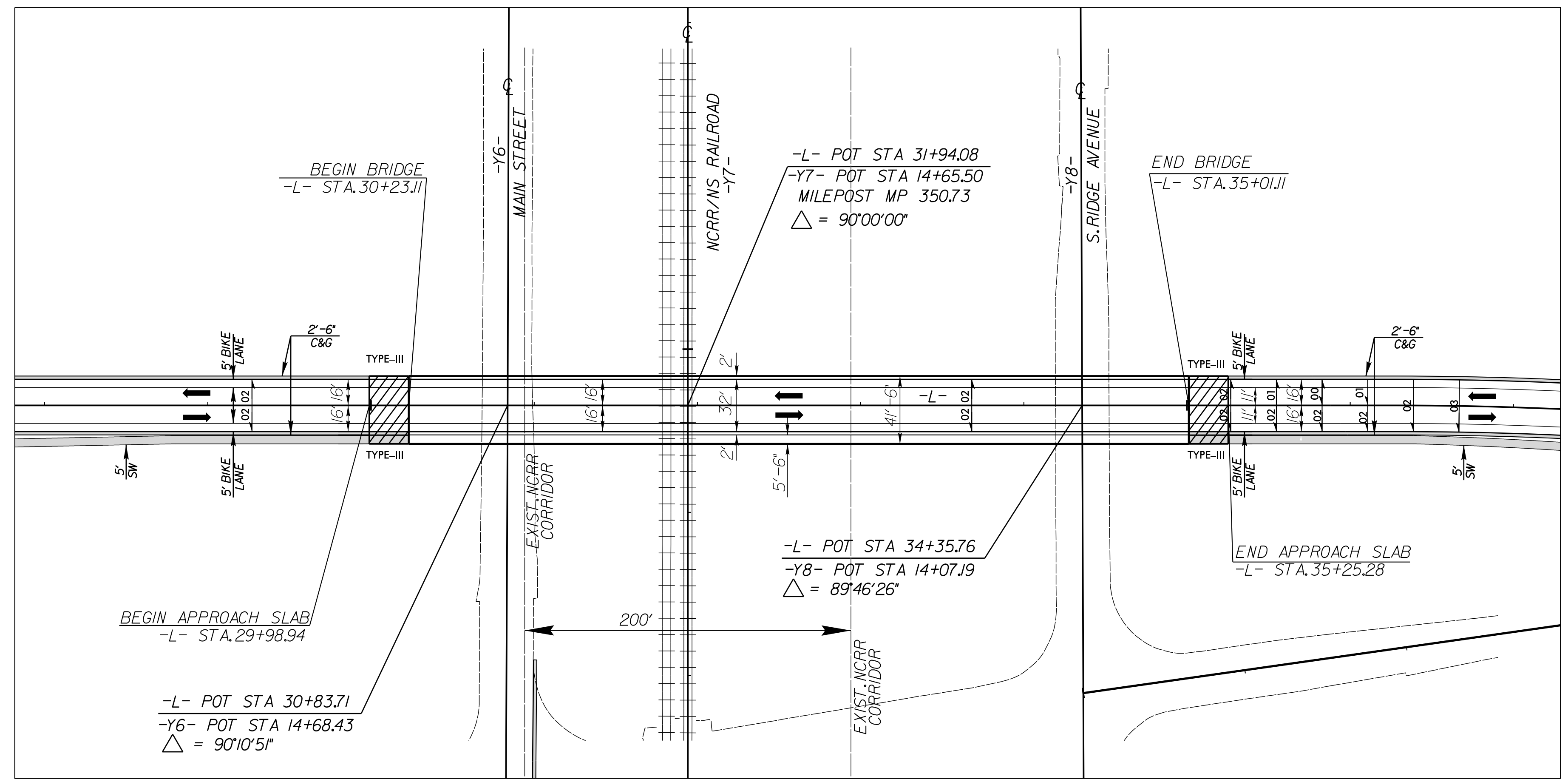


6/2/2019

|  |  |
|--|--|
| PROJECT REFERENCE NO.<br><b>Y-4810K</b>                                  | SHEET NO.<br><b>2B-2</b>   |
| ROADWAY DESIGN ENGINEER  |  |
|  |  |
| <b>DOCUMENT NOT CONSIDERED FINAL<br/>UNLESS ALL SIGNATURES COMPLETED</b> |  |
| Prepared in the Office of:   | <b>M</b><br>MOTT<br>MACDONALD<br>7621 Purfoy Road, Suite 115<br>Fuquay-Varina, NC 27526<br>www.mottmac.com/north-america |

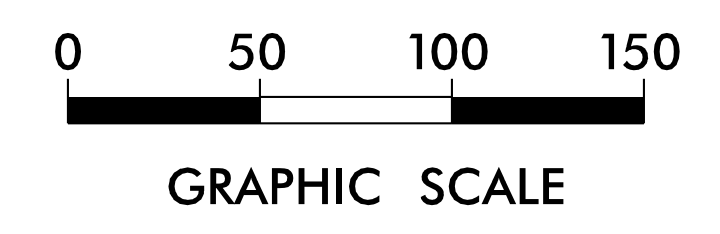
NAD 83/2011

# DETAIL SHOWING PAVEMENT – BRIDGE RELATIONSHIP



SR 1625-ROGERS LAKE ROAD OVER US 29A-MAIN STREET, RAILROAD, AND S. RIDGE AVENUE

FOR STRUCTURE PLANS, SEE SHEETS S-1 TO S-52  
FOR PLAN, SEE SHEET NO. 7 & 8



10/2/06 PM  
C:\Users\psh\_02B-2\Documents\Projects\Y4810K\rdj\_psh\_02B-2\Bridge\_Detail.dgn  
PEK56854