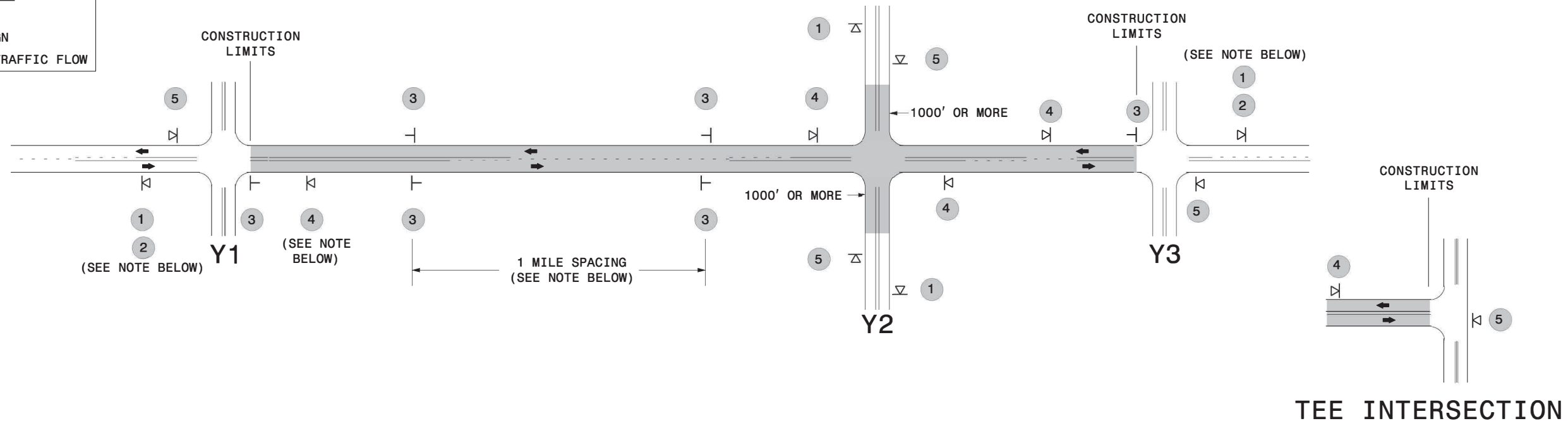


SIGNING FOR ASPHALT SURFACE TREATMENT

LEGEND

- ⏏ PORTABLE SIGN
- ┆ STATIONARY SIGN
- ➔ DIRECTION OF TRAFFIC FLOW



MAINLINE (-L-) SIGNING

-Y- LINE SIGNING

SIGNING NOTES AND PLACEMENT PER DIRECTION	1	 	<ul style="list-style-type: none"> - PLACE 1000' PRIOR TO BEGINNING OF CONSTRUCTION LIMITS. ONLY USED ON -Y- LINES IF RESURFACING LIMITS EXTEND 1000' ALONG -Y- LINE. - SIGN #2 ONLY USED WHEN RESURFACING LIMITS ARE 2 OR MORE MILES IN LENGTH. ROUND UP TO THE NEAREST WHOLE NUMBER. DO NOT USE FRACTIONAL OR DECIMAL NUMBERS. 	<p>STATIONARY SIGNING NOT REQUIRED FOR THE FOLLOWING -Y- LINE CONDITIONS:</p> <ol style="list-style-type: none"> 1) LESS THAN 1000' OF RESURFACING ALONG -Y- LINE 2) SUBDIVISION ROADS 3) DEAD END ROADS <p>WHEN PAVING/CONSTRUCTION ACTIVITIES PROCEED ACROSS AN UNSIGNED -Y- LINE, PORTABLE ADVANCE WARNING SIGNS SHALL BE USED ALONG THE -Y- LINE AS SHOWN BELOW. REMOVE UPON COMPLETION OF WORK.</p> <div style="display: flex; justify-content: space-around; align-items: center;"> <div style="text-align: center;"> <small>W20-1 48" X 48"</small> PLACED 500' IN ADVANCE OF FLAGGER. </div> <div style="text-align: center;"> <small>W20-7 A 48" X 48"</small> PLACED 250' IN ADVANCE OF FLAGGER. </div> </div>
	2			
	3	 	<ul style="list-style-type: none"> - ALTERNATE THE FOLLOWING TWO SIGNS: - STARTING WITH "LOOSE GRAVEL" (W8-7) FOLLOWED BY "UNMARKED PAVEMENT". - PLACE INITIALLY AT THE CONSTRUCTION LIMITS AND SPACED 1 MILE APART THEREAFTER. - AT TEE INTERSECTIONS INSTALL INITIALLY 0.5 MILE FROM INTERSECTION AND SPACE 1 MILE APART THEREAFTER. 	
	4		<ul style="list-style-type: none"> - THESE ARE FOR -Y- LINES THAT ARE "THROUGH" ROADWAYS. DEAD END AND SUBDIVISION ROADS ARE NOT "THROUGH" ROADWAYS. - INSTALL 500' +/- FROM EACH -Y- LINE APPROACH AS SHOWN ABOVE. - FOR MULTIPLE -Y- LINES THAT ARE SEPARATED BY 0.25 MILES OR LESS, TREAT AS A SINGLE UNIT AND INSTALL WITHIN 500' OF EACH APPROACH. - A MAXIMUM OF 2 SIGN SETS PER MILE. DO NOT INSTALL WHEN -Y- LINES ARE WITHIN 0.5 MILES FROM "END ROAD WORK" SIGN. 	
	5		<ul style="list-style-type: none"> - PLACE 500' FOLLOWING THE END OF CONSTRUCTION LIMITS OR AS SHOWN WHEN WORK ENDS AT A 3-WAY TEE INTERSECTION. 	

THE ABOVE SIGNS ARE ALL THAT ARE REQUIRED FOR A CONTRACTOR TO BEGIN A RESURFACING CONTRACT. ANY ADDITIONAL SIGNS REQUESTED BY NCDOT DIVISIONS SHALL BE INSTALLED WITHIN 7 BUSINESS DAYS OF THE START OF CONTRACT WORK.

MAPS LESS THAN 2 MILES

FOR AST RESURFACING MAPS WITH CONSTRUCTION LIMITS LESS THAN 2 MILES IN LENGTH, USE A STATIONARY "LOOSE GRAVEL" SIGN AT THE BEGINNING CONSTRUCTION LIMIT FOLLOWED BY AN "UNMARKED PAVEMENT" SIGN MIDWAY THROUGH AND AN "END ROAD WORK" SIGN AT THE END CONSTRUCTION LIMIT.

**ADVANCE WARNING SIGNS
FOR
2-LANE ROADWAY
ASPHALT SURFACE TREATMENT**

5/12/2017 S:\TMU\WZTC\Resurfacing\2L2\8 AST Resurfacing_Details\Resurfacing_AdvWarn_2Ln - AST.dgn User:tkedais