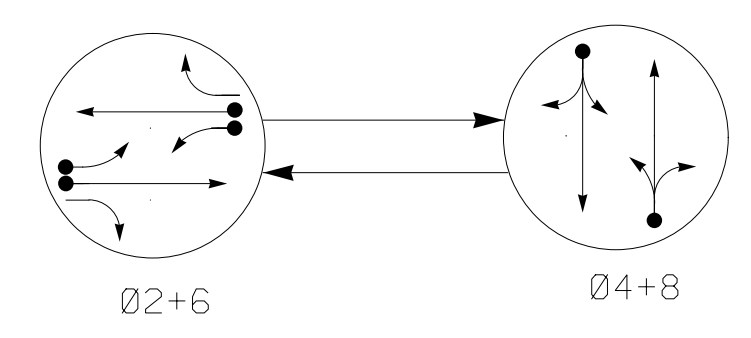


PHASING DIAGRAM



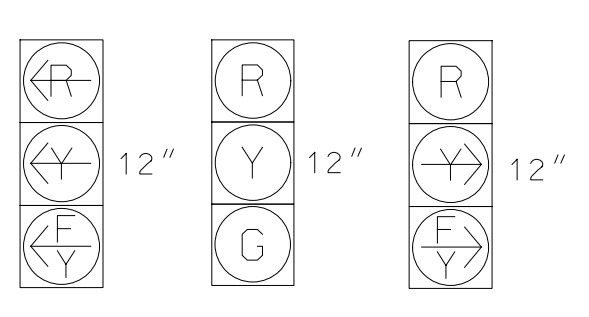
PHASING DIAGRAM DETECTION LEGEND

- DETECTED MOVEMENT
- UNDETECTED MOVEMENT (OVERLAP)
- UNSIGNALIZED MOVEMENT
- ⇄ PEDESTRIAN MOVEMENT

TABLE OF OPERATION

| SIGNAL FACE | PHASE | | |
|-------------|---------|---------|-----------|
| | Ø 2 + 6 | Ø 4 + 8 | F L S P H |
| 21 | Y | R | Y |
| 22, 23 | G | R | Y |
| 24 | Y | R | Y |
| 41, 42 | R | G | R |
| 61 | Y | R | Y |
| 62, 63 | G | R | Y |
| 64 | Y | R | Y |
| 81, 82 | R | G | R |

SIGNAL FACE I.D.
All Heads L.E.D.



21 61 22, 23 41, 42 62, 63 81, 82 24 64

DETECTOR INSTALLATION CHART

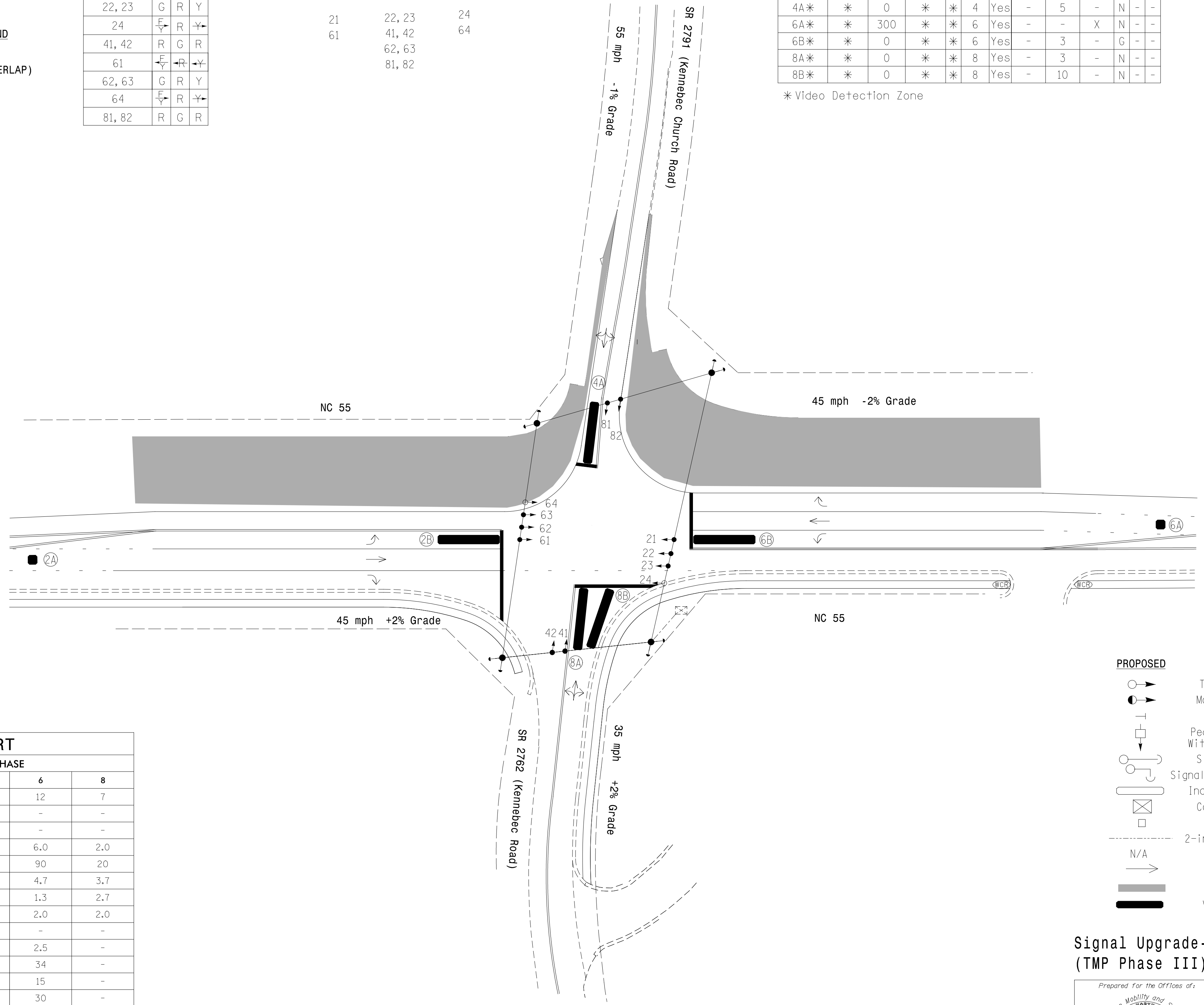
| ZONE | SIZE (FT) | DETECTOR | | | PROGRAMMING | | | | | | | |
|------|-----------|----------------------------|-------|----------|-------------|---------|-------------|------------|-------------------|------|-------------|----------|
| | | DISTANCE FROM STOPBAR (FT) | TURNS | NEW LOOP | PHASE | CALLING | EXTEND TIME | DELAY TIME | USE ADDED INITIAL | TYPE | SYSTEM LOOP | NEW CARD |
| 2A* | * | 300 | * | * | 2 | Yes | - | - | X | N | - | - |
| 2B* | * | 0 | * | * | 2 | Yes | - | 3 | - | G | - | - |
| 4A* | * | 0 | * | * | 4 | Yes | - | 5 | - | N | - | - |
| 6A* | * | 300 | * | * | 6 | Yes | - | - | X | N | - | - |
| 6B* | * | 0 | * | * | 6 | Yes | - | 3 | - | G | - | - |
| 8A* | * | 0 | * | * | 8 | Yes | - | 3 | - | N | - | - |
| 8B* | * | 0 | * | * | 8 | Yes | - | 10 | - | N | - | - |

* Video Detection Zone

2 Phase Fully Actuated Isolated

NOTES

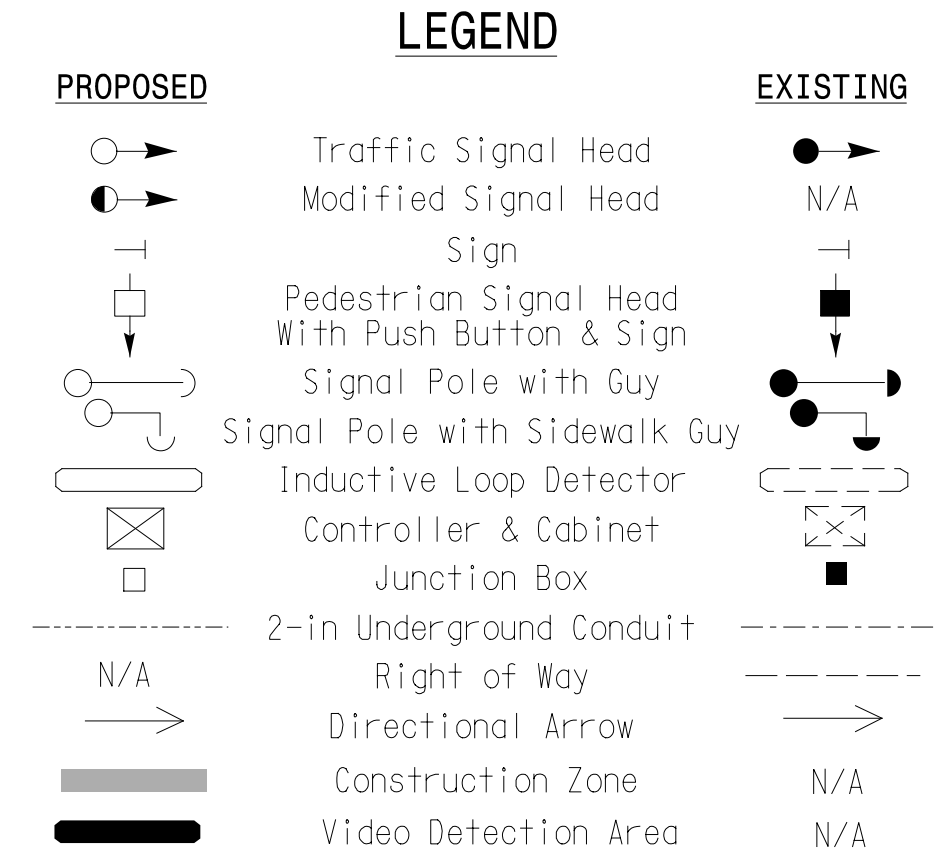
- Refer to "Roadway Standard Drawings NCDOT" dated January 2018 and "Standard Specifications for Roads and Structures" dated January 2018.
- Do not program signal for late night flashing operation unless otherwise directed by the Engineer.
- Set all detector units to presence mode.
- This intersection uses video detection. Install detectors according to the manufacturer's instructions to achieve the desired detection.
- Reposition all existing signal heads.



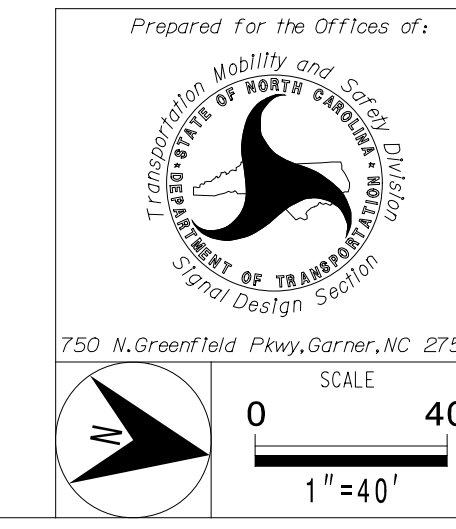
TIMING CHART

| FEATURE | PHASE | | | |
|-------------------------|------------|-----|------------|-----|
| | 2 | 4 | 6 | 8 |
| Min Green * | 12 | 7 | 12 | 7 |
| Walk * | - | - | - | - |
| Ped Clear | - | - | - | - |
| Veh. Extension * | 6.0 | 2.0 | 6.0 | 2.0 |
| Max 1 * | 90 | 20 | 90 | 20 |
| Yellow | 4.3 | 5.3 | 4.7 | 3.7 |
| Red Clear | 1.6 | 1.1 | 1.3 | 2.7 |
| Red Revert | 2.0 | 2.0 | 2.0 | 2.0 |
| Actuations B4 Add * | - | - | - | - |
| Seconds / Actuation * | 2.5 | - | 2.5 | - |
| Max Initial * | 34 | - | 34 | - |
| Time Before Reduction * | 15 | - | 15 | - |
| Time To Reduce * | 30 | - | 30 | - |
| Minimum Gap | 3.0 | - | 3.0 | - |
| Locking Detector | - | - | - | - |
| Recall Position | VEH RECALL | - | VEH RECALL | - |
| Dual Entry | - | X | - | X |
| Simultaneous Gap | X | X | X | X |

* These values may be field adjusted. Do not adjust Min Green and Extension times for phases 2 and 6 lower than what is shown. Min Green for all other phases should not be lower than 4 seconds.



Signal Upgrade-Temporary Design 2 (TMP Phase III)



| | |
|--|----------------------------|
| NC 55 at SR 2791 (Kennebec Church Road) and SR 2762 (Kennebec Road) | |
| Division 5 | Wake County Fuquay-Varina |
| PLAN DATE: July 2022 | REVIEWED BY: M. L. Stygles |
| PREPARED BY: J. Ma | REVIEWED BY: |
| REVISIONS | INIT. DATE |
| | |
| | |



DOCUMENT NOT CONSIDERED FINAL UNLESS ALL SIGNATURES COMPLETED

SEAL

STATE OF NORTH CAROLINA PROFESSIONAL ENGINEER SEAL 033108

DATE: 7/12/2022

SIG. INVENTORY NO. 05-1698T2