

PHASING DIAGRAM

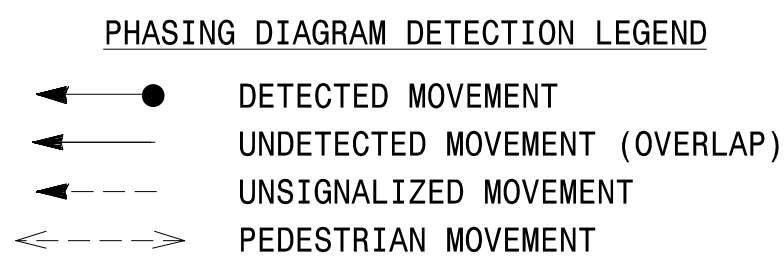
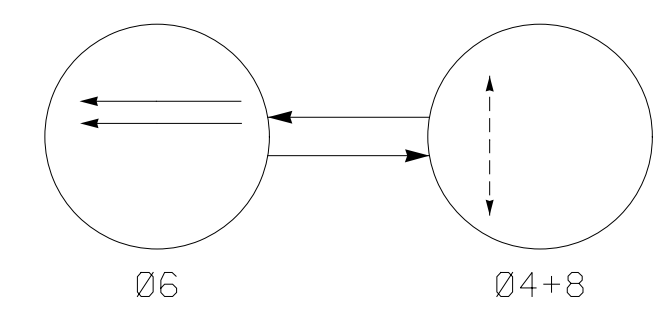


TABLE OF OPERATION

SIGNAL FACE	PHASE							
	Ø6 DARK	ACTIVATION	STEADY YELLOW	ALL RED	Ø4+8 PED	Ø4+8 PED	FLASH	
61, 62	DRK	FY	Y	R	R	FR*	Y	
P41	DW	DW	DW	DW	W	FDW	DRK	
P81	DW	DW	DW	DW	W	FDW	DRK	

* ALTERNATING FLASH

- FY - STEADY YELLOW
- FR - FLASHING YELLOW
- R - STEADY RED
- FR - FLASHING RED
- W - WALK
- DW - DON'T WALK
- FDW - FLASHING DON'T WALK
- DRK - DARK

SIGNAL FACE I.D.
All Heads L.E.D.

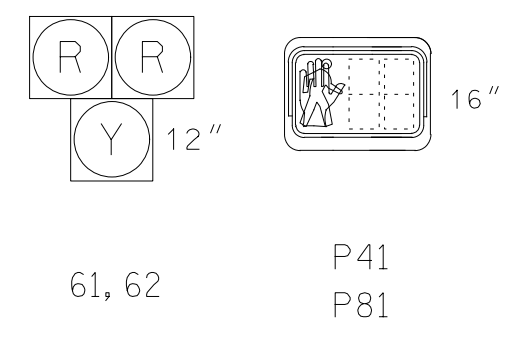
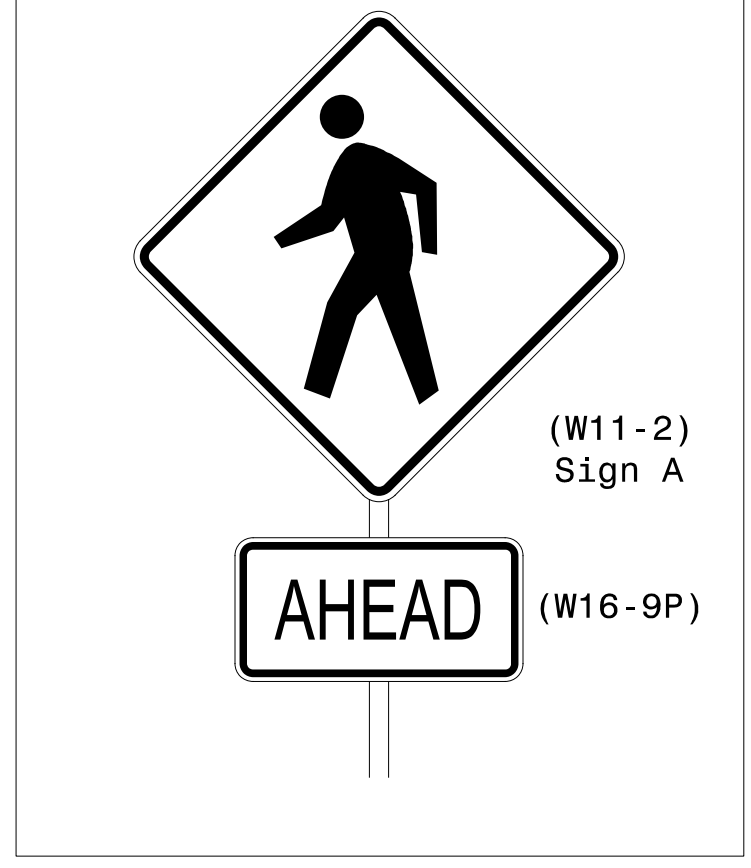


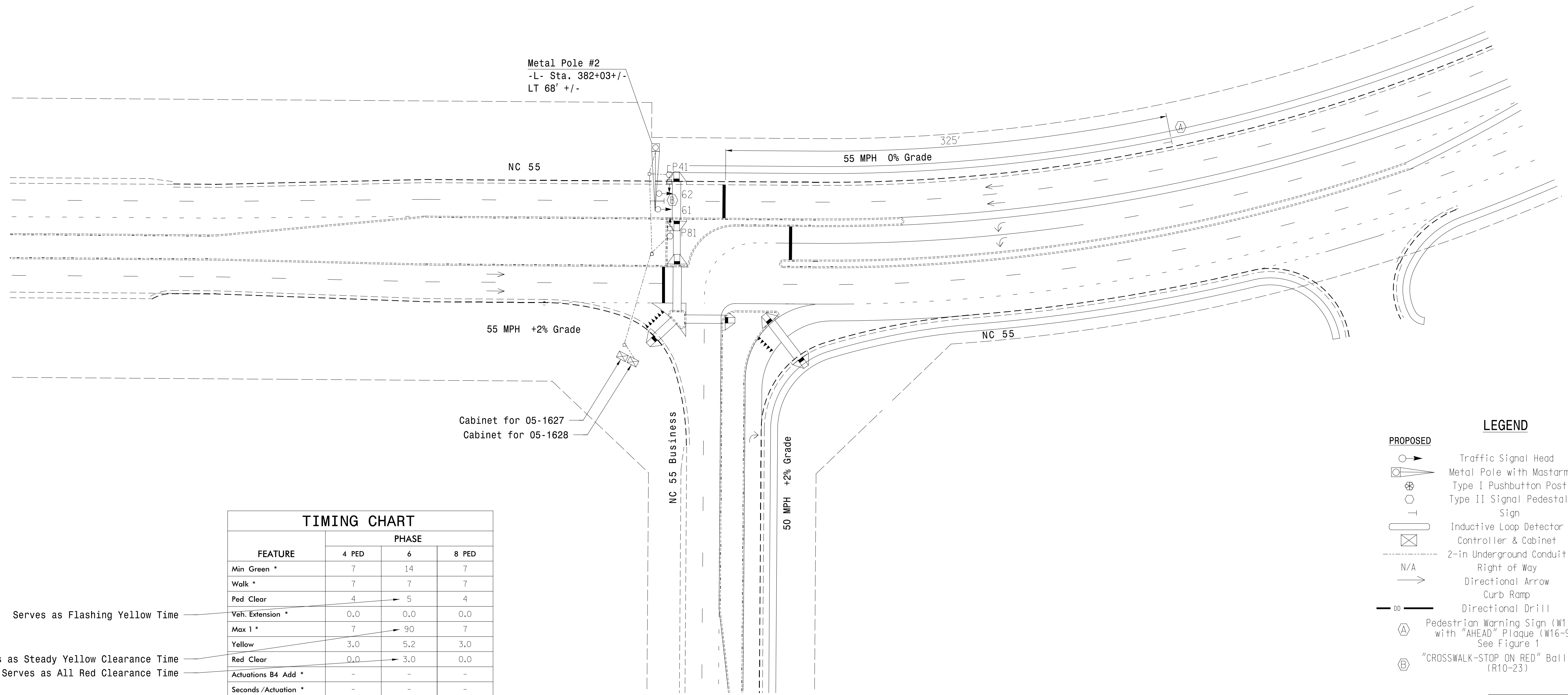
Figure 1



2 Phase Semi-Actuated Pedestrian Hybrid Beacon
NC 55 - Fuquay-Varina
Signal System #: D05-48_Fuquay-Varina

NOTES

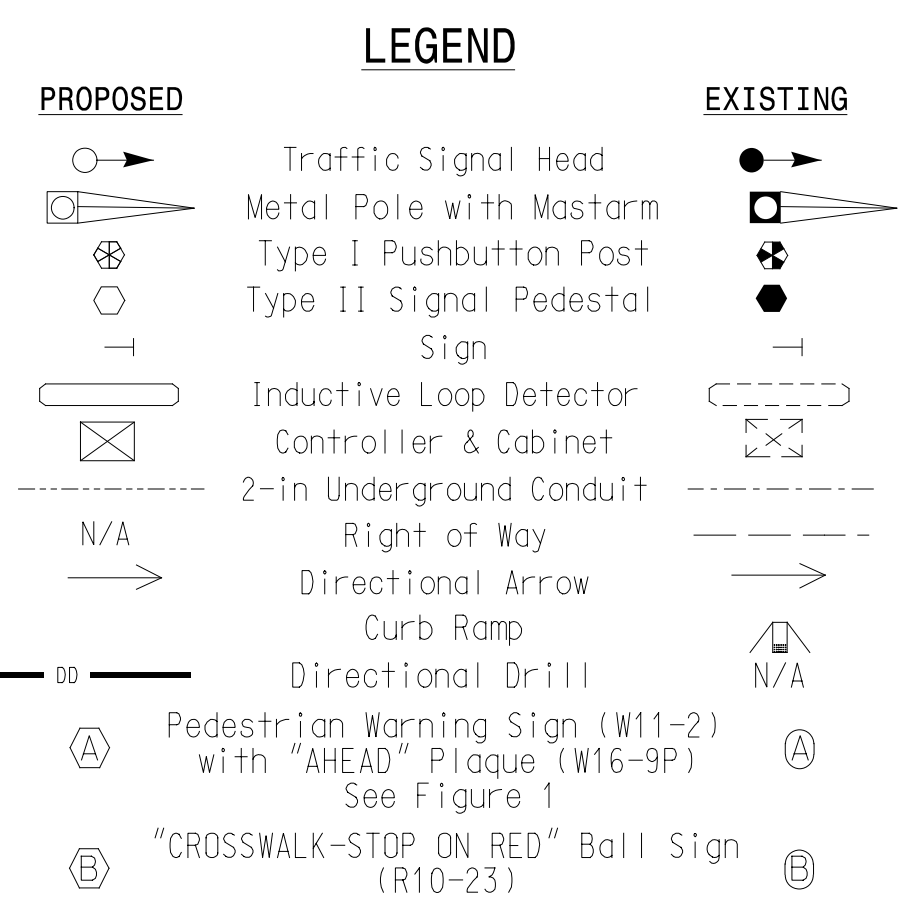
- Refer to "Roadway Standard Drawings NCDOT" dated January 2018 and "Standard Specifications for Roads and Structures" dated January 2018.
- Program pedestrian heads to countdown the flashing "Don't Walk" time only.
- Locate new cabinet so as not to obstruct sight distance of vehicles turning right on red.
- Maximum times shown in timing chart are for free-run operation only. Coordinated signal system timing values supersede these values.
- Locate Pedestrian and Crosswalk advance signs in accordance with Table 2C-4 in Section 2C.05 of the 2009 MUTCD or as otherwise directed by the Engineer.



TIMING CHART

FEATURE	PHASE		
	4 PED	6	8 PED
Min Green *	7	14	7
Walk *	7	7	7
Ped Clear	4	5	4
Veh. Extension *	0.0	0.0	0.0
Max I *	7	90	7
Yellow	3.0	5.2	3.0
Red Clear	0.0	3.0	0.0
Actuations B4 Add *	-	-	-
Seconds / Actuation *	-	-	-
Max Initial *	-	-	-
Time Before Reduction *	-	-	-
Time To Reduce *	-	-	-
Minimum Gap	-	-	-
Locking Detector	-	-	-
Recall Position	-	PED. RECALL	-
Dual Entry	-	-	-
Simultaneous Gap	X	X	X

Serves as Flashing Yellow Time
Serves as Steady Yellow Clearance Time
Serves as All Red Clearance Time



New Installation

DOCUMENT NOT CONSIDERED FINAL UNLESS ALL SIGNATURES COMPLETED

Prepared For the Office of:

Ped Hybrid Beacon on NC 55 EB at NC 55 Business
 Division 5 Wake County Fuquay-Varina
 PLAN DATE: July 2022 REVIEWED BY: J.L. Lewis
 PREPARED BY: M.L. Stygles REVIEWED BY: J. Ma
 SCALE: 1" = 40'
 REVISIONS: _____ INIT. DATE _____
 SIGNED BY:
 SEAL:
 DATE: 7/11/2022
 SIG. INVENTORY NO. 05-1628

vhb
 VHB Engineering NC, P.C. (C-3705)
 940 Main Campus Drive, Suite 500
 Raleigh, NC 27606
 919.829.0328

7/11/2022
 3:05:16:28 - s:\g-dsn-2022-dgn
 ms\stygles

* These values may be field adjusted. Do not adjust Min Green and Extension times for phase 6 lower than what is shown. Min Green for all other phases should not be lower than 4 seconds.