

EROSION CONTROL PLAN

FROM -L- STA 10+66 TO 12+60 LT

PLANS PREPARED BY:

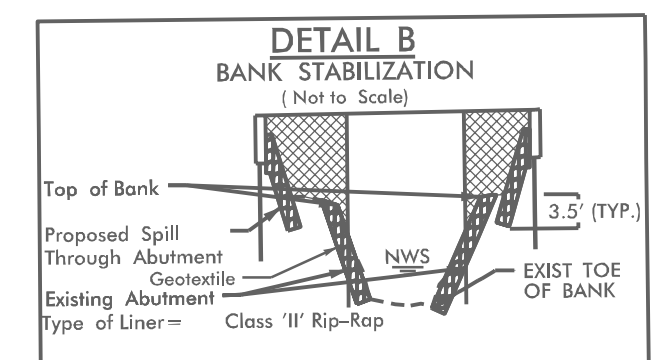


WSP USA
434 FAYETTEVILLE STREET
SUITE 1500
RALEIGH, NC 27601
TEL: 1.919.836.4040
FAX: 1.919.836.4099
LICENSE NO. F-0165

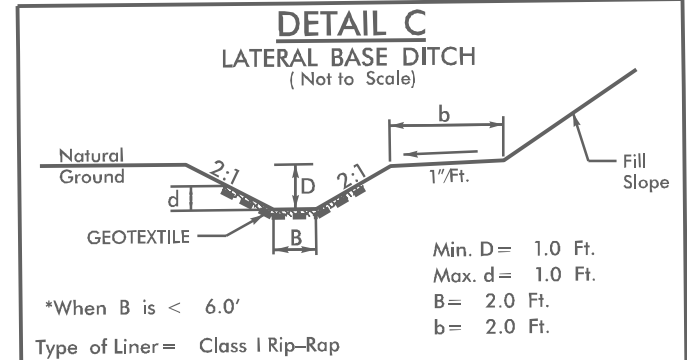
PROJECT REFERENCE NO. B-5326	SHEET NO. EC-05/CONST.04
RW SHEET NO.	
ROADWAY DESIGN ENGINEER	HYDRAULICS ENGINEER

DOCUMENT NOT CONSIDERED FINAL UNLESS ALL SIGNATURES COMPLETED

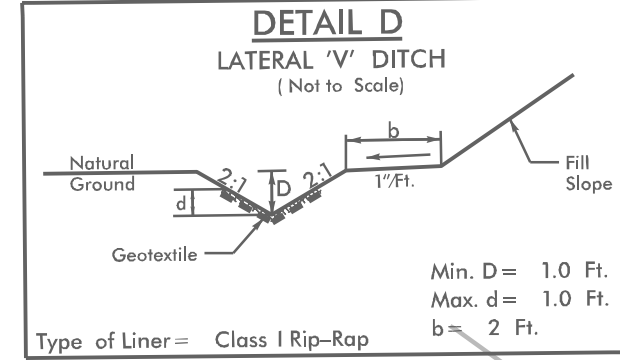
NAD 83/NSRS 2007



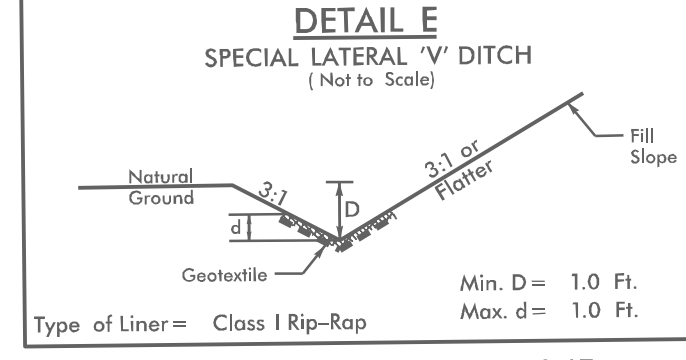
FROM -L- STA 17+15 TO 17+55
FROM -L- STA 17+55 TO 18+55



FROM -L- STA 18+65 TO 19+00 LT

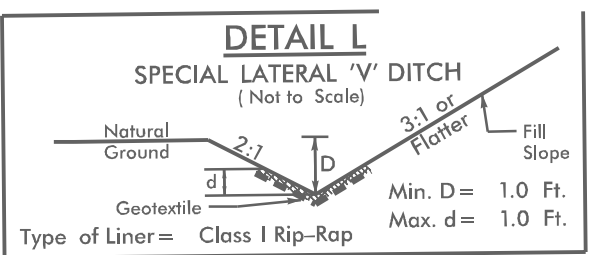


FROM -L- STA 19+00 TO 20+30 LT



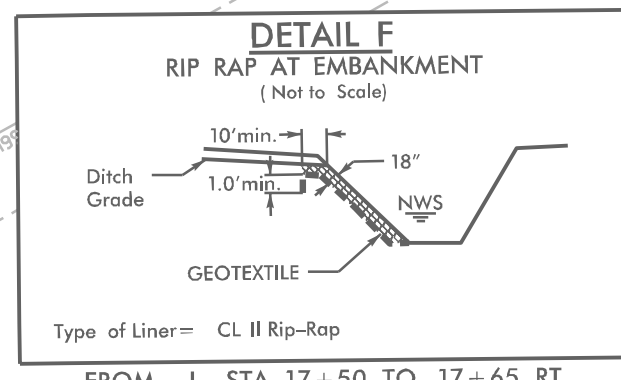
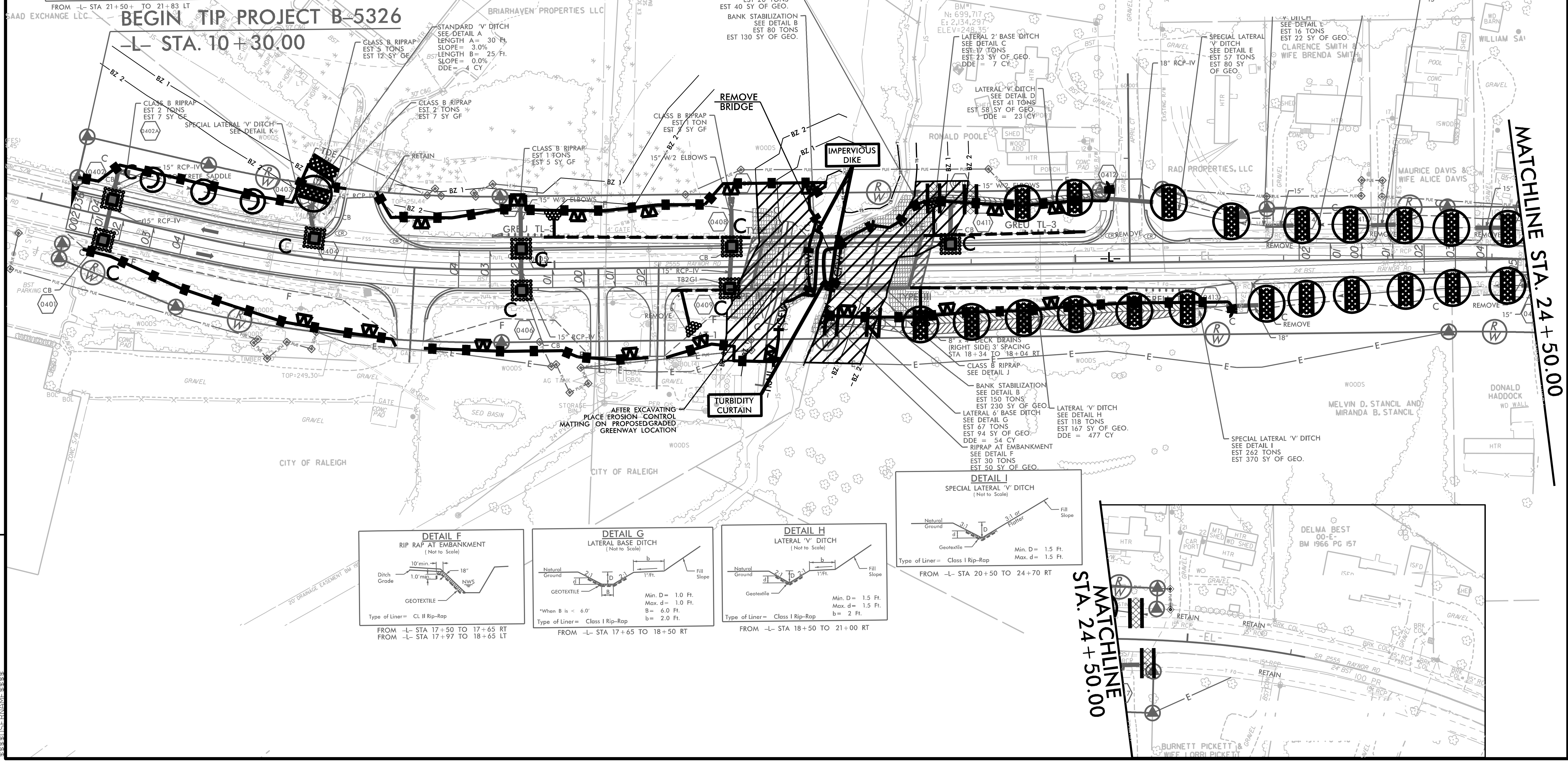
FROM -L- STA 20+30 TO 21+50 LT
FROM -L- STA 21+83 TO 24+70 LT

Place Matting for Erosion Control on Slope as Work Allows.
-L- Sta. 18+65 to Sta. 20+00 LT
-L- Sta. 18+60 to Sta. 20+50 RT

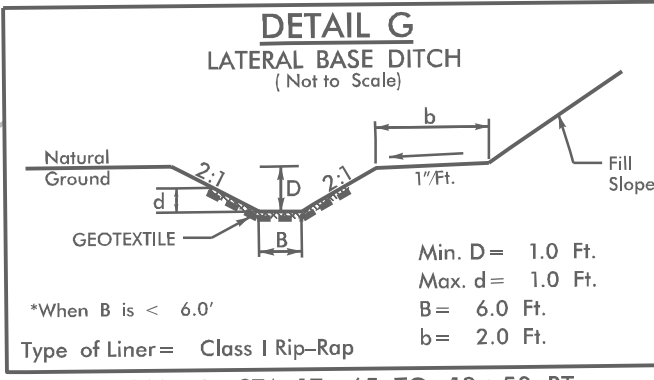


FROM -L- STA 21+50+ TO 21+83 LT

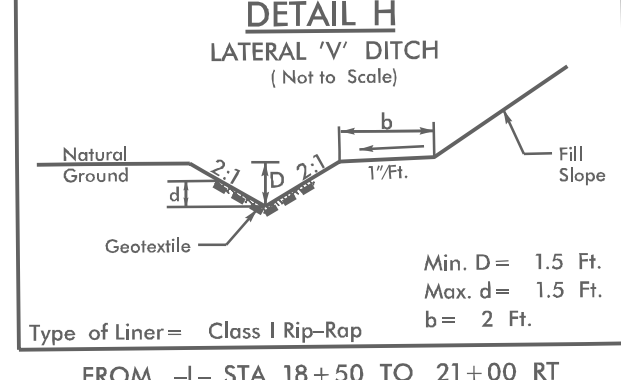
Place Matting for Erosion Control on Slope as Work Allows.
-L- Sta. 12+00 to Sta. 16+90 LT
-L- Sta. 16+50 to Sta. 16+70 RT
-L- Sta. 17+10 to Sta. 17+40



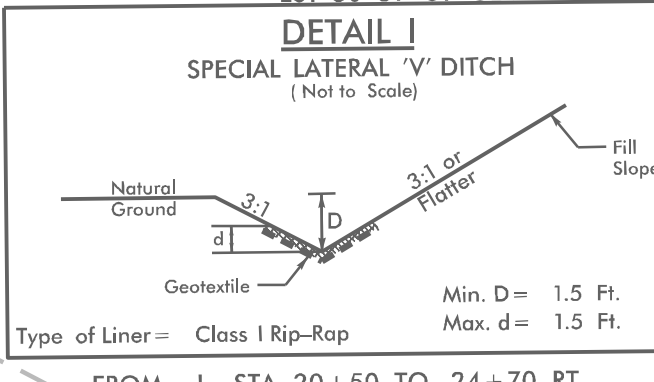
FROM -L- STA 17+50 TO 17+65 RT
FROM -L- STA 17+97 TO 18+65 LT



FROM -L- STA 17+65 TO 18+50 RT



FROM -L- STA 18+50 TO 21+00 RT



FROM -L- STA 20+50 TO 24+70 RT

MATCHLINE STA. 24+50.00