


# EROSION CONTROL PLAN

PLANS PREPARED BY:

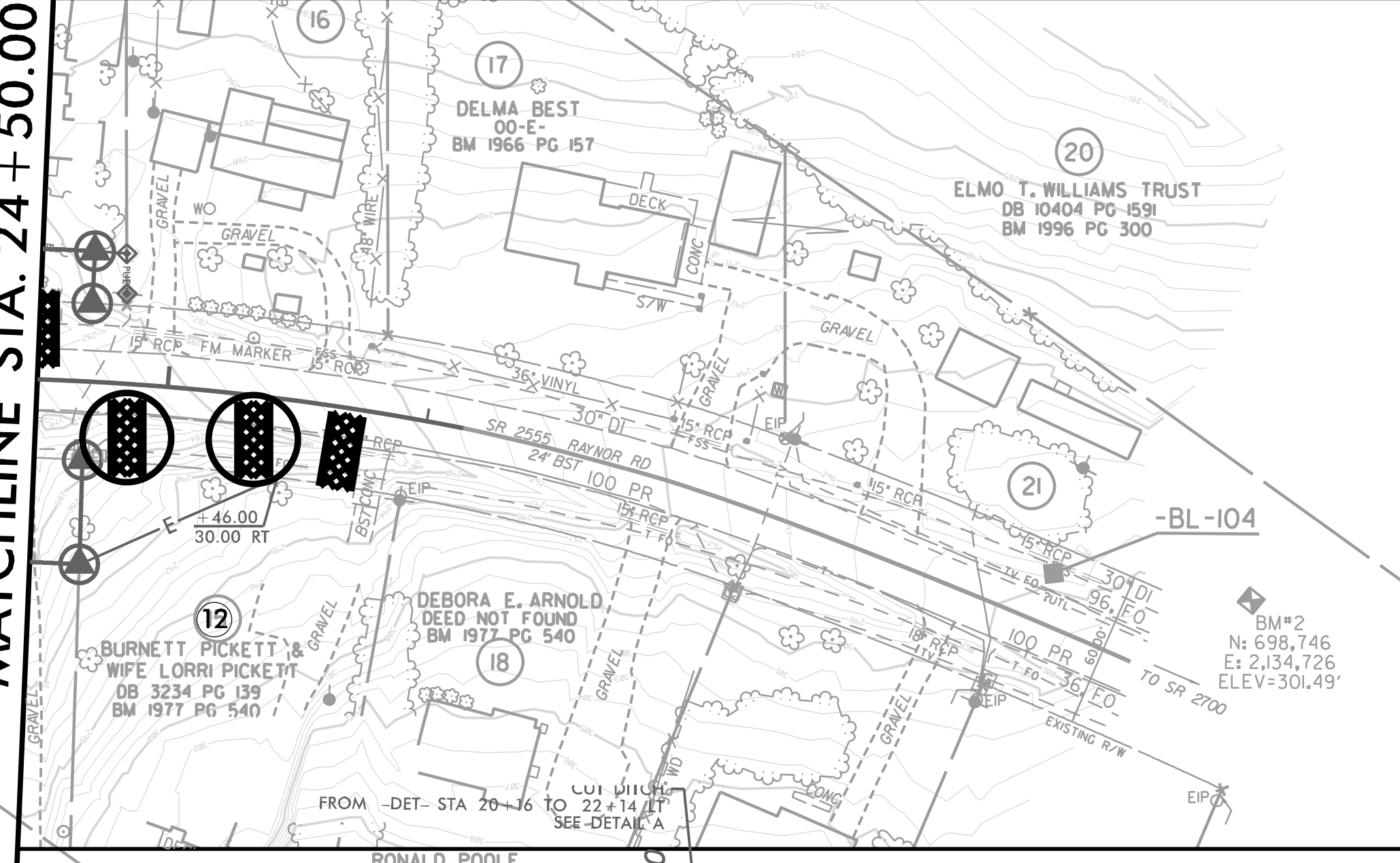


WSP USA  
434 FAYETTEVILLE STREET  
SUITE 1500  
RALEIGH, NC 27601  
TEL: 1.919.836.4040  
FAX: 1.919.836.4099  
LICENSE NO. F-0165

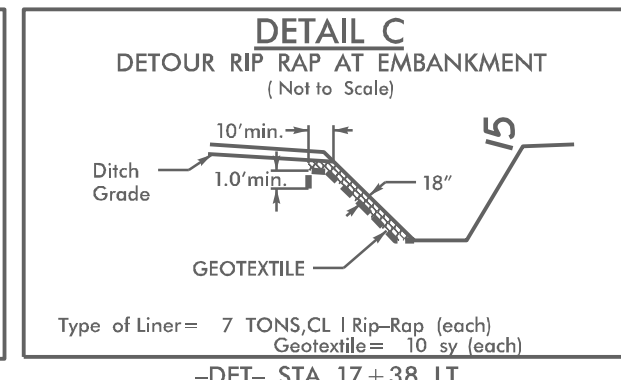
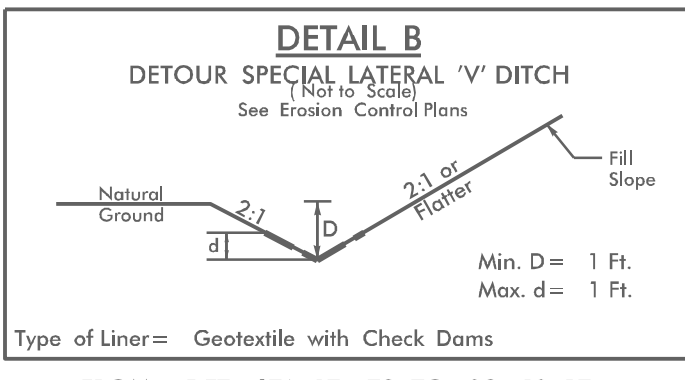
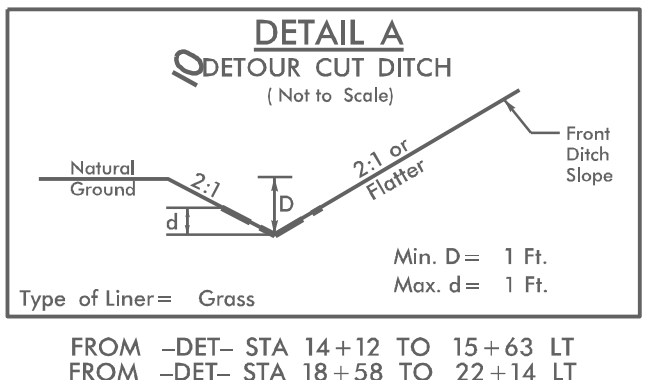
PROJECT REFERENCE NO. <b>B-5326</b>	SHEET NO. <b>EC-04/CONST.05</b>
RW SHEET NO.	
ROADWAY DESIGN ENGINEER	HYDRAULICS ENGINEER
<b>DOCUMENT NOT CONSIDERED FINAL UNLESS ALL SIGNATURES COMPLETED</b>	

NAD 83/NSRS 2007

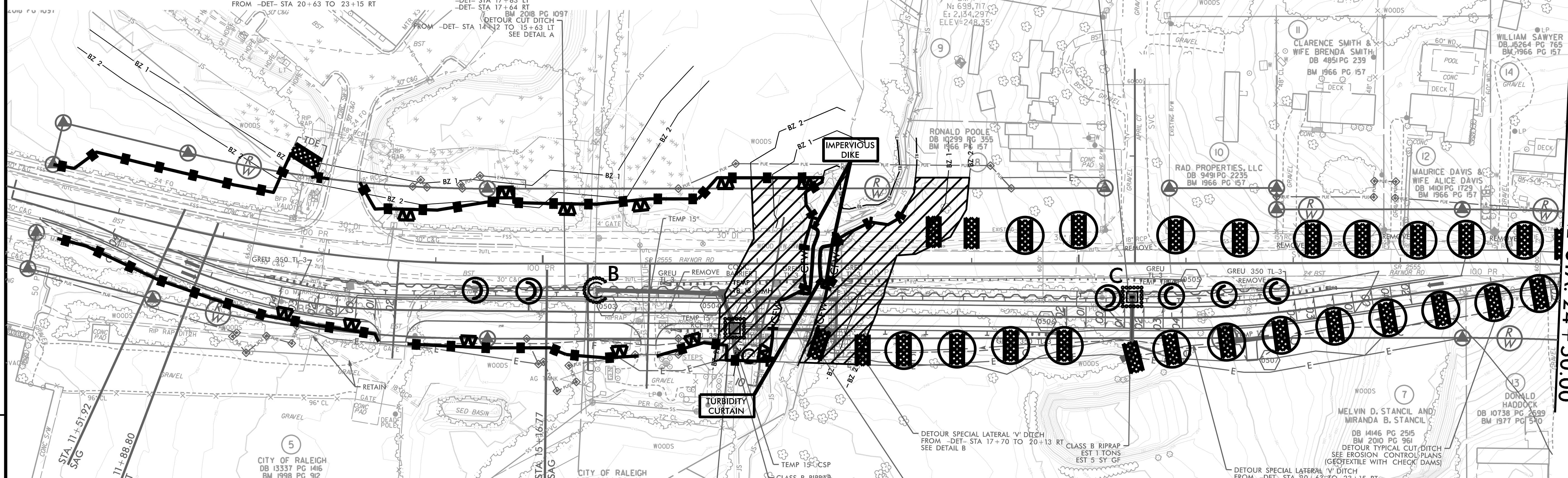
MATCHLINE STA. 24 + 50.00



**CLEARING AND GRUBBING  
EROSION CONTROL FOR  
CONSTRUCTION SHEET 5**



REVISIONS



MATCHLINE STA. 24 + 50.00

**NOTE:**  
PLACE TEMPORARY ROCK SILT CHECKS TYPE - A AT DRAINAGE OUTLETS.

BRIDGE REMOVAL AND BRIDGE CONSTRUCTION SHALL BE PER REQUIREMENTS IN THE NCDOT BEST MANAGEMENT PRACTICES FOR CONSTRUCTION AND MAINTENANCE ACTIVITIES MANUAL

 ENVIRONMENTALLY SENSITIVE AREA  
SEE PROJECT SPECIAL PROVISIONS

CONTRACTOR SHALL INSTALL AN ONSITE CONCRETE WASHOUT STRUCTURE PER THE NCDOT DETAIL AND SPECIAL PROVISIONS. ACTUAL LOCATION OF THE STRUCTURE SHALL BE DETERMINED IN THE FIELD. CONCRETE WASHOUT STRUCTURE SHALL BE MAINTAINED BY THE CONTRACTOR. ALL CONCRETE TRUCKS SHALL USE THE CONCRETE WASHOUT STRUCTURE. NO WASHOUT OF CONCRETE TRUCKS SHALL BE ALLOWED EXCEPT IN THE CONCRETE WASHOUT STRUCTURE.

BRIDGE REMOVAL AND BRIDGE CONSTRUCTION SHALL BE PER REQUIREMENTS IN THE NCDOT BEST MANAGEMENT PRACTICES FOR CONSTRUCTION AND MAINTENANCE ACTIVITIES MANUAL

UTILIZE SPECIAL STILLING BASIN(S) AS STILLING BASIN(S) WHERE APPLICABLE

CITY OF RALEIGH