

**This electronic collection of documents is provided
for the convenience of the user
and is Not a Certified Document –**

**The documents contained herein were originally issued
and sealed by the individuals whose names and license
numbers appear on each page, on the dates appearing
with their signature on that page.**

**This file or an individual page
shall not be considered a certified document.**

09.08/99

TIP PROJECT: U-2579AA

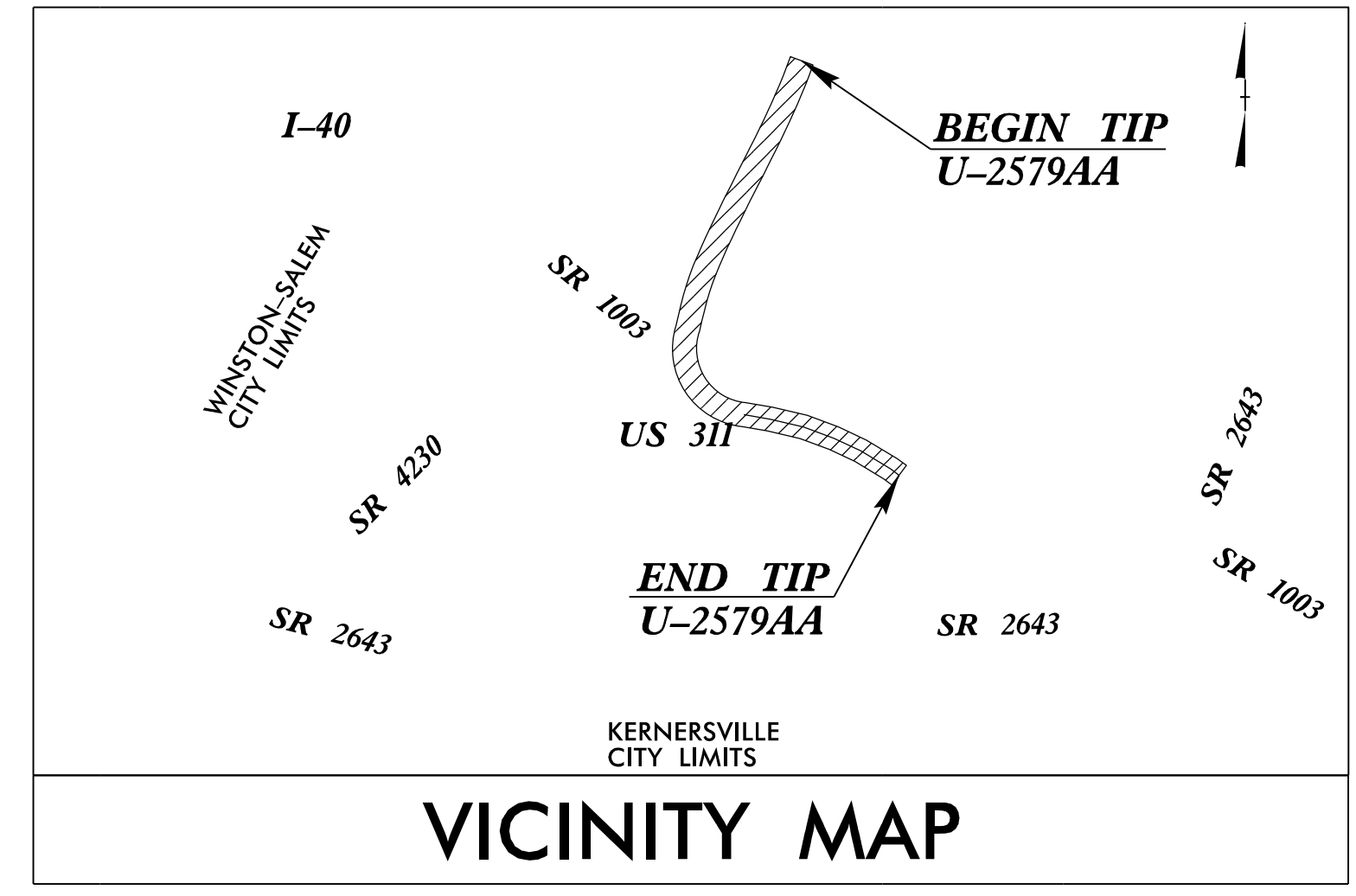
STATE OF NORTH CAROLINA
DIVISION OF HIGHWAYS

T.I.P. NO.	SHEET NO.
U-2579AA	UO-1

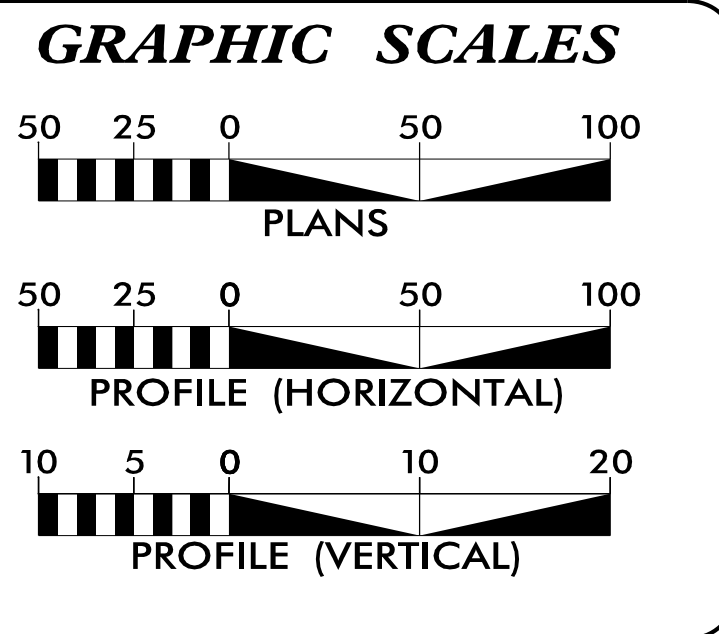
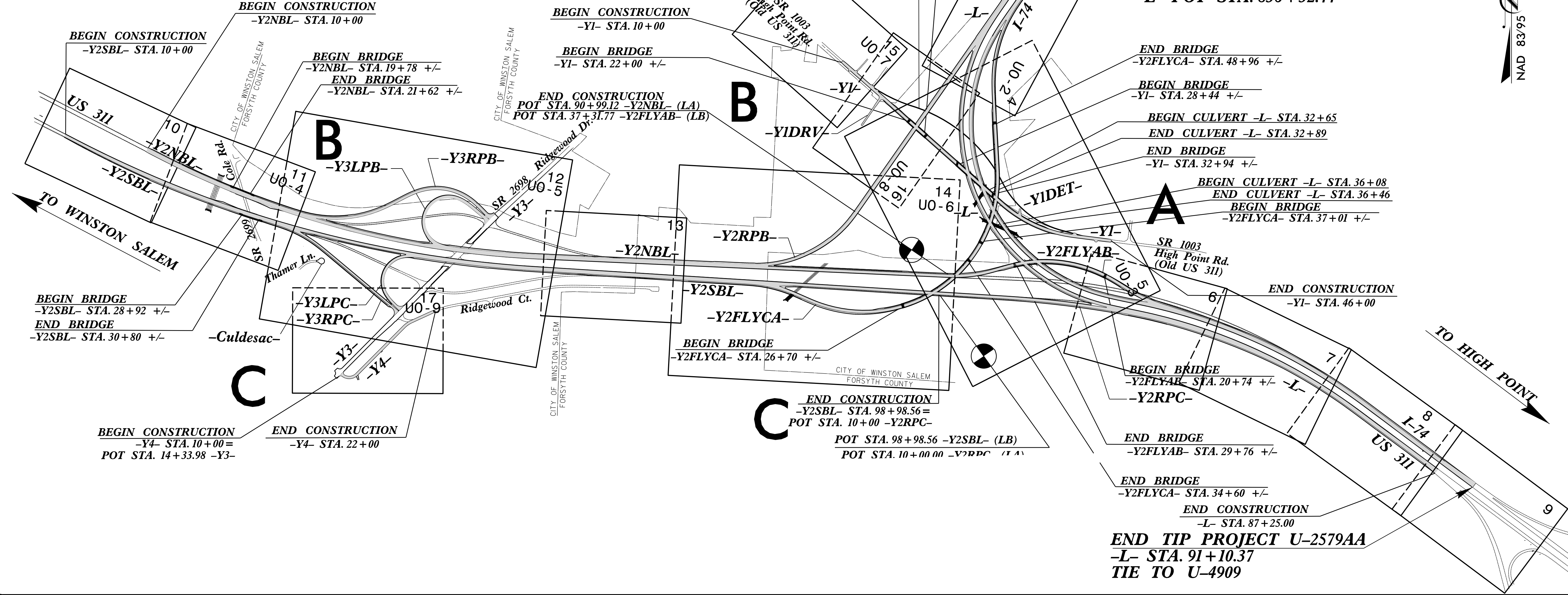
UTILITIES BY OTHERS PLANS FORSYTH COUNTY

LOCATION: WINSTON-SALEM - NORTHERN BELTWAY EASTERN SECTION
(FUTURE I-74) FROM US 311 TO I-40
TYPE OF WORK: PROPOSED POWER DISTRIBUTION,
GAS DISTRIBUTION, TELEPHONE,
CATV, WATER & SEWER RELOCATIONS

NOTE:
ALL UTILITY WORK SHOWN ON THIS SHEET IS DONE BY OTHERS.
NO PAYMENT WILL BE MADE TO THE CONTRACTOR FOR UTILITY WORK SHOWN ON THIS SHEET.



FINAL RIGHT OF WAY PLANS



INDEX OF SHEETS	
SHEET NO.:	DESCRIPTION:
UO-1	TITLE SHEET
UO-2 TO UO-9	UBO PLAN SHEETS

UTILITY OWNERS WITH CONFLICTS	
(A)	DUKE ENERGY - POWER (DISTRIBUTION)
(B)	AT&T - COMMUNICATIONS
(C)	
(D)	
(E)	
()	DUKE ENERGY - POWER ()

PREPARED IN THE OFFICE OF:

4865 FALLS OF NEUSE RD
SUITE 400
RALEIGH, NORTH CAROLINA 27609
(919) 783-2214
WWW.KCICOM

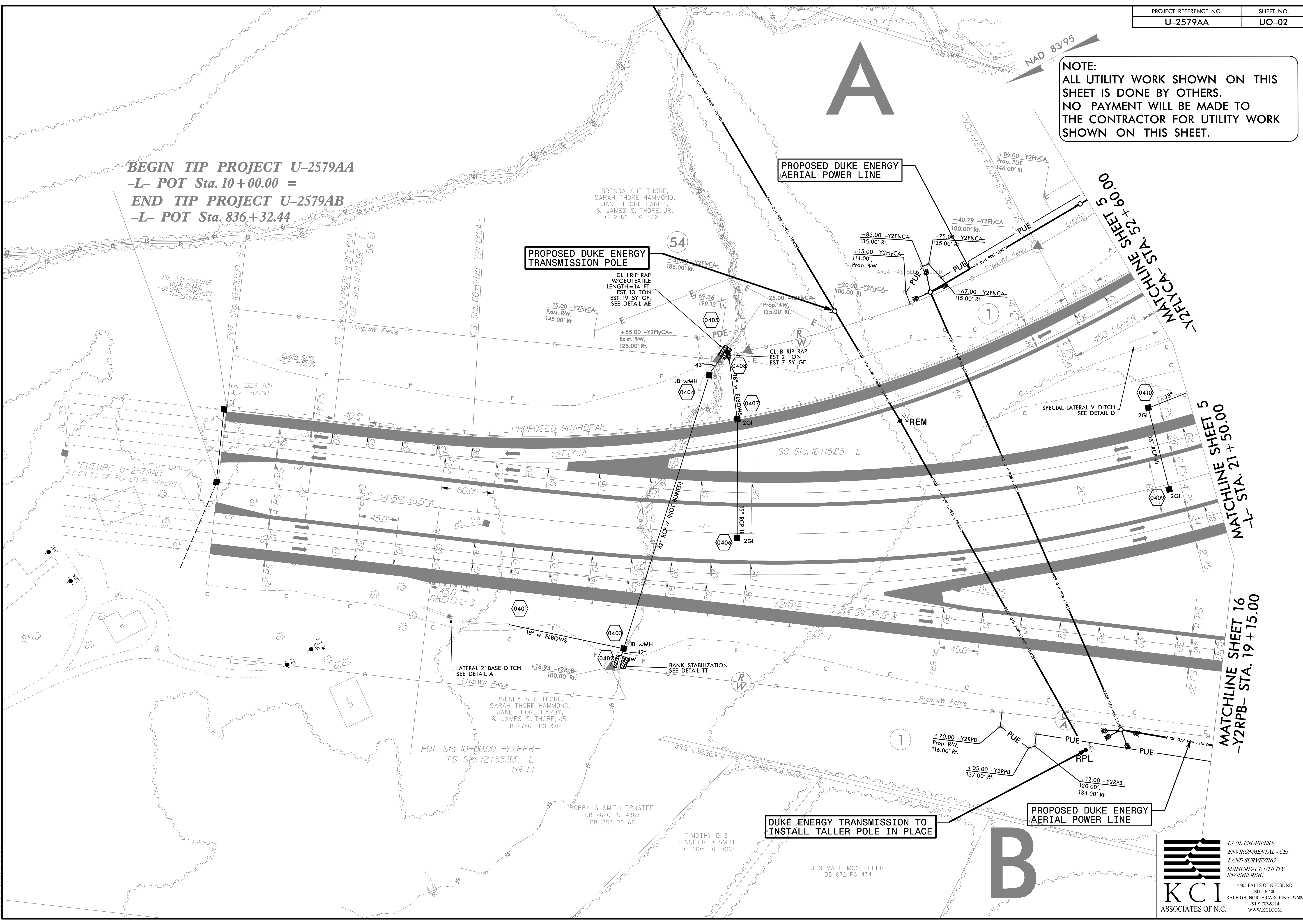
JOHN FAISON UTILITY PROJECT MANAGER
JOHN FAISON PROJECT UTILITY COORDINATOR
PROJECT UTILITY DESIGNER

DIVISION OF HIGHWAYS
UTILITIES UNIT
1555 MAIL SERVICES CENTER
RALEIGH, NC 27699-1555
PHONE (919) 707-6690
FAX (919) 250-4151

14-NOV-2018 15:49
M:\2010\05\050583AG-U2579AA-Forsyth Co\Utilities\290_001_U2579AA_ut_tsh_U001.psh.dgn
\$\$\$\$\$SERVNAME\$\$\$\$\$

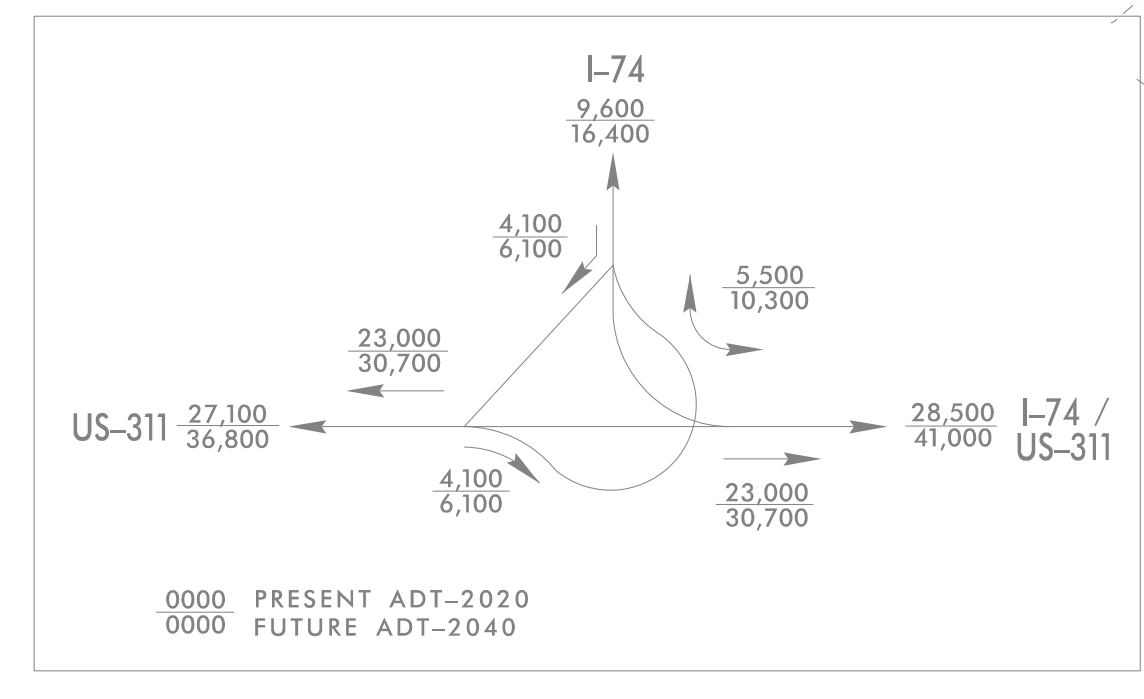
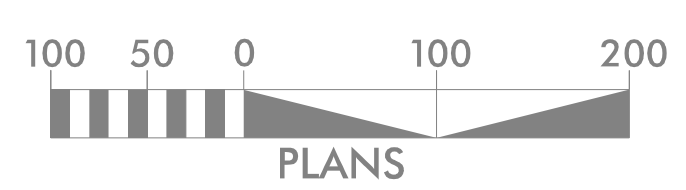
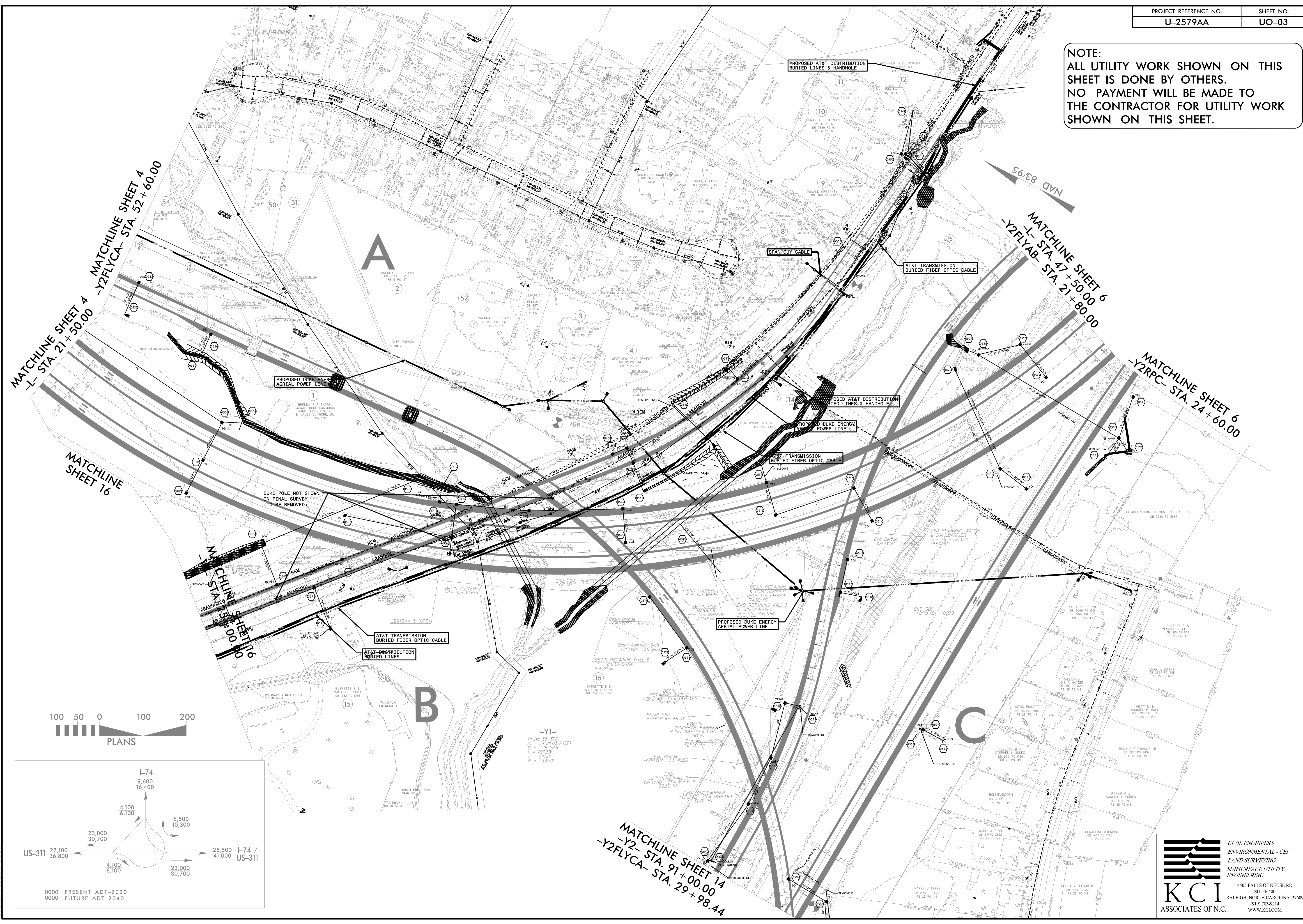
NOTE:
 ALL UTILITY WORK SHOWN ON THIS SHEET IS DONE BY OTHERS.
 NO PAYMENT WILL BE MADE TO THE CONTRACTOR FOR UTILITY WORK SHOWN ON THIS SHEET.

BEGIN TIP PROJECT U-2579AA
 -L- POT Sta. 10+00.00 =
END TIP PROJECT U-2579AB
 -L- POT Sta. 836+32.44



09-AUG-2022 11:42
 M:\2019\06\1005633\AG-U2579AA-ut-rdy4_UD02_psh.dgn
 8/17/99

NOTE:
 ALL UTILITY WORK SHOWN ON THIS SHEET IS DONE BY OTHERS.
 NO PAYMENT WILL BE MADE TO THE CONTRACTOR FOR UTILITY WORK SHOWN ON THIS SHEET.



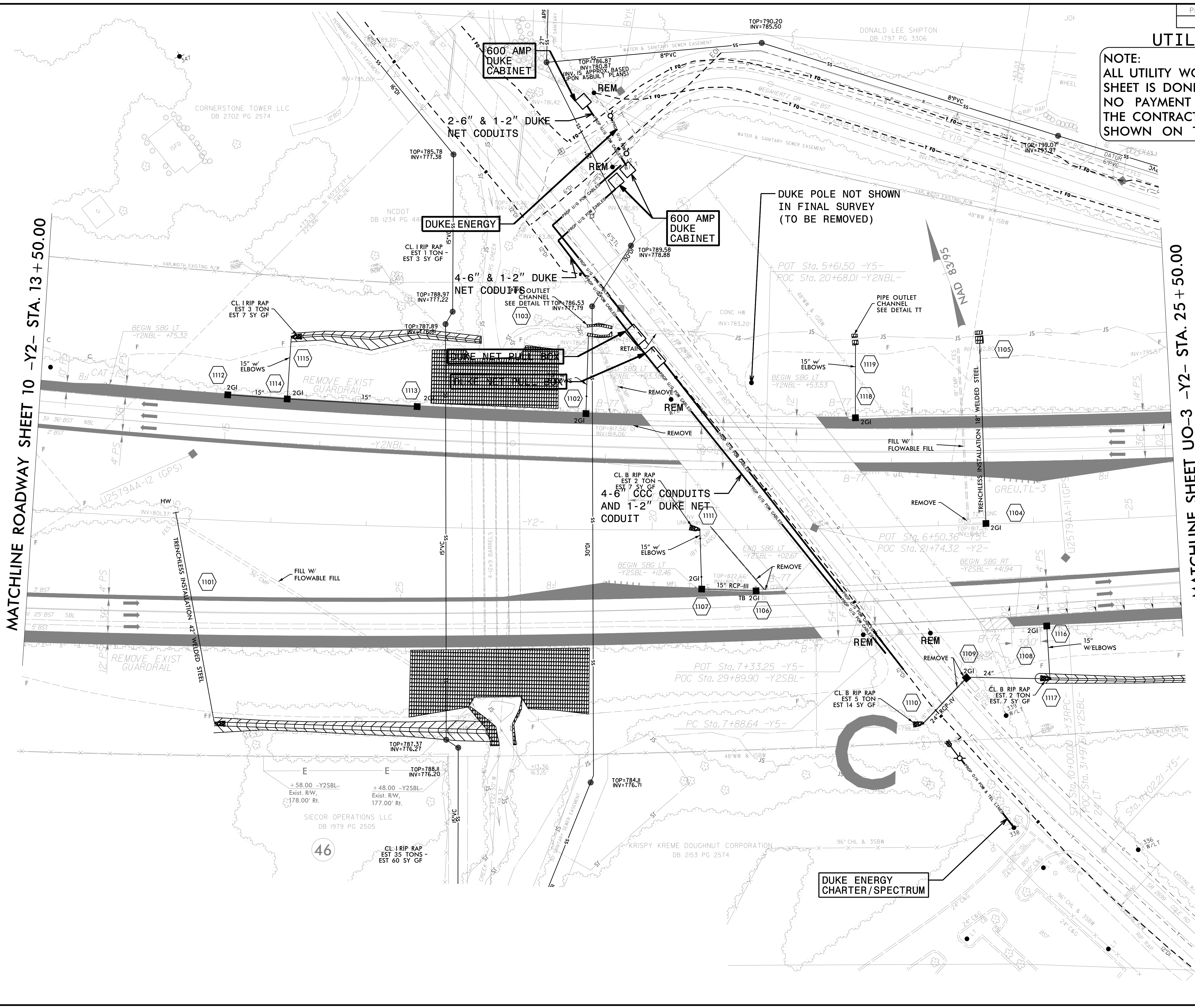
-Y1-
 PI Sta. 381.5771
 $\Delta = 54^{\circ} 21' 03.57" (UT)$
 $L = 48.092'$
 $R = 40.00'$
 $P = 1,330.00'$

MATCHLINE SHEET 14
 -Y2- STA. 91+00.00
 -Y2FLYCA- STA. 29+98.44

08-AUG-2022 12:25
 M:\2020\0610005633\AG-U2579AA-Forsyth Co Utilities\230_002-U2579AA-ut-rd\5_UD03_psh.dgn
 8/17/2022

UTILITIES BY OTHERS

NOTE:
 ALL UTILITY WORK SHOWN ON THIS SHEET IS DONE BY OTHERS.
 NO PAYMENT WILL BE MADE TO THE CONTRACTOR FOR UTILITY WORK SHOWN ON THIS SHEET.



MATCHLINE ROADWAY SHEET 10 -Y2- STA. 13 +50.00

MATCHLINE SHEET UO-3 -Y2- STA. 25 +50.00

DUKE POLE NOT SHOWN
 IN FINAL SURVEY
 (TO BE REMOVED)

DUKE ENERGY
 CHARTER/SPECTRUM

KCI
 ASSOCIATES OF N.C.

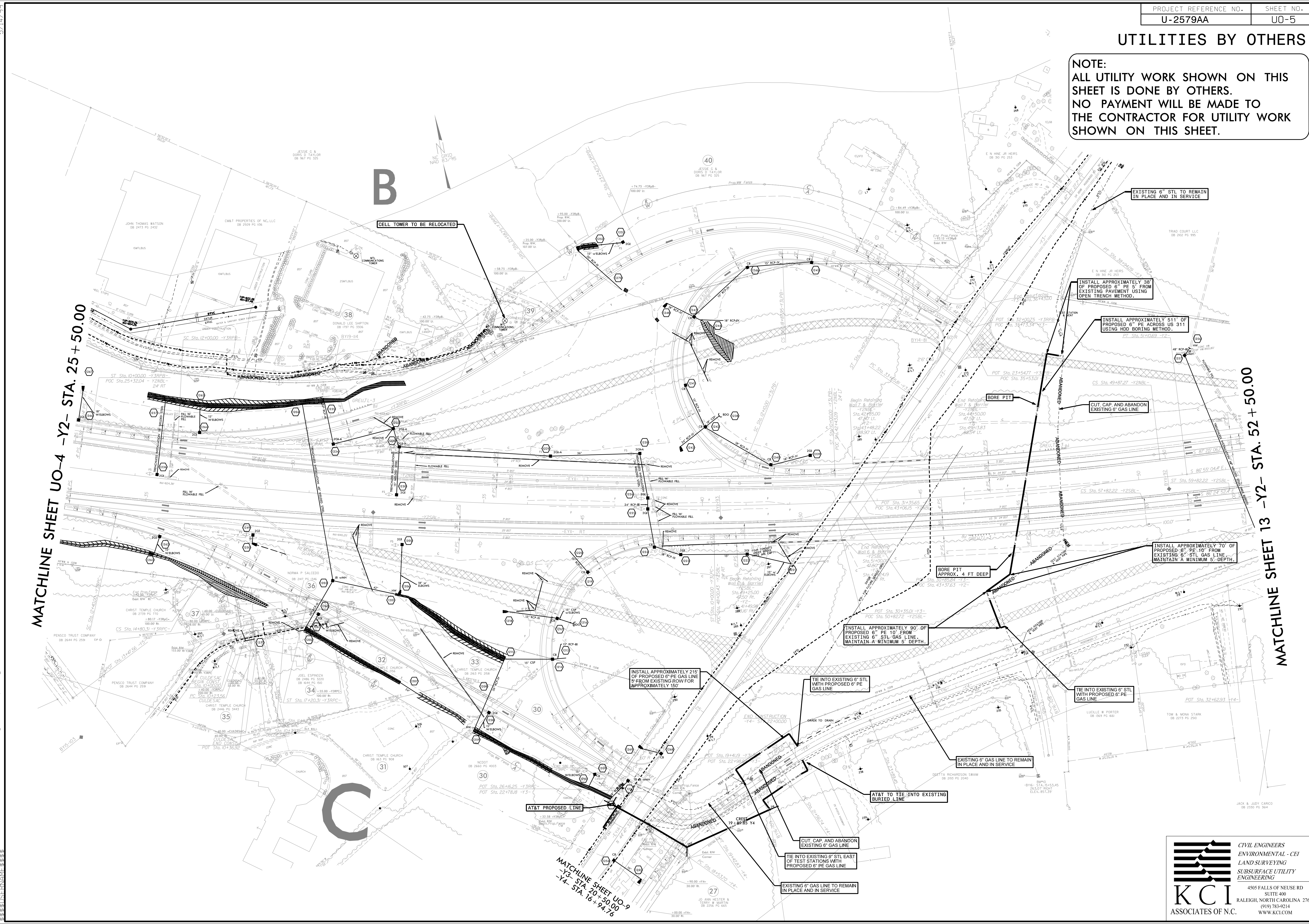
CIVIL ENGINEERS
 ENVIRONMENTAL - CEI
 LAND SURVEYING
 SUBSURFACE UTILITY
 ENGINEERING

4505 FALLS OF NEUSE RD
 SUITE 400
 RALEIGH, NORTH CAROLINA 27609
 (919) 783-0214
 WWW.KCI.COM

5/14/19 27-JAN-2022 09:08 -U2579AA-F:\Projects\2579AA\UO-4.dwg 1:U004-psd.dgn

UTILITIES BY OTHERS

NOTE:
ALL UTILITY WORK SHOWN ON THIS SHEET IS DONE BY OTHERS.
NO PAYMENT WILL BE MADE TO THE CONTRACTOR FOR UTILITY WORK SHOWN ON THIS SHEET.



MATCHLINE SHEET UO-4 -Y2- STA. 25+50.00

MATCHLINE SHEET 13 -Y2- STA. 52+50.00

MATCHLINE SHEET UO-9
-Y4- STA. 20+50.00
-Y4- STA. 16+94.76



**CIVIL ENGINEERS
ENVIRONMENTAL - CEI
LAND SURVEYING
SUBSURFACE UTILITY
ENGINEERING**

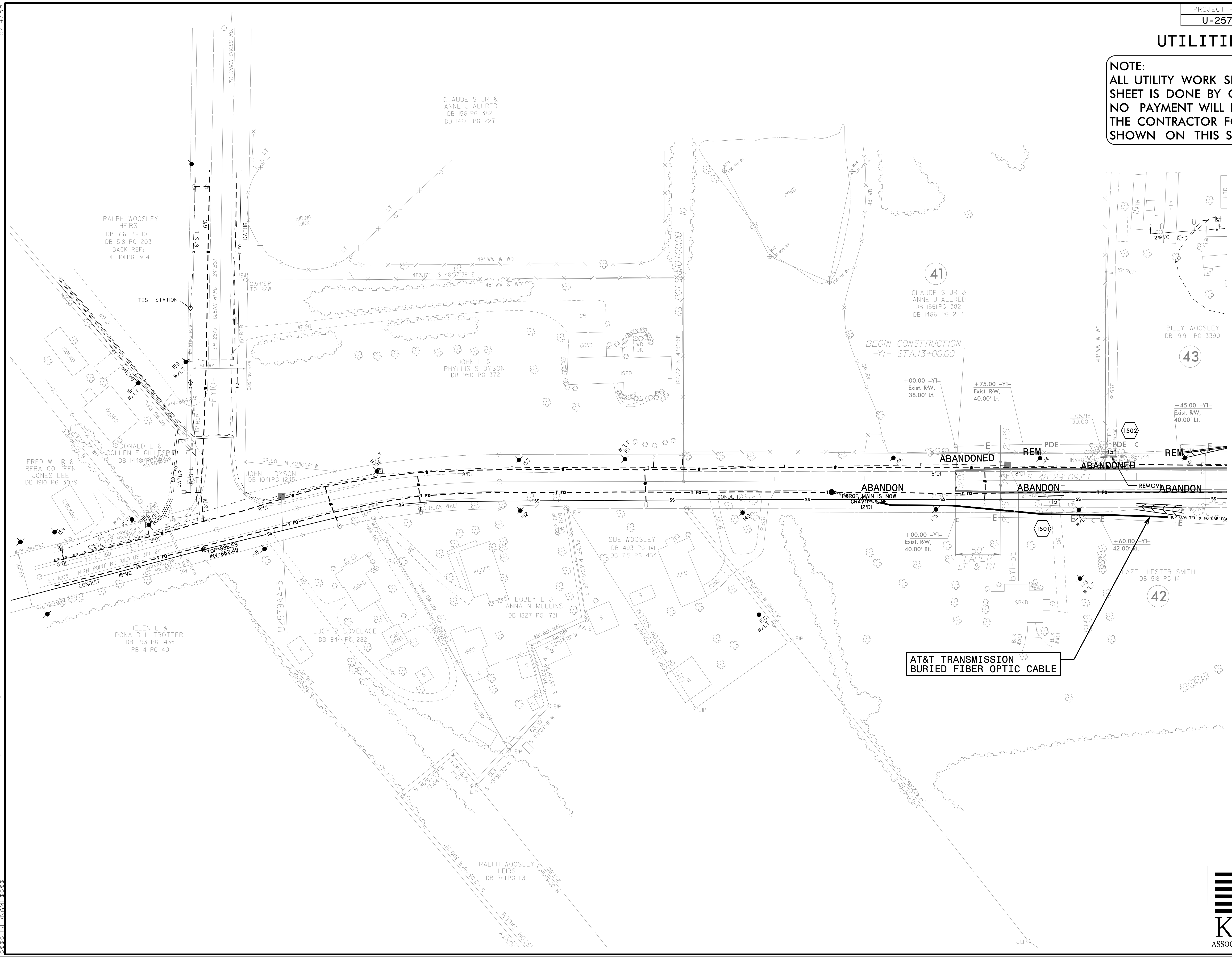
4505 FALLS OF NEUSE RD
SUITE 400
RALEIGH, NORTH CAROLINA 27609
(919) 783-9214
WWW.KCI.COM

5/14/99
08_AUG-2002_12:36_utilities\250_004_U2579AA_ut_r.dwg:J2_U005_psh.dgn
U2579AA

UTILITIES BY OTHERS

NOTE:
ALL UTILITY WORK SHOWN ON THIS SHEET IS DONE BY OTHERS.
NO PAYMENT WILL BE MADE TO THE CONTRACTOR FOR UTILITY WORK SHOWN ON THIS SHEET.

MATCHLINE SHEET UO-8 -Y1- STA. 16 + 00.00



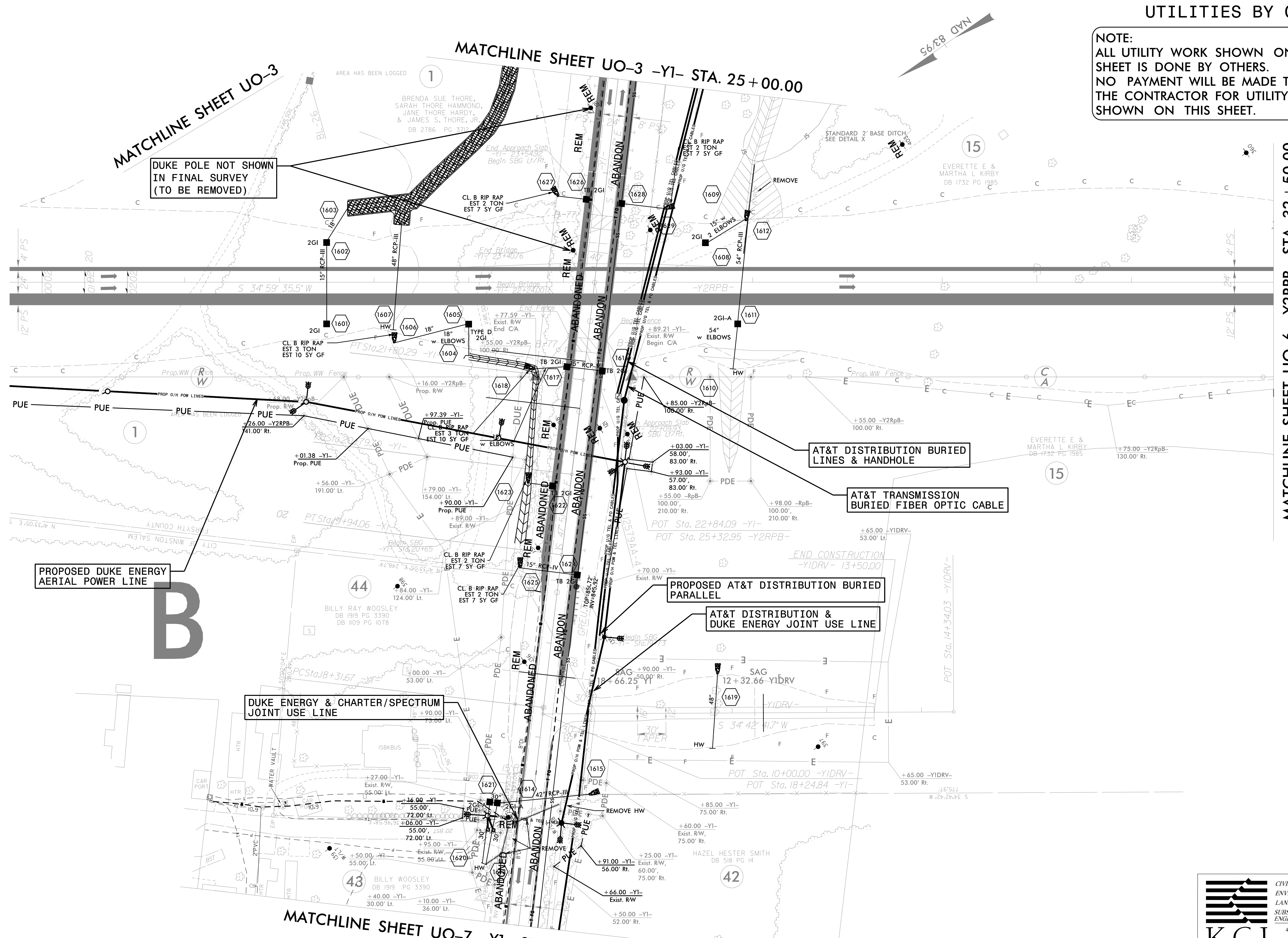
08 AUG 2002 12:40 utilities\250_006_U2579AA_ut_r.dwg 15:007 -psh.dgn

UTILITIES BY OTHERS

NOTE:
ALL UTILITY WORK SHOWN ON THIS SHEET IS DONE BY OTHERS.
NO PAYMENT WILL BE MADE TO THE CONTRACTOR FOR UTILITY WORK SHOWN ON THIS SHEET.

MATCHLINE SHEET UO-2 -Y2RPB- STA. 19 + 15.00

MATCHLINE SHEET UO-6 -Y2RPB- STA. 32 + 50.00

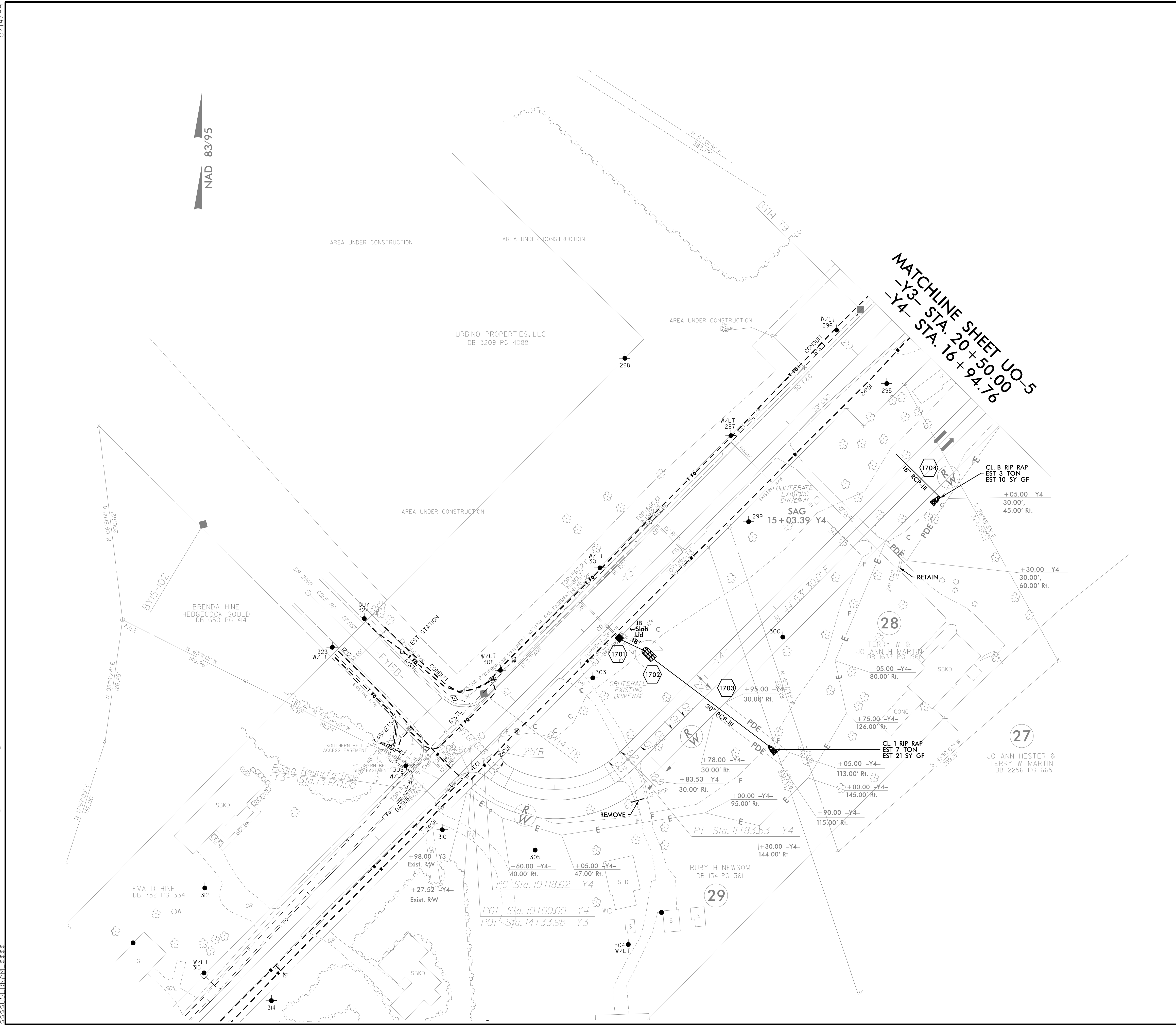


08-AUG-2002 12:41 Utilities\250-007-U2579AA-ut.rdy\16_U008_psh.dgn
 U2579AA-UT-16_U008_PSH.DGN
 5/14/99

UTILITIES BY OTHERS

NOTE:
ALL UTILITY WORK SHOWN ON THIS SHEET IS DONE BY OTHERS.
NO PAYMENT WILL BE MADE TO THE CONTRACTOR FOR UTILITY WORK SHOWN ON THIS SHEET.

5/14/99
U-2579AA - JAN-2022 09:14 Utilities 250_008_U2579AA_ut_r.dwg 17_U009_psh.dgn



KCI
ASSOCIATES OF N.C.

CIVIL ENGINEERS
ENVIRONMENTAL - CEI
LAND SURVEYING
SUBSURFACE UTILITY
ENGINEERING

4505 FALLS OF NEUSE RD
SUITE 400
RALEIGH, NORTH CAROLINA 27609
(919) 783-9214
WWW.KCI.COM