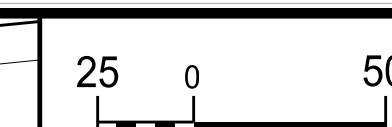


**This electronic collection of documents is provided
for the convenience of the user
and is Not a Certified Document –**

**The documents contained herein were originally issued
and sealed by the individuals whose names and license
numbers appear on each page, on the dates appearing
with their signature on that page.**

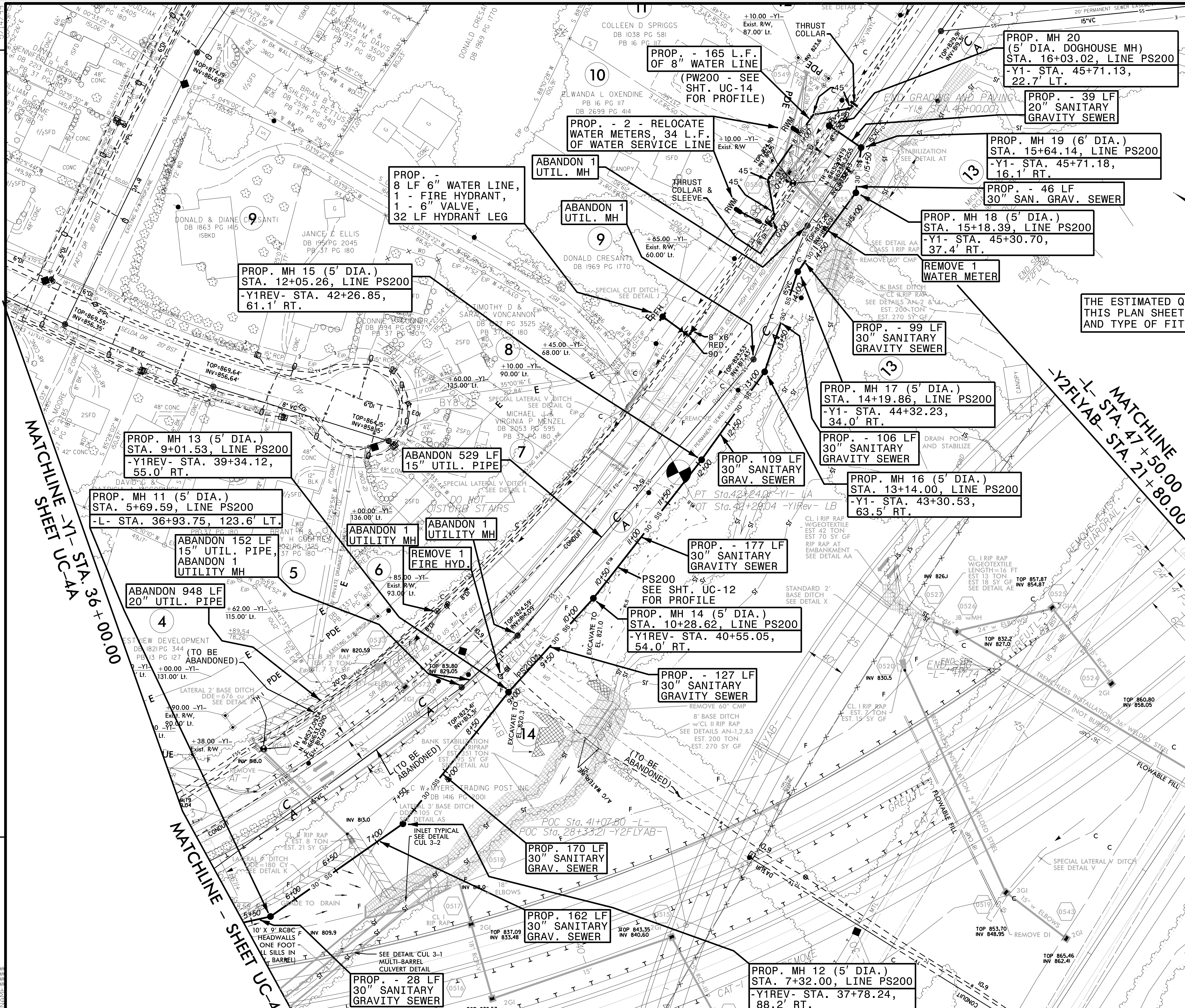
**This file or an individual page
shall not be considered a certified document.**



PROJECT REFERENCE NO.	SHEET NO.
U-2579AA	UC-4B
DESIGNED BY: DMP	
DRAWN BY: DMP	
CHECKED BY: DMP	
APPROVED BY:	
REVISED:	
NORTH CAROLINA DEPARTMENT OF TRANSPORTATION	
UTILITIES ENGINEERING SEC. PHONE: (919) 707-6690 FAX: (919) 250-4151	
UTILITY CONSTRUCTION PLANS ONLY	

UTILITY CONSTRUCTION

DOCUMENT NOT CONSIDERED FINAL UNLESS ALL SIGNATURES COMPLETED



THE ESTIMATED QUANTITY OF D.I. WATER PIPE FITTINGS ON THIS PLAN SHEET IS 925 POUNDS. THE ACTUAL QUANTITY AND TYPE OF FITTINGS WILL VARY BASED ON FIELD CONDITIONS.

NOTE: CONTRACTOR SHALL USE CAUTION WHEN INSTALLING PROPOSED SANITARY SEWER ACROSS RELOCATED AT&T TOLL LINE AT STA. 15+43± OF PS200. PROPOSED SANITARY SEWER SHALL BE INSTALLED ABOVE THE AT&T LINE. CONTRACTOR SHALL NOTIFY AT&T PRIOR TO INSTALLING SANITARY SEWER THROUGH THIS AREA.

REVISIONS
MATCHLINE - SHEET UC-3A - STA. 36+00.00

MATCHLINE - STA. 47+50.00
-Y2FLYAB- STA. 21+80.00

MATCHLINE - STA. 24+60.00
-Y2RPC-

MATCHLINE - SHEET UC-AC

MATCHLINE - SHEET UC-4D

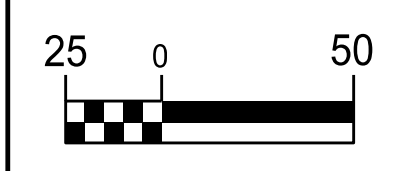
5/14/23

ON THIS SHEET, EXISTING SANITARY SEWER LINES AND MANHOLES TO BE ABANDONED OR REMOVED, BUT WITHOUT PAY ITEM NOTE LABELS DUE TO LIMITED SPACE FOR NOTES, INCLUDE THE FOLLOWING:
 5 - ABANDON UTILITY MH'S
 1 - REMOVE UTILITY MH
 425 L.F. - ABANDON 15" UTIL. PIPE

50 L.F. - ABANDON 15" UTIL. PIPE
 38 L.F. - ABANDON 16" UTIL. PIPE
 155 L.F. - ABANDON 20" UTIL. PIPE

NOTE:
 CONTRACTOR SHALL USE CAUTION WHEN INSTALLING PROPOSED SANITARY SEWER ACROSS RELOCATED AT&T TOLL LINE. PROPOSED SANITARY SEWER SHALL BE INSTALLED BELOW THE AT&T LINE. CONTRACTOR SHALL NOTIFY AT&T PRIOR TO INSTALLING SANITARY SEWER THROUGH THIS AREA.

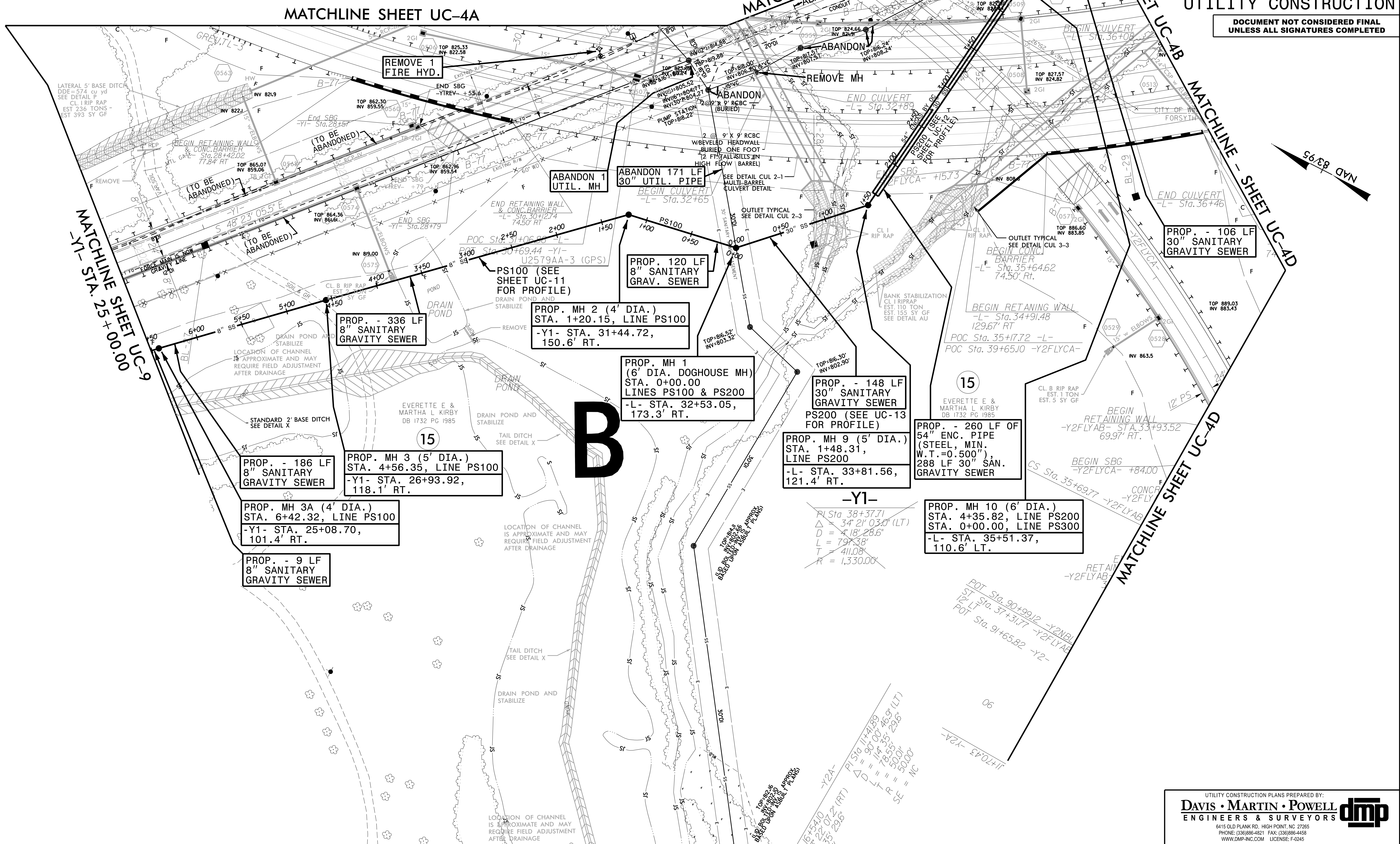
PROP. - 79 LF
 16" SANITARY
 GRAVITY SEWER



PROJECT REFERENCE NO.	SHEET NO.
U-2579AA	UC-4C
DESIGNED BY: DMP	
DRAWN BY: DMP	
CHECKED BY: DMP	
APPROVED BY:	
REVISED:	
NORTH CAROLINA DEPARTMENT OF TRANSPORTATION	
5/2/2022	
UTILITIES ENGINEERING SEC. PHONE: (919) 707-6690 FAX: (919) 250-4151	UTILITY CONSTRUCTION PLANS ONLY

UTILITY CONSTRUCTION

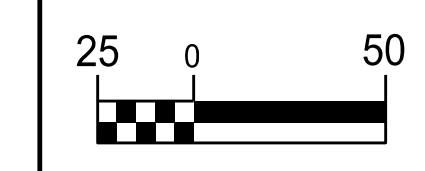
DOCUMENT NOT CONSIDERED FINAL
 UNLESS ALL SIGNATURES COMPLETED



REVISIONS

1
2
3
4
5
6
7
8
9
10
11
12
13
14
15
16
17
18
19
20
21
22
23
24
25
26
27
28
29
30
31
32
33
34
35
36
37
38
39
40
41
42
43
44
45
46
47
48
49
50
51
52
53
54
55
56
57
58
59
60
61
62
63
64
65
66
67
68
69
70
71
72
73
74
75
76
77
78
79
80
81
82
83
84
85
86
87
88
89
90
91
92
93
94
95
96
97
98
99
100

5/14/23

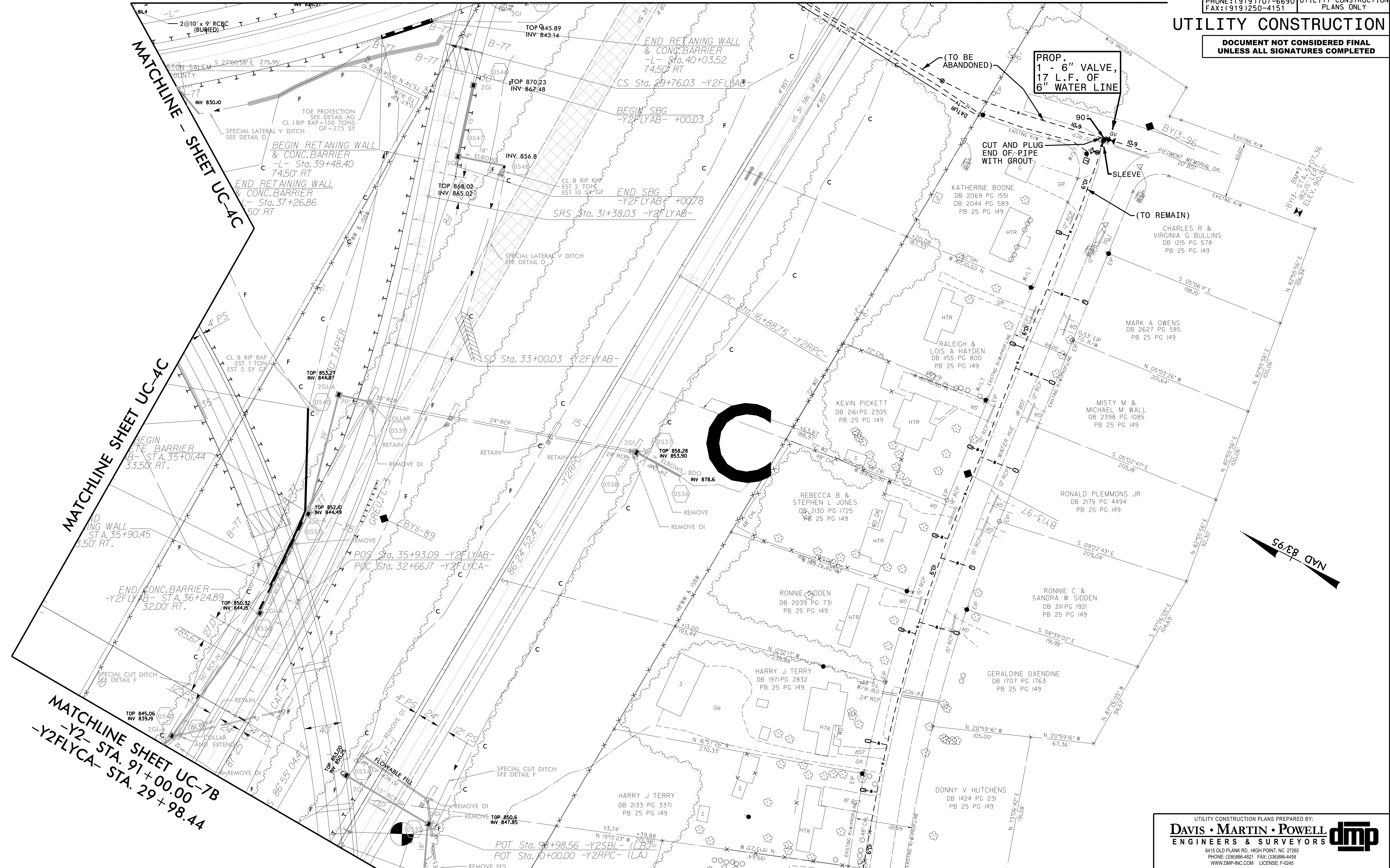


PROJECT REFERENCE NO.	SHEET NO.
U-2579AA	UC-4D
DESIGNED BY: DMP	
DRAWN BY: DMP	
CHECKED BY: DMP	
APPROVED BY:	
REVISED:	
NORTH CAROLINA DEPARTMENT OF TRANSPORTATION 5/2/2023 UTILITIES ENGINEERING SEC. PHONE: (919) 707-6690 FAX: (919) 250-4151 UTILITY CONSTRUCTION PLANS ONLY	

THE ESTIMATED QUANTITY OF D.I. WATER PIPE FITTINGS ON THIS PLAN SHEET IS 150 POUNDS. THE ACTUAL QUANTITY AND TYPE OF FITTINGS WILL VARY BASED ON FIELD CONDITIONS.

MATCHLINE - SHEET UC-4B

UTILITY CONSTRUCTION
DOCUMENT NOT CONSIDERED FINAL UNLESS ALL SIGNATURES COMPLETED



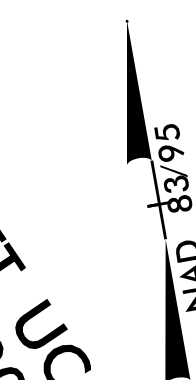
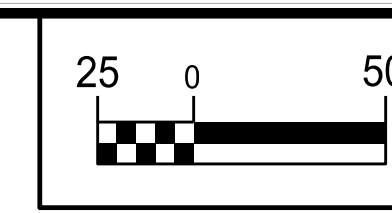
MATCHLINE - SHEET UC-4C

MATCHLINE SHEET UC-4C

MATCHLINE SHEET UC-7B
-Y2- STA. 91+00.00
-Y2FLYCA- STA. 29+98.44

REVISIONS

5/14/23



PROJECT REFERENCE NO.	SHEET NO.
U-2579AA	UC-6A
DESIGNED BY: DMP	
DRAWN BY: DMP	
CHECKED BY: DMP	
APPROVED BY:	
REVISED:	
NORTH CAROLINA DEPARTMENT OF TRANSPORTATION	5/2/2022
UTILITIES ENGINEERING SEC. PHONE: (919) 707-6690 FAX: (919) 250-4151	UTILITY CONSTRUCTION PLANS ONLY

UTILITY CONSTRUCTION

DOCUMENT NOT CONSIDERED FINAL UNLESS ALL SIGNATURES COMPLETED

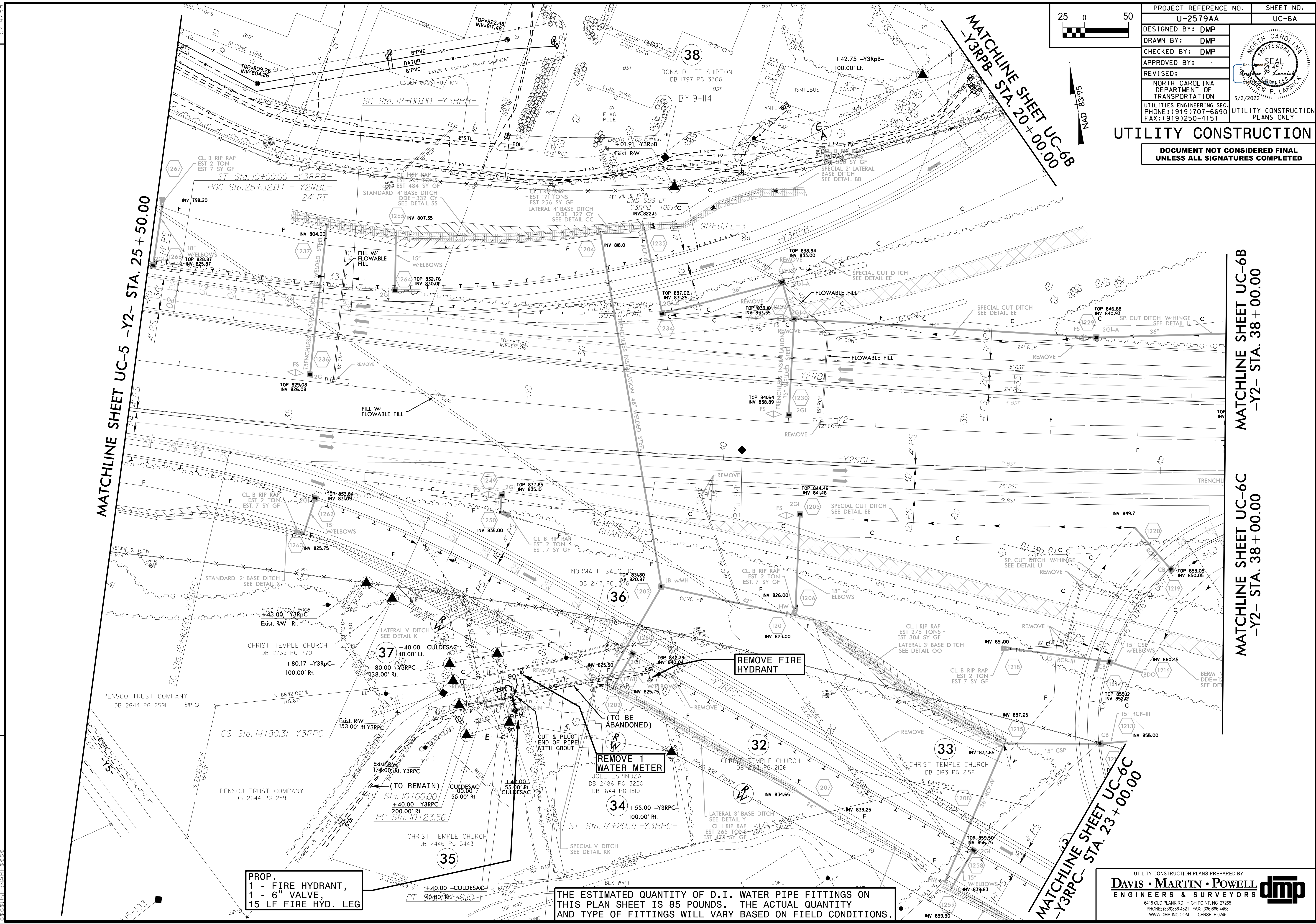
MATCHLINE SHEET UC-5 -Y2- STA. 25 + 50.00

MATCHLINE SHEET UC-6B -Y3RPC- STA. 20 + 00.00

MATCHLINE SHEET UC-6B -Y2- STA. 38 + 00.00

MATCHLINE SHEET UC-6C -Y2- STA. 38 + 00.00

MATCHLINE SHEET UC-6C -Y3RPC- STA. 23 + 00.00



REVISIONS

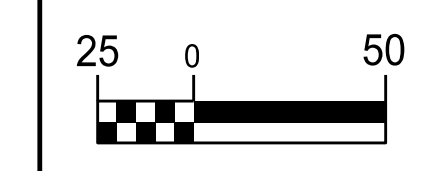
PROP.
1 - FIRE HYDRANT,
1 - 6" VALVE,
15 LF FIRE HYD. LEG

THE ESTIMATED QUANTITY OF D.I. WATER PIPE FITTINGS ON THIS PLAN SHEET IS 85 POUNDS. THE ACTUAL QUANTITY AND TYPE OF FITTINGS WILL VARY BASED ON FIELD CONDITIONS.

UTILITY CONSTRUCTION PLANS PREPARED BY:
DAVIS • MARTIN • POWELL
ENGINEERS & SURVEYORS

6415 OLD PLANK RD., HIGH POINT, NC 27265
PHONE: (336) 886-4821 FAX: (336) 886-4458
WWW.DMP-INC.COM LICENSE: P-62445

5/14/23



PROJECT REFERENCE NO.	SHEET NO.
U-2579AA	UC-6C
DESIGNED BY: DMP	
DRAWN BY: DMP	
CHECKED BY: DMP	
APPROVED BY:	
REVISED:	
NORTH CAROLINA DEPARTMENT OF TRANSPORTATION UTILITIES ENGINEERING SEC. PHONE: (919) 707-6690 FAX: (919) 250-4151 UTILITY CONSTRUCTION PLANS ONLY	

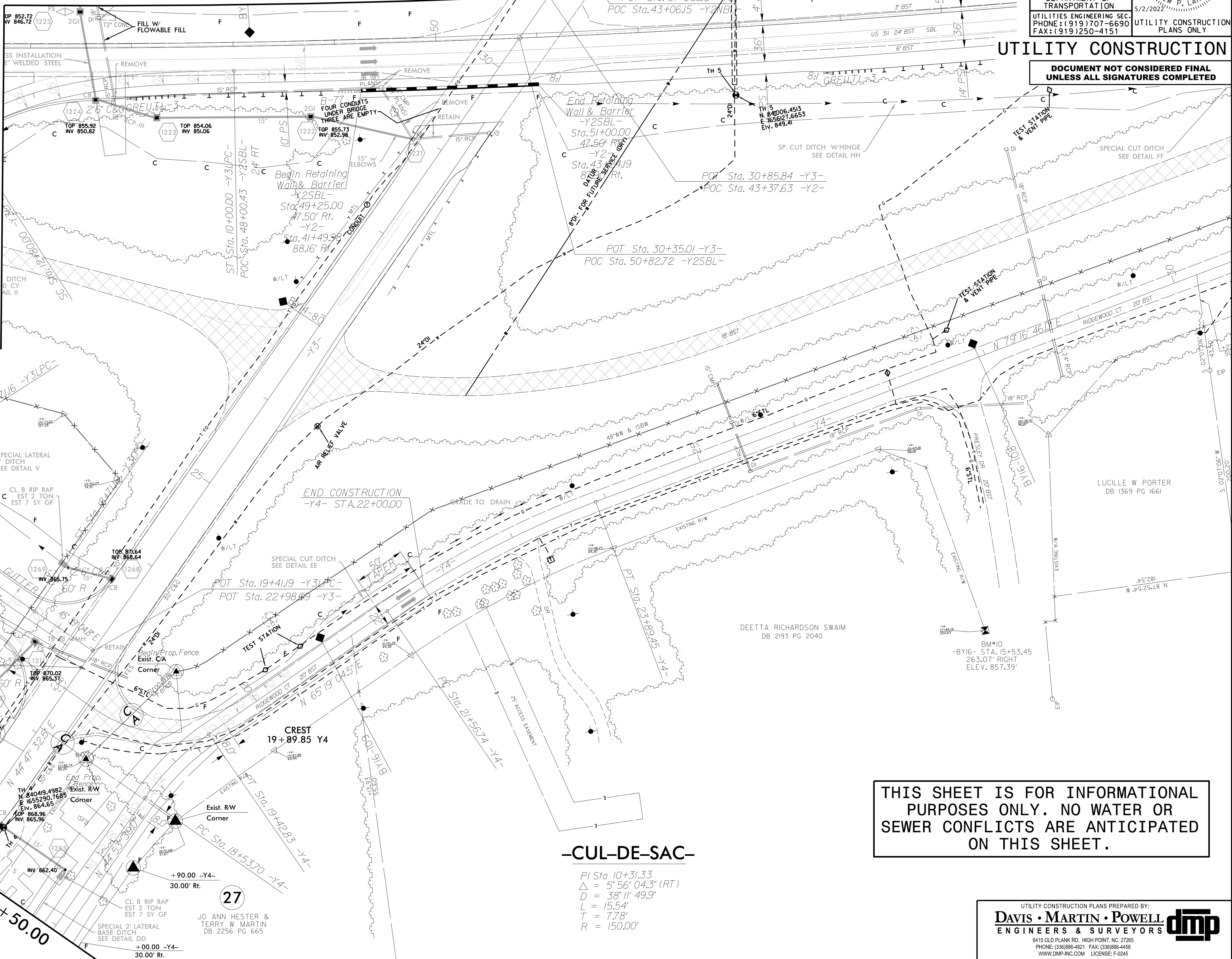
UTILITY CONSTRUCTION
DOCUMENT NOT CONSIDERED FINAL UNLESS ALL SIGNATURES COMPLETED

MATCHLINE SHEET UC-6B

MATCHLINE SHEET UC-6A
 -Y2- STA. 38 + 00.00

MATCHLINE SHEET UC-6A
 -Y3RPC- STA. 23 + 00.00

MATCHLINE SHEET UC-10
 -Y3- STA. 20 + 50.00



REVISIONS

THIS SHEET IS FOR INFORMATIONAL PURPOSES ONLY. NO WATER OR SEWER CONFLICTS ARE ANTICIPATED ON THIS SHEET.

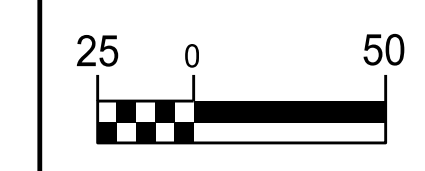
-CUL-DE-SAC-

PI Sta. 10+31.33
 $\Delta = 5^\circ 56' 04.3''$ (RT)
 $D = 38' 11'' 49.9''$
 $L = 15.54'$
 $T = 7.78'$
 $R = 150.00'$

27

JO ANN HESTER &
 TERRY W. MARTIN
 DB 2256 PG 665

UTILITY CONSTRUCTION PLANS PREPARED BY:
DAVIS • MARTIN • POWELL
 ENGINEERS & SURVEYORS
 6415 OLD PLANK RD., HIGH POINT, NC 27265
 PHONE: (336) 886-4821 FAX: (336) 886-4458
 WWW.DMP-INC.COM LICENSE: F-0245



PROJECT REFERENCE NO.	SHEET NO.
U-2579AA	UC-7A
DESIGNED BY: DMP	
DRAWN BY: DMP	
CHECKED BY: DMP	
APPROVED BY:	
REVISED:	
NORTH CAROLINA DEPARTMENT OF TRANSPORTATION	5/2/2022
UTILITIES ENGINEERING SEC. PHONE: (919) 707-6690 FAX: (919) 250-4151	UTILITY CONSTRUCTION PLANS ONLY

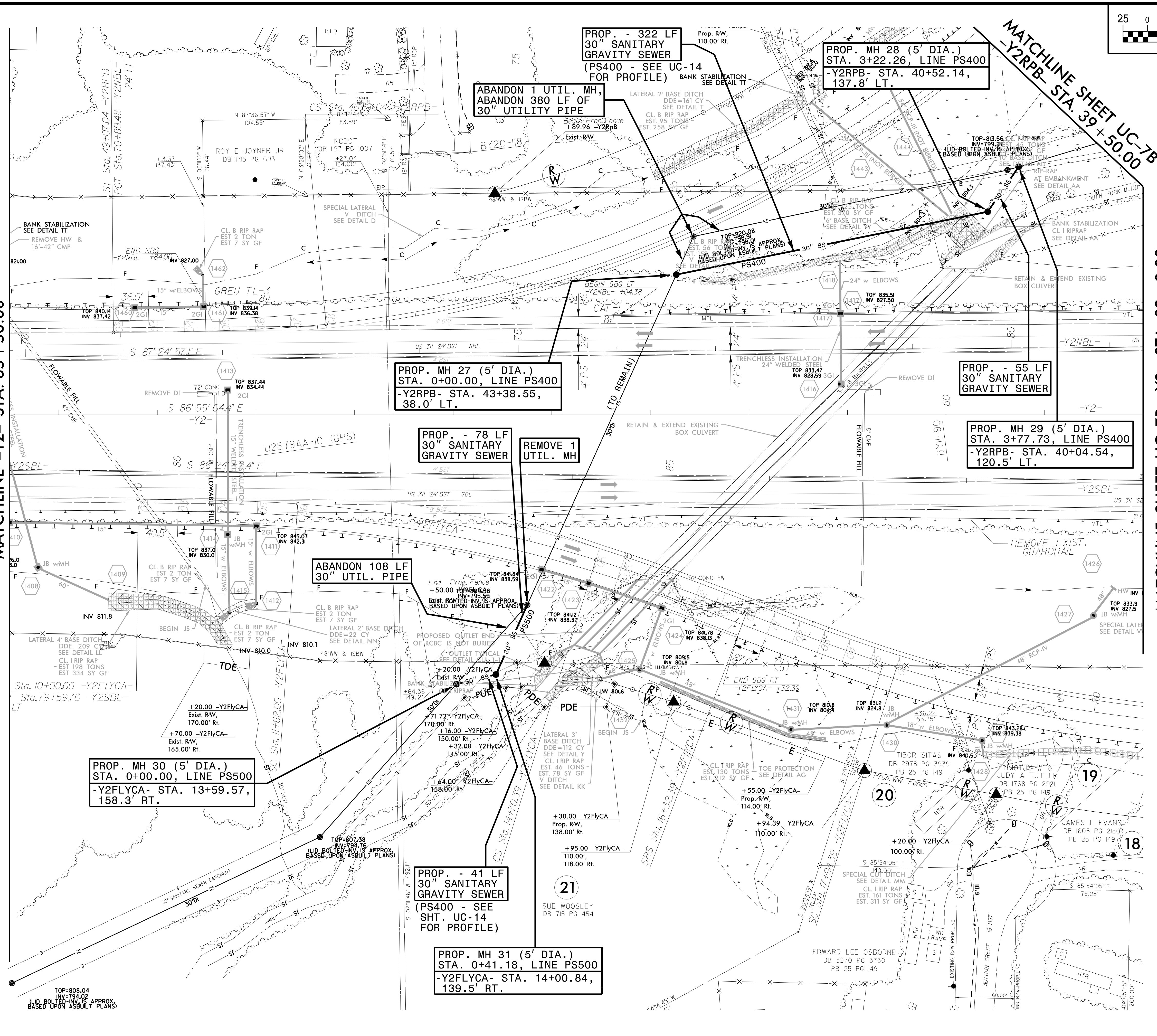
UTILITY CONSTRUCTION

DOCUMENT NOT CONSIDERED FINAL UNLESS ALL SIGNATURES COMPLETED

MATCHLINE -Y2- STA. 65 + 50.00

MATCHLINE SHEET UC-7B -Y2RPB- STA. 39 + 50.00

MATCHLINE SHEET UC-7B -Y2- STA. 82 + 0.00



PROP. MH 30 (5' DIA.)
 STA. 0+00.00, LINE PS500
 -Y2FLYCA- STA. 13+59.57,
 158.3' RT.

PROP. - 41 LF
 30" SANITARY GRAVITY SEWER
 (PS400 - SEE SHT. UC-14 FOR PROFILE)

PROP. MH 31 (5' DIA.)
 STA. 0+41.18, LINE PS500
 -Y2FLYCA- STA. 14+00.84,
 139.5' RT.

PROP. MH 27 (5' DIA.)
 STA. 0+00.00, LINE PS400
 -Y2RPB- STA. 43+38.55,
 38.0' LT.

PROP. - 78 LF
 30" SANITARY GRAVITY SEWER
 REMOVE 1 UTIL. MH

ABANDON 108 LF
 30" UTIL. PIPE

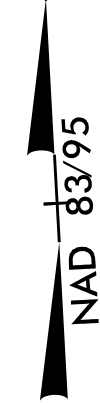
PROP. - 322 LF
 30" SANITARY GRAVITY SEWER
 (PS400 - SEE UC-14 FOR PROFILE)

PROP. MH 28 (5' DIA.)
 STA. 3+22.26, LINE PS400
 -Y2RPB- STA. 40+52.14,
 137.8' LT.

PROP. - 55 LF
 30" SANITARY GRAVITY SEWER

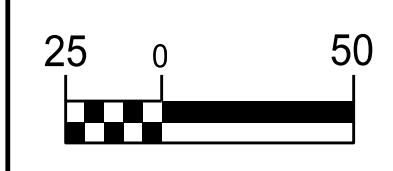
PROP. MH 29 (5' DIA.)
 STA. 3+77.73, LINE PS400
 -Y2RPB- STA. 40+04.54,
 120.5' LT.

REVISIONS



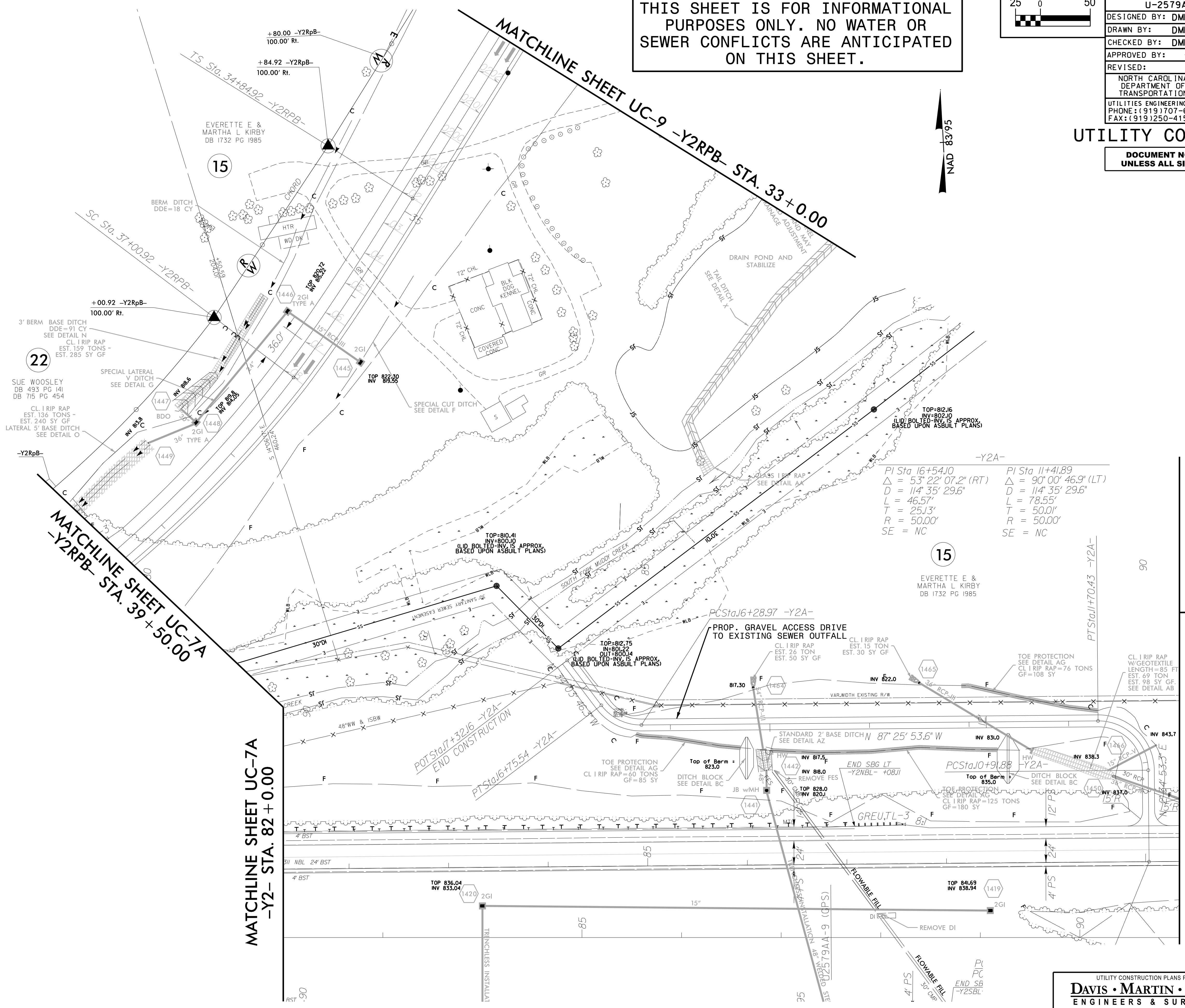
5/14/23

THIS SHEET IS FOR INFORMATIONAL PURPOSES ONLY. NO WATER OR SEWER CONFLICTS ARE ANTICIPATED ON THIS SHEET.



PROJECT REFERENCE NO.	SHEET NO.
U-2579AA	UC-7B
DESIGNED BY: DMP	
DRAWN BY: DMP	
CHECKED BY: DMP	
APPROVED BY:	
REVISED:	
NORTH CAROLINA DEPARTMENT OF TRANSPORTATION	5/2/2023
UTILITIES ENGINEERING SEC. PHONE: (919) 707-6690 FAX: (919) 250-4151	UTILITY CONSTRUCTION PLANS ONLY

UTILITY CONSTRUCTION DOCUMENT NOT CONSIDERED FINAL UNLESS ALL SIGNATURES COMPLETED



22

15

$PI\ Sta\ 16+54.10$ $\Delta = 53' 22'' 07.2'' (RT)$ $D = 114' 35'' 29.6''$ $L = 46.57'$ $T = 25.13'$ $R = 50.00'$ $SE = NC$	$PI\ Sta\ 11+41.89$ $\Delta = 90' 00'' 46.9'' (LT)$ $D = 114' 35'' 29.6''$ $L = 78.55'$ $T = 50.00'$ $R = 50.00'$ $SE = NC$
---	---

REVISIONS

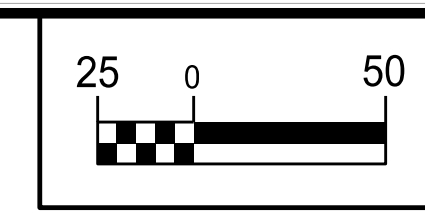
5/14/23

MATCHLINE SHEET UC-7A -Y2- STA. 82 + 0.00

MATCHLINE SHEET UC-4C

MATCHLINE SHEET UC-4D -Y2- STA. 91 + 00.00

5/14/99

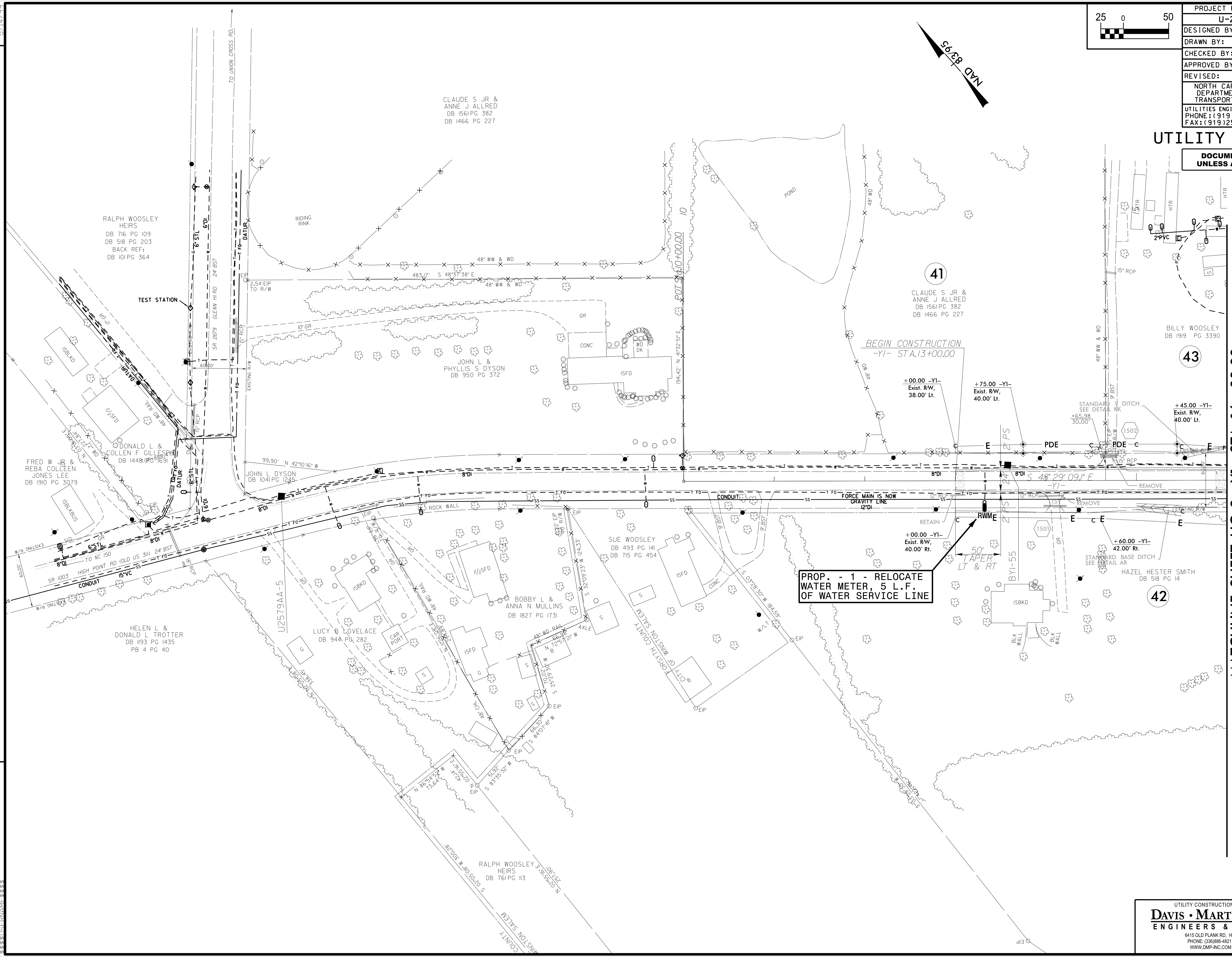


PROJECT REFERENCE NO. U-2579AA	SHEET NO. UC-8
DESIGNED BY: DMP	
DRAWN BY: DMP	
CHECKED BY: DMP	
APPROVED BY:	
REVISED:	
NORTH CAROLINA DEPARTMENT OF TRANSPORTATION 5/2/2022 UTILITIES ENGINEERING SEC. PHONE: (919) 707-6690 FAX: (919) 250-4151	
UTILITY CONSTRUCTION PLANS ONLY	

UTILITY CONSTRUCTION

DOCUMENT NOT CONSIDERED FINAL
UNLESS ALL SIGNATURES COMPLETED

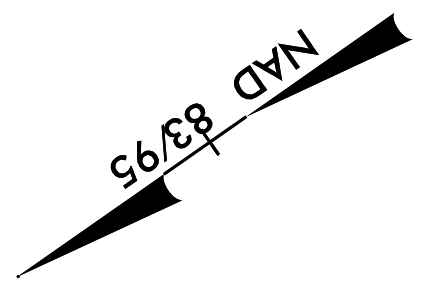
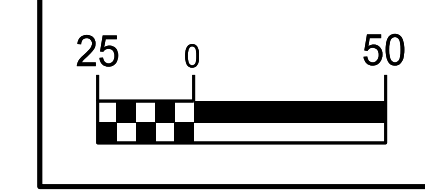
REVISIONS



MATCHLINE SHEET UC-9 -Y1- STA. 16 + 00.00

5/21/2023

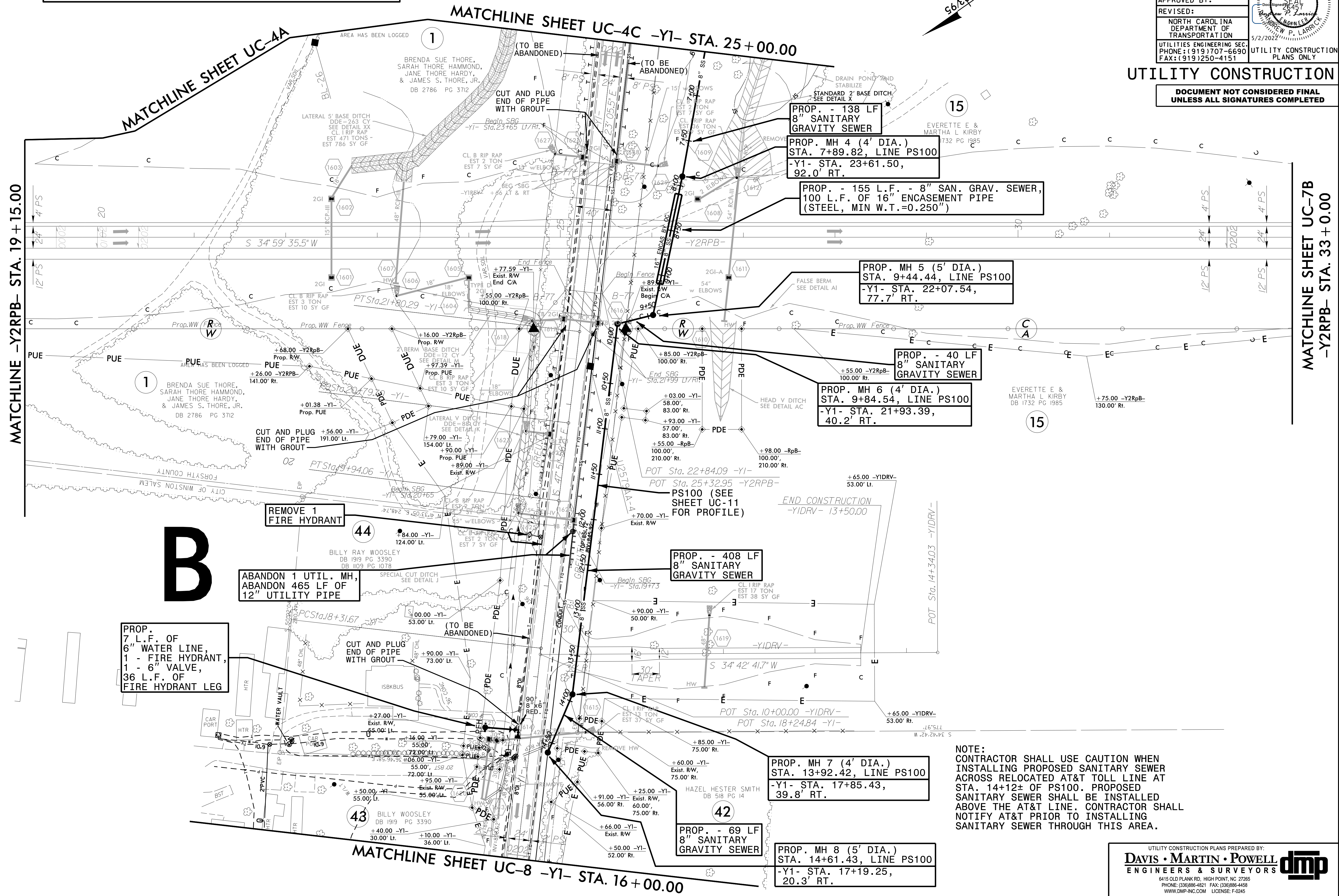
THE ESTIMATED QUANTITY OF D.I. WATER PIPE FITTINGS ON THIS PLAN SHEET IS 180 POUNDS. THE ACTUAL QUANTITY AND TYPE OF FITTINGS WILL VARY BASED ON FIELD CONDITIONS.



PROJECT REFERENCE NO.	SHEET NO.
U-2579AA	UC-9
DESIGNED BY: DMP	
DRAWN BY: DMP	
CHECKED BY: DMP	
APPROVED BY:	
REVISED:	5/2/2023
NORTH CAROLINA DEPARTMENT OF TRANSPORTATION	
UTILITIES ENGINEERING SEC. PHONE: (919) 707-6690 FAX: (919) 250-4151	UTILITY CONSTRUCTION PLANS ONLY

UTILITY CONSTRUCTION

DOCUMENT NOT CONSIDERED FINAL UNLESS ALL SIGNATURES COMPLETED

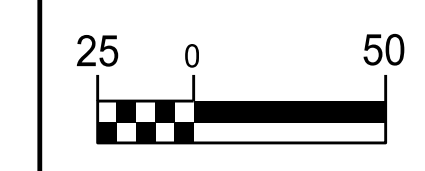


REVISIONS

B

NOTE:
 CONTRACTOR SHALL USE CAUTION WHEN INSTALLING PROPOSED SANITARY SEWER ACROSS RELOCATED AT&T TOLL LINE AT STA. 14+12± OF PS100. PROPOSED SANITARY SEWER SHALL BE INSTALLED ABOVE THE AT&T LINE. CONTRACTOR SHALL NOTIFY AT&T PRIOR TO INSTALLING SANITARY SEWER THROUGH THIS AREA.

5/14/23



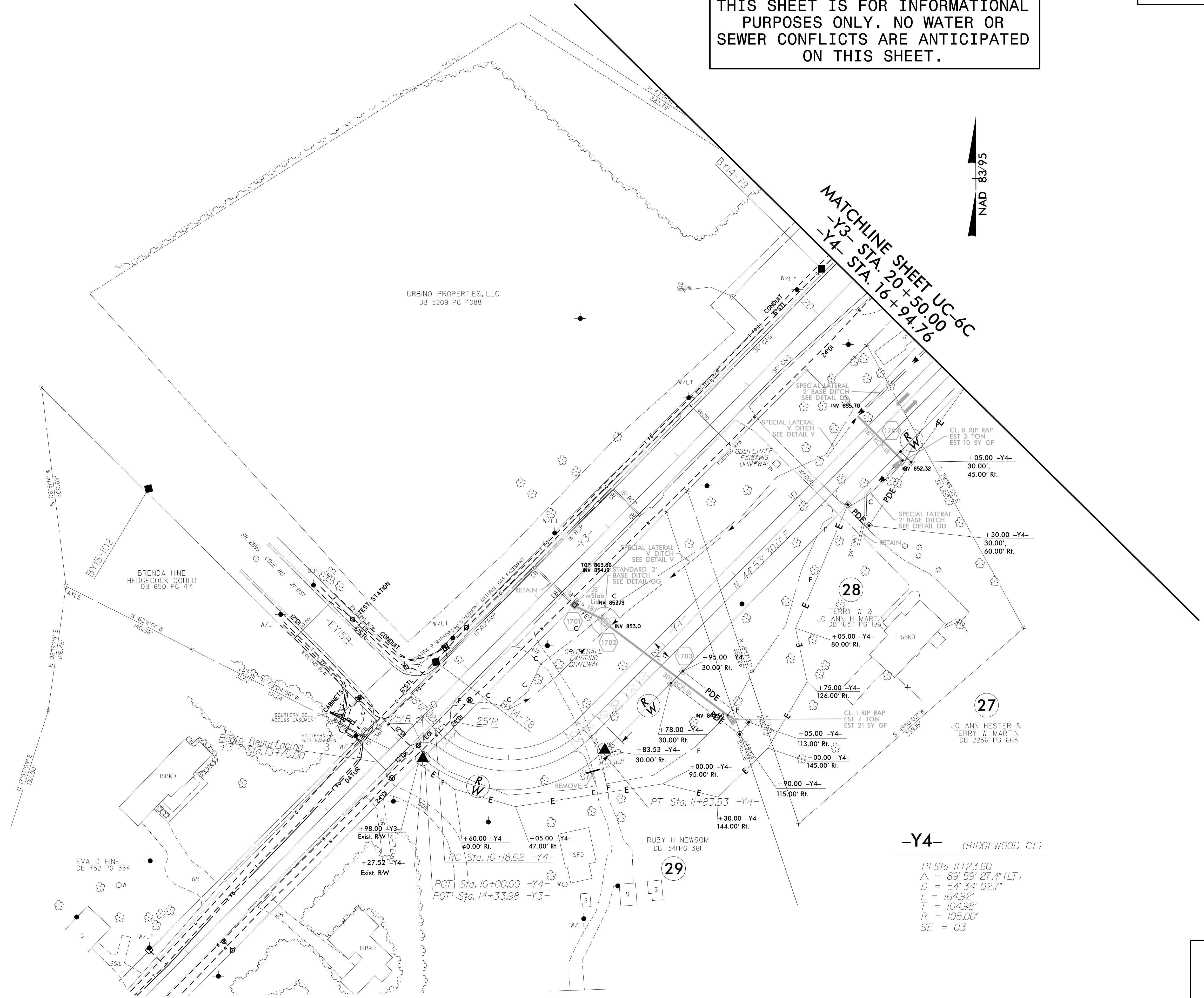
PROJECT REFERENCE NO. U-2579AA	SHEET NO. UC-10
DESIGNED BY: DMP	
DRAWN BY: DMP	
CHECKED BY: DMP	
APPROVED BY:	
REVISED:	
NORTH CAROLINA DEPARTMENT OF TRANSPORTATION	5/2/2023
UTILITIES ENGINEERING SEC. PHONE: (919) 707-6690 FAX: (919) 250-4151	UTILITY CONSTRUCTION PLANS ONLY

THIS SHEET IS FOR INFORMATIONAL PURPOSES ONLY. NO WATER OR SEWER CONFLICTS ARE ANTICIPATED ON THIS SHEET.

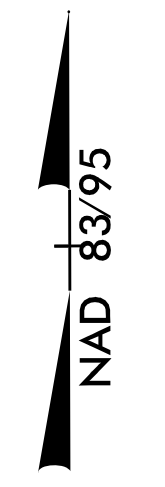
UTILITY CONSTRUCTION

DOCUMENT NOT CONSIDERED FINAL UNLESS ALL SIGNATURES COMPLETED

REVISIONS



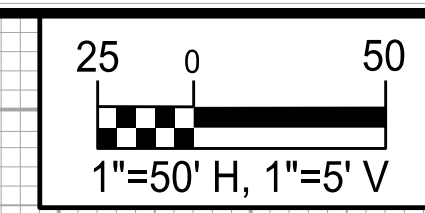
MATCHLINE SHEET UC-6C
-Y3- STA. 20+50.00
-Y4- STA. 16+94.76



-Y4- (RIDGWOOD CT)

$PI\ Sta\ 11+23.60$
 $\Delta = 89^\circ 59' 27.4'' (LT)$
 $D = 54' 34.027''$
 $L = 164.92'$
 $T = 104.98'$
 $R = 105.00'$
 $SE = 03$

5/14/99

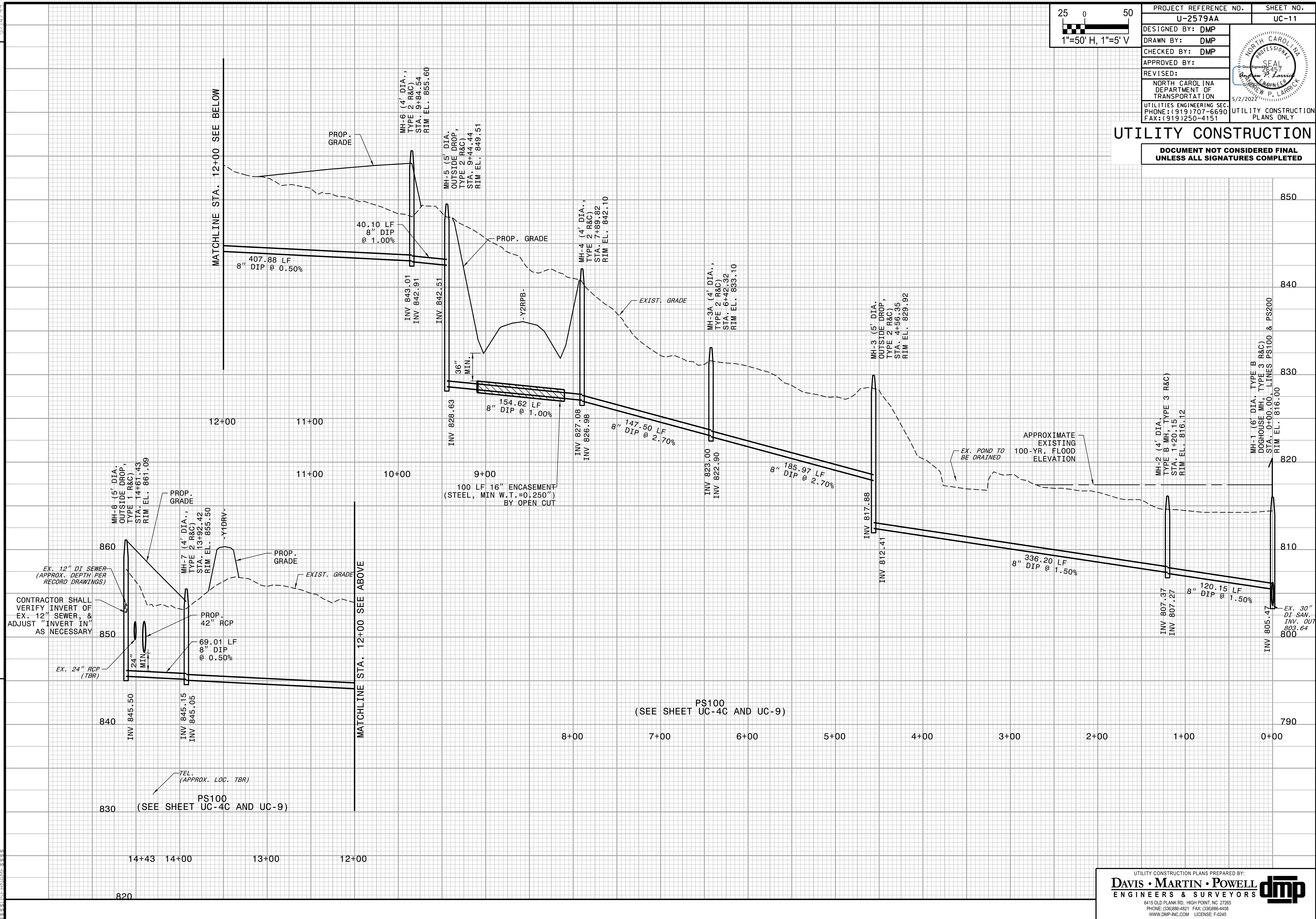


PROJECT REFERENCE NO. U-2579AA	SHEET NO. UC-11
DESIGNED BY: DMP	
DRAWN BY: DMP	
CHECKED BY: DMP	
APPROVED BY:	
REVISED:	
NORTH CAROLINA DEPARTMENT OF TRANSPORTATION UTILITIES ENGINEERING SEC. PHONE: (919) 707-6690 FAX: (919) 250-4151 UTILITY CONSTRUCTION PLANS ONLY	

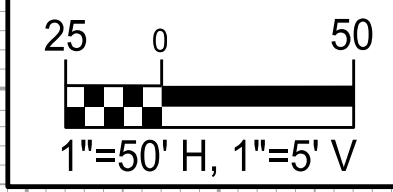
UTILITY CONSTRUCTION

DOCUMENT NOT CONSIDERED FINAL UNLESS ALL SIGNATURES COMPLETED

REVISIONS



5/14/99

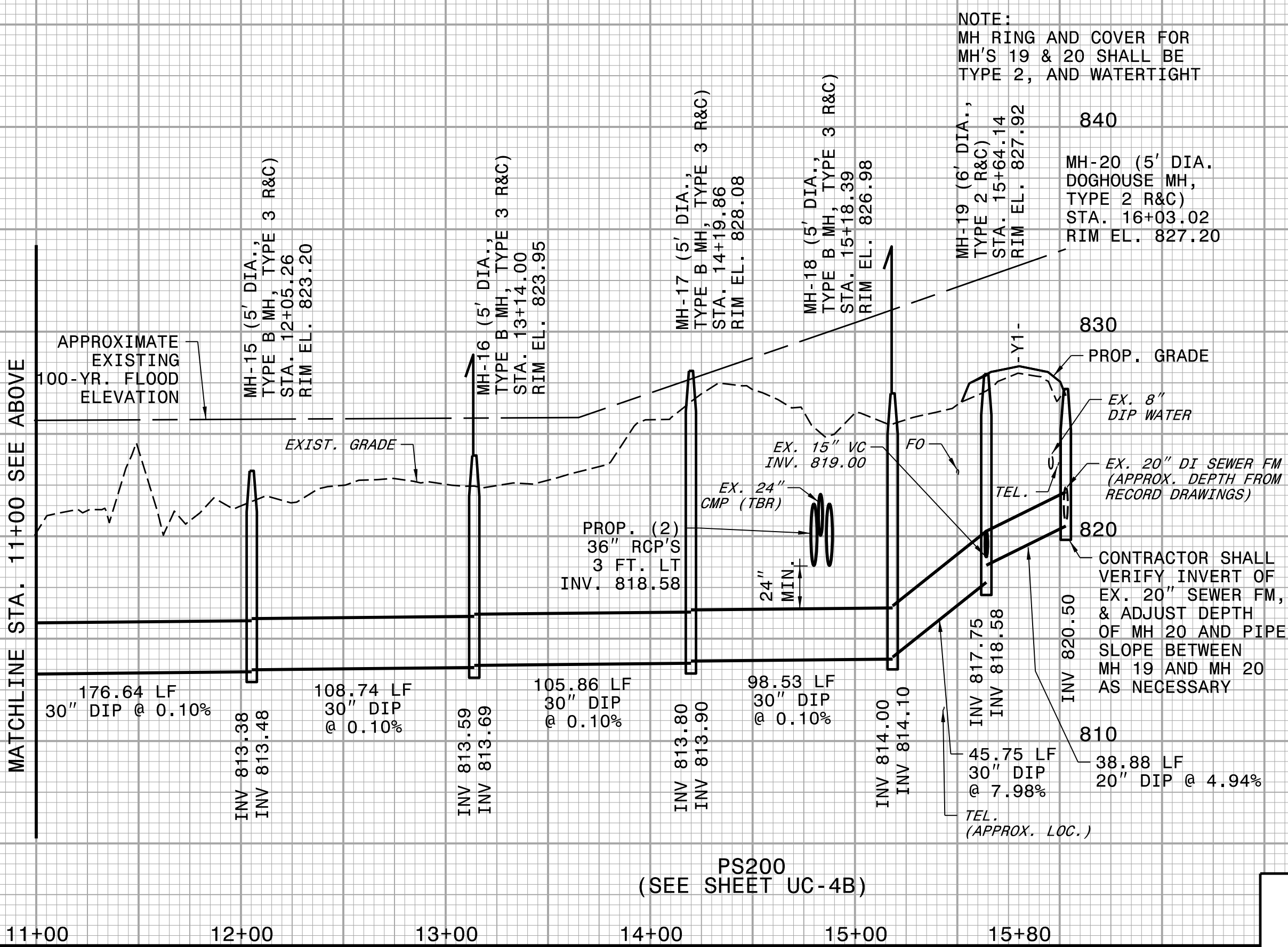
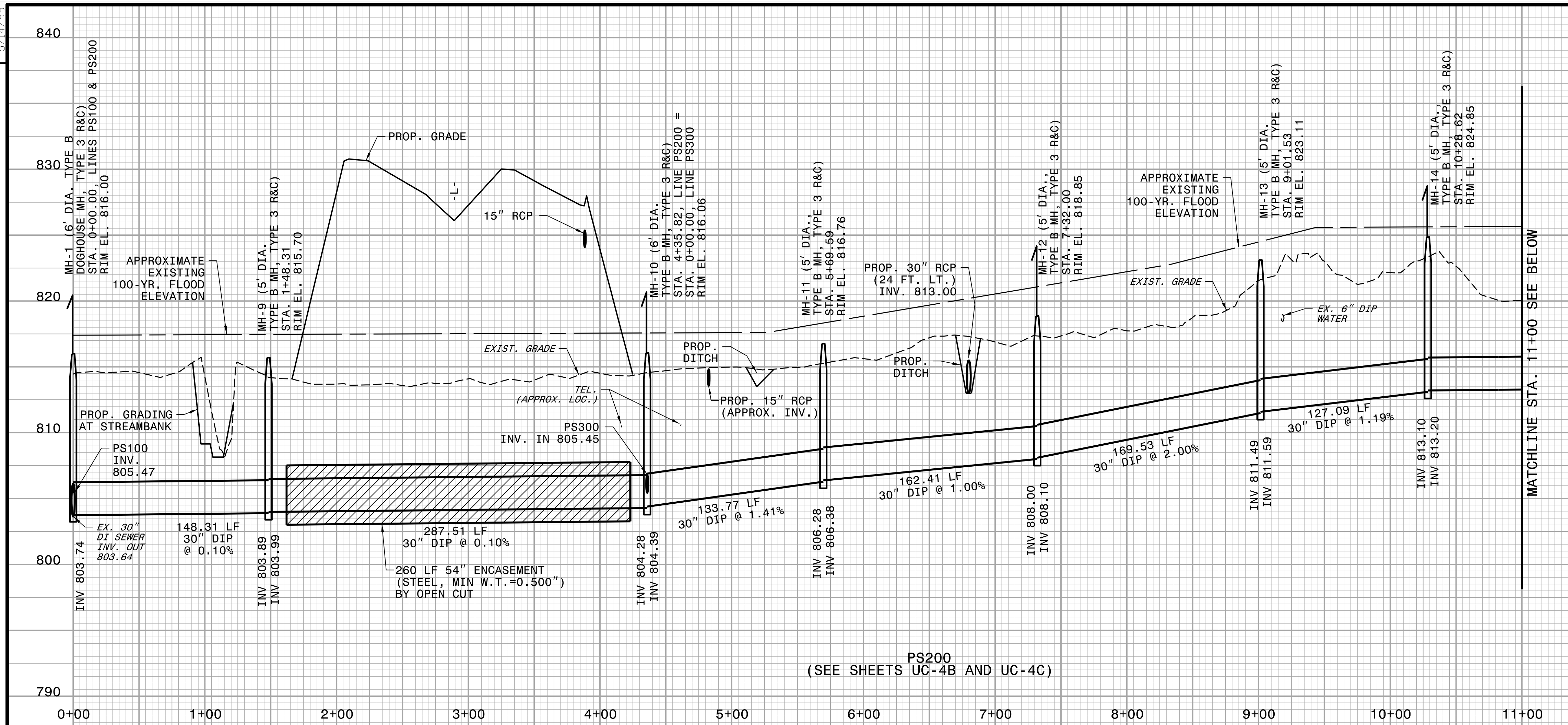


PROJECT REFERENCE NO. U-2579AA	SHEET NO. UC-12
DESIGNED BY: DMP	
DRAWN BY: DMP	
CHECKED BY: DMP	
APPROVED BY:	
REVISED:	
NORTH CAROLINA DEPARTMENT OF TRANSPORTATION 5/2/2023 UTILITIES ENGINEERING SEC. PHONE: (919) 707-6690 FAX: (919) 250-4151	
UTILITY CONSTRUCTION PLANS ONLY	

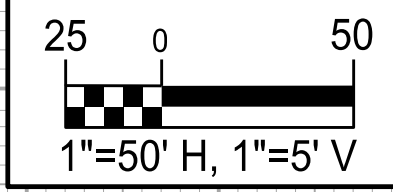
UTILITY CONSTRUCTION

DOCUMENT NOT CONSIDERED FINAL
UNLESS ALL SIGNATURES COMPLETED

REVISIONS



5/14/99

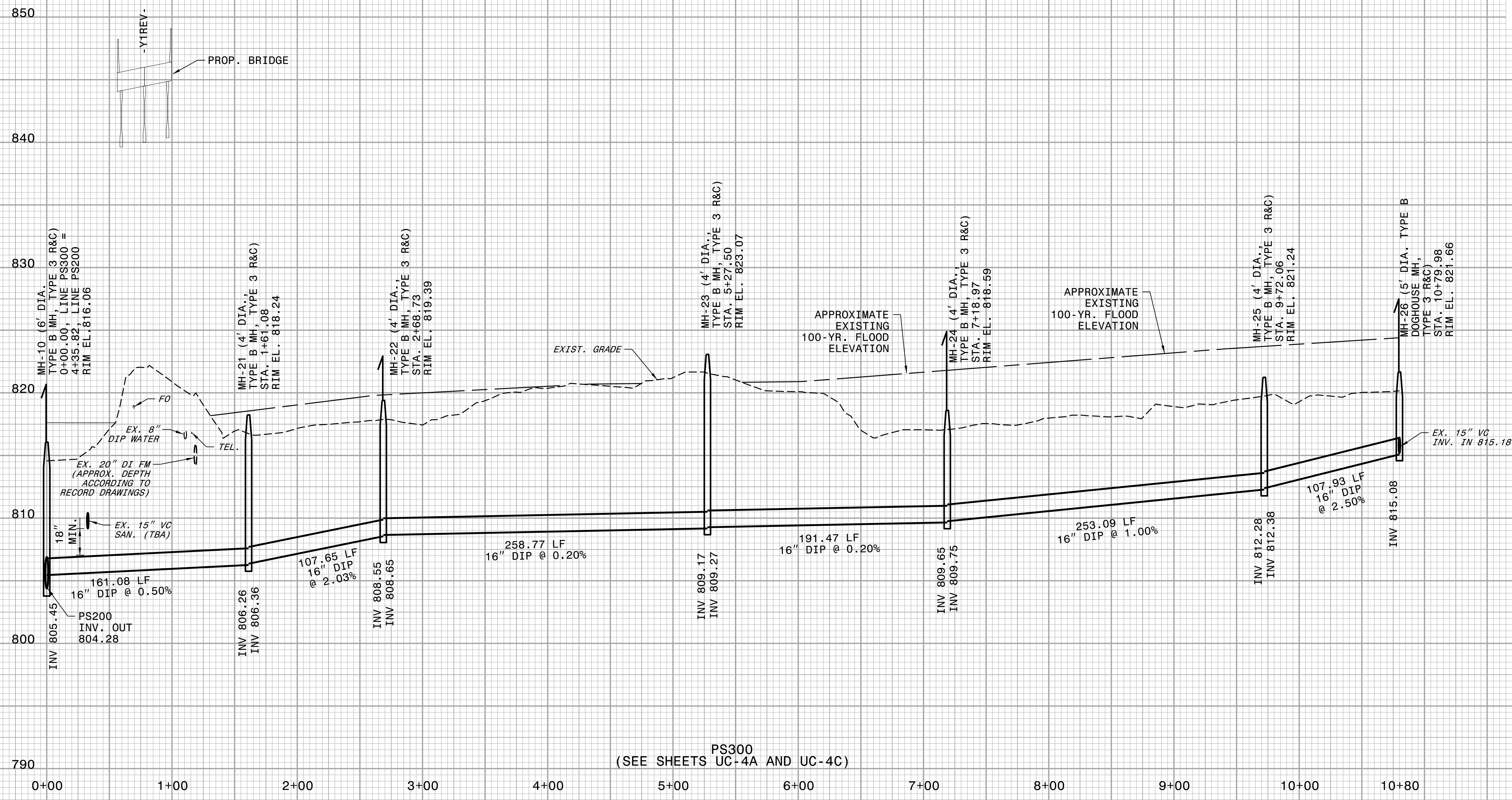


PROJECT REFERENCE NO. U-2579AA	SHEET NO. UC-13
DESIGNED BY: DMP	
DRAWN BY: DMP	
CHECKED BY: DMP	
APPROVED BY:	
REVISED:	5/2/2022
NORTH CAROLINA DEPARTMENT OF TRANSPORTATION	
UTILITIES ENGINEERING SEC. PHONE: (919) 707-6690 FAX: (919) 250-4151	UTILITY CONSTRUCTION PLANS ONLY

UTILITY CONSTRUCTION

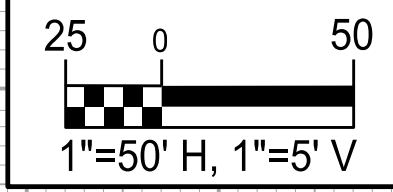
**DOCUMENT NOT CONSIDERED FINAL
UNLESS ALL SIGNATURES COMPLETED**

REVISIONS



PS300
(SEE SHEETS UC-4A AND UC-4C)

5/14/23



PROJECT REFERENCE NO.	SHEET NO.
U-2579AA	UC-14
DESIGNED BY: DMP	
DRAWN BY: DMP	
CHECKED BY: DMP	
APPROVED BY:	
REVISED:	
NORTH CAROLINA DEPARTMENT OF TRANSPORTATION	
UTILITIES ENGINEERING SEC. PHONE: (919) 707-6690 FAX: (919) 250-4151	
UTILITY CONSTRUCTION PLANS ONLY	

UTILITY CONSTRUCTION

DOCUMENT NOT CONSIDERED FINAL UNLESS ALL SIGNATURES COMPLETED

REVISIONS

