

**This electronic collection of documents is provided  
for the convenience of the user  
and is Not a Certified Document –**

**The documents contained herein were originally issued  
and sealed by the individuals whose names and license  
numbers appear on each page, on the dates appearing  
with their signature on that page.**

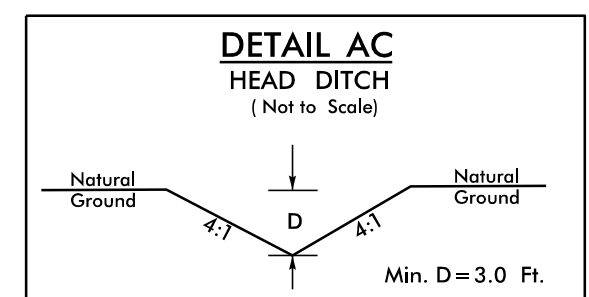
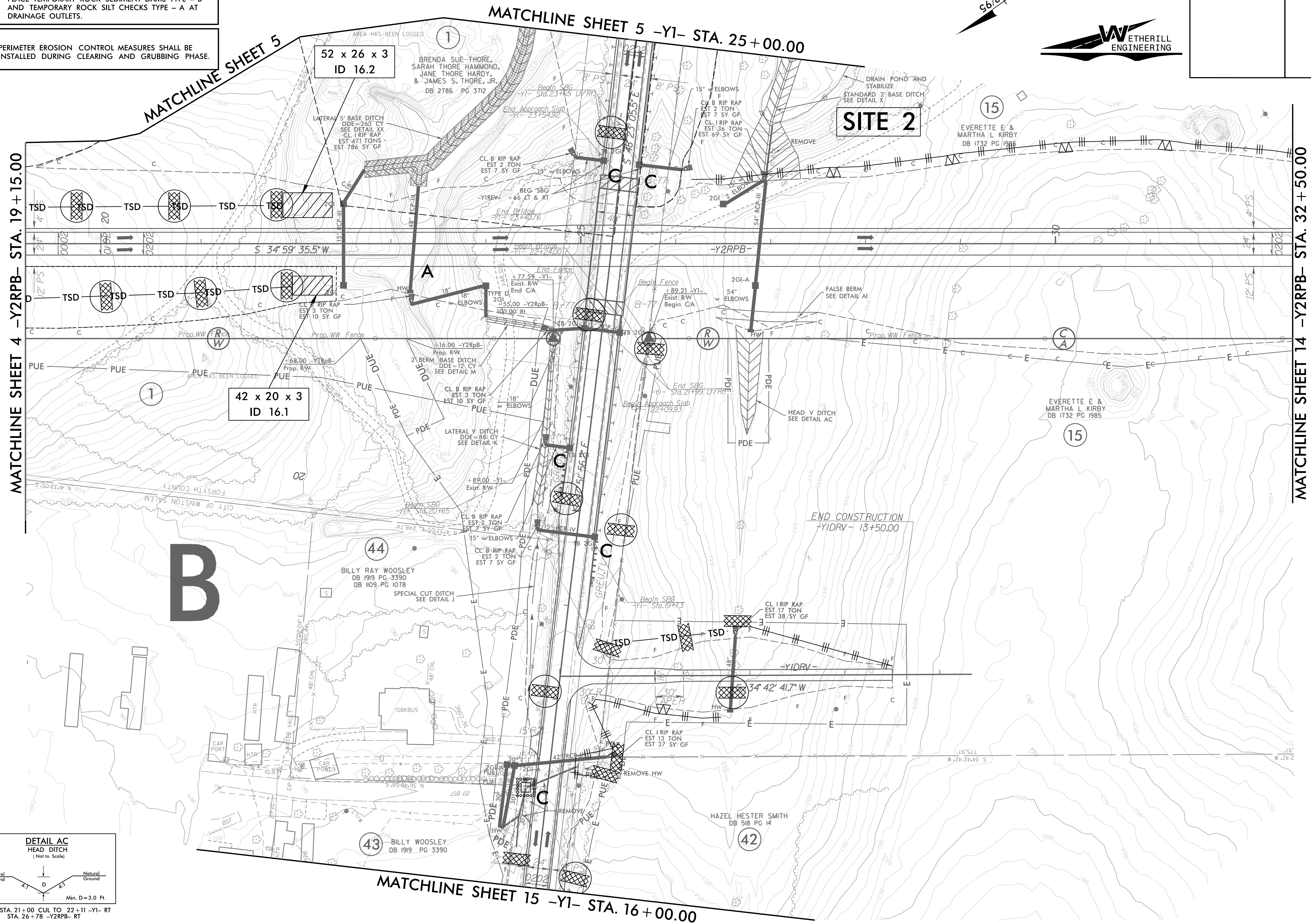
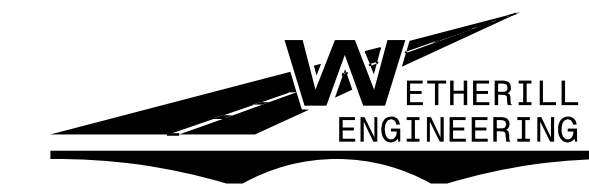
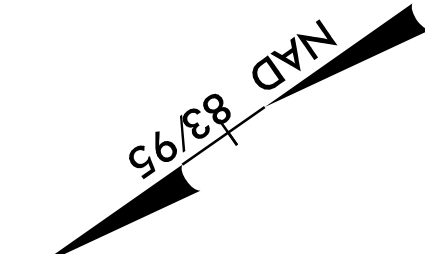
**This file or an individual page  
shall not be considered a certified document.**

PROJECT REFERENCE NO.	SHEET NO.
U-2579AA	EC-16/CONST.16
RW SHEET NO.	
ROADWAY DESIGN ENGINEER	HYDRAULICS ENGINEER

CLEARING AND GRUBBING  
EROSION CONTROL FOR  
CONSTRUCTION SHEET 16

NOTE:  
PLACE TEMPORARY ROCK SEDIMENT DAMS TYPE - B  
AND TEMPORARY ROCK SILT CHECKS TYPE - A AT  
DRAINAGE OUTLETS.

NOTE:  
PERIMETER EROSION CONTROL MEASURES SHALL BE  
INSTALLED DURING CLEARING AND GRUBBING PHASE.



FROM STA. 21+00 CUL TO 22+11 -Y1- RT  
STA. 26+78 -Y2RPB- RT

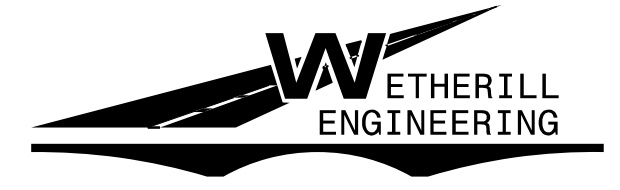
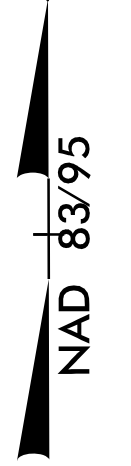
8/17/99  
5/21/2022  
U:\2579AA\EC\_CG\_psh\_16.dgn  
11:14:11 AM

CLEARING AND GRUBBING  
EROSION CONTROL FOR  
CONSTRUCTION SHEET 17

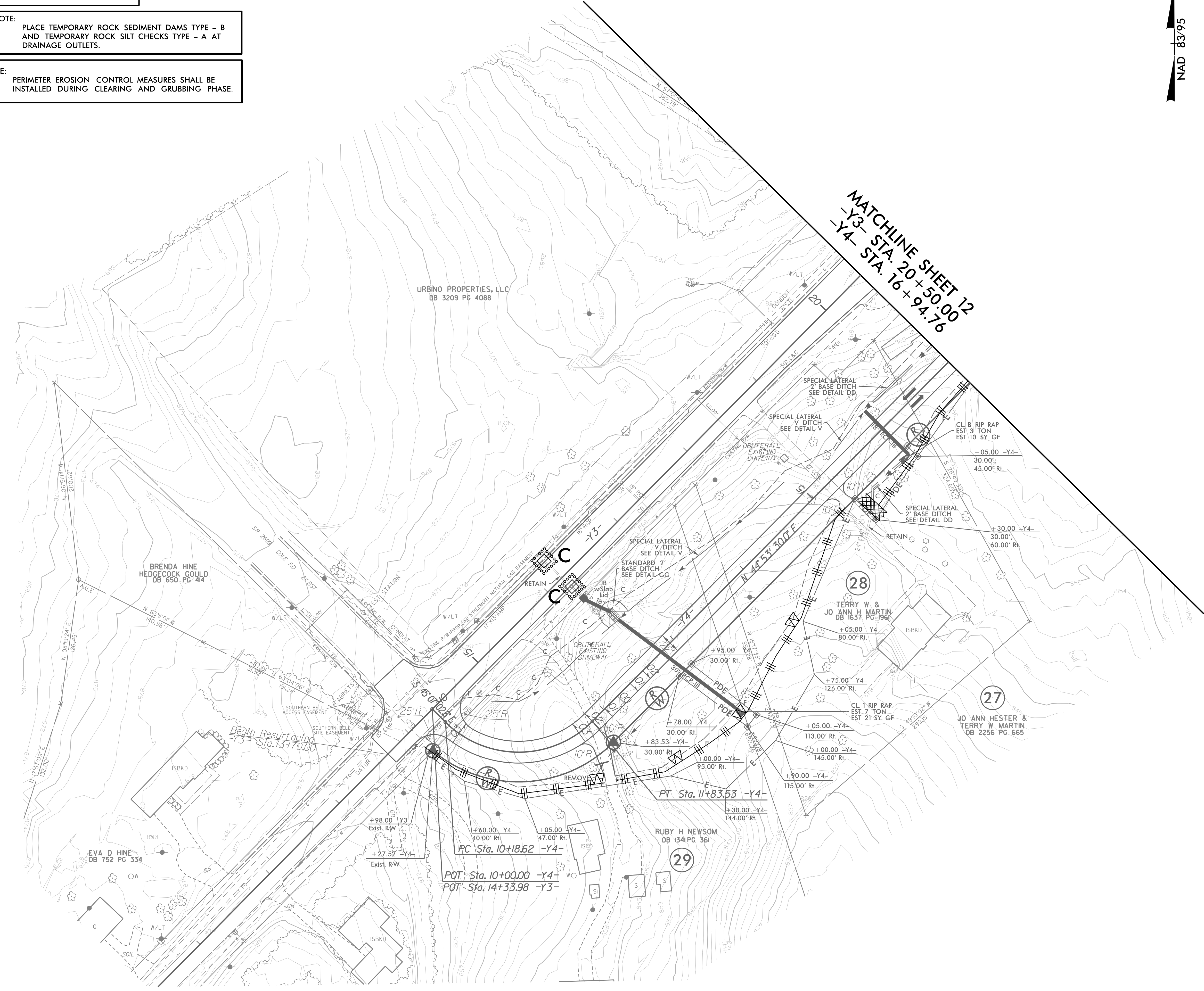
NOTE:  
PLACE TEMPORARY ROCK SEDIMENT DAMS TYPE - B  
AND TEMPORARY ROCK SILT CHECKS TYPE - A AT  
DRAINAGE OUTLETS.

NOTE:  
PERIMETER EROSION CONTROL MEASURES SHALL BE  
INSTALLED DURING CLEARING AND GRUBBING PHASE.

PROJECT REFERENCE NO. <b>U-2579AA</b>	SHEET NO. <i>EC-17/CONST.17</i>
RW SHEET NO.	
ROADWAY DESIGN ENGINEER	HYDRAULICS ENGINEER



MATCHLINE SHEET 12  
-Y3- STA. 20+50.00  
-Y4- STA. 16+94.76



REVISIONS

8/17/99

5/21/2022  
U:\2579AA-EC-CC-ps-h\_17.dgn  
11:34:41 AM

PROJECT REFERENCE NO.	SHEET NO.
U-2579AA	EC-18/CONST.4
RW SHEET NO.	
ROADWAY DESIGN ENGINEER	HYDRAULICS ENGINEER



**BEGIN TIP PROJECT U-2579AA**  
**-L- POT Sta. 10+00.00 =**  
**END TIP PROJECT U-2579AB**  
**-L- POT Sta. 836+32.44**

**A**

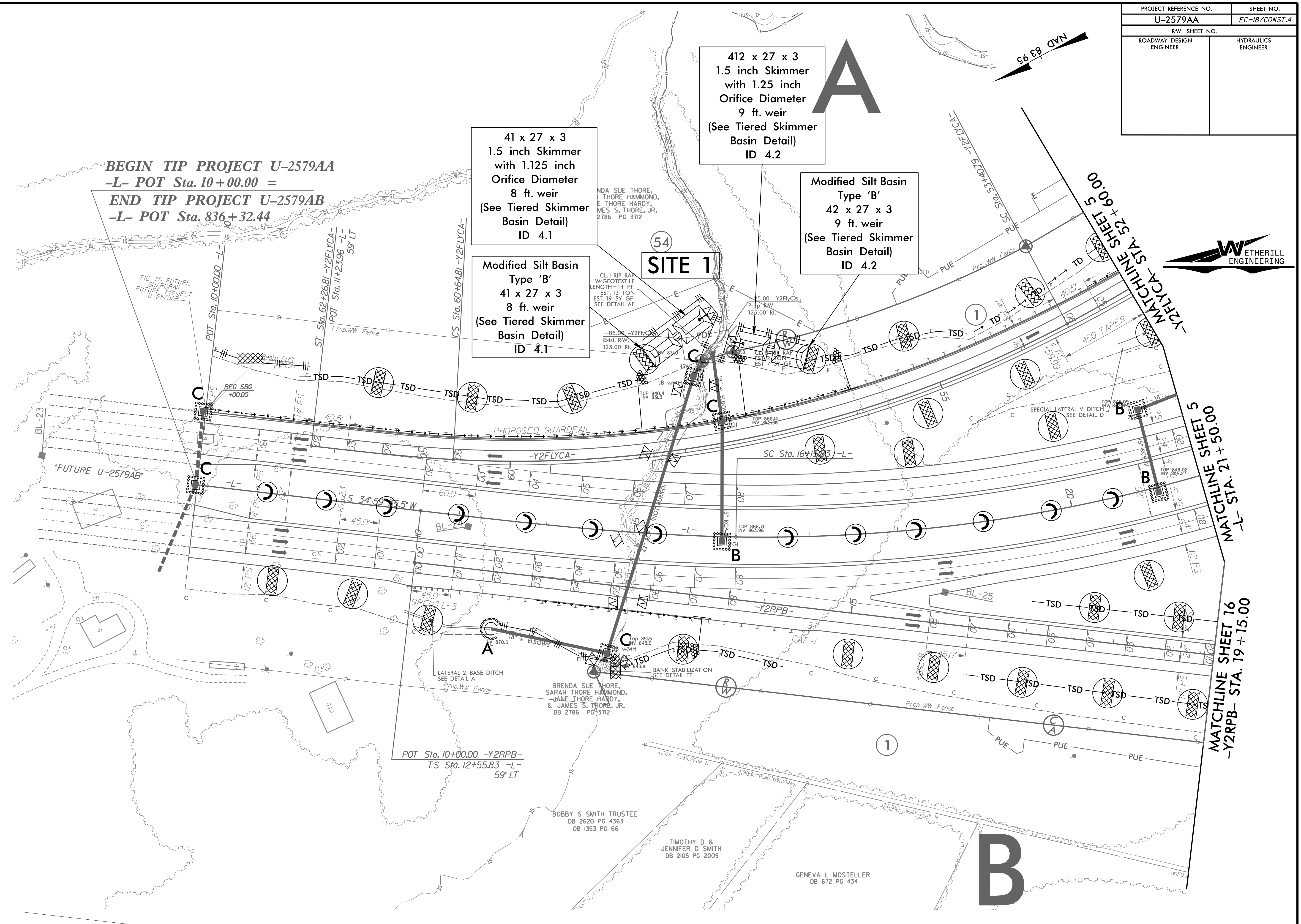
412 x 27 x 3  
 1.5 inch Skimmer  
 with 1.25 inch  
 Orifice Diameter  
 9 ft. weir  
 (See Tiered Skimmer  
 Basin Detail)  
 ID 4.2

41 x 27 x 3  
 1.5 inch Skimmer  
 with 1.125 inch  
 Orifice Diameter  
 8 ft. weir  
 (See Tiered Skimmer  
 Basin Detail)  
 ID 4.1

Modified Silt Basin  
 Type 'B'  
 42 x 27 x 3  
 9 ft. weir  
 (See Tiered Skimmer  
 Basin Detail)  
 ID 4.2

Modified Silt Basin  
 Type 'B'  
 41 x 27 x 3  
 8 ft. weir  
 (See Tiered Skimmer  
 Basin Detail)  
 ID 4.1

**SITE 1**



MATCHLINE SHEET 5  
 STA. 32+60.00

MATCHLINE SHEET 5  
 STA. 21+50.00

MATCHLINE SHEET 16  
 STA. 19+15.00

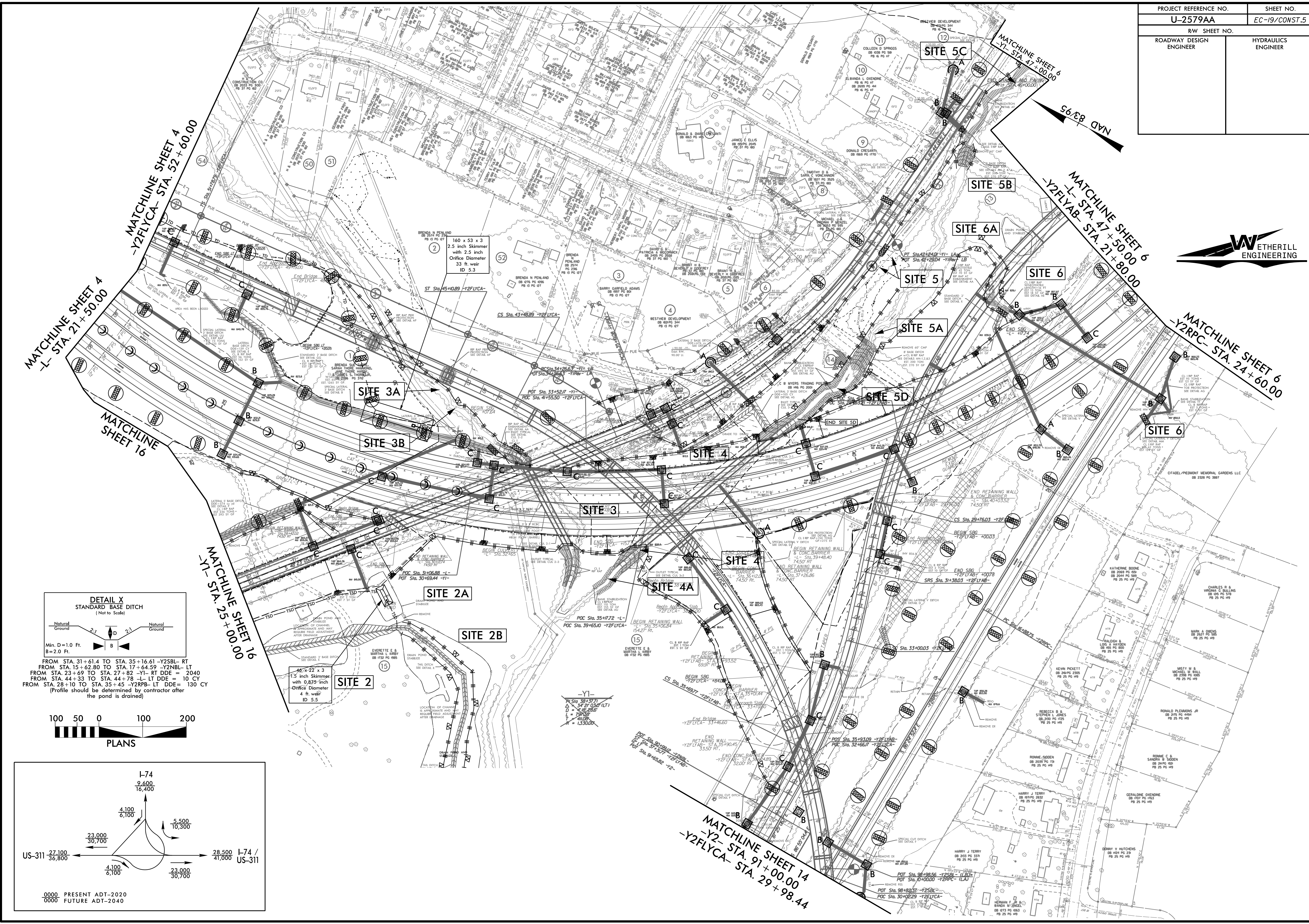
**B**

8/17/99  
 5/21/2022  
 U-2579AA\_EC\_FINAL\_psh\_04.dgn

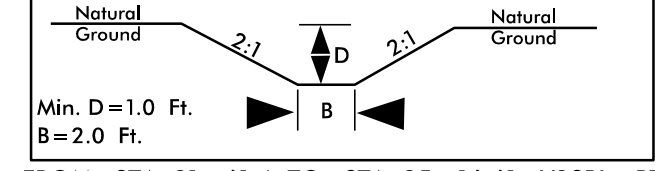
PROJECT REFERENCE NO.	SHEET NO.
U-2579AA	EC-19/CONST.5
RW SHEET NO.	
ROADWAY DESIGN ENGINEER	HYDRAULICS ENGINEER



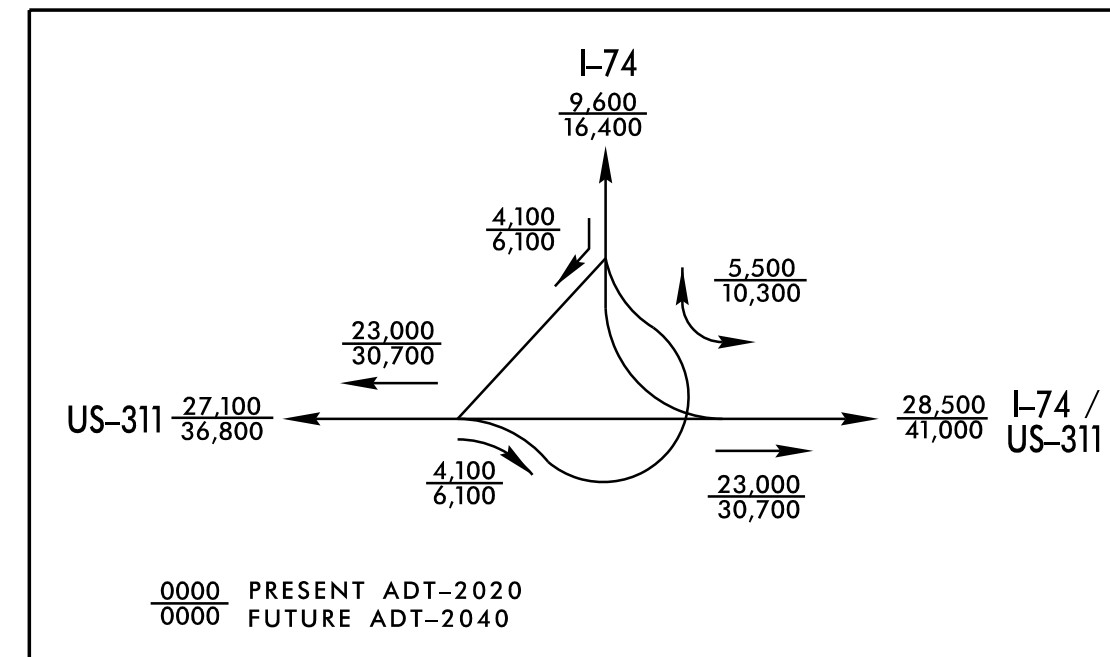
REVISIONS



**DETAIL X**  
STANDARD BASE DITCH  
(Not to Scale)



FROM STA. 31+61.4 TO STA. 35+16.61 -Y2SBL- RT  
 FROM STA. 15+62.80 TO STA. 17+64.59 -Y2NBL- LT  
 FROM STA. 23+69 TO STA. 27+82 -Y1- RT DDE = 2040  
 FROM STA. 44+33 TO STA. 44+78 -L- LT DDE = 10 CY  
 FROM STA. 28+10 TO STA. 35+45 -Y2RPB- LT DDE = 130 CY  
 (Profile should be determined by contractor after the pond is drained)



5/25/2022  
 U-2579AA\_EC\_FINAL\_psh\_05.dgn  
 8/17/99

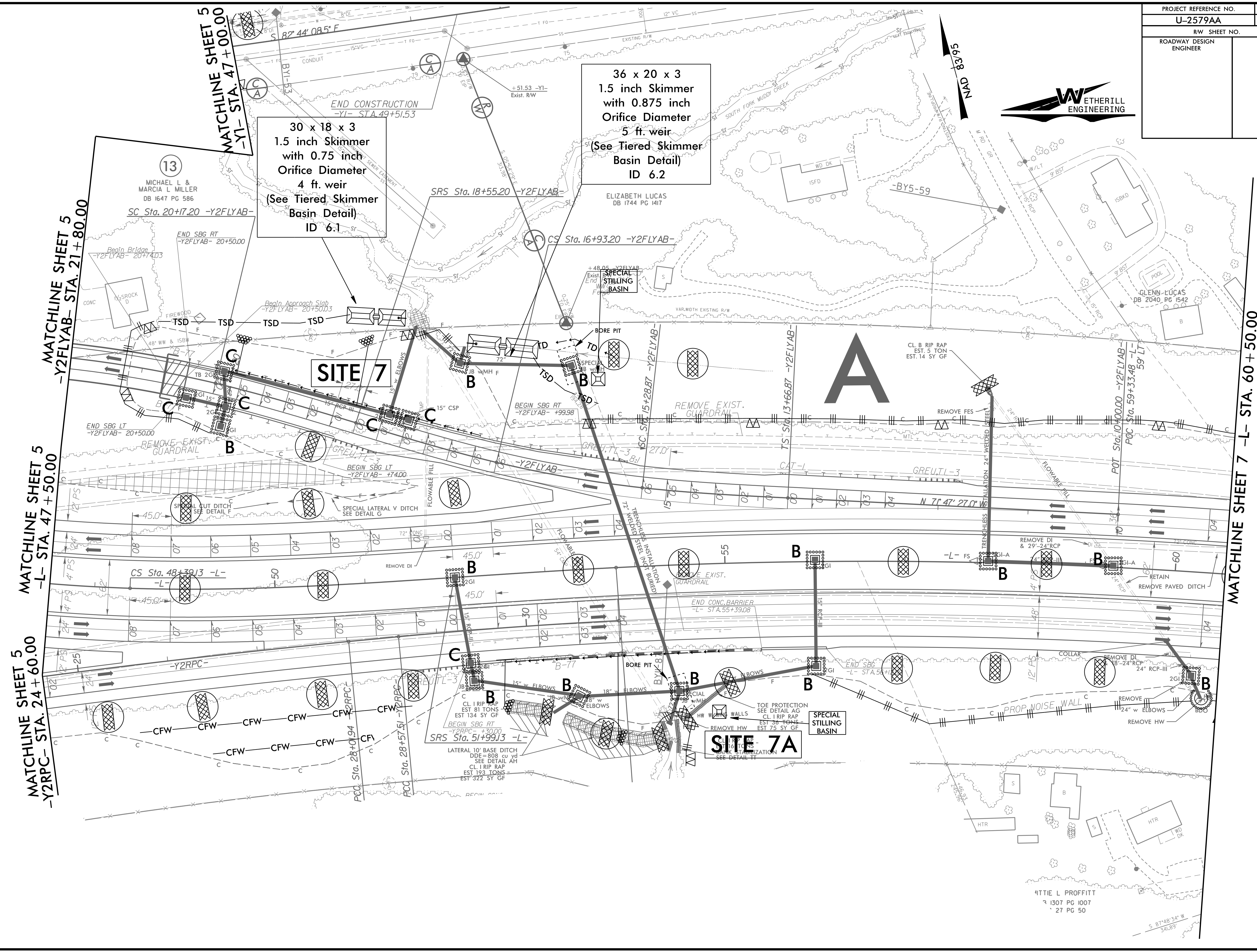
PROJECT REFERENCE NO.	SHEET NO.
U-2579AA	EC-20/CONST.6
RW SHEET NO.	
ROADWAY DESIGN ENGINEER	HYDRAULICS ENGINEER



NAD 83/95

30 x 18 x 3  
1.5 inch Skimmer  
with 0.75 inch  
Orifice Diameter  
4 ft. weir  
(See Tiered Skimmer  
Basin Detail)  
ID 6.1

36 x 20 x 3  
1.5 inch Skimmer  
with 0.875 inch  
Orifice Diameter  
5 ft. weir  
(See Tiered Skimmer  
Basin Detail)  
ID 6.2



MATCHLINE SHEET 5  
-Y2FLYAB- STA. 21+80.00

MATCHLINE SHEET 5  
-L- STA. 47+50.00

MATCHLINE SHEET 5  
-Y2RPC- STA. 24+60.00

MATCHLINE SHEET 7 -L- STA. 60+50.00

REVISIONS

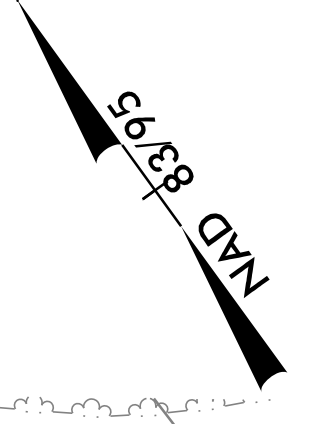
8/17/99

5/25/2022  
U-2579AA\_EC\_FINAL\_psh\_06.dgn

HITTIE L PROFFITT  
31507 PG 1007  
27 PG 50



PROJECT REFERENCE NO.	SHEET NO.
U-2579AA	EC-22/CONST.8
RW SHEET NO.	
ROADWAY DESIGN ENGINEER	HYDRAULICS ENGINEER



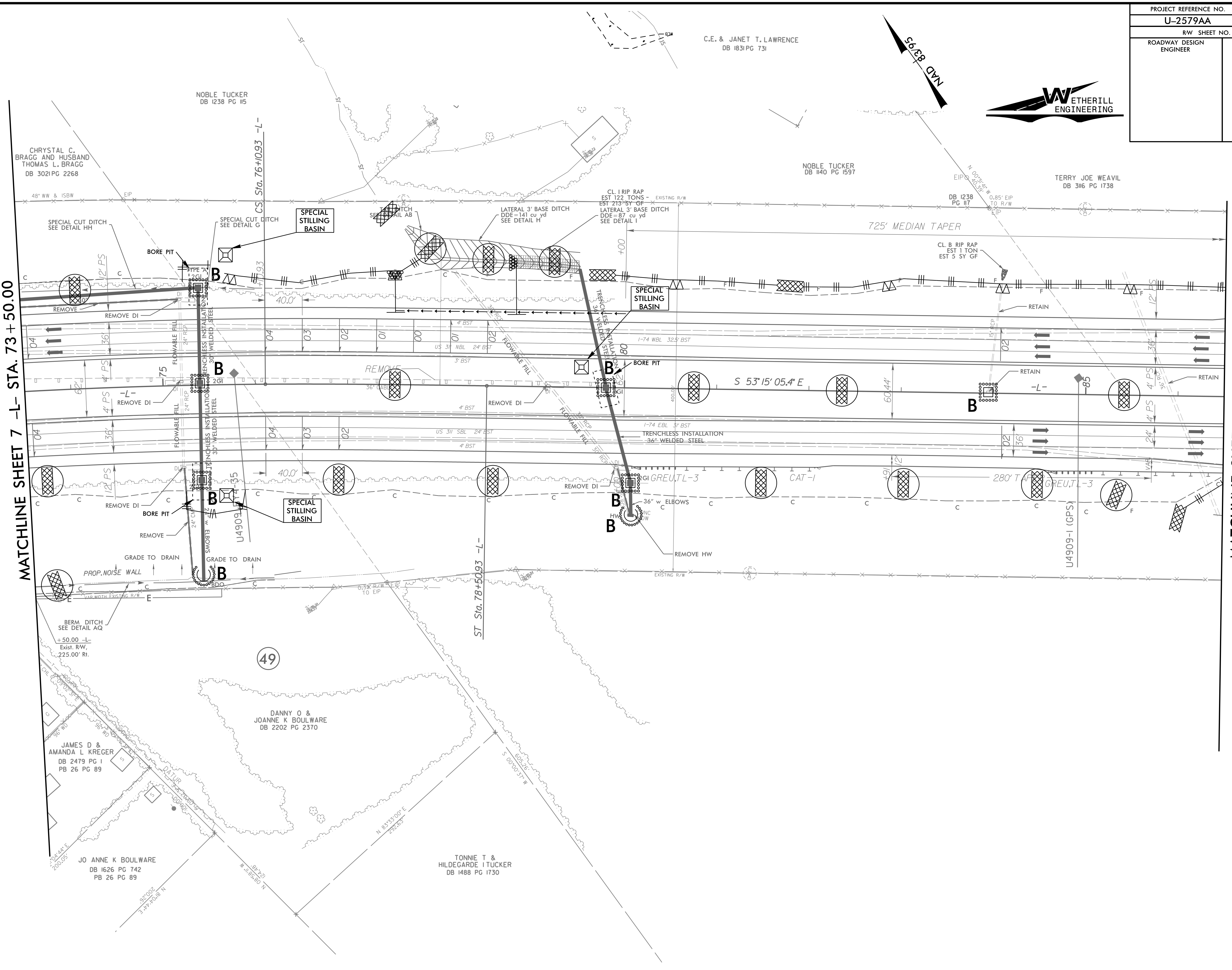
C.E. & JANET T. LAWRENCE  
DB 1831 PG 731

NOBLE TUCKER  
DB 1140 PG 1597

TERRY JOE WEAVIL  
DB 3116 PG 1738

MATCHLINE SHEET 7 -L- STA. 73 + 50.00

MATCHLINE SHEET 9 -L- STA. 86 + 50.00



CHRYSAL C. BRAGG AND HUSBAND THOMAS L. BRAGG  
DB 3021 PG 2268

NOBLE TUCKER  
DB 1238 PG 115

JAMES D & AMANDA L KREGGER  
DB 2479 PG 1  
PB 26 PG 89

JO ANNE K BOULWARE  
DB 1626 PG 742  
PB 26 PG 89

DANNY O & JOANNE K BOULWARE  
DB 2202 PG 2370

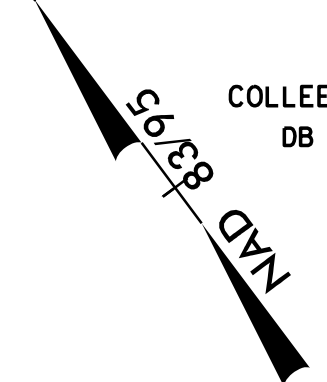
TONNIE T & HILDEGARDE I TUCKER  
DB 1488 PG 1730

8/17/99

5/25/2022  
U-2579AA\_EC.FINAL\_psh\_08.dgn  
ETHERILL ENGINEERING



PROJECT REFERENCE NO.	SHEET NO.
U-2579AA	EC-23/CONST.9
RW SHEET NO.	
ROADWAY DESIGN ENGINEER	HYDRAULICS ENGINEER



COLLEEN M. PARRISH  
DB 823 PG 104

NUMIE C. PARRISH  
DB PG



RALPH G. HAYES  
DB 849 PG 464

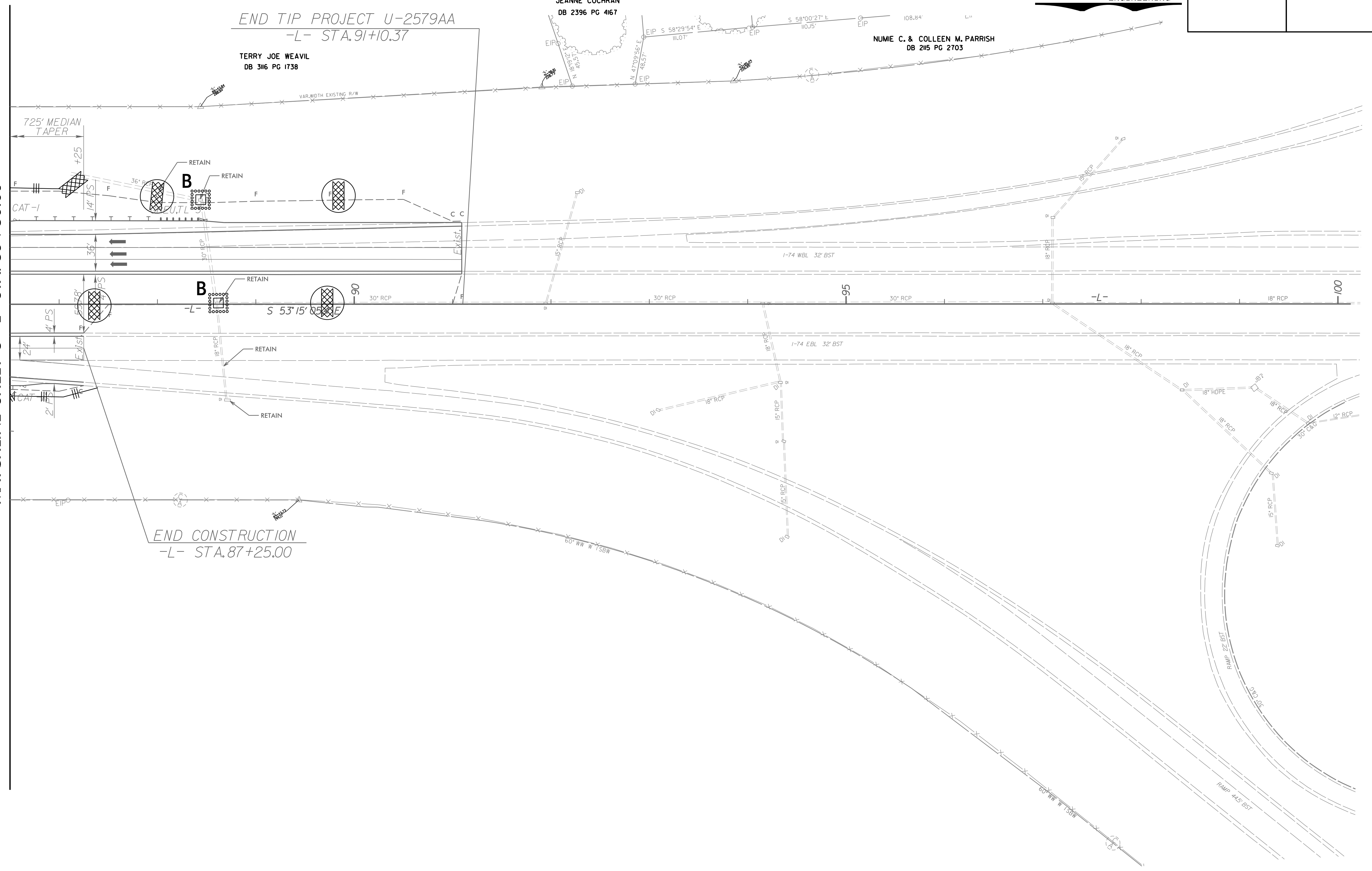
JEANNE COCHRAN  
DB 2396 PG 4167

NUMIE C. & COLLEEN M. PARRISH  
DB 215 PG 2703

END TIP PROJECT U-2579AA  
-L- STA. 91+10.37

TERRY JOE WEAVER  
DB 316 PG 1738

MATCHLINE SHEET 8 -L- STA. 86+50.00

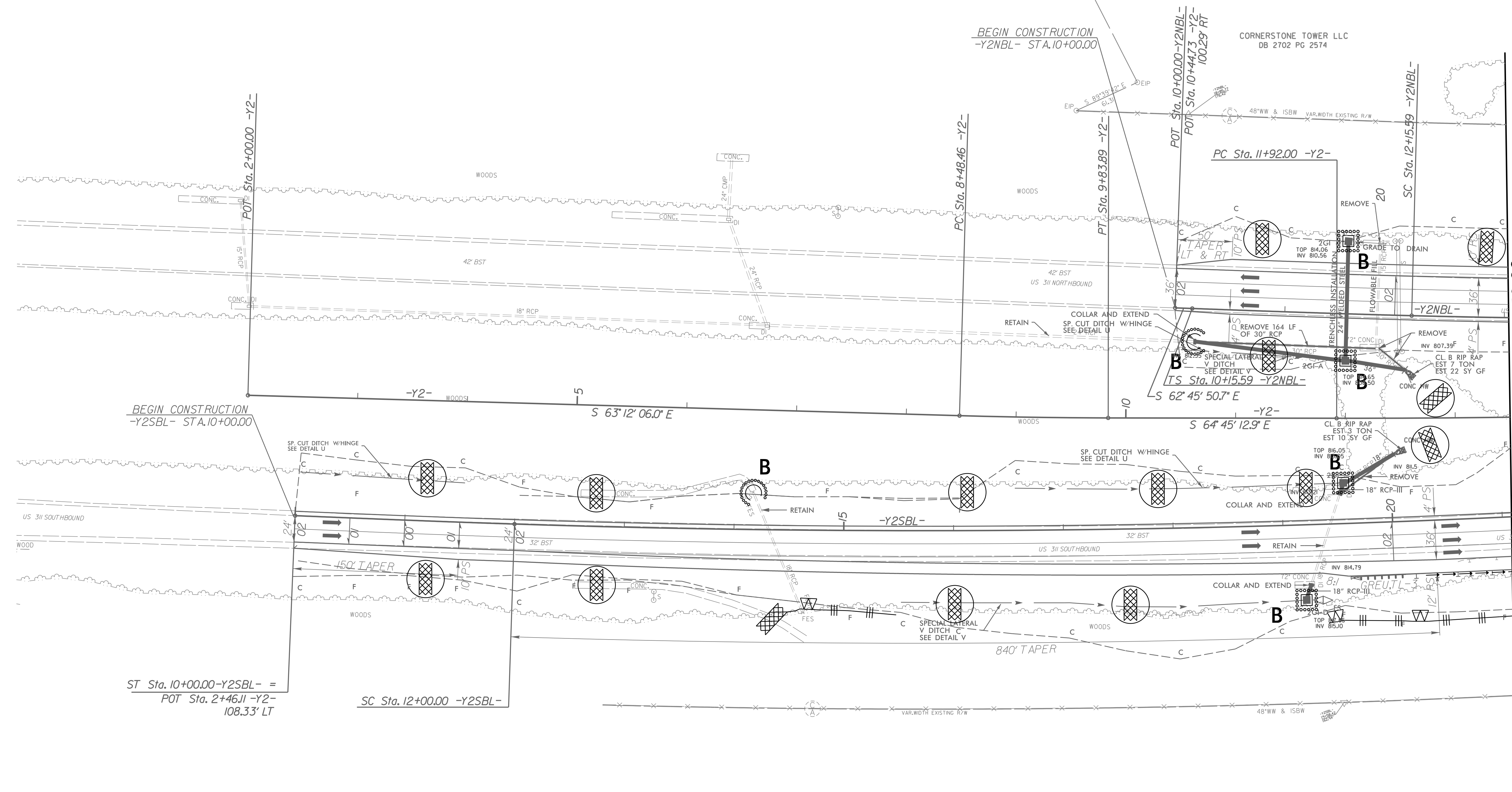
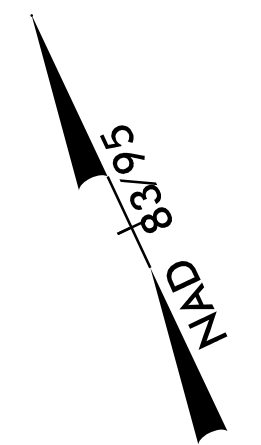


REVISIONS

8/17/99

5/25/2022  
I:\2579AA\_EC\_FINAL\_psh\_09.dgn  
11:54:11 AM

PROJECT REFERENCE NO.	SHEET NO.
U-2579AA	EC-24/CONST.10
RW SHEET NO.	
ROADWAY DESIGN ENGINEER	HYDRAULICS ENGINEER



MATCHLINE SHEET 11 -Y2- STA. 13 + 50.00

BEGIN CONSTRUCTION  
-Y2SBL- STA. 10+00.00

BEGIN CONSTRUCTION  
-Y2NBL- STA. 10+00.00

ST Sta. 10+00.00 -Y2SBL- =  
POT Sta. 2+46.11 -Y2-  
108.33' LT

SC Sta. 12+00.00 -Y2SBL-

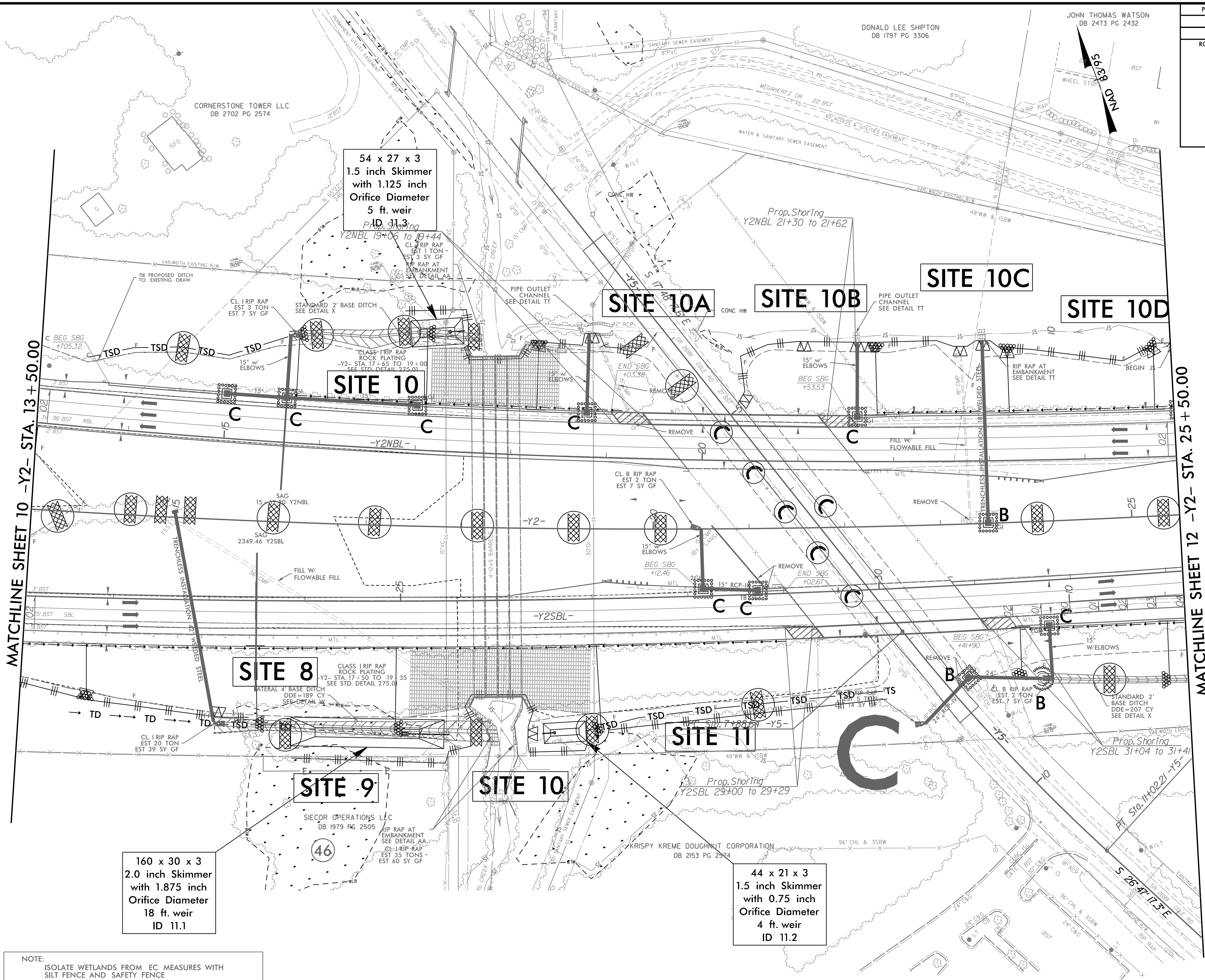
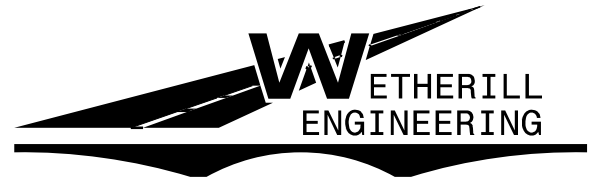
46

SIECOR OPERATIONS LLC  
DB 1979 PG 2505

8/17/99

5/25/2022  
U-2579AA\_EC\_FINAL\_psh\_10.dgn

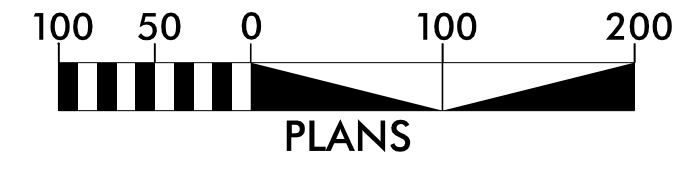
PROJECT REFERENCE NO.	SHEET NO.
U-2579AA	EC-25/CONST.II
RW SHEET NO.	
ROADWAY DESIGN ENGINEER	HYDRAULICS ENGINEER



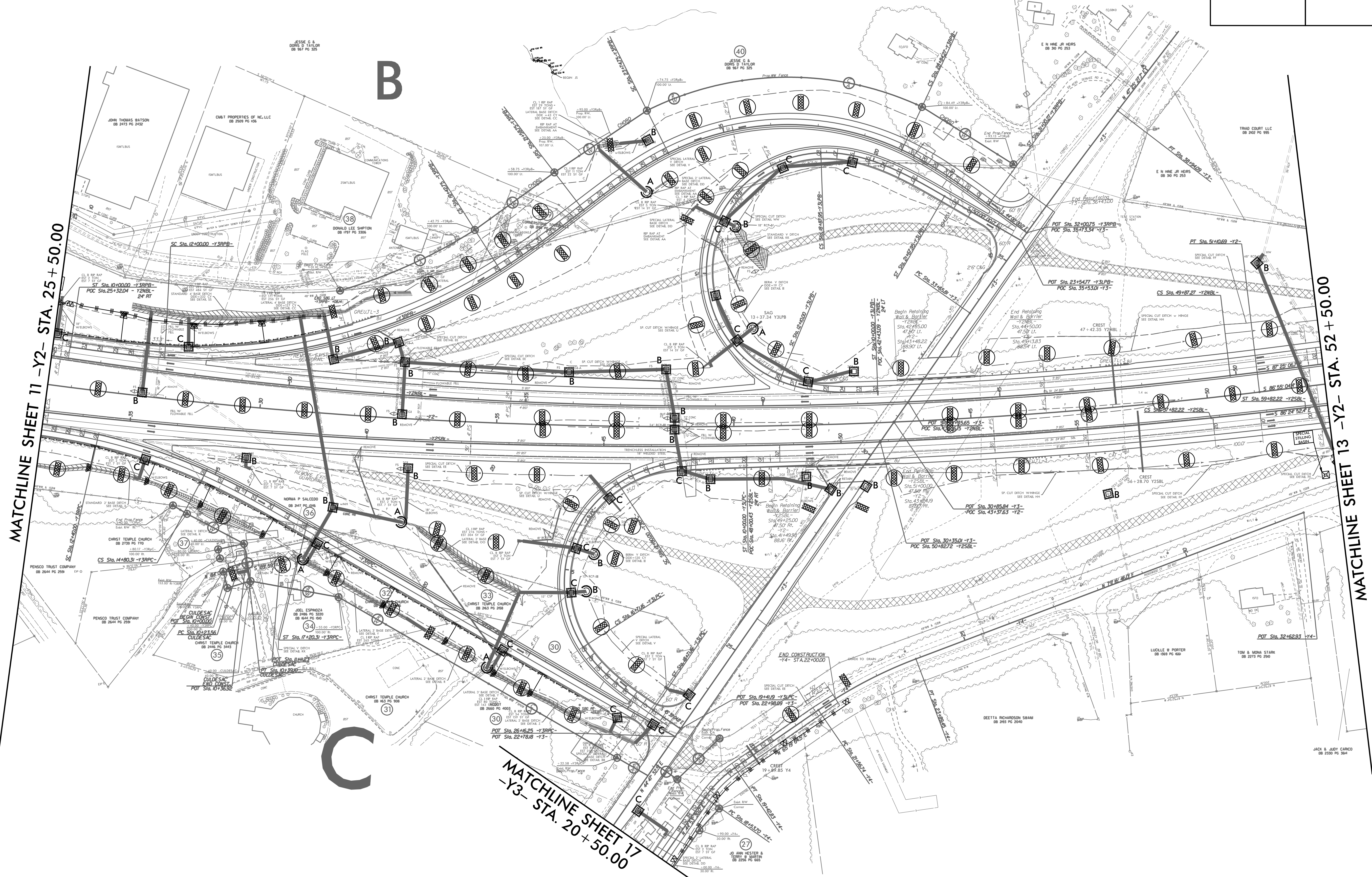
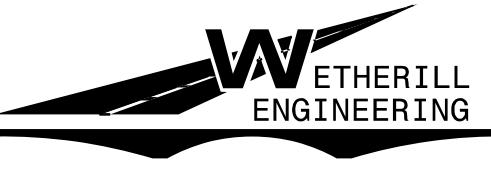
NOTE:  
ISOLATE WETLANDS FROM EC MEASURES WITH SILT FENCE AND SAFETY FENCE

8/17/99  
 5/25/2022  
 U-2579AA\_EC\_FINAL\_psh\_11.dgn

PROJECT REFERENCE NO.	SHEET NO.
U-2579AA	EC-26/CONST.12
RW SHEET NO.	
ROADWAY DESIGN ENGINEER	HYDRAULICS ENGINEER



NAD 83 95



MATCHLINE SHEET 11 -Y2- STA. 25+50.00

MATCHLINE SHEET 13 -Y2- STA. 52+50.00

MATCHLINE SHEET 17 -Y3- STA. 20+50.00

REVISIONS

8/17/99

5/25/2022  
U-2579AA\_EC.FINAL\_psh\_12.dgn  
11:54:11 AM

JACK & JUDY CARRO  
DB 250 PG 504

PROJECT REFERENCE NO.	SHEET NO.
U-2579AA	EC-27/CONST.13
RW SHEET NO.	
ROADWAY DESIGN ENGINEER	HYDRAULICS ENGINEER



JEA ENTERPRISES LLC  
DB 1889 PG 3268

NAD 83/95

TRIAD COURT LLC  
DB 2102 PG 995

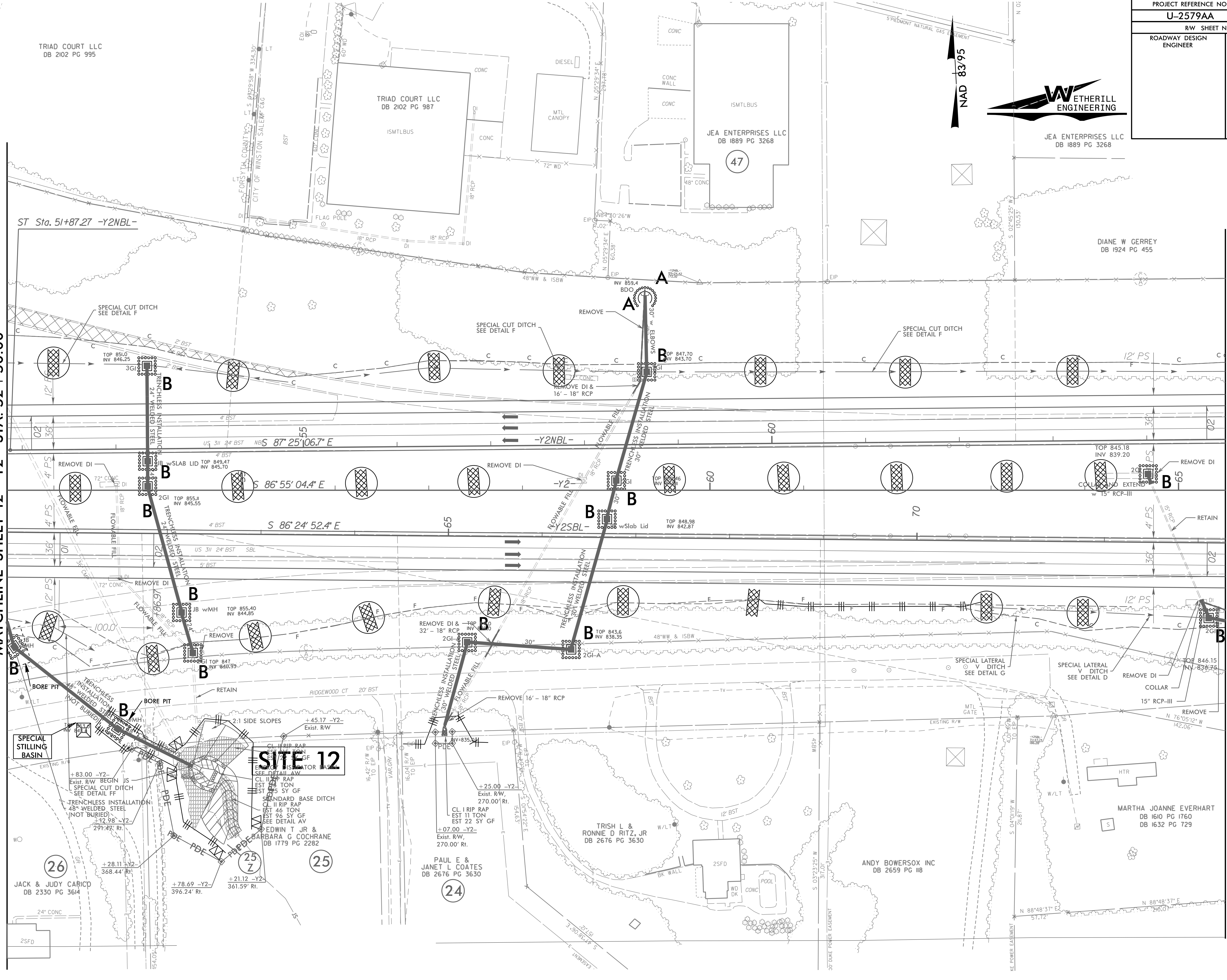
TRIAD COURT LLC  
DB 2102 PG 987

JEA ENTERPRISES LLC  
DB 1889 PG 3268

DIANE W GERREY  
DB 1924 PG 455

MATCHLINE SHEET 12 -Y2- STA. 52 +50.00

MATCHLINE SHEET 14 -Y2- STA. 65 +50.00



**SITE 12**

26  
JACK & JUDY CARICO  
DB 2330 PG 3614

27  
+28.11 -Y2-  
368.44' RI

28  
+78.69 -Y2-  
396.24' RI

29  
+21.12 -Y2-  
361.59' RI

25  
EDWIN T JR &  
BARBARA G COCHRANE  
DB 1779 PG 2282

24  
PAUL E &  
JANET L COATES  
DB 2676 PG 3630

23  
+25.00 -Y2-  
270.00' RI

22  
TRISH L &  
RONNIE D RITZ, JR  
DB 2676 PG 3630

21  
ANDY BOWERSOX INC  
DB 2659 PG 118

20  
MARTHA JOANNE EVERHART  
DB 1610 PG 1760  
DB 1632 PG 729

8/17/99

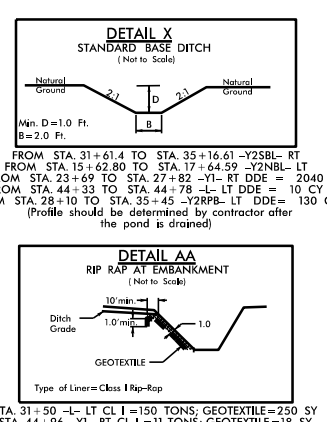
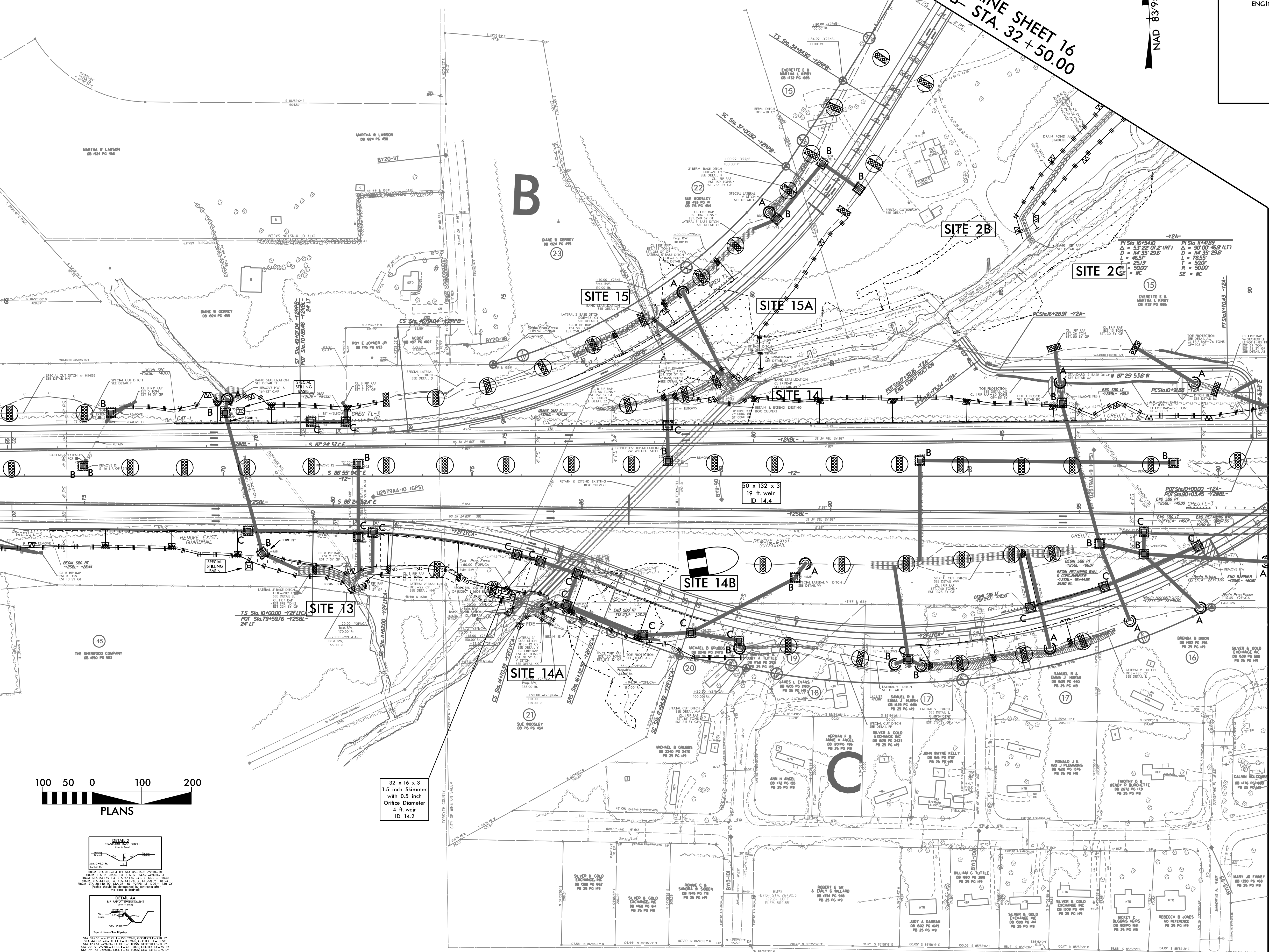
5/25/2022  
U-2579AA\_EC\_FINAL\_psh\_13.dgn

PROJECT REFERENCE NO.	SHEET NO.
U-2579AA	EC-28/CONST.14
RW SHEET NO.	
ROADWAY DESIGN ENGINEER	HYDRAULICS ENGINEER

MATCHLINE SHEET 13 -Y2- STA. 65 + 50.00

MATCHLINE SHEET 16 -Y2RPB- STA. 32 + 50.00

NAD 83/95



32 x 16 x 3  
1.5 inch Skimmer  
with 0.5 inch  
Orifice Diameter  
4 ft. weir  
ID 14.2

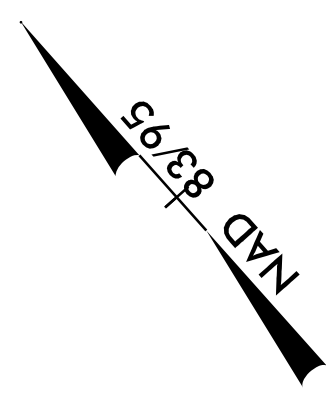
50 x 132 x 3  
19 ft. Weir  
ID 14.4

PC STA 11+40.00  
A = 3.52' OF 2' (RT)  
D = 14' 35" 29.6'  
L = 65.5'  
R = 500.0'  
SE = MC



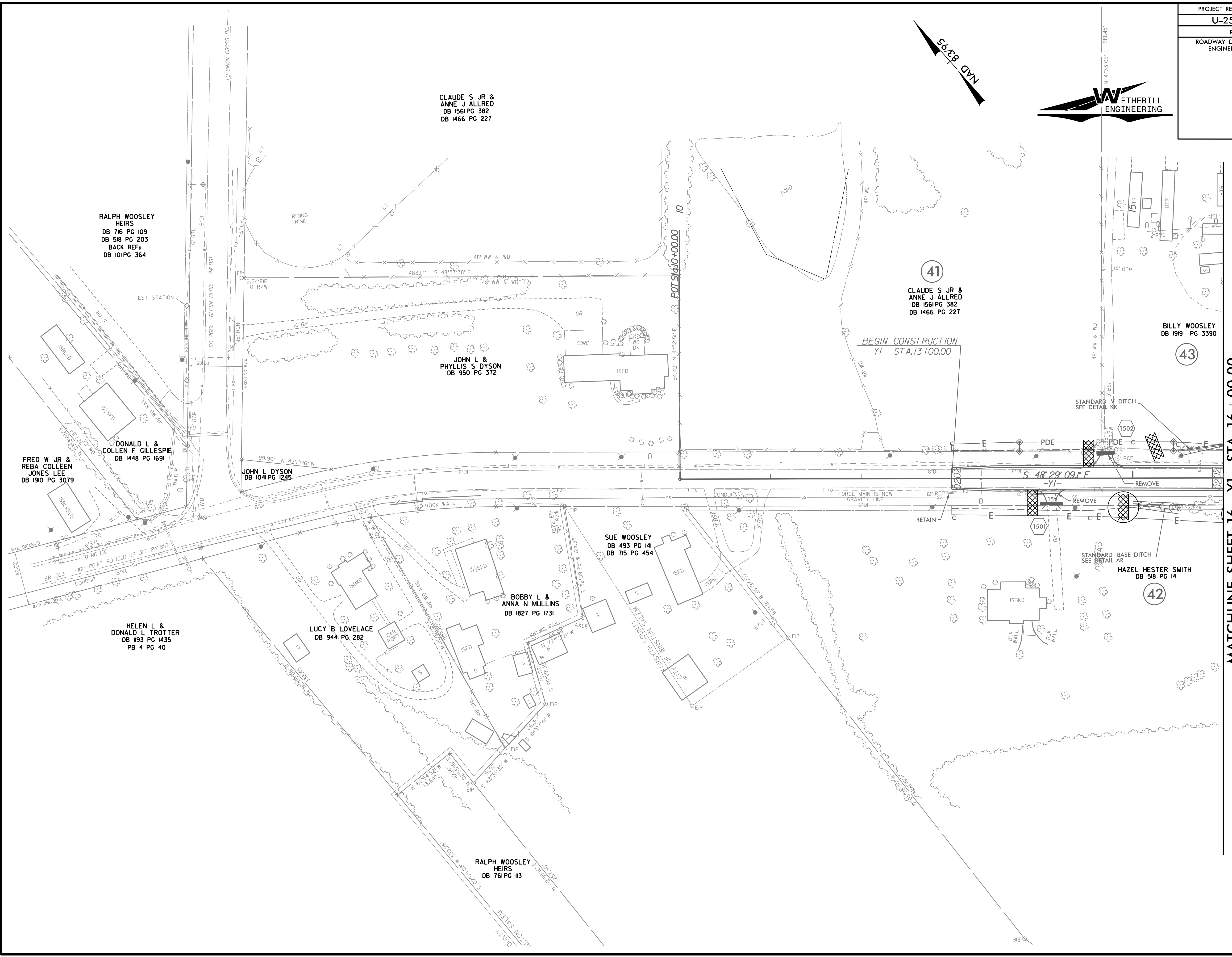
MATCHLINE SHEET 5  
-Y2- STA. 91 + 00.00  
-Y2FLYCA- STA. 29 + 98.44

PROJECT REFERENCE NO.	SHEET NO.
U-2579AA	EC-29/CONST.15
RW SHEET NO.	
ROADWAY DESIGN ENGINEER	HYDRAULICS ENGINEER



8/17/99

REVISIONS



**RALPH WOOSLEY HEIRS**  
DB 716 PG 109  
DB 518 PG 203  
BACK REF:  
DB 101 PG 364

**CLAUDE S JR & ANNE J ALLRED**  
DB 1561 PG 382  
DB 1466 PG 227

**41**  
**CLAUDE S JR & ANNE J ALLRED**  
DB 1561 PG 382  
DB 1466 PG 227

**JOHN L & PHYLLIS S DYSON**  
DB 950 PG 372

**BILLY WOOSLEY**  
DB 1919 PG 3390

**FRED W JR & REBA COLLEEN JONES LEE**  
DB 1910 PG 3079

**DONALD L & COLLEN F GILLESPIE**  
DB 1448 PG 1691

**JOHN L DYSON**  
DB 1041 PG 1245

**SUE WOOSLEY**  
DB 493 PG 141  
DB 715 PG 454

**BOBBY L & ANNA N MULLINS**  
DB 1827 PG 1731

**HAZEL HESTER SMITH**  
DB 518 PG 14

**HELEN L & DONALD L TROTTER**  
DB 1193 PG 1435  
PB 4 PG 40

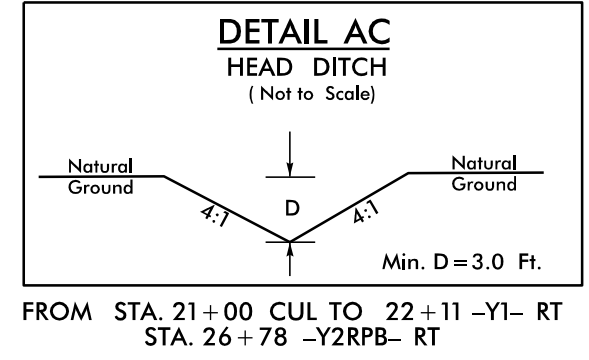
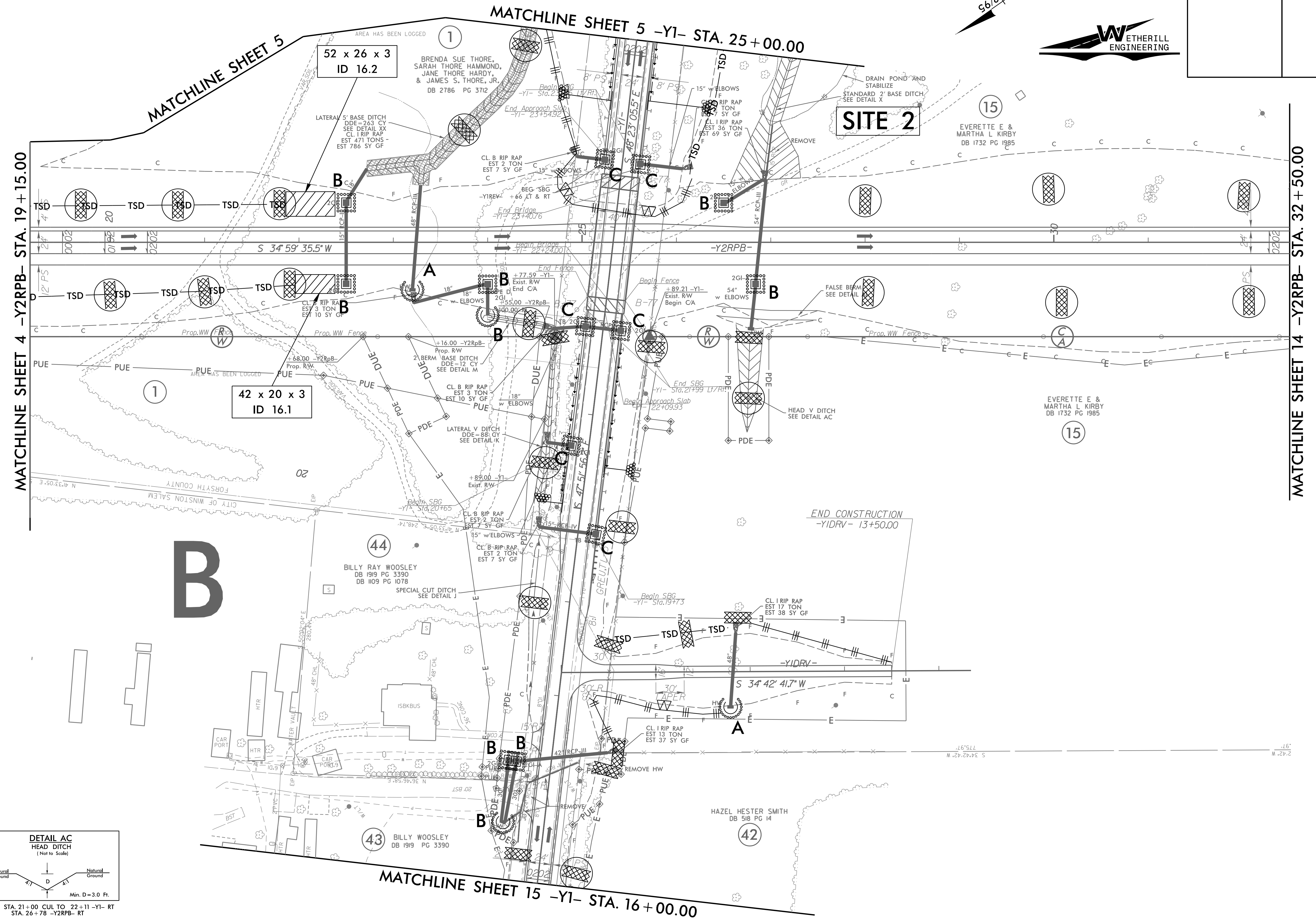
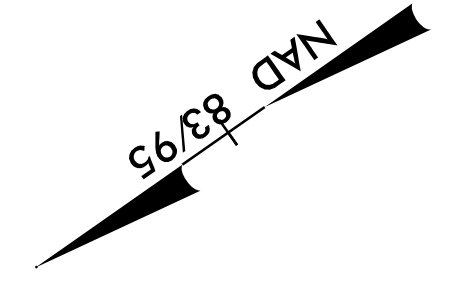
**LUCY B LOVELACE**  
DB 944 PG 282

**RALPH WOOSLEY HEIRS**  
DB 761 PG 113

5/25/2022  
U-2579AA\_EC\_FINAL\_psh\_15.dgn  
11:34:41 AM

MATCHLINE SHEET 16 -Y1- STA. 16+00.00

PROJECT REFERENCE NO.	SHEET NO.
U-2579AA	EC-30/CONST.16
RW SHEET NO.	
ROADWAY DESIGN ENGINEER	HYDRAULICS ENGINEER



8/17/99  
5/25/2022  
U-2579AA\_EC\_FINAL\_psh\_16.dgn  
11:54:41 AM









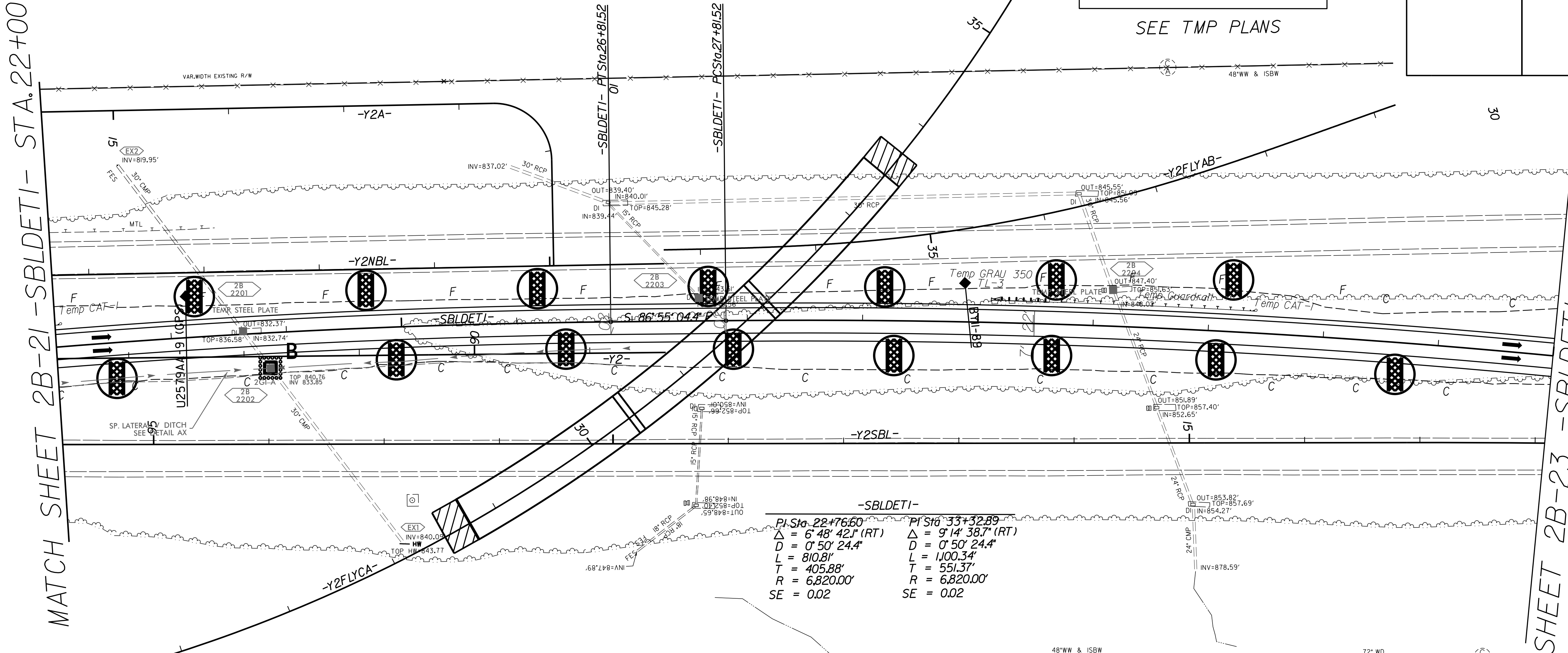
DETAIL FOR TEMPORARY  
DETOUR -SBLDETI-  
SEE TMP PLANS

PROJECT REFERENCE NO. U-2579AA	SHEET NO. EC-33/CONST.2B-9
RW SHEET NO.	
ROADWAY DESIGN ENGINEER	HYDRAULICS ENGINEER

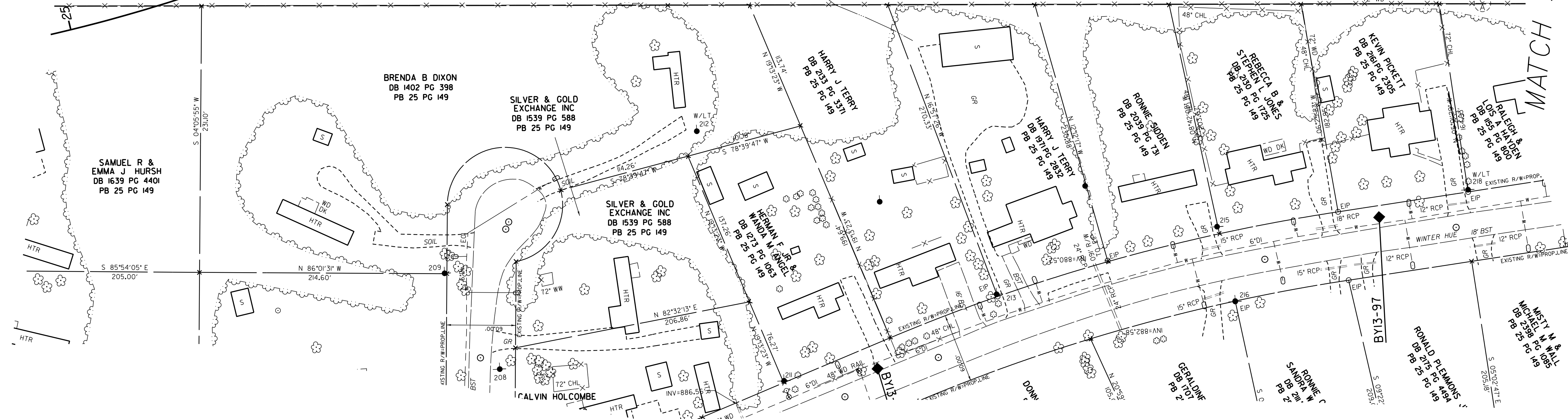
MATCH SHEET 2B-21 -SBLDETI- STA.22+00

MATCH SHEET 2B-23 -SBLDETI- STA.35+00

NAD 83/95



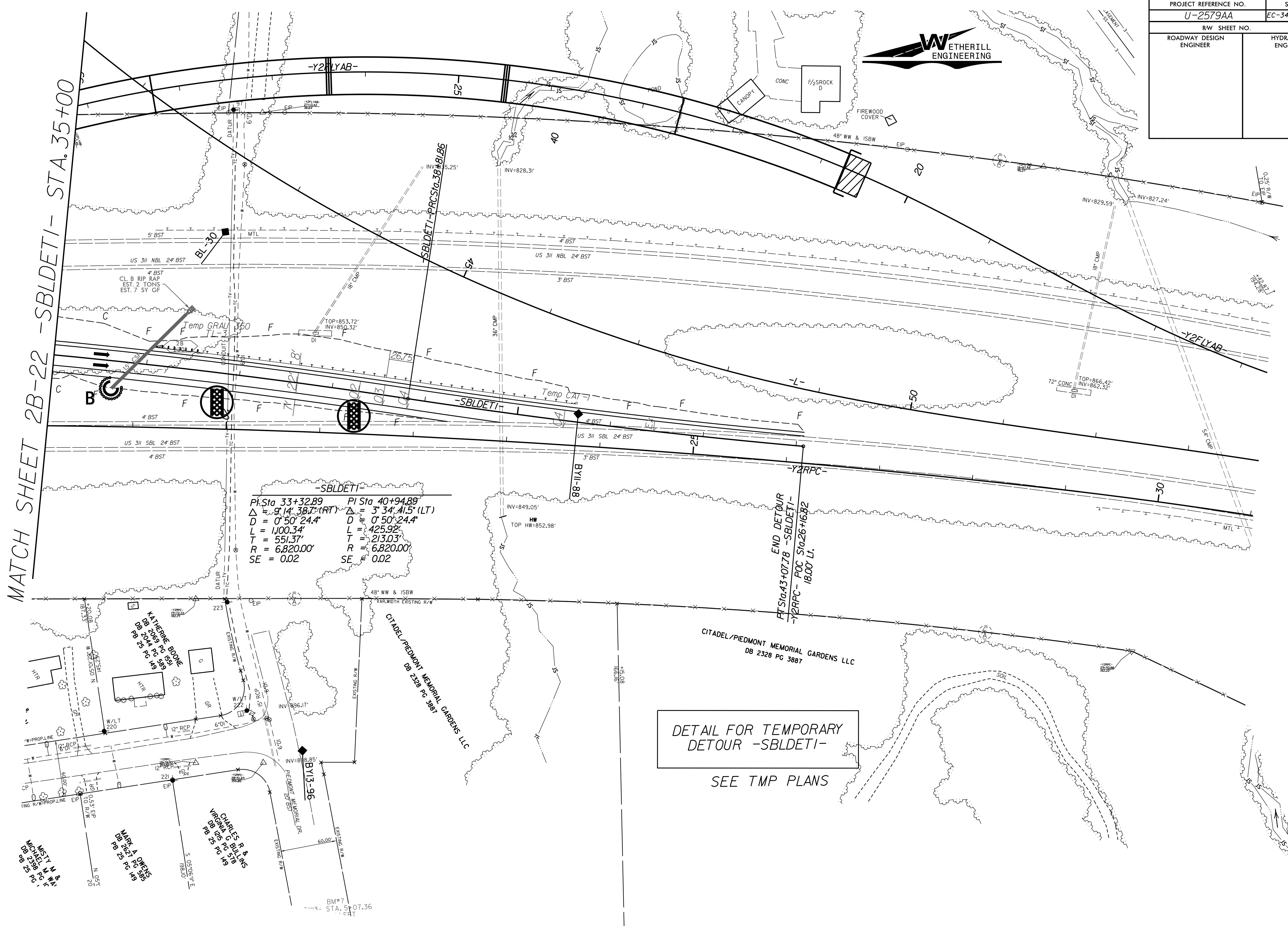
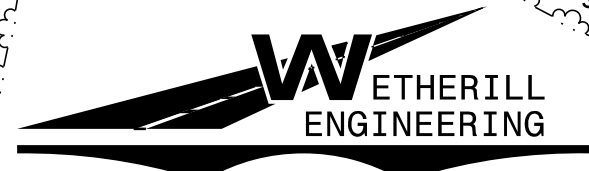
-SBLDETI-	
PI Sta. 22+76.60	PI Sta. 33+32.89
$\Delta = 6' 48' 42.1''$ (RT)	$\Delta = 9' 14' 38.7''$ (RT)
$D = 0' 50' 24.4''$	$D = 0' 50' 24.4''$
$L = 810.81'$	$L = 1100.34'$
$T = 405.88'$	$T = 551.37'$
$R = 6,820.00'$	$R = 6,820.00'$
$SE = 0.02$	$SE = 0.02$



SEE SHEETS 42-43 FOR -SBLDETI- PROFILE

5/14/99  
5/25/2022 EC\_FINAL\_det\_2B-9.dgn

PROJECT REFERENCE NO.	SHEET NO.
U-2579AA	EC-34/CONST.2B-10
RW SHEET NO.	
ROADWAY DESIGN ENGINEER	HYDRAULICS ENGINEER



MATCH SHEET 2B-22 -SBLDETI- STA. 35+00

$PI\ Sta\ 33+32.89$      $PI\ Sta\ 40+94.89$   
 $\Delta = 91^{\circ}14'38.71\ RT$      $\Delta = 3^{\circ}34'41.5\ LT$   
 $D = 0^{\circ}50'24.4"$      $D = 0^{\circ}50'24.4"$   
 $L = 100.34'$      $L = 425.92'$   
 $T = 551.37'$      $T = 213.03'$   
 $R = 6,820.00'$      $R = 6,820.00'$   
 $SE = 0.02$      $SE = 0.02$

END DETOUR  
 $PI\ Sta\ 43+07.78$  -SBLDETI-  
 -Y2RPC- POC Sta 26+16.82  
 18,000 LT.

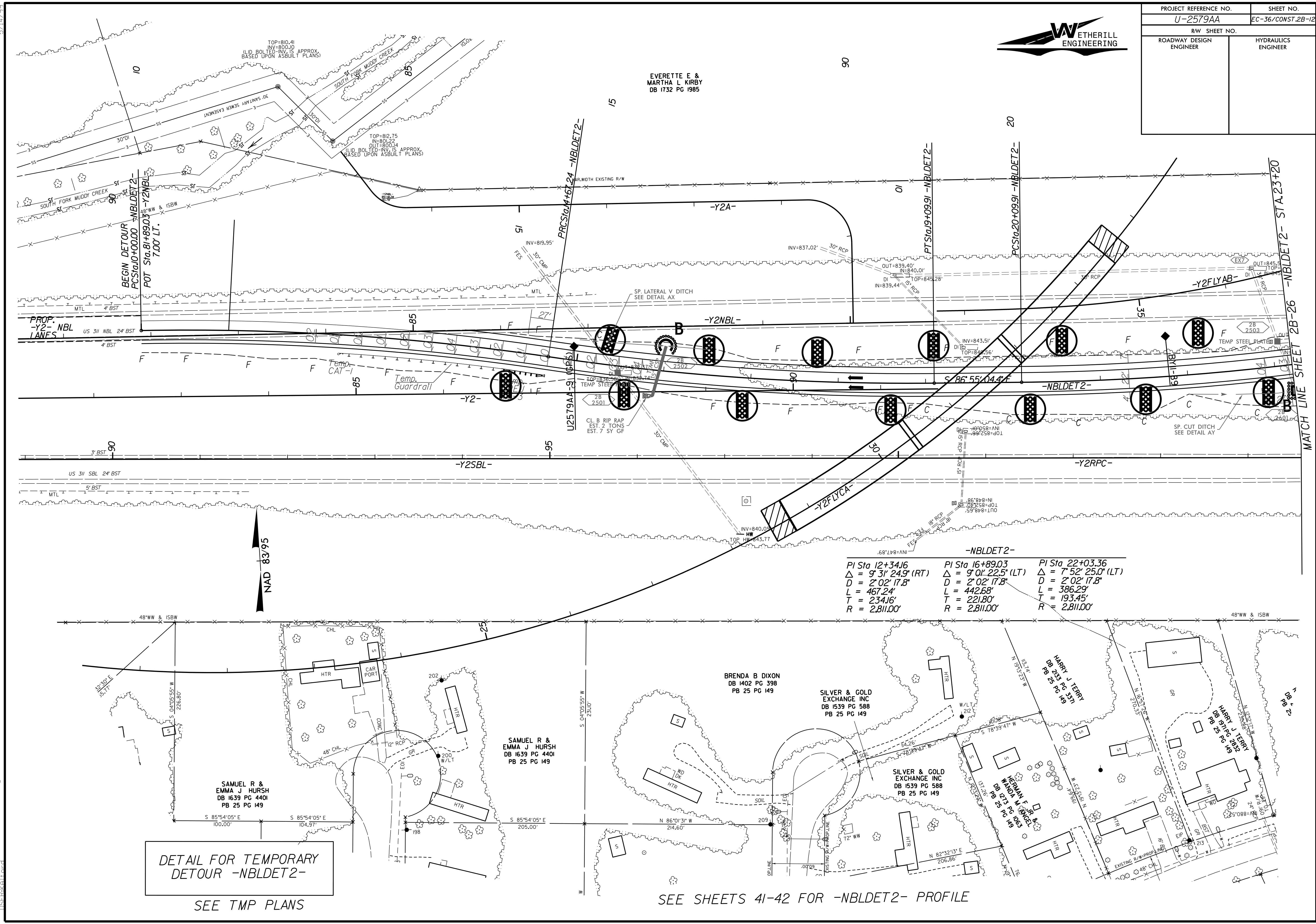
SEE SHEETS 42-43 FOR -SBLDETI- PROFILE

5/14/99  
5/25/02 EC.FINAL.det.2B-10.dgn





PROJECT REFERENCE NO.	SHEET NO.
U-2579AA	EC-36/CONST.2B-12
RW SHEET NO.	
ROADWAY DESIGN ENGINEER	HYDRAULICS ENGINEER



-NBLDET2-		
PI Sta 12+34.16	PI Sta 16+89.03	PI Sta 22+03.36
$\Delta = 9^{\circ} 31' 24.9''$ (RT)	$\Delta = 9^{\circ} 01' 22.5''$ (LT)	$\Delta = 7^{\circ} 52' 25.0''$ (LT)
D = 2' 02' 17.8"	D = 2' 02' 17.8"	D = 2' 02' 17.8"
L = 467.24'	L = 442.68'	L = 386.29'
T = 234.16'	T = 221.80'	T = 193.45'
R = 2,811.00'	R = 2,811.00'	R = 2,811.00'

DETAIL FOR TEMPORARY  
DETOUR -NBLDET2-  
SEE TMP PLANS

SEE SHEETS 41-42 FOR -NBLDET2- PROFILE

5/14/99  
5/25/02 EC.FINAL\_det\_2B-12.dgn

