



STATE OF NORTH CAROLINA
DEPARTMENT OF TRANSPORTATION

ROY COOPER
GOVERNOR

JAMES H. TROGDON, III
SECRETARY

February 9, 2018

MEMORANDUM TO: Tatia White
Central Project Delivery Team -- Divisions 11, 12, 13, & 14
Roadway Design Unit

FROM: Gordon Box, LG
GeoEnvironmental Project Manager
GeoEnvironmental Section
Geotechnical Engineering Unit

TIP NO: U-2579AA
WBS: 34839.1.7
COUNTY: Forsyth
DIVISION: 9
DESCRIPTION: Winston-Salem Northern Beltway Eastern Section (Future I-74) from US 311 to I-40 * See R-2247 For Planning Document *

SUBJECT: **Pre-Scoping Comments**

DocuSigned by:

0DA1A1D2E9DB479...

The GeoEnvironmental Section performed a records search of readily available information for the given project study area, approximated based upon the current design, to identify known and potential sites of concern. No sites of concern were identified within the project area. If the project limit changes, please let us know, so we can reevaluate a revised study area.

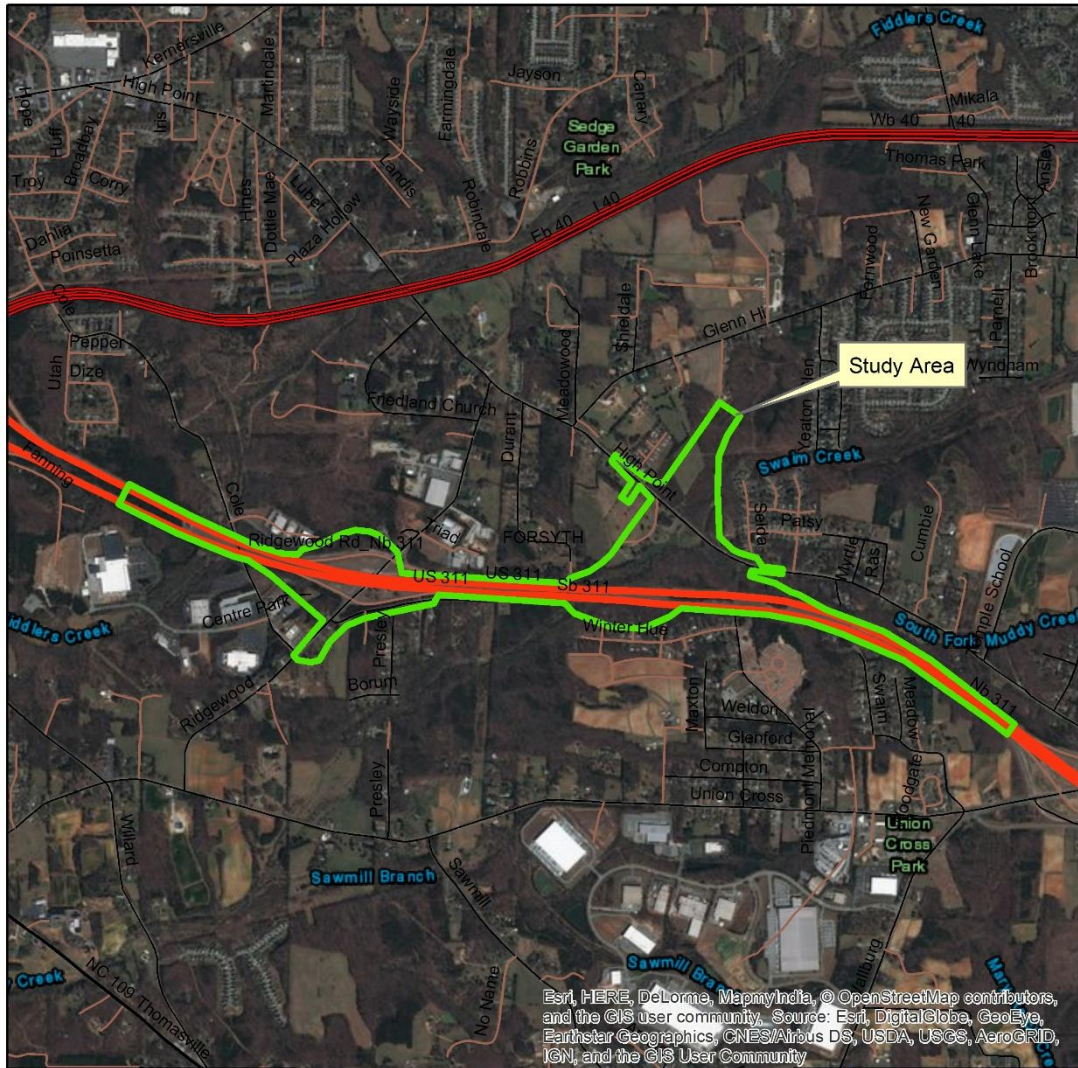
cc:
Laura Sutton, PE, Senior Project Manager Central Project Delivery Team Division 7, 9, & 10
John Pilipchuk, LG, PE, State Geotechnical Engineer
Stephen R. Morgan, PE, State Hydraulics Engineer
Andrew McDaniel, PE, Stormwater NPDES Permit Program - Engineering Supervisor
Brian Hanks, PE, State Structures Engineer
R. Joel Gulledge, PE, PLS, State Locations and Surveys Central Office Administrative Engineer
Carl Barclay, PE, State Utilities Manager
Wright R. Archer, III, PE, Division Construction Engineer
Rodney K Hatton, Division Right of Way Agent
Eric, Williams, PE, Geotechnical Regional Manager
Kevin Miller, PG, Regional Geological Engineer
Steve Grimes, ROW Unit, Negotiations, State Negotiator
row-notify@ncdot.gov
roadwaydesign@ncdot.gov
File

Mailing Address:
NC DEPARTMENT OF TRANSPORTATION
GEOTECHNICAL ENGINEERING UNIT
1589 MAIL SERVICE CENTER
RALEIGH NC 27699-1589





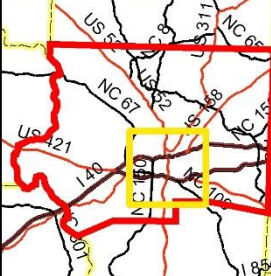
Telephone: 919-707-6850
Fax: 919-250-4237
Customer Service: 1-877-368-4968
Website: www.ncdot.gov

Location:
CENTURY CENTER COMPLEX
ENTRANCE B-2
1020 BIRCH RIDGE DRIVE
RALEIGH NC

Appendix A
Location of GeoEnvironmental Sites of Concern



Esri, HERE, DeLorme, MapmyIndia, © OpenStreetMap contributors, and the GIS user community. Source: Esri, DigitalGlobe, GeoEye, Earthstar Geographics, CNES/Airbus DS, USDA, USGS, AeroGRID, IGN, and the GIS User Community

	<p>Project 34839.1.7 (TIP # U-2579AA) Winston-Salem Northern Beltway Eastern Section (Future I-74) from US 311 to I-40 Forsyth County</p> <p>2,900 1,450 0 2,900 Feet</p>  <p></p> <p> NC Department of Transportation Geotechnical Engineering Unit GeoEnvironmental Section</p>	
---	---	---