

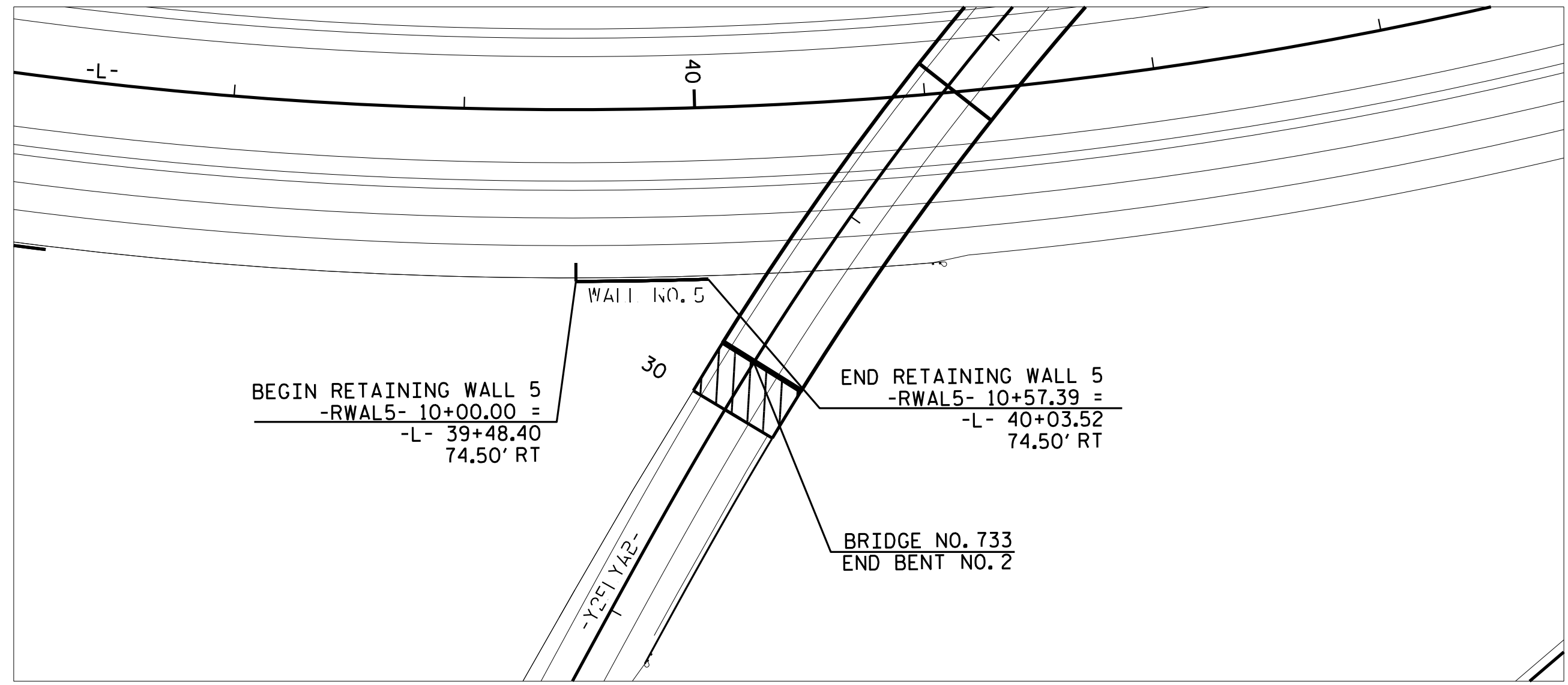
GEOTECHNICAL ENGINEER

ENGINEER

DocuSigned by: *Michael H. Stephens* 06/01/2022

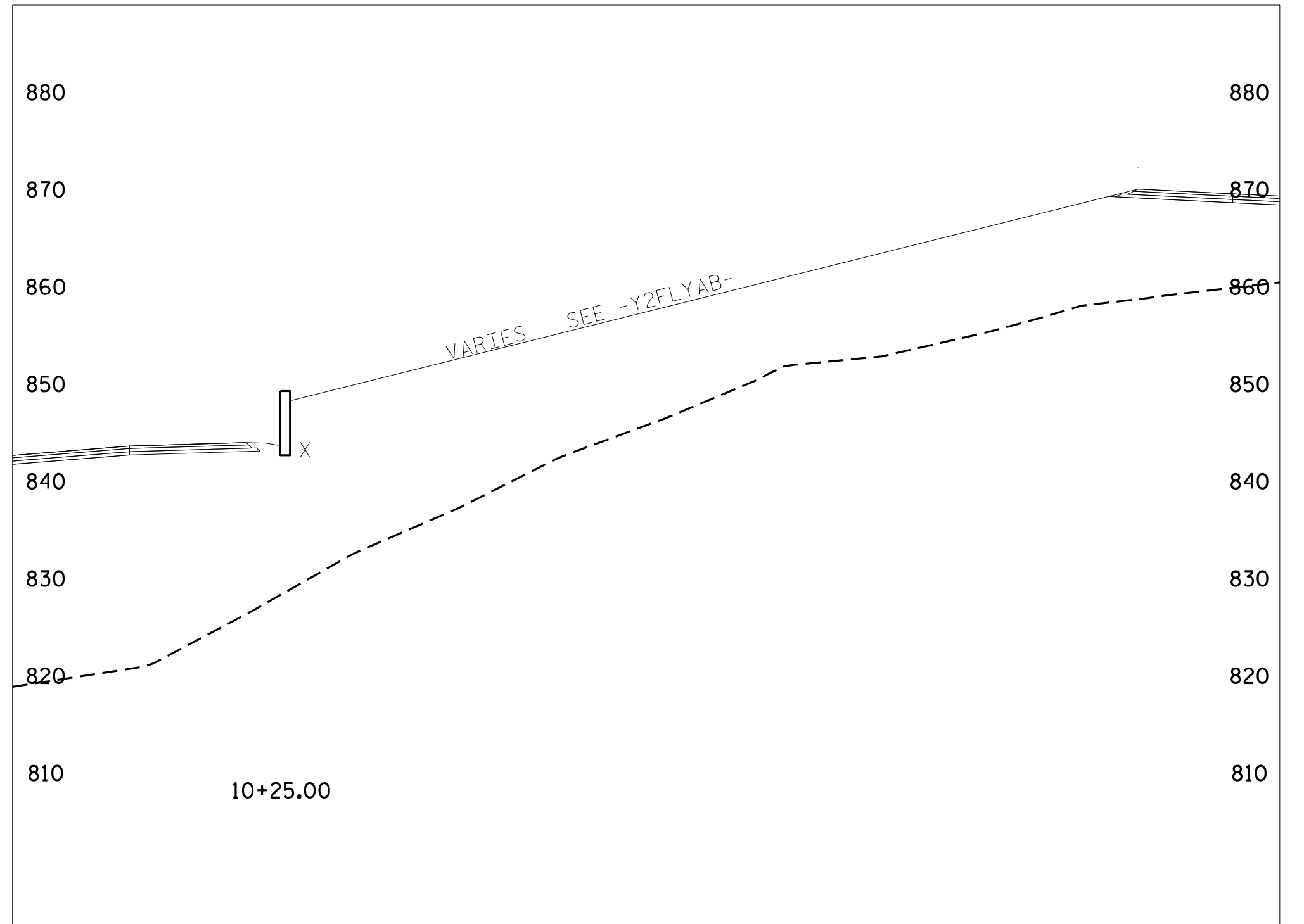
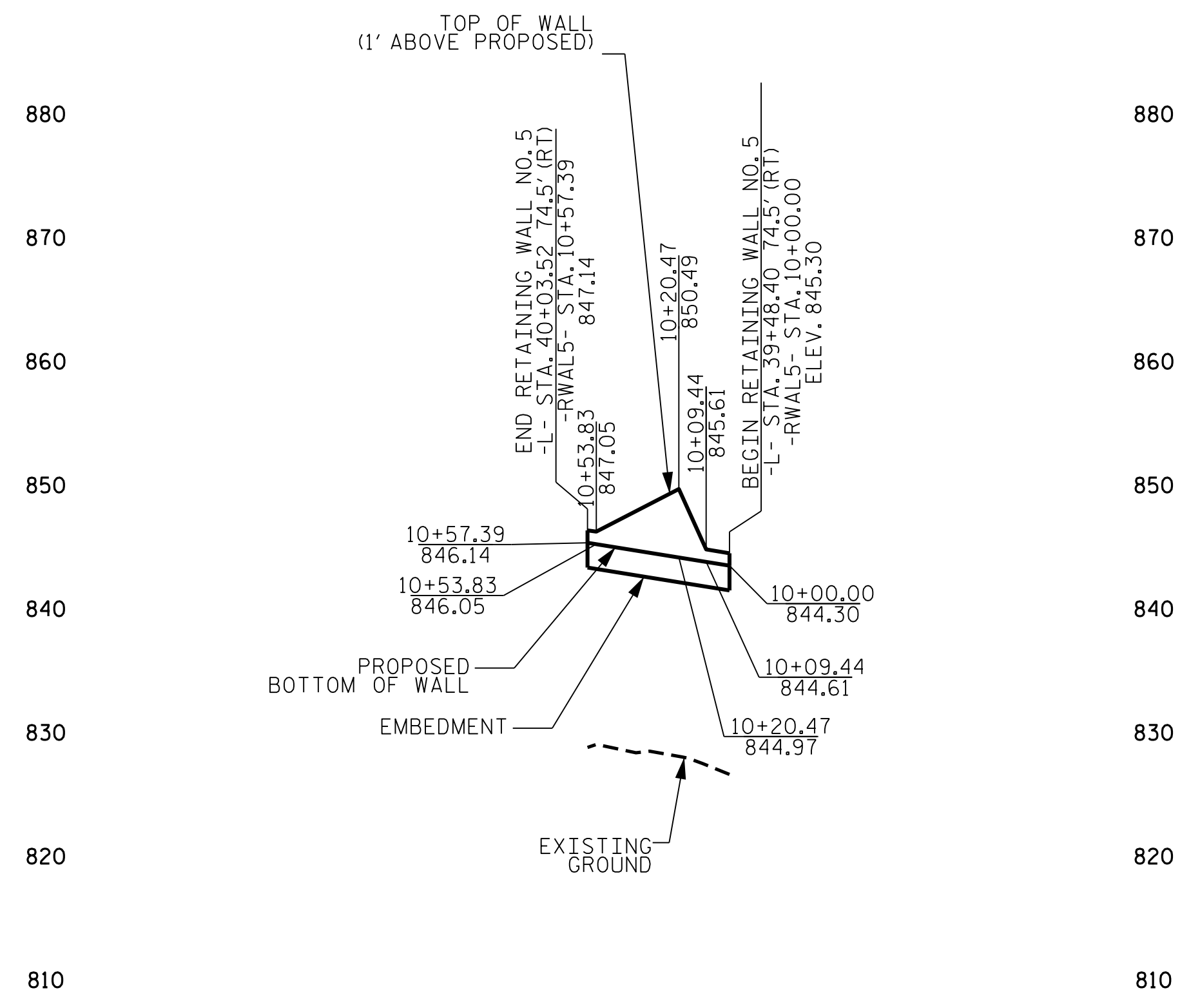
110631503C2046C SIGNATURE DATE SIGNATURE DATE

**DOCUMENT NOT CONSIDERED FINAL
UNLESS ALL SIGNATURES COMPLETED**



ESTIMATED MSE WALL QUANTITIES (SQUARE FEET)	
MSE RETAINING WALL NO. 5	275 SF

NOTES:
 1) WALL AREA INCLUDES EMBEDMENT
 2) FOR EMBEDMENT DEPTHS, SEE WALL EMBEDMENT TABLE



PROJECT NO.: 34839.1.1 (U-2579AA)
 FORSYTH COUNTY
 STATION: -L- STA. 39+48.40
 SHEET 5 OF 12 WALL NO. 5

**NORTH CAROLINA
DEPARTMENT OF TRANSPORTATION
DIVISION OF HIGHWAYS**

**GEOTECHNICAL
ENGINEERING UNIT**

REVISIONS					
NO.	BY	DATE	NO.	BY	DATE
1			3		
2			4		

SHEET NO. WV-5

PREPARED BY: MHS DATE: 6/1/22
 REVIEWED BY: SCC DATE: 6/1/22