

GEOTECHNICAL ENGINEER

ENGINEER

NORTH CAROLINA
 PROFESSIONAL ENGINEER
 SEAL
 028893
 MICHAEL H. STEPHENS

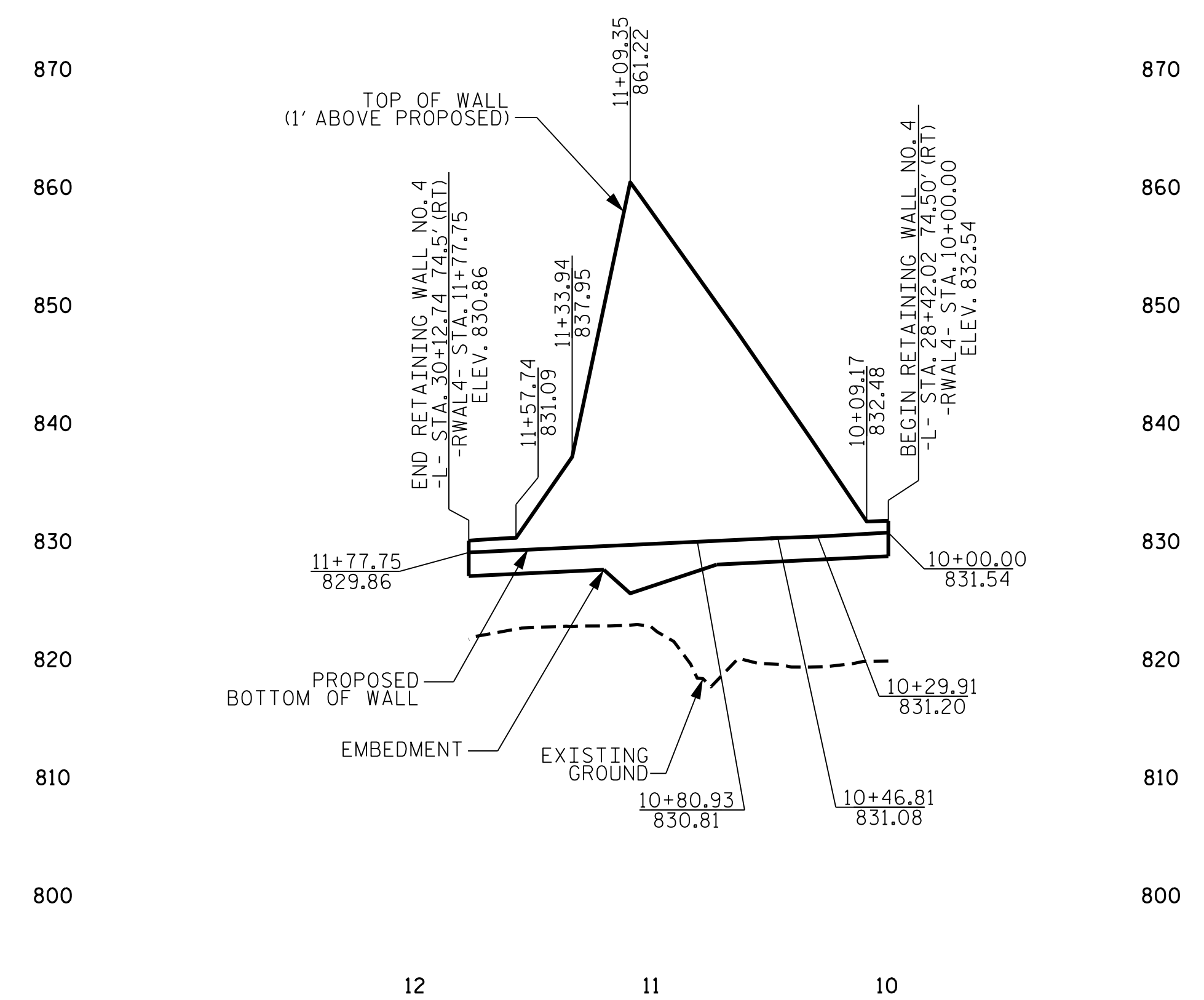
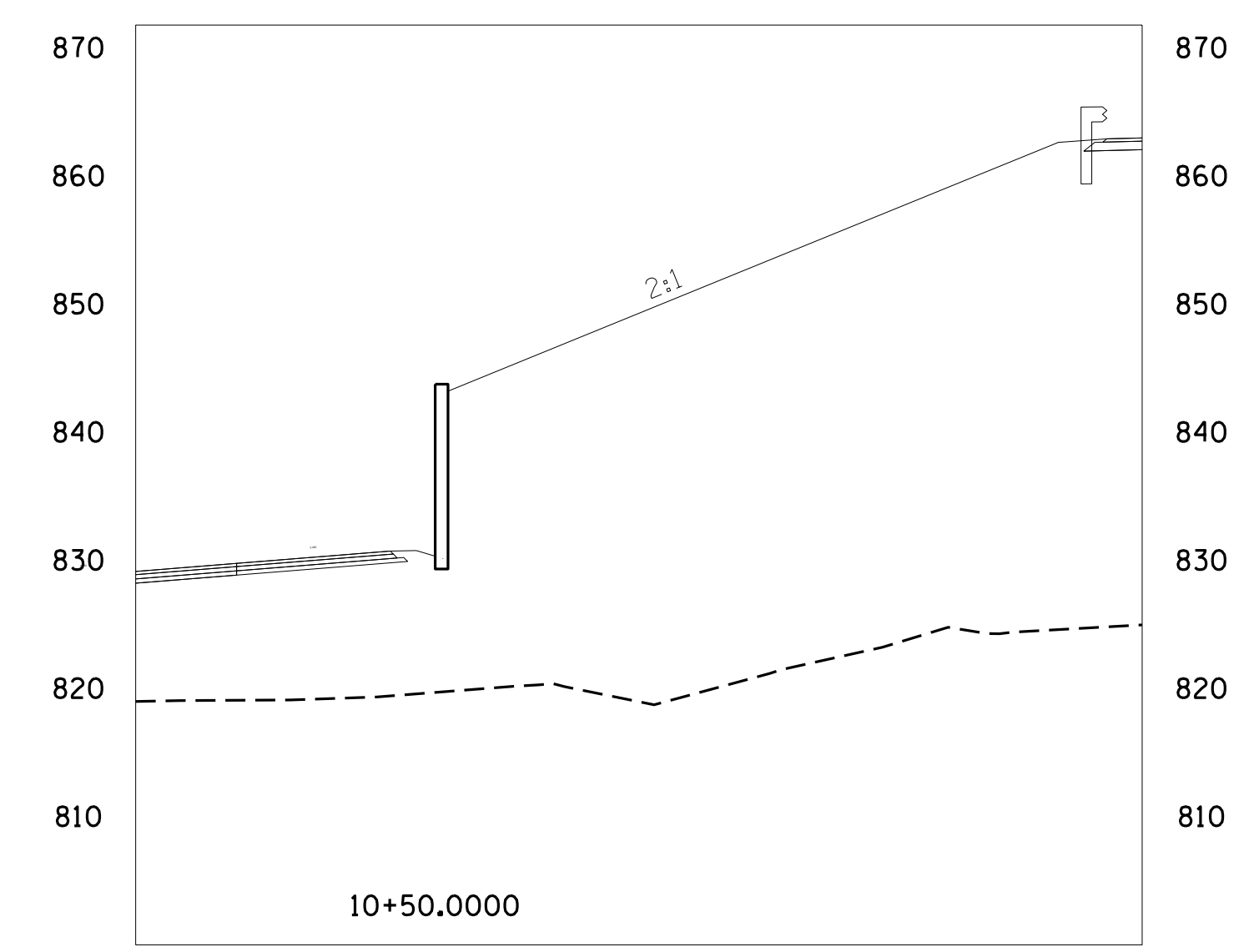
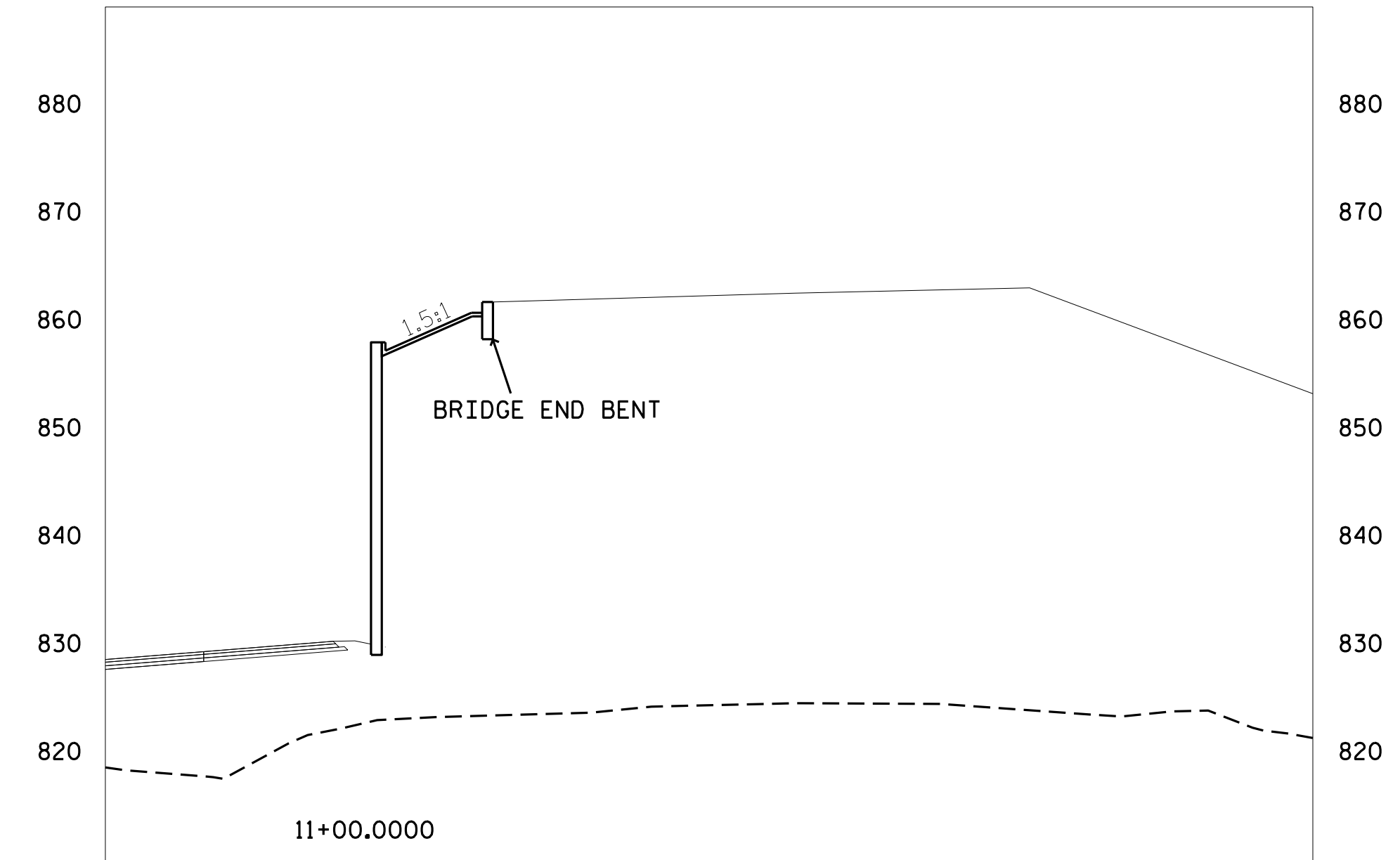
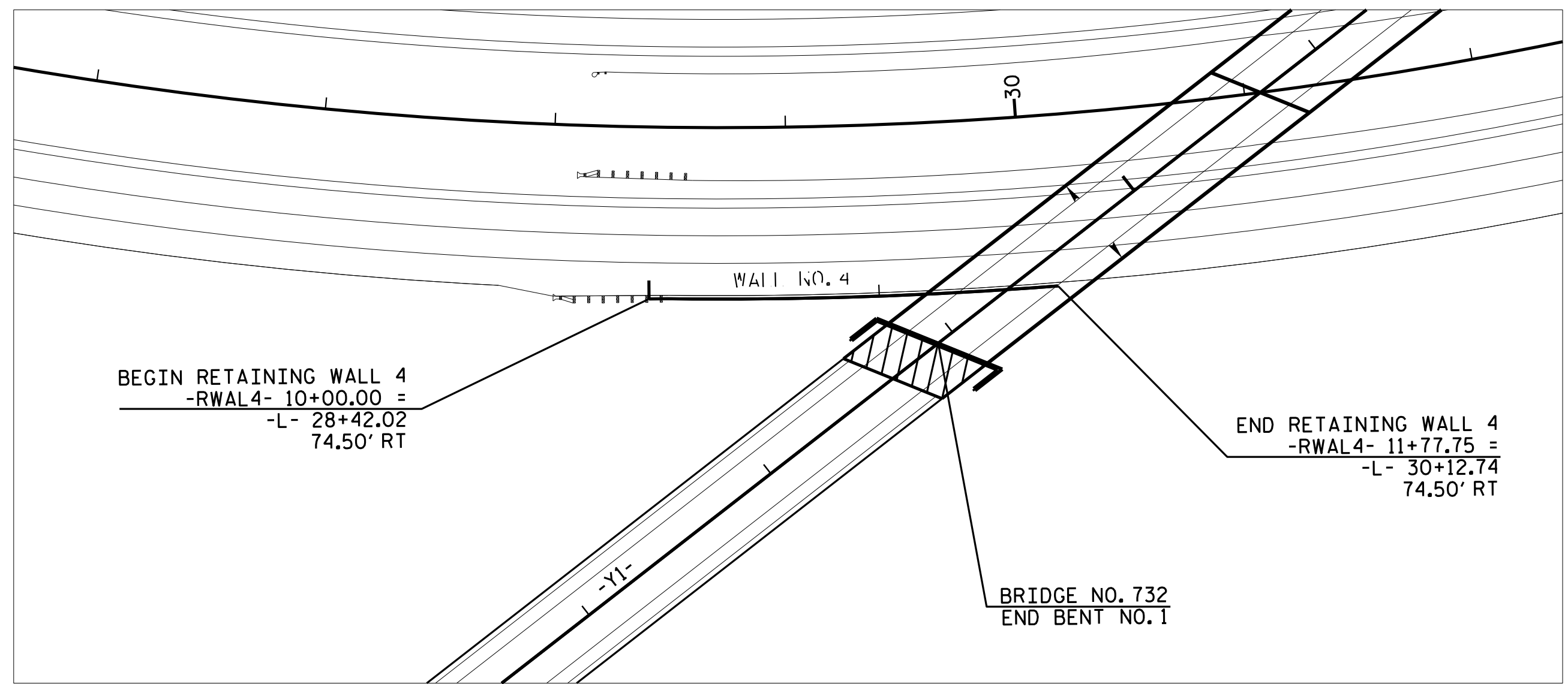
DocuSigned by:
Michael H. Stephens 06/01/2022

8196315B3C7046C SIGNATURE DATE SIGNATURE DATE

**DOCUMENT NOT CONSIDERED FINAL
UNLESS ALL SIGNATURES COMPLETED**

ESTIMATED MSE WALL QUANTITIES (SQUARE FEET)	
MSE RETAINING WALL NO. 4	2,625 SF

NOTES:
 1) WALL AREA INCLUDES EMBEDMENT
 2) FOR EMBEDMENT DEPTHS, SEE WALL EMBEDMENT TABLE



PROJECT NO.: 34839.1.1 (U-2579AA)
 FORSYTH COUNTY
 STATION: -L- STA. 28+42.02
 SHEET 4 OF 12 WALL NO. 4

PREPARED BY: MHS DATE: 6/1/22
 REVIEWED BY: SCC DATE: 6/1/22

**NORTH CAROLINA
 DEPARTMENT OF TRANSPORTATION
 DIVISION OF HIGHWAYS**

**GEOTECHNICAL
 ENGINEERING UNIT**

REVISIONS						SHEET NO. W-4
NO.	BY	DATE	NO.	BY	DATE	
1			3			
2			4			