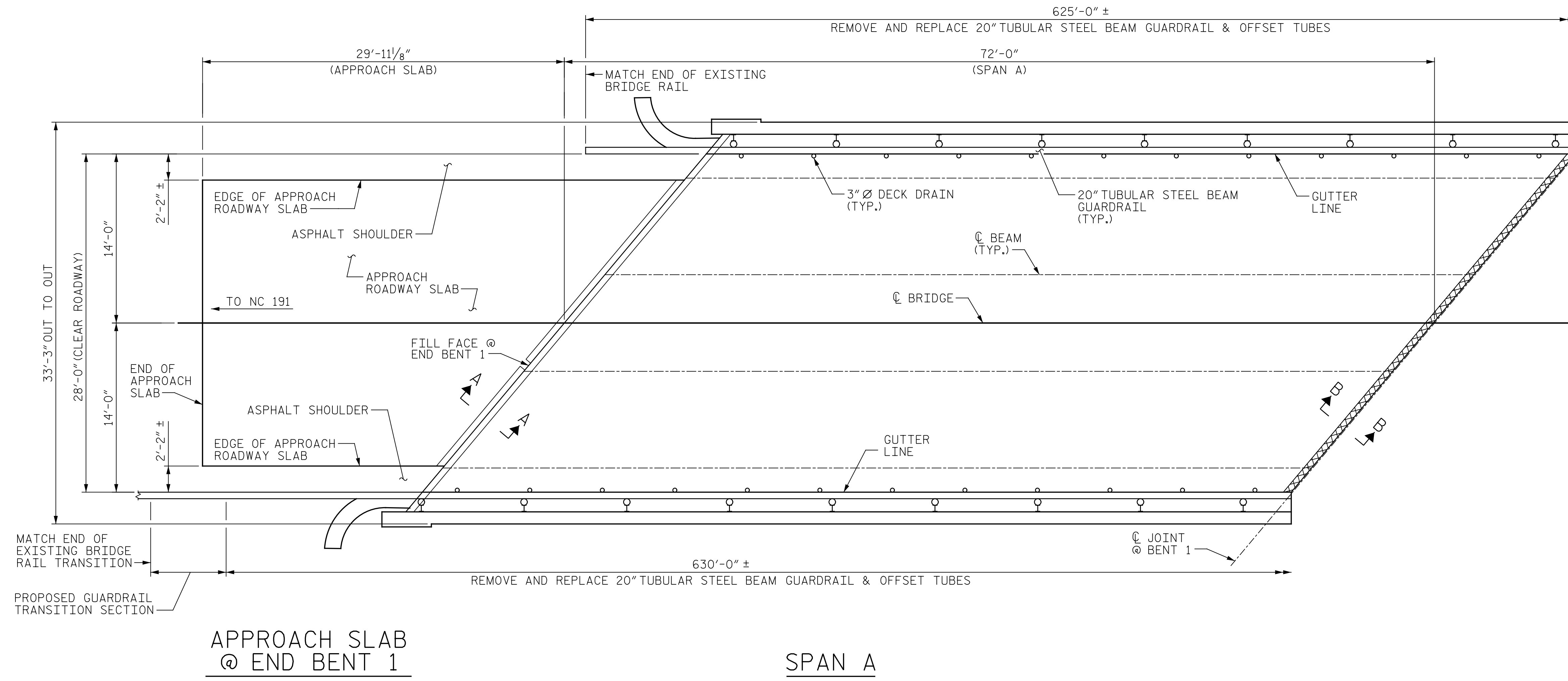
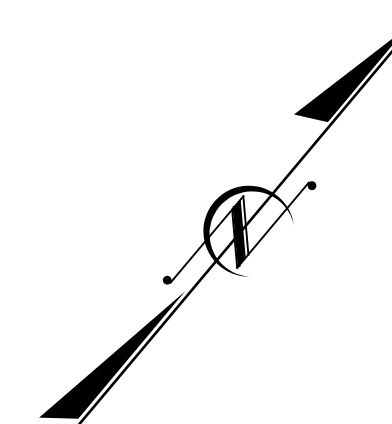


p:\gfn\p-w\ben\ty.com\gfn\p-w-01\Documents\Projects\67945\5-WorKing\Task 005 - I-5889B Rehab\Structures\CAD\2.0 100% Plans\406_211.I-5889B_SMJ_S01_004_100356
 7/21/2022 4:03:41 PM pdf_color_gfcf_FS.plt I-5889B.Tbl



APPROACH SLAB @ END BENT 1

SPAN A

NOTES:

REPAIR LOCATIONS AND ESTIMATED QUANTITIES ARE GIVEN WITH THE BEST INFORMATION AVAILABLE. IF ADDITIONAL REPAIRS NOT SHOWN ON THE DRAWINGS ARE DEEMED NECESSARY BY THE ENGINEER, THE ENGINEER WILL NOTE ON THE DRAWINGS THE APPROXIMATE LOCATIONS AND DESCRIPTION OF THE REPAIRS AND ADJUST THE ACTUAL QUANTITIES ENTERED INTO THE REPAIR QUANTITY TABLE.

CONCRETE COVER FOR TOP BARS IN THE DECK SLAB IS 1 1/16" PER THE EXISTING BRIDGE PLANS.

FOR SECTION A-A AND B-B, SEE "JOINT DETAILS" SHEET.

FOR FINE MILLING, SEE SPECIAL PROVISIONS.

THE CONTRACTOR SHALL REMOVE AND REPLACE THE 20" TUBULAR STEEL BEAM GUARDRAIL. THE ENGINEER WILL SELECT THOSE SECTIONS OF THE EXISTING GUARDRAIL SUITABLE FOR FUTURE USE AND TRANSPORT THEM TO A STOCKPILE FOR THE USE OF THE DEPARTMENT. THE REMAINING GUARDRAIL SECTIONS SHALL BECOME THE PROPERTY OF THE CONTRACTOR AND SHALL BE REMOVED FROM THE PROJECT.

FOR DIMENSIONS OF TUBULAR BEAM GUARDRAIL, POST AND TUBES, SEE "TUBULAR BEAM GUARDRAIL DETAILS" SHEET.

BRIDGE RAIL QUANTITIES (FOR ENTIRE BRIDGE)	
REMOVE 20" TUBULAR STEEL BEAM GUARDRAIL	1275 LF
20" TUBULAR STEEL BEAM GUARDRAIL	1255 LF
REMOVE AND REPLACE W 6X9 POSTS	0 EA
W-TR STEEL BEAM GUARDRAIL TRANSITION SECTIONS	3 EA

- BRIDGE JOINT DEMOLITION
- APPROX. CLASS II SURFACE PREPARATION
- APPROX. CLASS III SURFACE PREPARATION
- UNDERSIDE OF DECK/OVERHANG REPAIR
- ERI EPOXY RESIN INJECTION

TOP OF DECK REPAIR	REPAIR QUANTITY TABLE				UNDERSIDE OF DECK REPAIR					
	APPROACH SLAB 1		SPAN A		SHOTCRETE REPAIR		ESTIMATE		ACTUAL	
	ESTIMATE	ACTUAL	ESTIMATE	ACTUAL	AREA SF	VOLUMN CF	AREA SF	VOLUMN CF	AREA SF	VOLUMN CF
FINE MILLING	78 SY		224 SY		0.0	0.0				
HYDRO-DEMOLITION OF BRIDGE DECK	78 SY		224 SY		0.0	0.0				
CLASS II SURFACE PREPARATION	0.0 SY		0.0 SY		0.0	0.0				
CLASS III SURFACE PREPARATION	0.0 SY		0.0 SY		0.0	0.0				
LATEX MODIFIED CONCRETE - VES OVERLAY	5.7 CY		16.3 SF							
PLACING & FINISHING LMC - VES OVERLAY	78 SY		224 SY							
BRIDGE JOINT DEMOLITION	15 SF		37 SF							
GROOVING BRIDGE FLOORS	672 SF		1755 SF							
									ESTIMATE	ACTUAL
									0.0 LF	

VALUES IN CHART REPRESENT ESTIMATED UNDERSIDE OF DECK REPAIR TOTALS AFTER REMOVAL OF UNSOUND CONCRETE, MINIMUM OF 1" BEHIND REBAR AND MINIMUM 2" CLEAR TO SAWCUT. FOR REPAIR DETAILS, SEE "OVERHANG UNDERSIDE REPAIR DETAILS" SHEET.

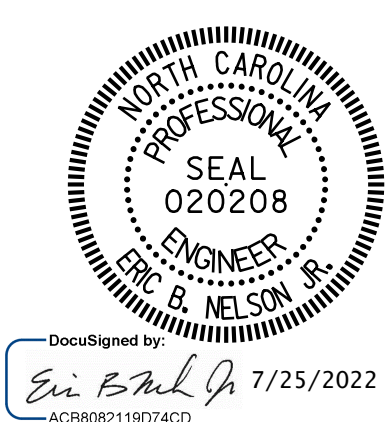
PAYMENT FOR CLASS II AND CLASS III SURFACE PREPARATION IS BASED ON THE SQUARE YARDS OF ADDITIONAL DEMOLITION REQUIRED FOLLOWING HYDRO-DEMOLITION OF THE BRIDGE DECK. SEE "OVERLAY SURFACE PREPARATION" SPECIAL PROVISION.

PROJECT NO. I-5889B
BUNCOMBE COUNTY
 BRIDGE NO. 100356

SHEET 1 OF 8

STATE OF NORTH CAROLINA
 DEPARTMENT OF TRANSPORTATION
 RALEIGH

**PLAN OF SPANS
 SPAN A AND
 APPROACH SLAB**



DRAWN BY: J. HARRIS DATE: 6/2022
 CHECKED BY: J. YANACCONO DATE: 6/2022



DOCUMENT NOT CONSIDERED FINAL UNLESS ALL SIGNATURES COMPLETED

REVISIONS						SHEET NO.
NO.	BY:	DATE:	NO.	BY:	DATE:	
1			3			S6-4
2			4			TOTAL SHEETS 133