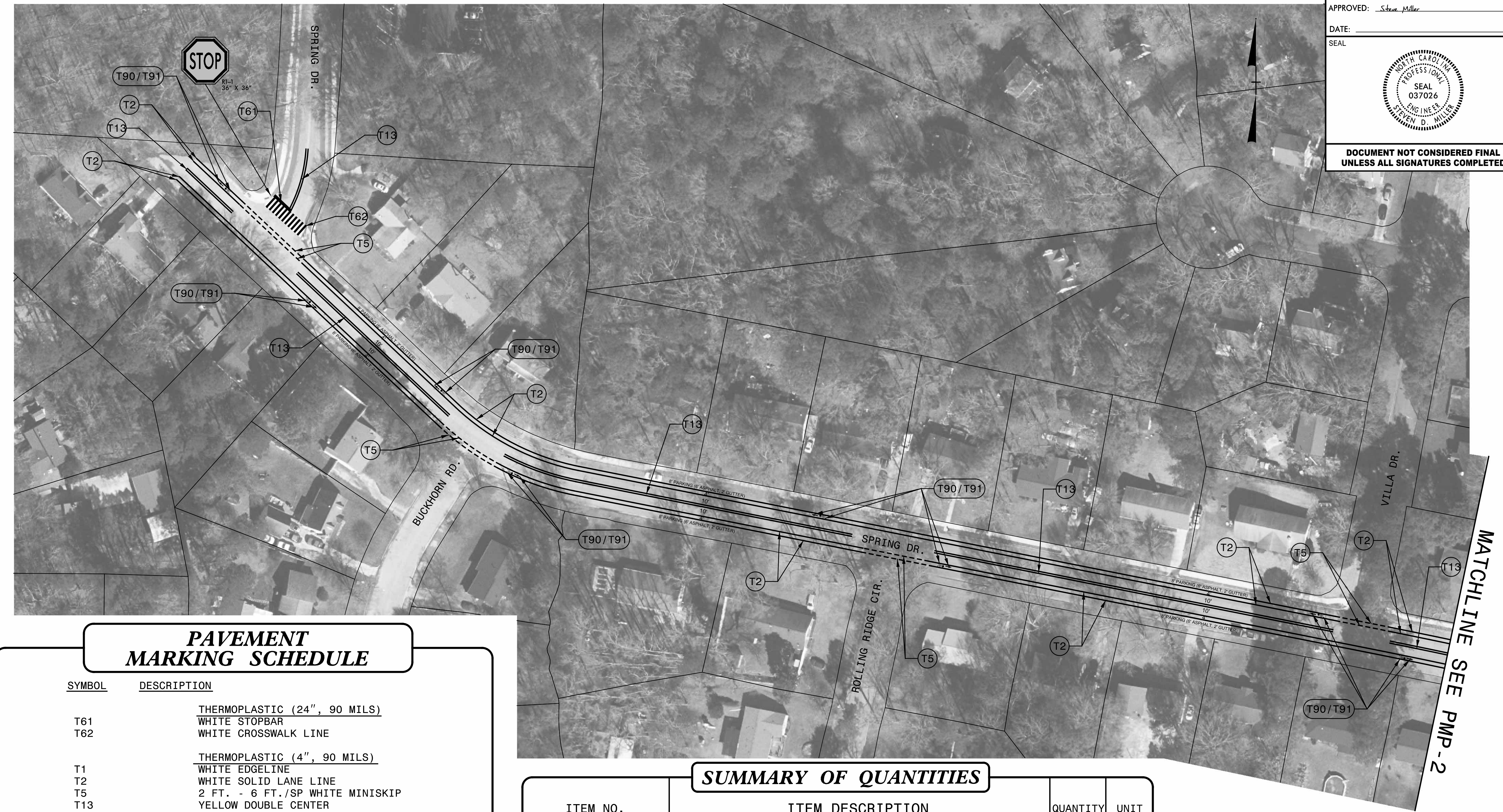


**DOCUMENT NOT CONSIDERED FINAL
UNLESS ALL SIGNATURES COMPLETED**



PAVEMENT MARKING SCHEDULE

SYMBOL	DESCRIPTION
T61	THERMOPLASTIC (24", 90 MILS) WHITE STOPBAR
T62	WHITE CROSSWALK LINE
T1	THERMOPLASTIC (4", 90 MILS) WHITE EDGELINE
T2	WHITE SOLID LANE LINE
T5	2 FT. - 6 FT./SP WHITE MINISKIP
T13	YELLOW DOUBLE CENTER
T70	THERMOPLASTIC PAVEMENT MARKING SYMBOLS (90 MILS) LEFT TURN ARROW
T71	RIGHT TURN ARROW
T74	COMBO. STRAIGHT/RIGHT TURN ARROW
T90	BICYCLE SYMBOL, HEATED IN PLACE
T91	BICYCLE STRAIGHT ARROW, HEATED IN PALCE
T94	SHARROW, HEATED IN PLACE
T100	THERMOPLASTIC PAVEMENT MARKING CHARACTER (90 MILS) ALPHANUMERIC CHARACTER

SUMMARY OF QUANTITIES

ITEM NO.		ITEM DESCRIPTION	QUANTITY	UNIT
DESC. NO.	SECT. NO.			
4072000000-E	903	SUPPORTS, 3 LB STEEL U-CHANNEL	15	LF
4102000000-N	904	SIGN ERECTION, TYPE E	1	EA
4685000000-E	1205	THERMOPLASTIC PAVEMENT MARKING LINES (4", 90 MILS)	14,763	LF
4725000000-E	1205	THERMOPLASTIC PAVEMENT MARKING SYMBOL (90 MILS)	34	EA
4709000000-E	1205	THERMOPLASTIC PAVEMENT MARKING LINES (24", 90 MILS)	167	LF

INDEX

SHEET NO.	DESCRIPTION
PMP-1-2	SPRING DRIVE
PMP-3-4	THOMPSON ROAD

8/14/2022 SE22.031.02_Pavement_Markings_Spring&Thompson\TP\Traffic\PMMP\PMMP-1.dgn