

GEOTECHNICAL ENGINEER

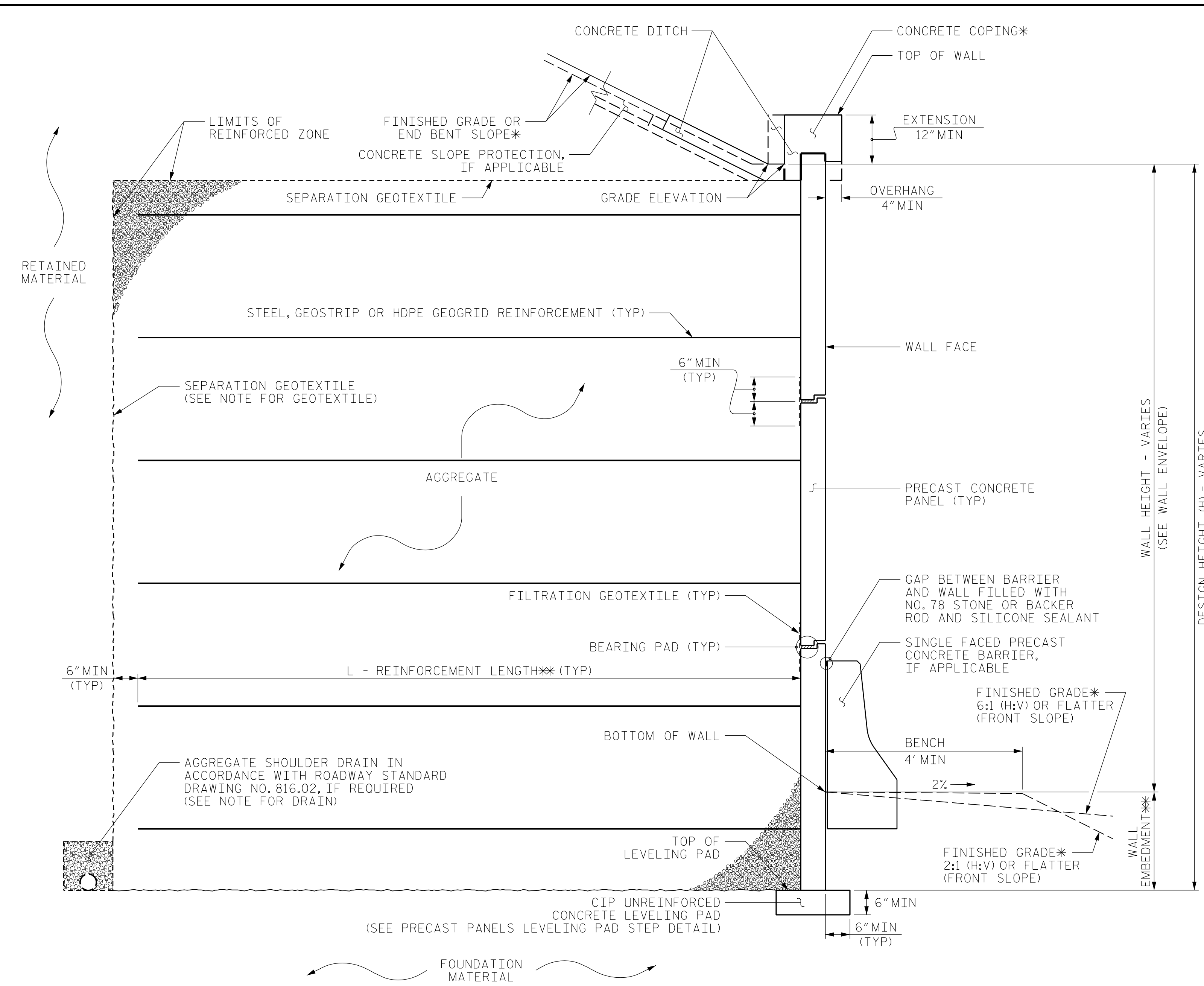
ENGINEER

SEAL 040231

Matthew J. Alexander

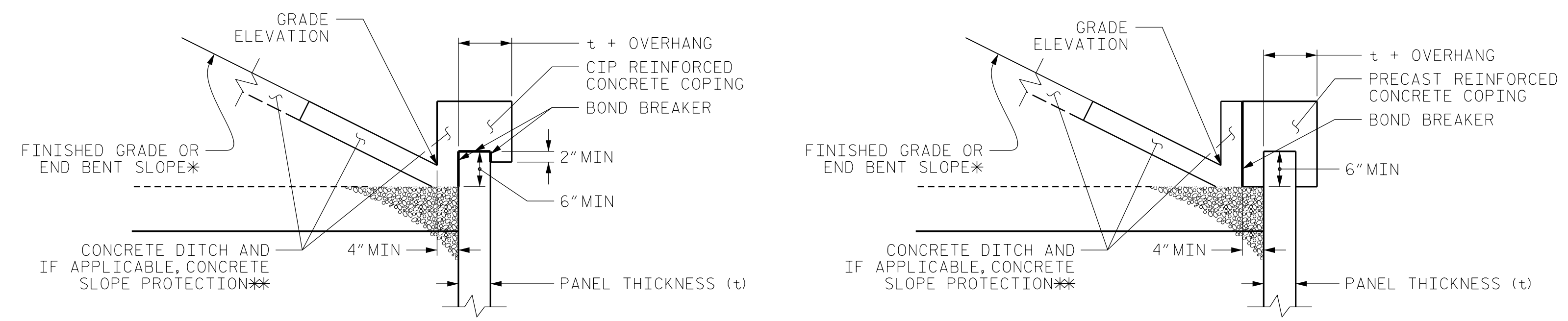
DocuSigned by: Matt Alexander 04/19/2022

DOCUMENT NOT CONSIDERED FINAL UNLESS ALL SIGNATURES COMPLETED



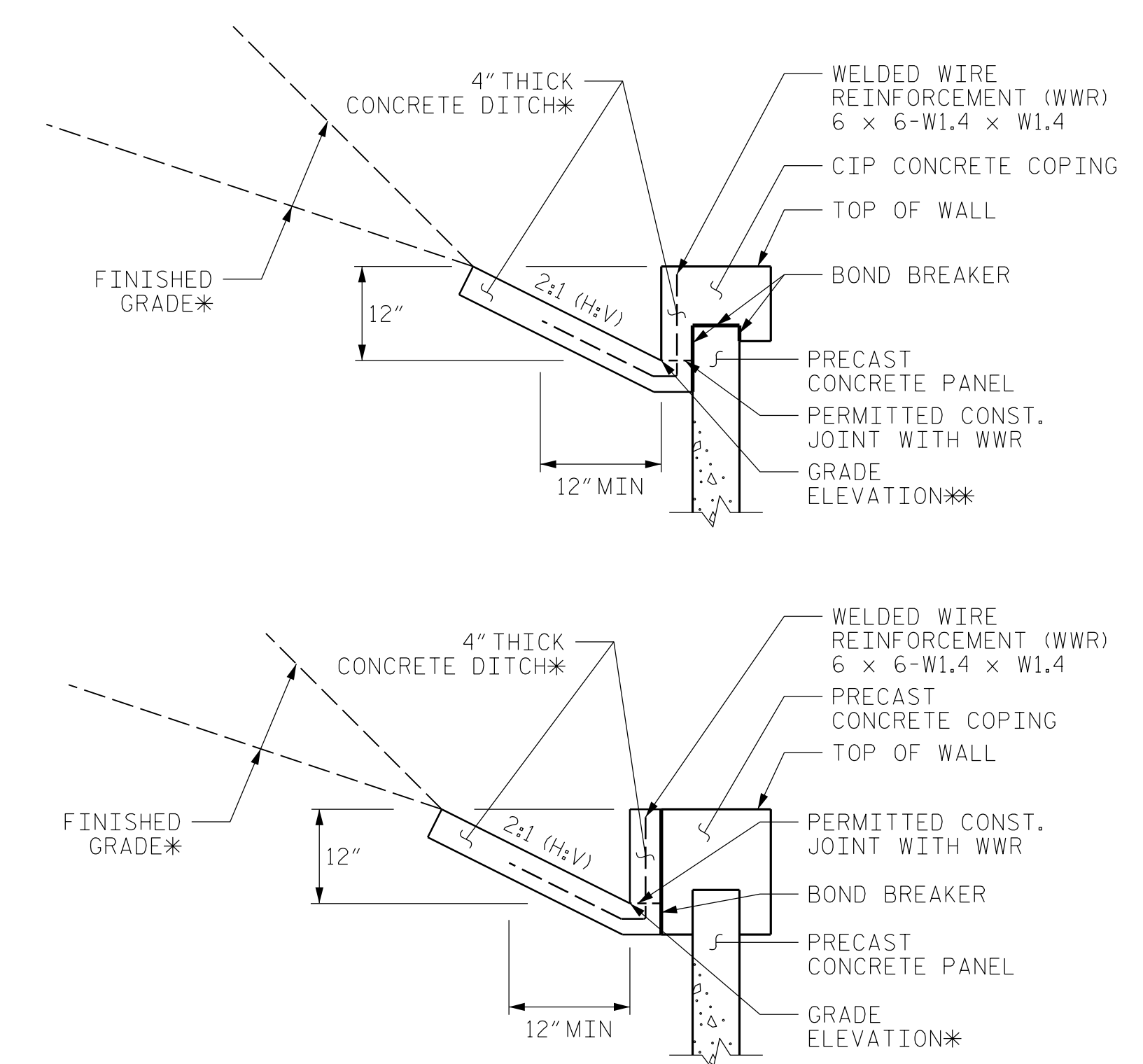
MSE WALL WITH PRECAST PANELS - TYPICAL SECTION

*SEE COPING DETAILS AND PLANS FOR FINISHED GRADE OR END BENT SLOPE DETAILS.
 **SEE MSE RETAINING WALLS PROVISION AND IF APPLICABLE, MSE WALL NOTES FOR WALL EMBEDMENT AND REINFORCEMENT LENGTH REQUIREMENTS.



COPING DETAILS

*SEE PLANS FOR FINISHED GRADE OR END BENT SLOPE DETAILS.
 **SEE CONCRETE DITCH BEHIND WALL DETAILS.



CONCRETE DITCH BEHIND WALL WITH CONCRETE COPING

*SEE WALL ENVELOPE FOR GRADE ELEVATIONS.

FOR CONCRETE DITCHES, SEE SECTION 850 OF THE STANDARD SPECIFICATIONS.

PROJECT NO.: 47533.1.2 (I-5987A)
 ROBESON COUNTY
 STATION: VARIES
 SHEET 8 OF 11 WALL ID NO. W1A, W1B, W2A, W2B, W3A, W3B

PREPARED BY: ALEXANDER, M. J. DATE: 04/2022
 REVIEWED BY: RIGGS, A. F. DATE: 04/2022

Prepared in the Office of:

Terracon

Consulting Engineers and Scientists

2401 BRENTWOOD ROAD, SUITE 107
 RALEIGH, NORTH CAROLINA 27604
 NC REGISTERED ENGINEERING FIRM: F-0869
 NC REGISTERED GEOLOGIC FIRM: C-367

NORTH CAROLINA DEPARTMENT OF TRANSPORTATION DIVISION OF HIGHWAYS

GEOTECHNICAL ENGINEERING UNIT

MSE ABUTMENT RETAINING WALL TYPICAL SECTION AWAY FROM ABUTMENT

REVISIONS					
NO.	BY	DATE	NO.	BY	DATE
1			3		
2			4		

SHEET NO. W-3