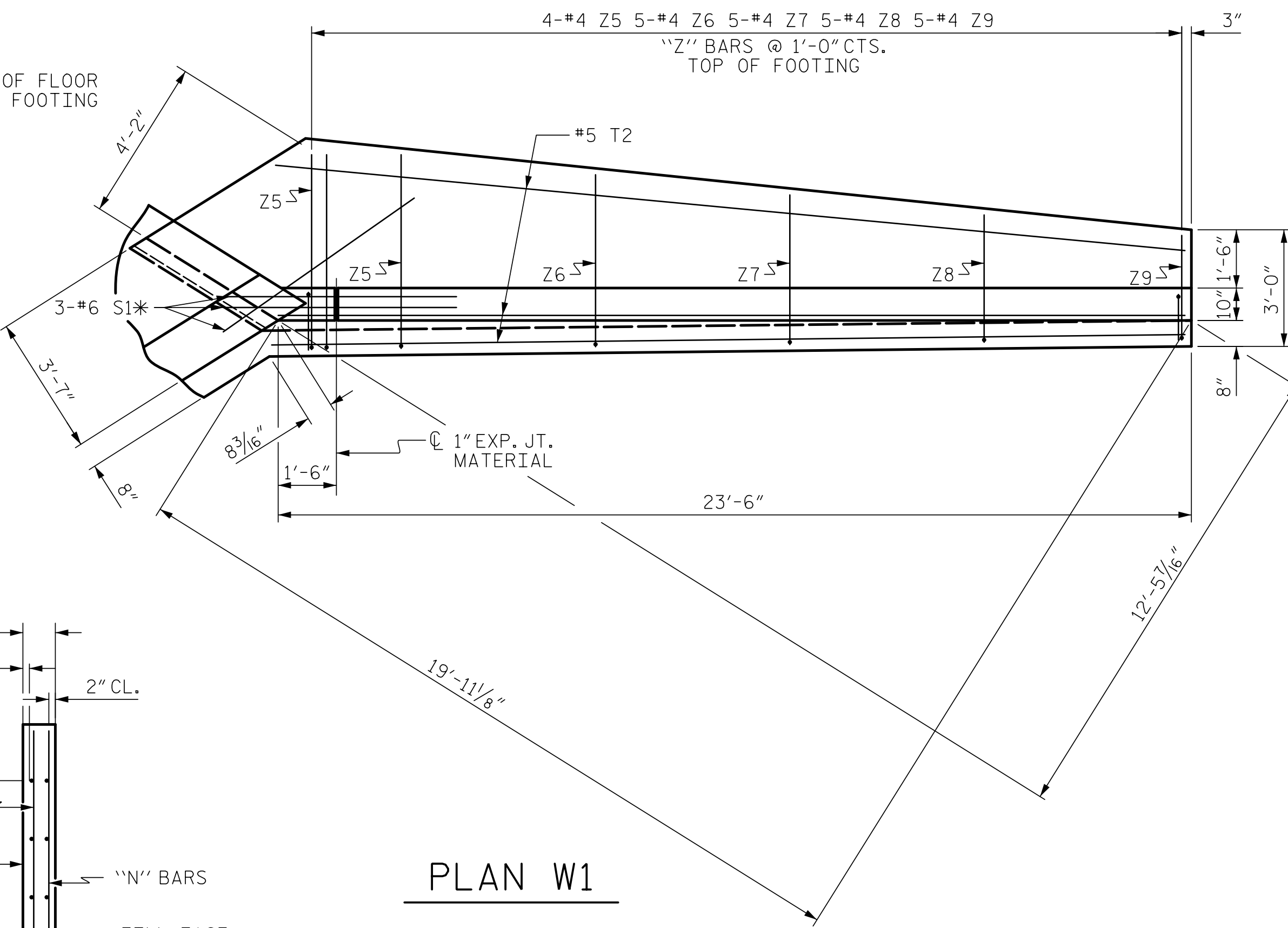
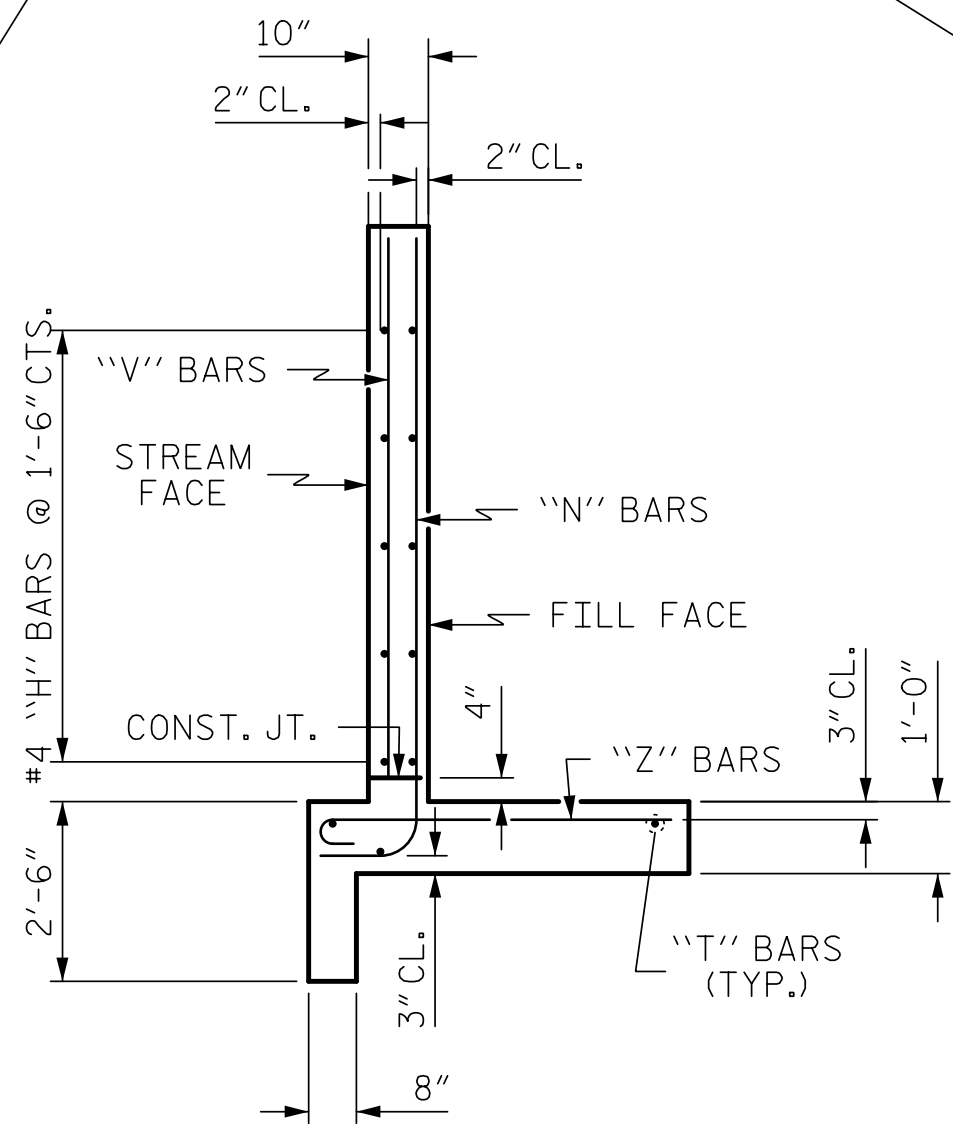


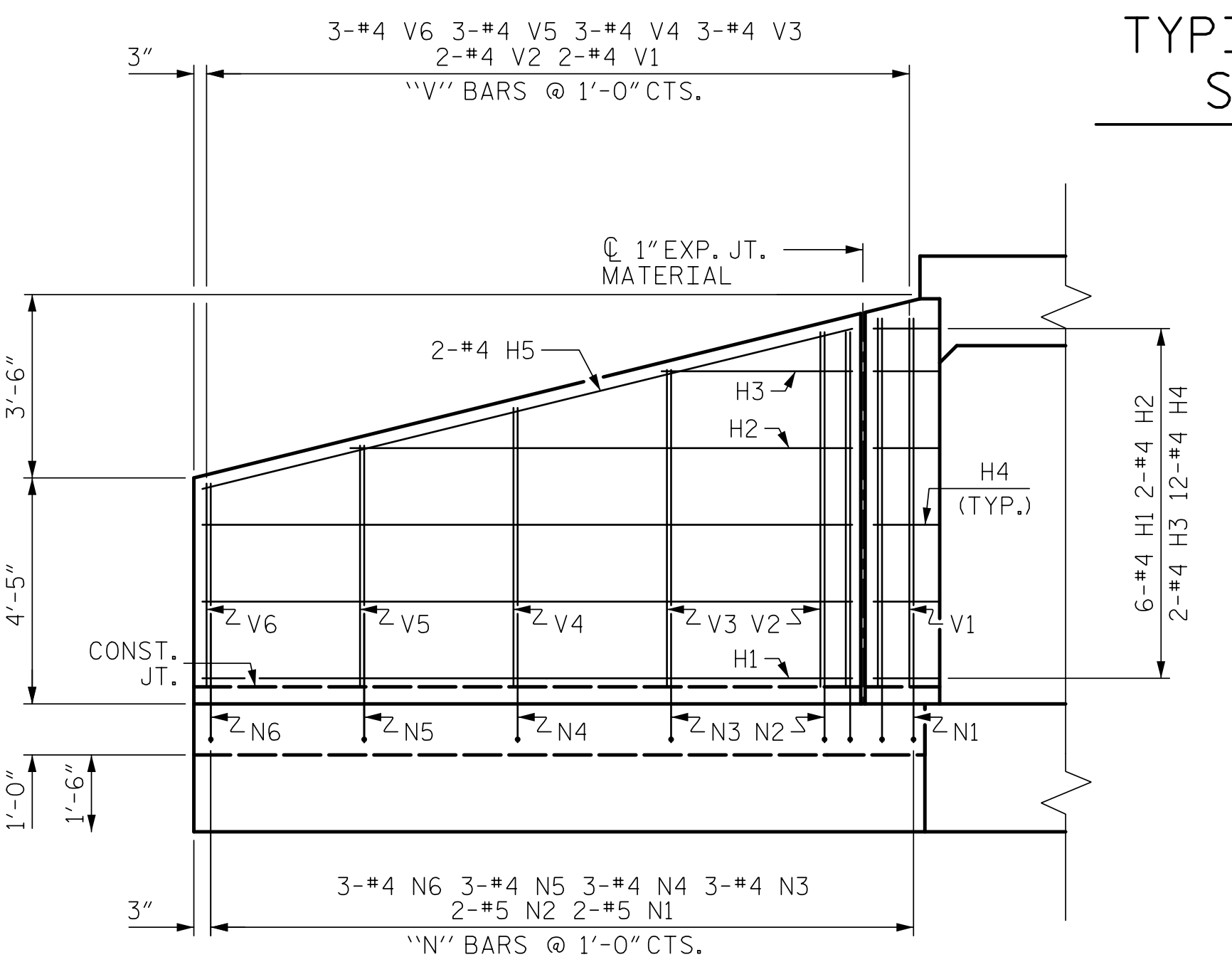
PLAN W2



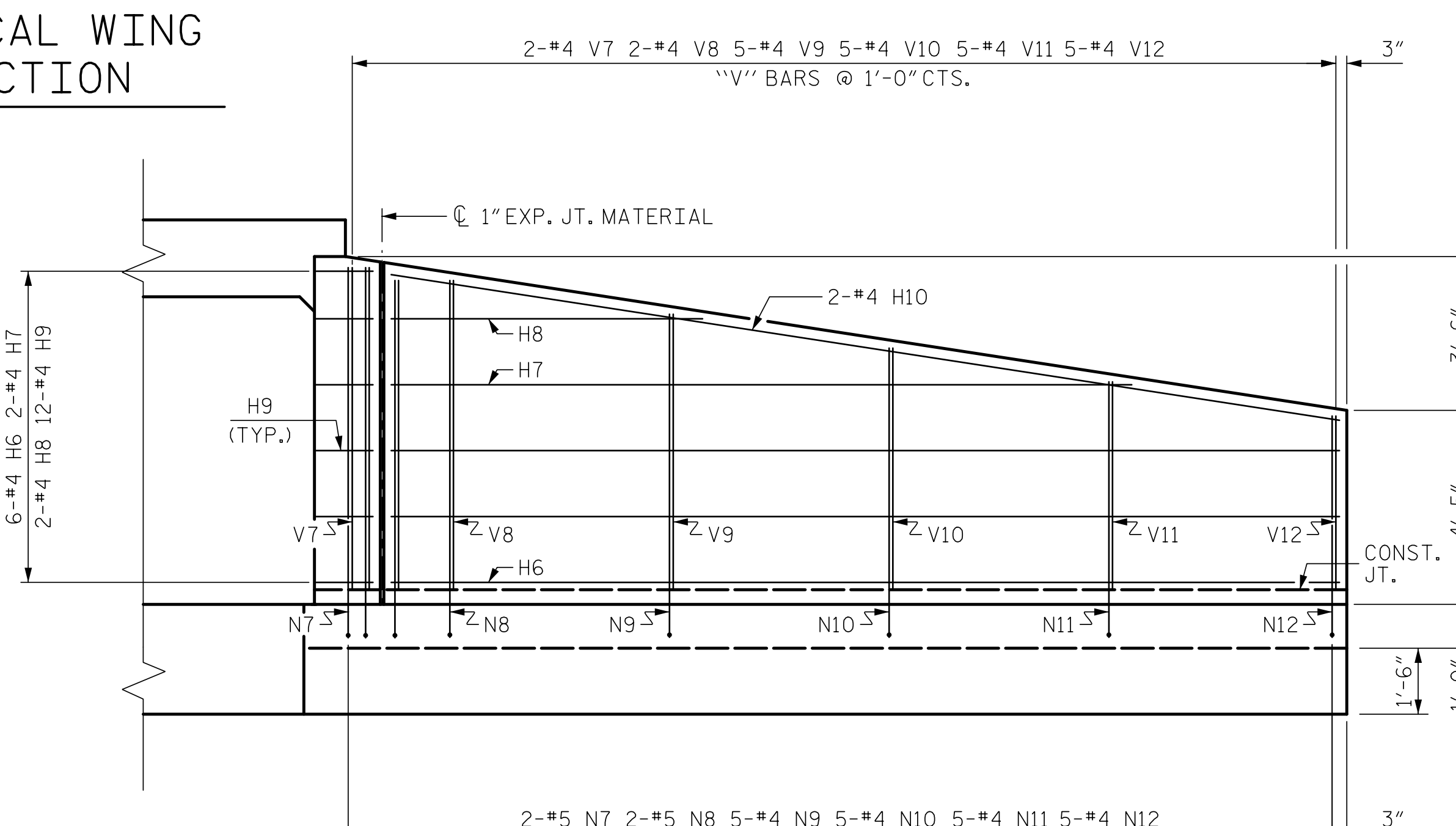
PLAN W1



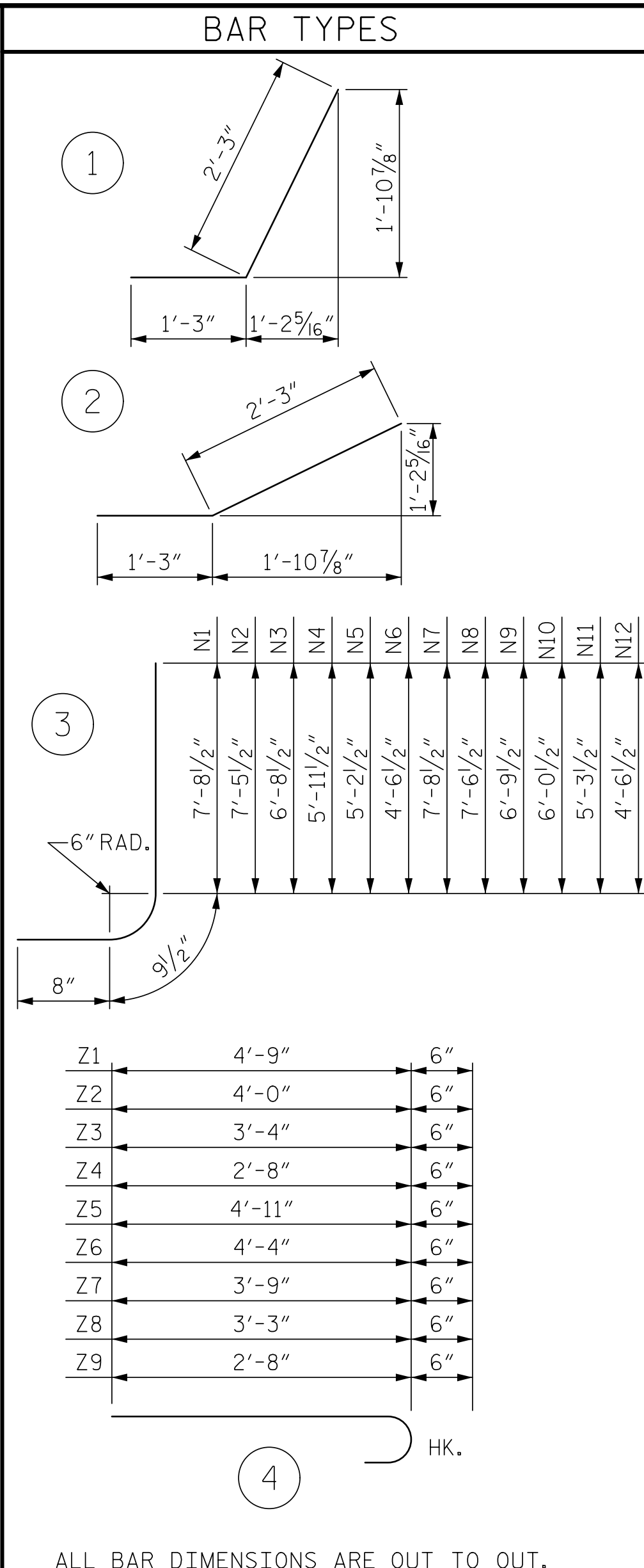
TYPICAL WING SECTION



ELEVATION W2



ELEVATION W1



ALL BAR DIMENSIONS ARE OUT TO OUT.

NOTES:
 A 3 FOOT STRIP OF FILTER FABRIC SHALL BE ATTACHED TO THE FILL FACE OF THE WING COVERING THE ENTIRE LENGTH OF THE EXPANSION JOINT.
 G1 BARS IN HEADWALL ARE INCLUDED WITH THE BARREL REINFORCING STEEL.

BILL OF MATERIAL					
BAR	NO.	SIZE	TYPE	LENGTH	WEIGHT
H1	12	#4	STR	12'-8"	102
H2	4	#4	STR	9'-9"	26
H3	4	#4	STR	3'-8"	10
H4	24	#4	1	3'-6"	56
H5	4	#4	STR	13'-1"	35
H6	12	#4	STR	21'-7"	173
H7	4	#4	STR	16'-10"	45
H8	4	#4	STR	7'-1"	19
H9	24	#4	2	3'-6"	56
H10	4	#4	STR	21'-10"	58
N1	4	#5	3	9'-2"	38
N2	4	#5	3	8'-11"	37
N3	6	#4	3	8'-2"	33
N4	6	#4	3	7'-5"	30
N5	6	#4	3	6'-8"	27
N6	6	#4	3	6'-0"	24
N7	4	#5	3	9'-2"	38
N8	4	#5	3	9'-0"	38
N9	10	#4	3	8'-3"	55
N10	10	#4	3	7'-6"	50
N11	10	#4	3	6'-9"	45
N12	10	#4	3	6'-0"	40
S1	12	#6	STR	6'-0"	108
T1	6	#5	STR	14'-7"	91
T2	6	#5	STR	23'-6"	147
V1	4	#4	STR	7'-2"	19
V2	4	#4	STR	6'-11"	18
V3	6	#4	STR	6'-2"	25
V4	6	#4	STR	5'-5"	22
V5	6	#4	STR	4'-8"	19
V6	6	#4	STR	3'-11"	16
V7	4	#4	STR	7'-2"	19
V8	4	#4	STR	6'-10"	18
V9	10	#4	STR	6'-1"	41
V10	10	#4	STR	5'-4"	36
V11	10	#4	STR	4'-7"	31
V12	10	#4	STR	3'-11"	26
Z1	6	#4	4	5'-3"	21
Z2	8	#4	4	4'-6"	24
Z3	8	#4	4	3'-10"	20
Z4	8	#4	4	3'-2"	17
Z5	8	#4	4	5'-5"	29
Z6	10	#4	4	4'-10"	32
Z7	10	#4	4	4'-3"	28
Z8	10	#4	4	3'-9"	25
Z9	10	#4	4	3'-2"	21
REINFORCING STEEL					1,888 LBS
FOR 4 WINGS					
CLASS A CONCRETE					30.2 CY
4 WINGS					1.7 CY
2 HEADWALLS					1.9 CY
2 END CURTAIN WALLS					33.8 CY
TOTAL					

PROJECT NO. I-5987A
ROBESON COUNTY
 STATION: 354+06.00 -L-

SHEET 13 OF 13

STATE OF NORTH CAROLINA
 DEPARTMENT OF TRANSPORTATION
 RALEIGH

WINGS FOR
 CONCRETE BOX CULVERT
 H = 7'-0" SLOPE = 3:1
 64° SKEW

3/17/2022
 X:\MCDOT\I-5987A\Structures\Site 21 - 354+06 -L-\FinalPlans\DCNs\414_025_I-5987A_Site.21.SMU.CU.013.dgn
 User:zsmith

DOCUMENT NOT CONSIDERED FINAL
 UNLESS ALL SIGNATURES COMPLETED

TGS ENGINEERS
 706 HILLSBOROUGH STREET
 SUITE 200
 RALEIGH, NC 27603
 PH (919) 773-8887
 CORP. LICENSE NO.: C-0275

REVISIONS					
NO.	BY:	DATE:	NO.	BY:	DATE:
1			3		
2			4		

SHEET NO. C21-13
 TOTAL SHEETS 13

FILE NAME: 414_019_I-5987A_Site.21.SMU.CU.010.dgn

DRAWN BY : ZCS DATE : 11/21
 CHECKED BY : MGC DATE : 12/21
 DESIGN ENGINEER OF RECORD: ZCS DATE : 2/22