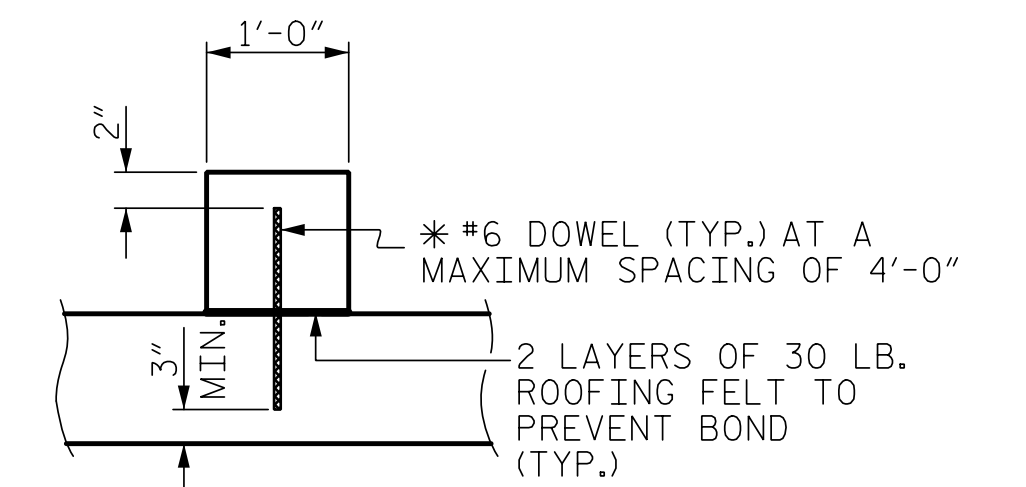
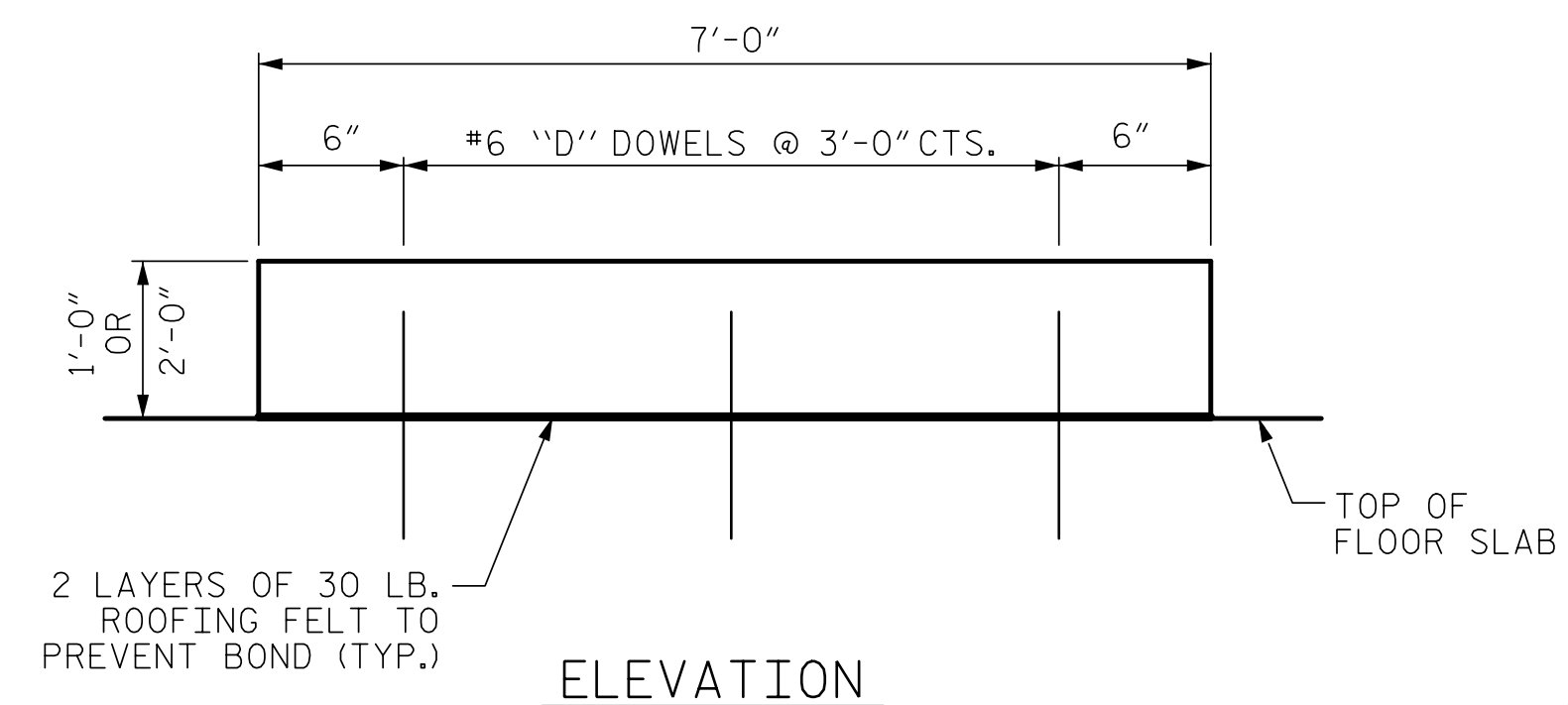
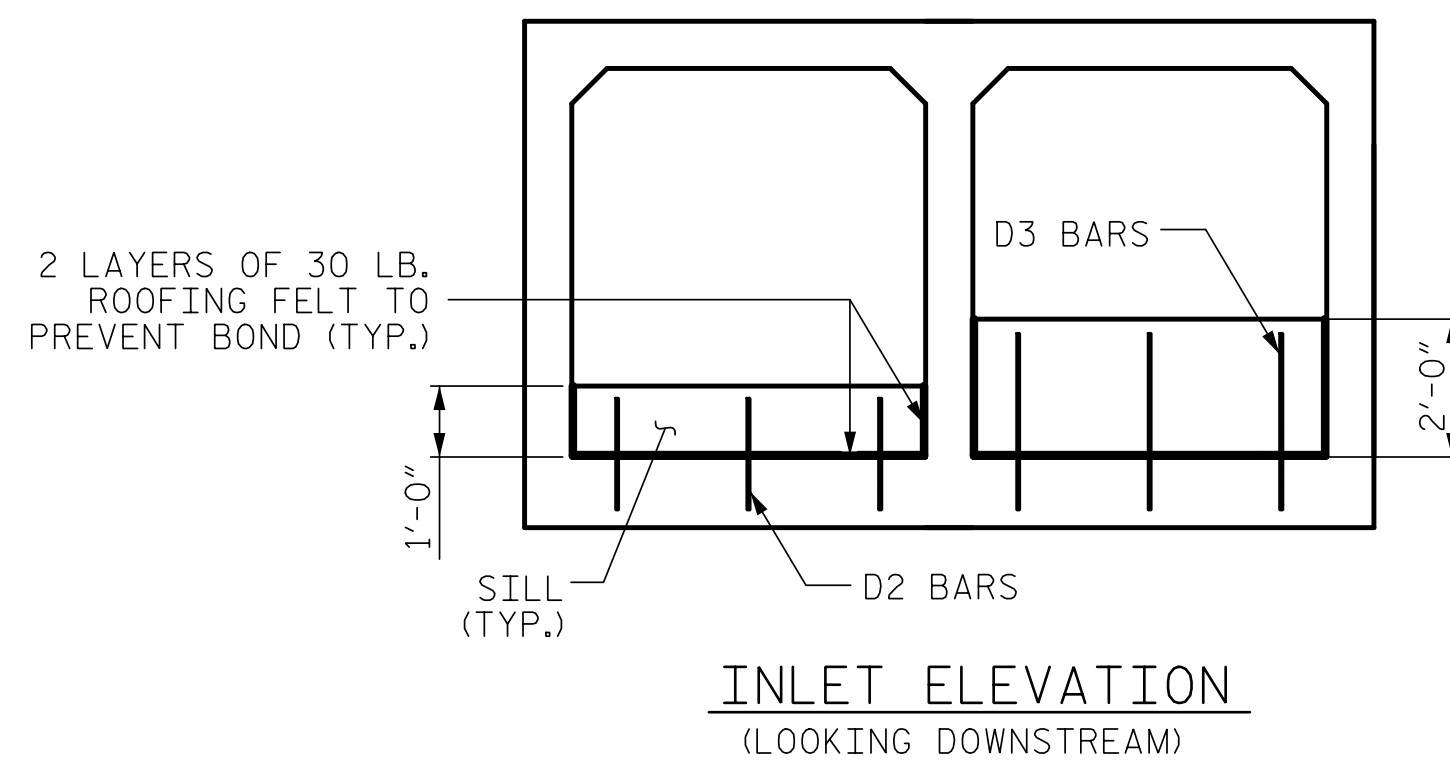


NOTES

MATERIAL EXCAVATED FROM THE EXISTING BED SHALL BE STOCKPILED FOR USE IN THE PROPOSED CULVERT. BED MATERIAL IN THE HIGH FLOW BARREL MAY BE SUPPLEMENTED WITH CLASS B RIP RAP AS NECESSARY. NATIVE MATERIAL SHOULD BE PLACED ON TOP TO PROVIDE A FLAT SURFACE FOR ANIMAL PASSAGE. BED MATERIAL IS SUBJECT TO THE APPROVAL BY THE ENGINEER AND MAY BE SUBJECT TO PERMIT CONDITIONS.

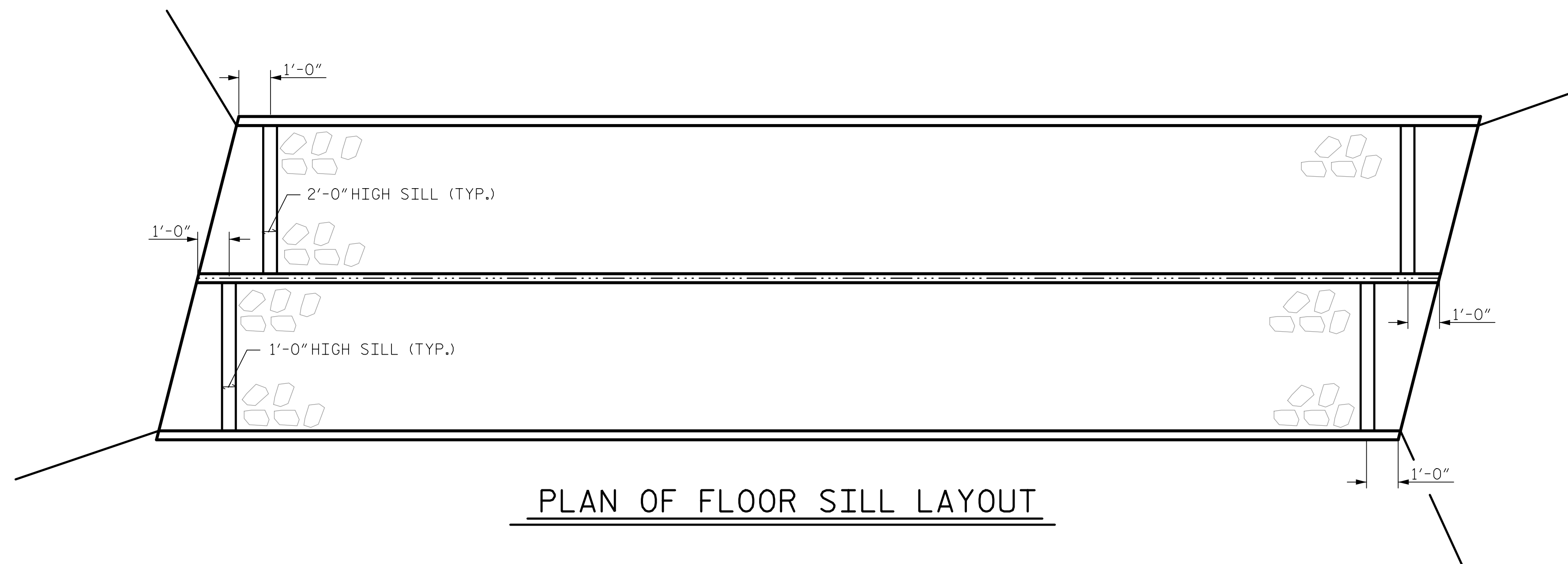
THE ENTIRE COST OF WORK REQUIRED TO PLACE EXCAVATED MATERIAL OR SUPPLEMENTAL MATERIAL AS SHOWN ON THE PLANS SHALL BE INCLUDED IN THE CONTRACT LUMP SUM PRICE BID FOR CULVERT EXCAVATION.

THE ENTIRE COST OF WORK REQUIRED TO CONSTRUCT THE SILLS SHALL BE INCLUDED IN THE VARIOUS PAY ITEMS.



* DOWELS MAY BE PUSHED INTO GREEN CONCRETE AFTER SLAB HAS BEEN FLOAT FINISHED.

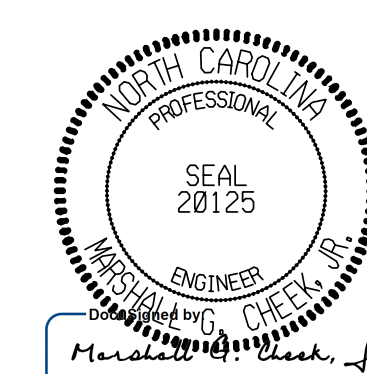
SILL DETAILS



PLAN OF FLOOR SILL LAYOUT

PROJECT NO. I-5987A
ROBESON COUNTY
 STATION: 354+06.00 -L-

SHEET 12 OF 13



5/10/2022 | 10:32 AM EDT

STATE OF NORTH CAROLINA
 DEPARTMENT OF TRANSPORTATION
 RALEIGH

DOUBLE 7 FT. X 7 FT.
 CONCRETE BOX CULVERT

DRAWN BY : ZCS DATE : 11/21
 CHECKED BY : MGC DATE : 12/21

DOCUMENT NOT CONSIDERED FINAL UNLESS ALL SIGNATURES COMPLETED						REVISIONS						SHEET NO.	
TGS ENGINEERS 706 HILLSBOROUGH STREET SUITE 200 RALEIGH, NC 27603 PH (919) 773-8887 CORP. LICENSE NO.: C-0275						NO.	BY:	DATE:	NO.	BY:	DATE:	C21-12	
						1			3			TOTAL SHEETS	
						2			4			13	