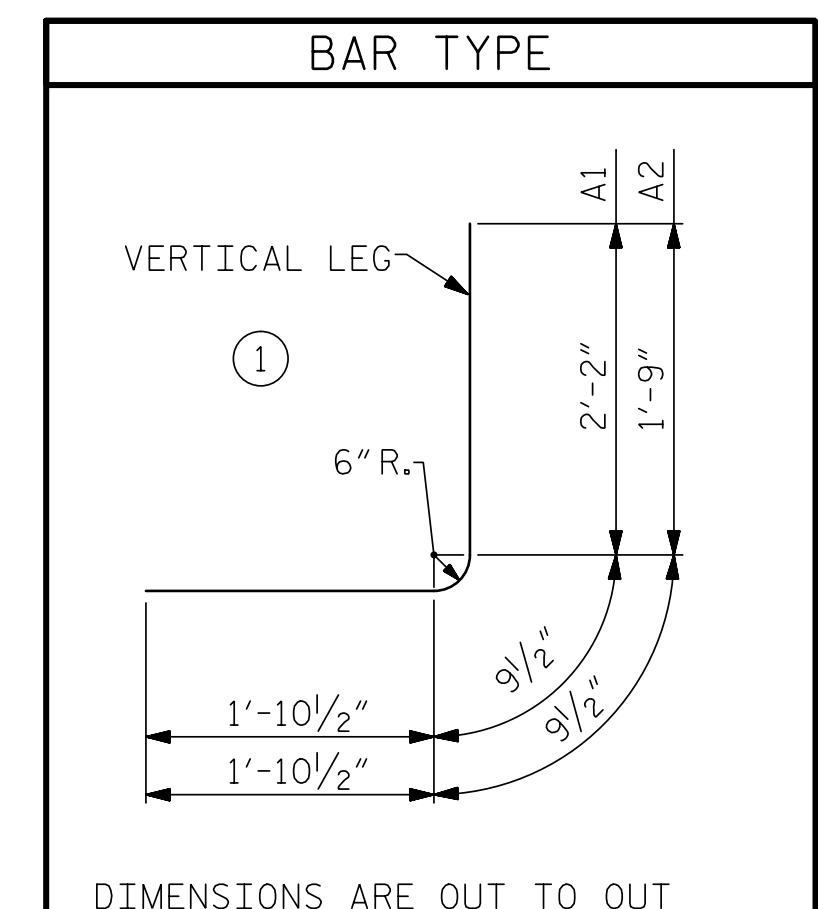
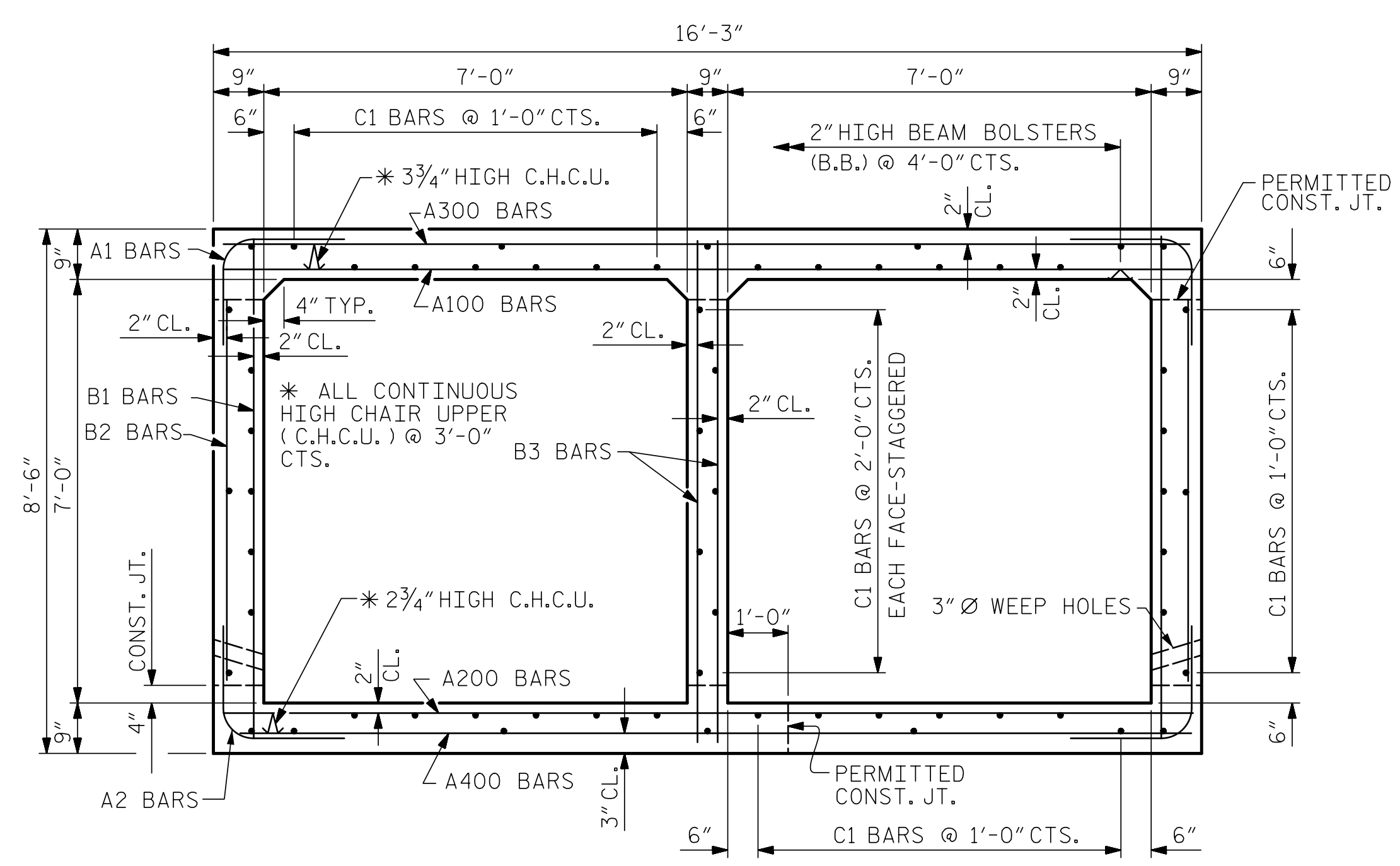
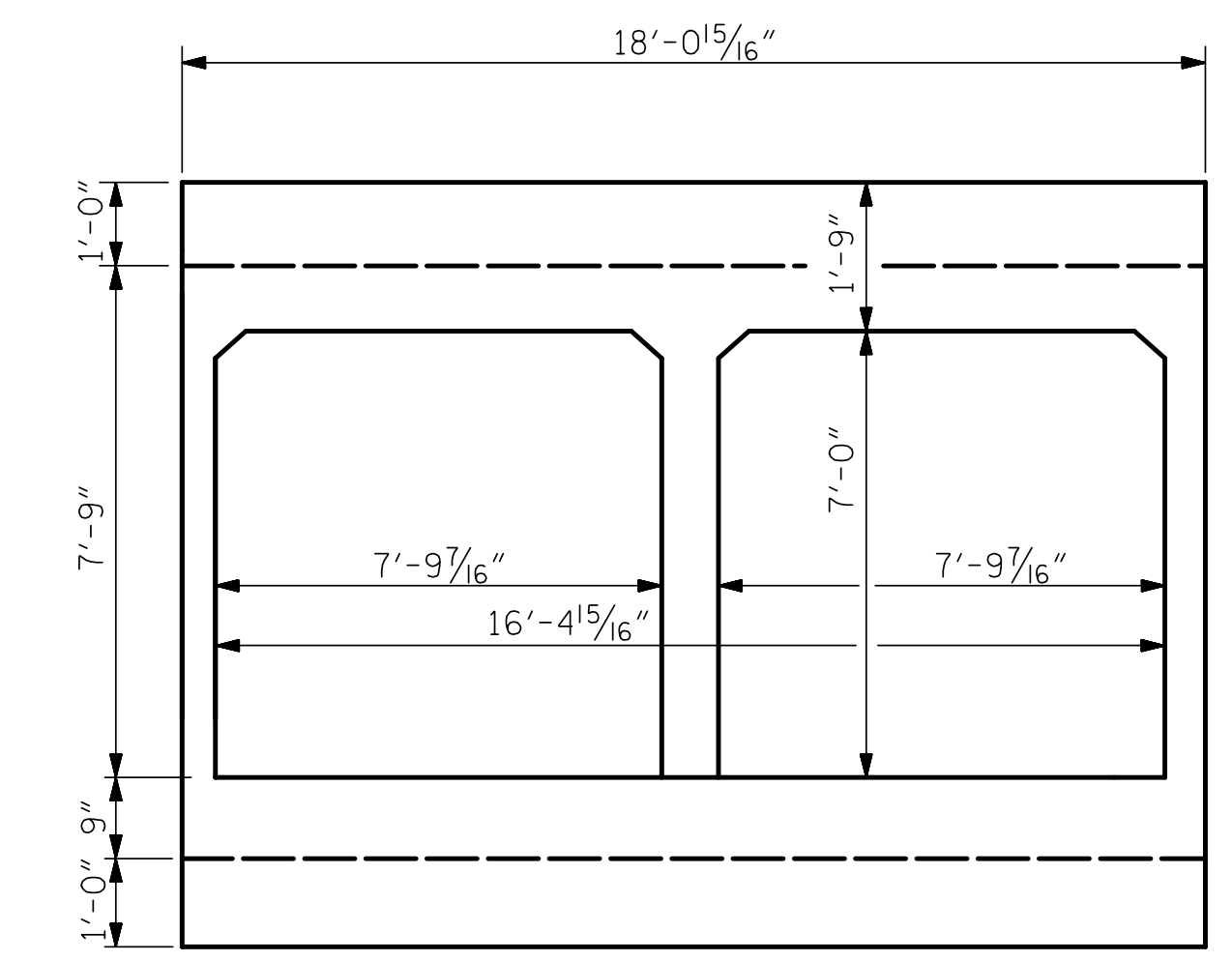


STAGE II BAR SCHEDULE																	
BAR	NO.	SIZE	TYPE	LENGTH	WEIGHT	BAR	NO.	SIZE	TYPE	LENGTH	WEIGHT	BAR	NO.	SIZE	TYPE	LENGTH	WEIGHT
A100	61	#4	STR	15'-10"	645	A300	61	#5	STR	15'-10"	1007	A1	142	#4	1	4'-10"	458
A101	2	#4	STR	14'-8"	20	A301	2	#5	STR	14'-8"	31	A2	142	#4	1	4'-5"	419
A102	2	#4	STR	13'-4"	18	A302	2	#5	STR	13'-4"	28						
A103	2	#4	STR	12'-0"	16	A303	2	#5	STR	12'-0"	25	B1	98	#4	STR	8'-0"	524
A104	2	#4	STR	10'-7"	14	A304	2	#5	STR	10'-7"	22	B2	146	#4	STR	6'-4"	618
A105	2	#4	STR	9'-3"	12	A305	2	#5	STR	9'-3"	19	B3	66	#4	STR	8'-0"	353
A106	2	#4	STR	7'-11"	11	A306	2	#5	STR	7'-11"	17						
A107	2	#4	STR	6'-7"	9	A307	2	#5	STR	6'-7"	14	C1	122	#4	STR	25'-0"	2037
A108	2	#4	STR	5'-3"	7	A308	2	#5	STR	5'-3"	11						
A109	2	#4	STR	3'-10"	5	A309	2	#5	STR	3'-10"	8	S2	24	#6	STR	17'-8"	637
A110	2	#4	STR	2'-6"	3	A310	2	#5	STR	2'-6"	5	D1	34	#6	STR	2'-6"	128
A200	61	#4	STR	15'-10"	645	A400	61	#5	STR	15'-10"	1007						
A201	2	#4	STR	14'-8"	20	A401	2	#5	STR	14'-8"	31						
A202	2	#4	STR	13'-4"	18	A402	2	#5	STR	13'-4"	28						
A203	2	#4	STR	12'-0"	16	A403	2	#5	STR	12'-0"	25						
A204	2	#4	STR	10'-7"	14	A404	2	#5	STR	10'-7"	22						
A205	2	#4	STR	9'-3"	12	A405	2	#5	STR	9'-3"	19						
A206	2	#4	STR	7'-11"	11	A406	2	#5	STR	7'-11"	17						
A207	2	#4	STR	6'-7"	9	A407	2	#5	STR	6'-7"	14						
A208	2	#4	STR	5'-3"	7	A408	2	#5	STR	5'-3"	11						
A209	2	#4	STR	3'-10"	5	A409	2	#5	STR	3'-10"	8						
A210	2	#4	STR	2'-6"	3	A410	2	#5	STR	2'-6"	5						
													REINFORCING STEEL		9,068 LBS.		

STAGE II QUANTITIES			
CLASS A CONCRETE			
BARREL @	1.49	CY/FT	72.3
4 EDGE BEAMS			2.7
TOTAL			75.0
REINFORCING STEEL			
BARREL			9,068
TOTAL			9,068
CULVERT EXCAVATION		LUMP SUM	
FOUNDATION COND. MAT'L.		69 TONS	



SPLICE LENGTHS CHART		
BAR	SIZE	SPLICE LENGTH
B1	#4	1'-10"
C1	#4	1'-10"
A200	#4	1'-10"
A400	#5	2'-4"
S2	#6	2'-9"

LEFT END ELEVATION NORMAL TO SKEW

PROJECT NO. I-5987A
 ROBESON COUNTY
 STATION: 354+06.00 -L-

SHEET 6 OF 13

STATE OF NORTH CAROLINA
 DEPARTMENT OF TRANSPORTATION
 RALEIGH

DOUBLE 7 FT. X 7 FT.
 CONCRETE BOX CULVERT
 64° SKEW
 STAGE II

5/10/2022 | 10:32 AM EDT

DOCUMENT NOT CONSIDERED FINAL
 UNLESS ALL SIGNATURES COMPLETED

TGS ENGINEERS
 706 HILLSBOROUGH STREET
 SUITE 200
 RALEIGH, NC 27603
 PH (919) 773-8887
 CORP. LICENSE NO.: C-0275

REVISIONS						SHEET NO.	
NO.	BY:	DATE:	NO.	BY:	DATE:	C21-6	
1			3			TOTAL SHEETS 13	
2			4				

ASSEMBLED BY :	ZCS	DATE :	11/21
CHECKED BY :	MGC	DATE :	12/21
DRAWN BY :	PD	REV. 6/19	MAA/THC
CHECKED BY :	ARB		