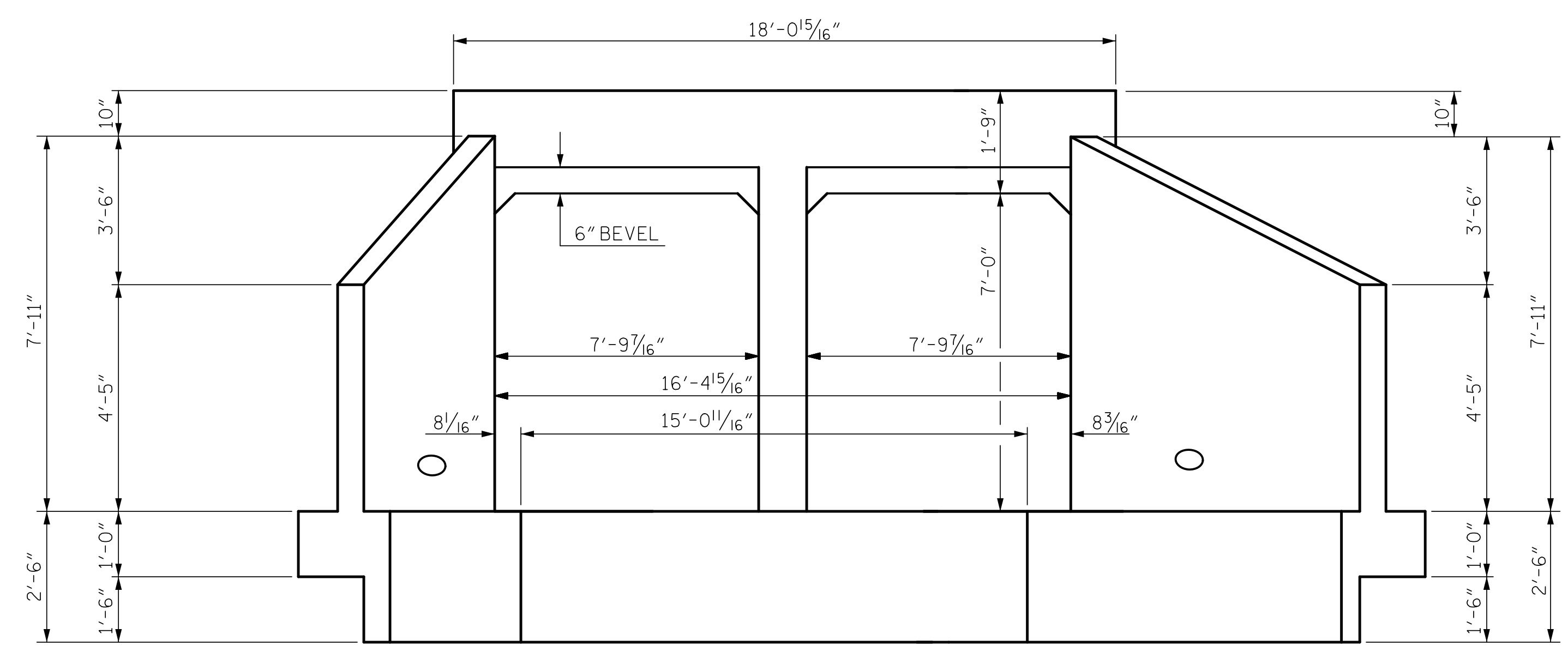
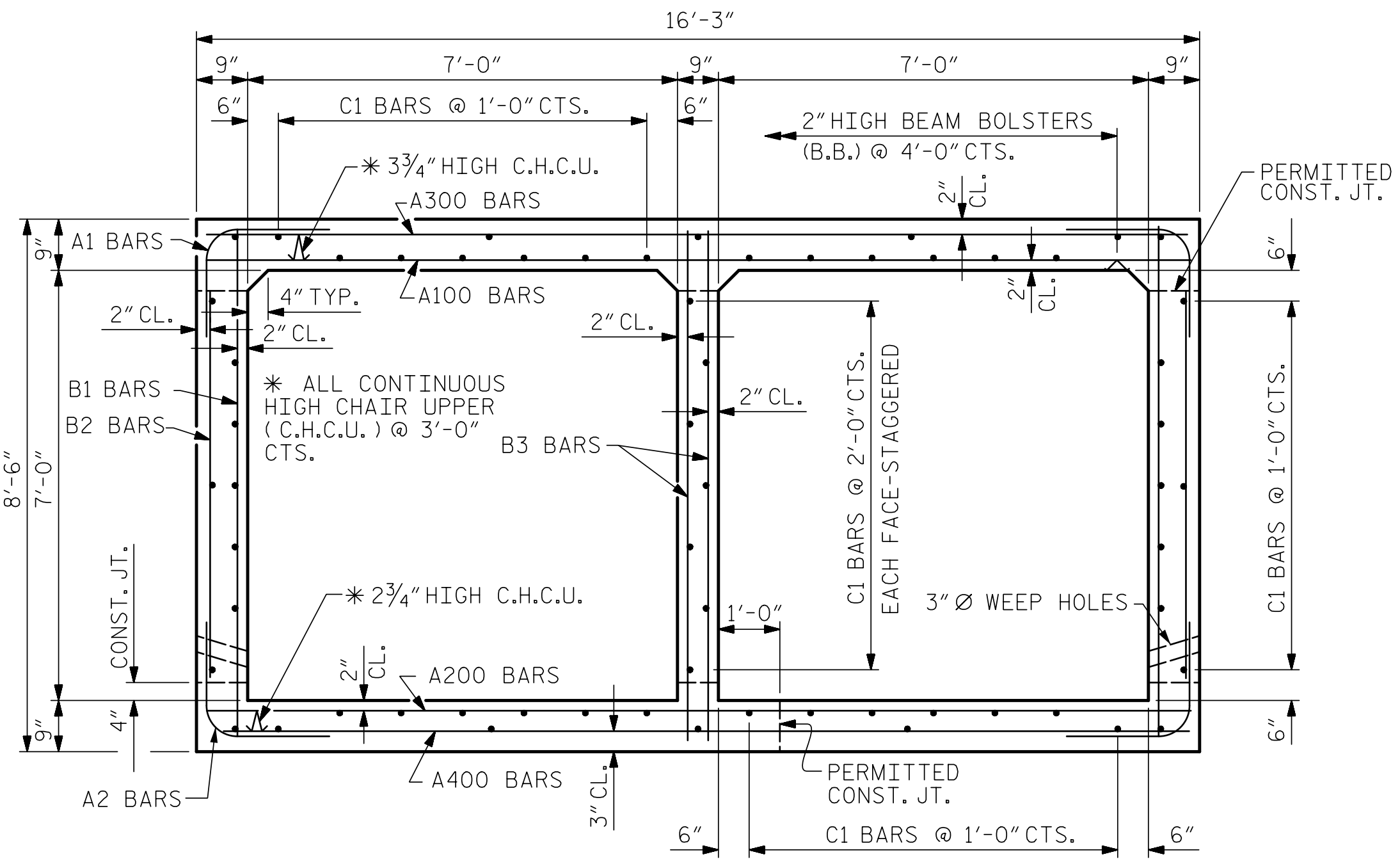


STAGE I BAR SCHEDULE																	
BAR	NO.	SIZE	TYPE	LENGTH	WEIGHT	BAR	NO.	SIZE	TYPE	LENGTH	WEIGHT	BAR	NO.	SIZE	TYPE	LENGTH	WEIGHT
A100	75	#4	STR	15'-10"	793	A300	75	#5	STR	15'-10"	1239	A1	170	#4	1	4'-10"	549
A101	2	#4	STR	14'-10"	20	A301	2	#5	STR	14'-10"	31	A2	170	#4	1	4'-5"	502
A102	2	#4	STR	13'-6"	18	A302	2	#5	STR	13'-6"	28						
A103	2	#4	STR	12'-2"	16	A303	2	#5	STR	12'-2"	25	B1	116	#4	STR	8'-0"	620
A104	2	#4	STR	10'-9"	14	A304	2	#5	STR	10'-9"	22	B2	170	#4	STR	6'-4"	719
A105	2	#4	STR	9'-5"	13	A305	2	#5	STR	9'-5"	20	B3	78	#4	STR	8'-0"	417
A106	2	#4	STR	8'-1"	11	A306	2	#5	STR	8'-1"	17						
A107	2	#4	STR	6'-9"	9	A307	2	#5	STR	6'-9"	14	C1	122	#4	STR	29'-9"	2425
A108	2	#4	STR	5'-5"	7	A308	2	#5	STR	5'-5"	11						
A109	2	#4	STR	4'-0"	5	A309	2	#5	STR	4'-0"	8	S2	12	#6	STR	17'-8"	318
A110	2	#4	STR	2'-8"	4	A310	2	#5	STR	2'-8"	6	S3	6	#8	STR	17'-8"	283
A200	75	#4	STR	15'-10"	793	A400	75	#5	STR	15'-10"	1239	G1	4	#5	STR	17'-8"	74
A201	2	#4	STR	14'-10"	20	A401	2	#5	STR	14'-10"	31						
A202	2	#4	STR	13'-6"	18	A402	2	#5	STR	13'-6"	28	D2	6	#6	STR	1'-4"	12
A203	2	#4	STR	12'-2"	16	A403	2	#5	STR	12'-2"	25	D3	6	#6	STR	2'-4"	21
A204	2	#4	STR	10'-9"	14	A404	2	#5	STR	10'-9"	22						
A205	2	#4	STR	9'-5"	13	A405	2	#5	STR	9'-5"	20						
A206	2	#4	STR	8'-1"	11	A406	2	#5	STR	8'-1"	17						
A207	2	#4	STR	6'-9"	9	A407	2	#5	STR	6'-9"	14						
A208	2	#4	STR	5'-5"	7	A408	2	#5	STR	5'-5"	11						
A209	2	#4	STR	4'-0"	5	A409	2	#5	STR	4'-0"	8						
A210	2	#4	STR	2'-8"	4	A410	2	#5	STR	2'-8"	6						
												REINFORCING STEEL		10,602 LBS			



INLET END ELEVATION NORMAL TO SKEW



RIGHT ANGLE SECTION OF BARREL

THERE ARE 61 "C" BARS IN SECTION OF BARREL.

BAR TYPE		
VERTICAL LEG		
①	6" R.	
	2'-2"	A1
	1'-9"	A2
	9/16"	
	9/16"	
	1'-10 1/2"	
	1'-10 1/2"	
DIMENSIONS ARE OUT TO OUT		
SPlice LENGTHS CHART		
BAR	SIZE	SPLICE LENGTH
B1	#4	1'-10"
A1	#4	1'-10"
A200	#4	1'-10"
A400	#5	2'-4"
S2	#6	2'-9"
S3	#8	3'-8"

STAGE I QUANTITIES	
CLASS A CONCRETE	
BARREL @ 1.49 CY/FT	86.4 C.Y.
WINGS, ETC.	16.9 C.Y.
EDGE BEAMS	1.3 C.Y.
SILLS	0.8 C.Y.
TOTAL	105.4 C.Y.
REINFORCING STEEL	
BARREL & SILLS	10,602 LBS.
WINGS, ETC.	944 LBS.
TOTAL	11,546 LBS.
CULVERT EXCAVATION	LUMP SUM
FOUNDATION COND. MAT'L.	83 TONS

PROJECT NO. I-5987A
ROBESON COUNTY
 STATION: 354+06.00 -L-

SHEET 3 OF 13

STATE OF NORTH CAROLINA
 DEPARTMENT OF TRANSPORTATION
 RALEIGH

DOUBLE 7 FT. X 7 FT.
 CONCRETE BOX CULVERT
 64° SKEW
 STAGE I

DOCUMENT NOT CONSIDERED FINAL
 UNLESS ALL SIGNATURES COMPLETED

REVISIONS

NO.	BY:	DATE:	NO.	BY:	DATE:
1			3		
2			4		

TGS ENGINEERS
 706 HILLSBOROUGH STREET
 SUITE 200
 RALEIGH, NC 27603
 PH (919) 773-8887
 CORP. LICENSE NO.: C-0275

5/10/2022 10:32 AM EDT

ASSEMBLED BY : ZCS DATE : 11/21
 CHECKED BY : MGC DATE : 12/21
 DRAWN BY : PD 10/90 REV. 6/19 MAA/THC
 CHECKED BY : ARB 10/90