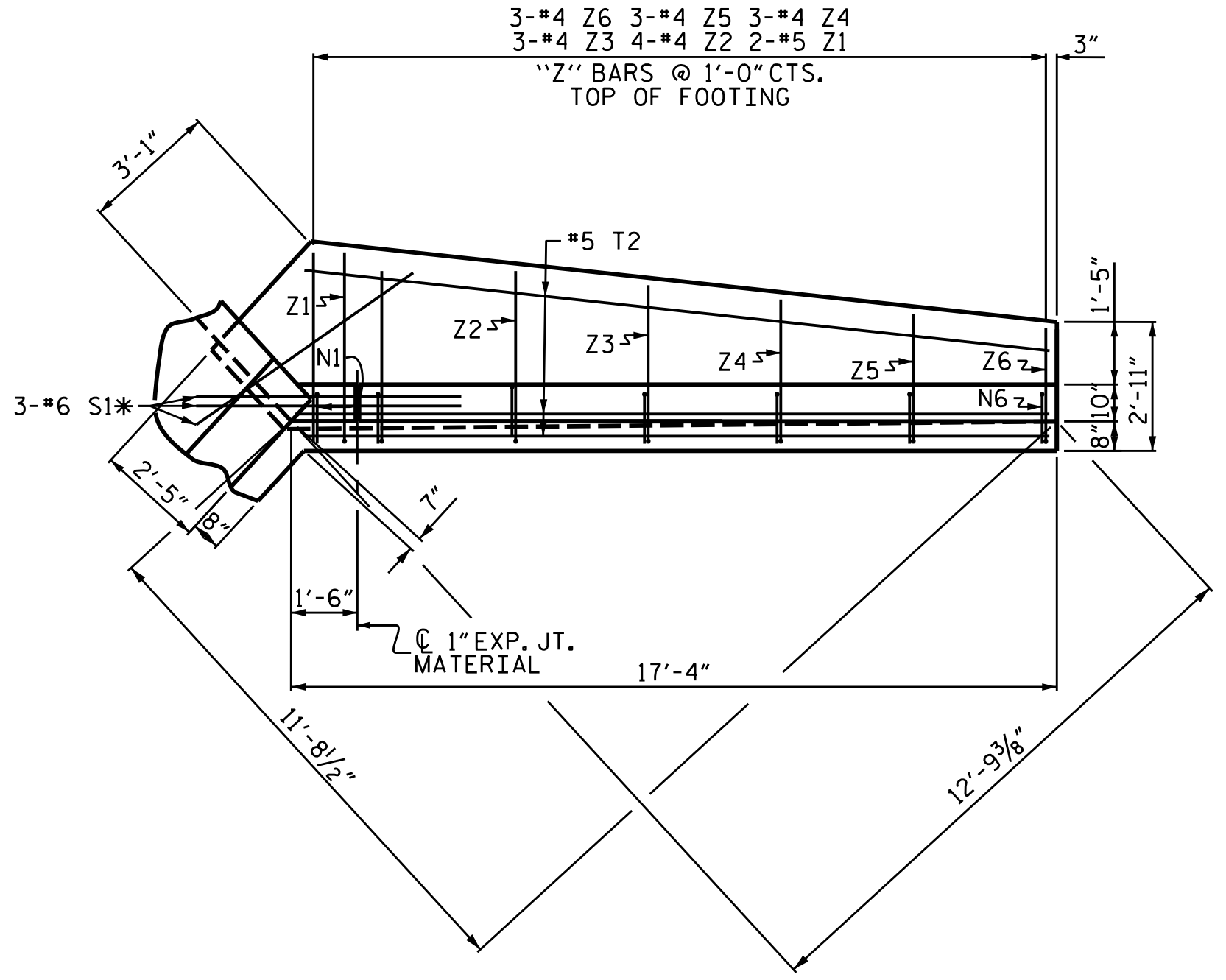
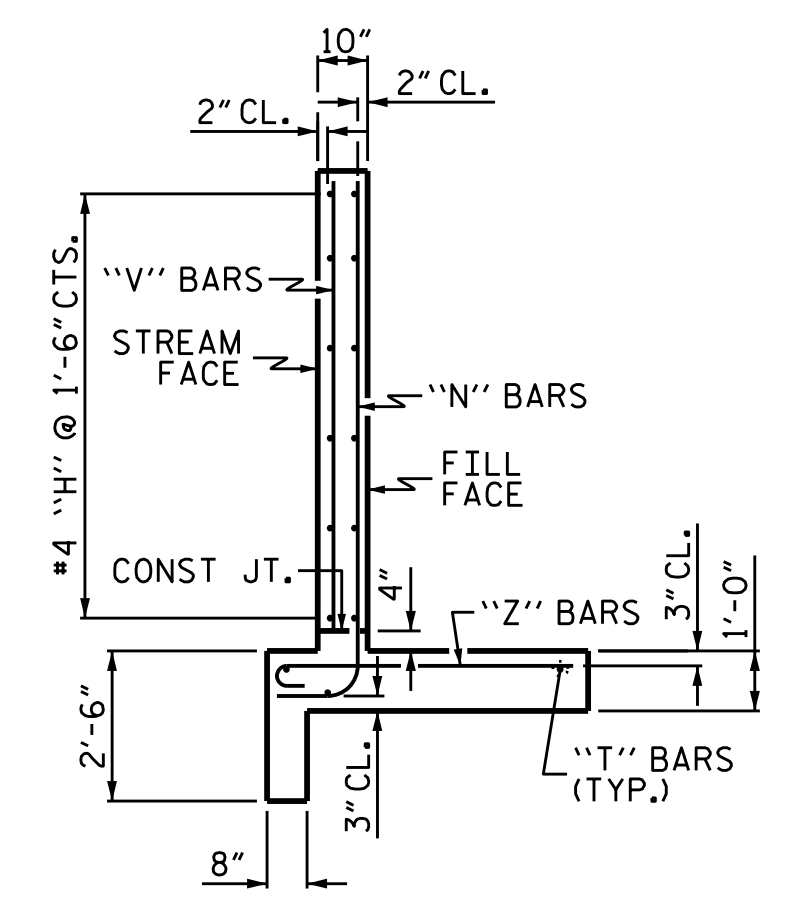


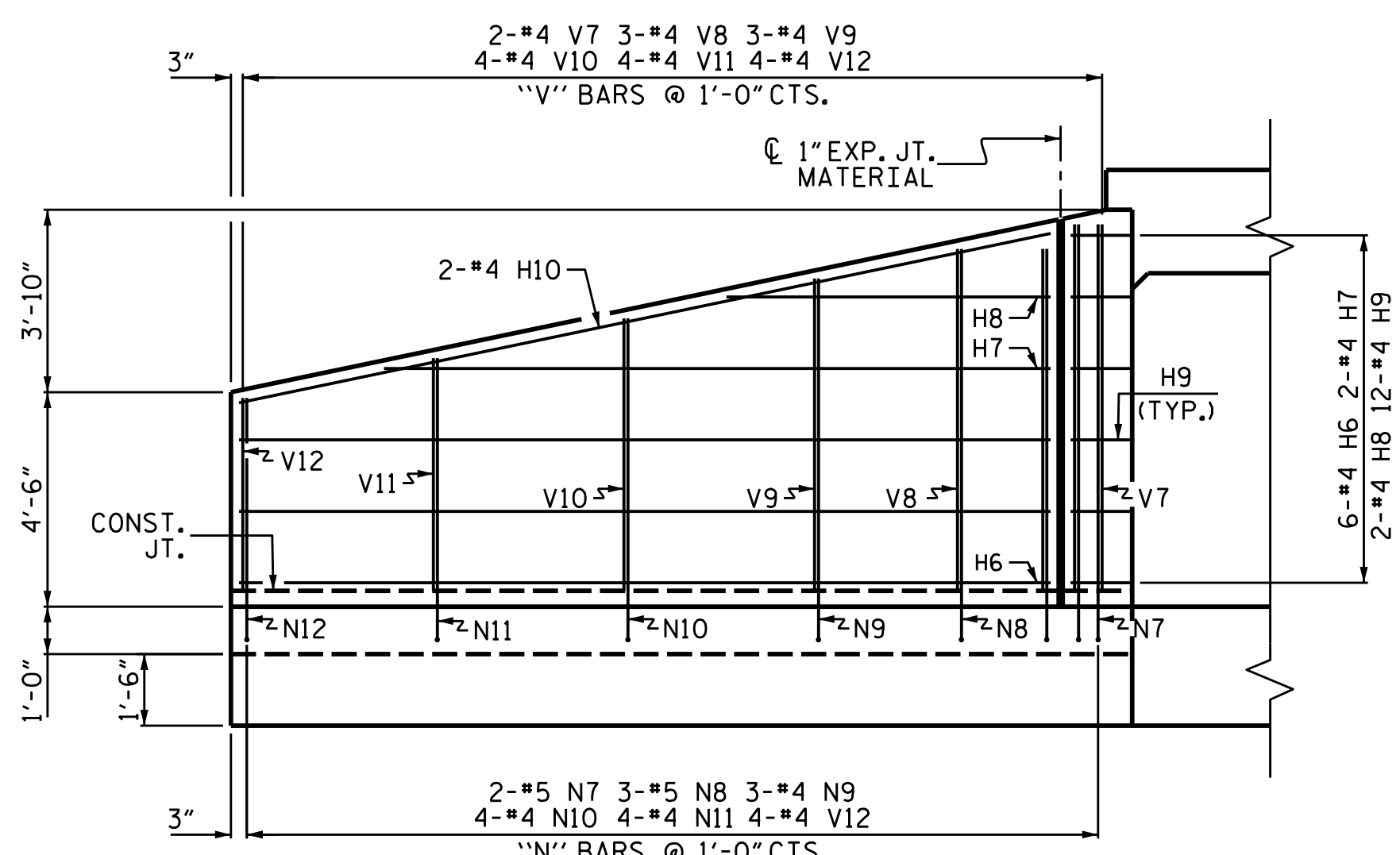
PLAN W1



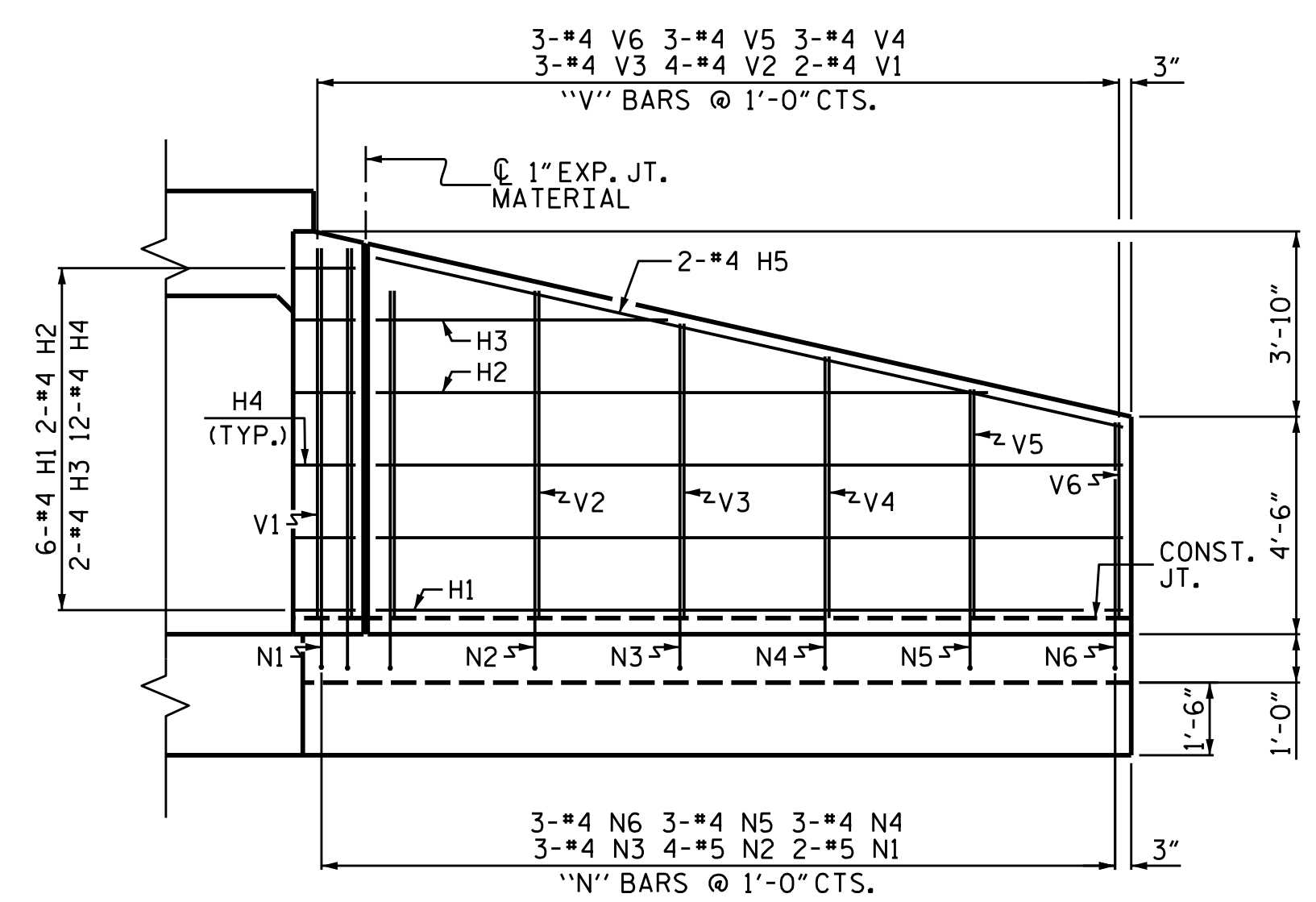
PLAN W2



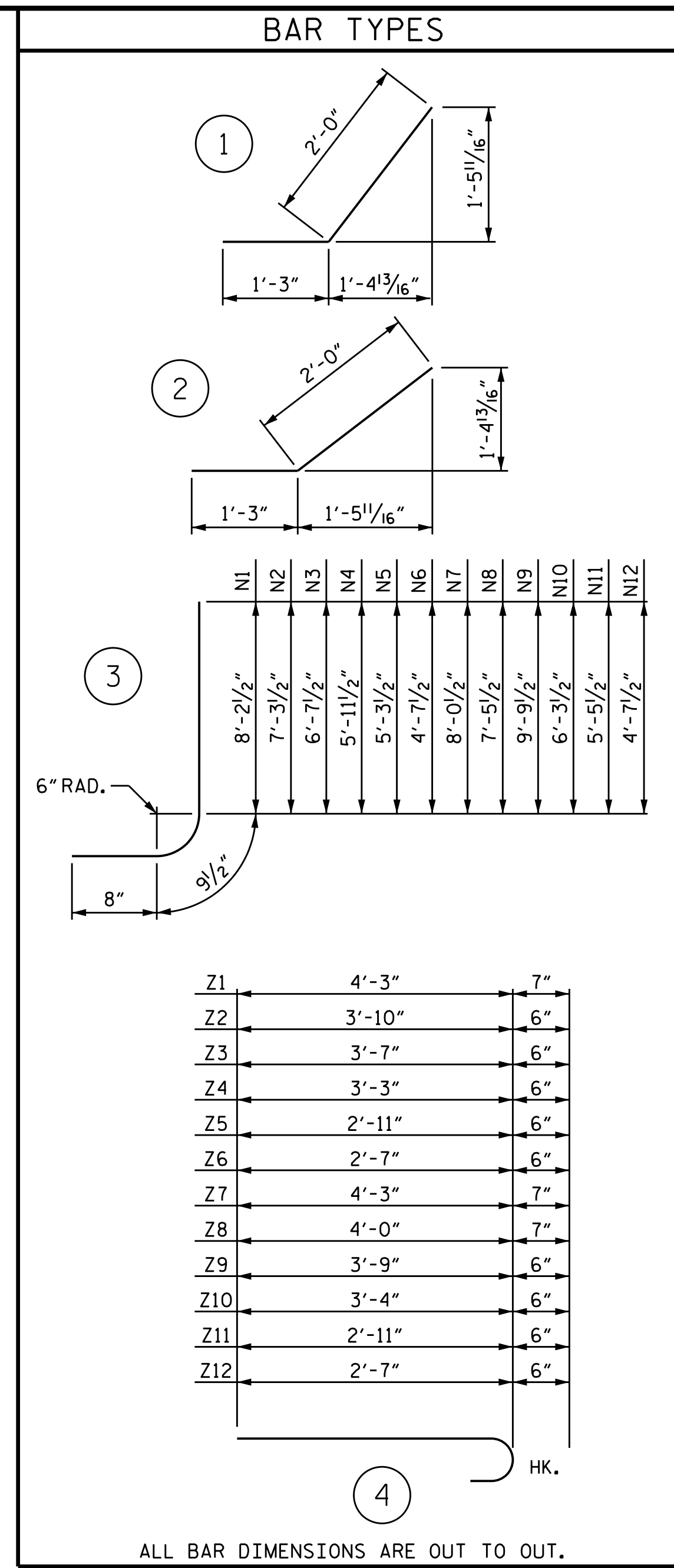
TYPICAL WING SECTION



ELEVATION W1



ELEVATION W2



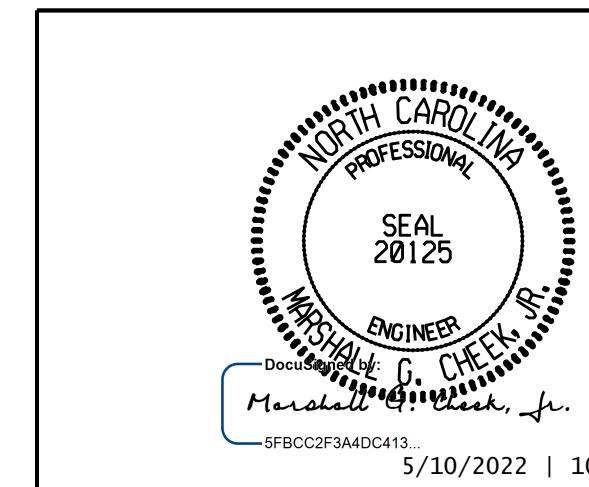
NOTES

A 3 FOOT STRIP OF FILTER FABRIC SHALL BE ATTACHED TO THE FILL FACE OF THE WING COVERING THE ENTIRE LENGTH OF THE EXPANSION JOINT.
G1 BARS IN HEADWALL ARE INCLUDED WITH THE BARREL REINFORCING STEEL.

BILL OF MATERIAL					
BAR	NO.	SIZE	TYPE	LENGTH	WEIGHT
H1	12	#4	STR	15'-5"	124
H2	4	#4	STR	12'-8"	34
H3	4	#4	STR	6'-0"	16
H4	24	#4	1	3'-3"	52
H5	4	#4	STR	15'-10"	42
H6	12	#4	STR	17'-0"	136
H7	4	#4	STR	14'-0"	37
H8	4	#4	STR	6'-9"	18
H9	24	#4	2	3'-3"	52
H10	4	#4	STR	17'-4"	46
N1	4	#5	3	9'-8"	40
N2	8	#5	3	8'-9"	73
N3	6	#4	3	8'-1"	32
N4	6	#4	3	7'-5"	30
N5	6	#4	3	6'-9"	27
N6	6	#4	3	6'-1"	24
N7	4	#5	3	9'-6"	40
N8	6	#5	3	8'-11"	56
N9	6	#4	3	8'-3"	33
N10	8	#4	3	7'-9"	41
N11	8	#4	3	6'-11"	37
N12	8	#4	3	6'-1"	33
S1	12	#6	STR	6'-0"	108
T1	6	#5	STR	18'-11"	118
T2	6	#5	STR	17'-4"	108
V1	4	#4	STR	7'-5"	20
V2	8	#4	STR	6'-6"	35
V3	6	#4	STR	5'-10"	23
V4	6	#4	STR	5'-2"	21
V5	6	#4	STR	4'-7"	18
V6	6	#4	STR	4'-0"	16
V7	4	#4	STR	7'-5"	20
V8	6	#4	STR	6'-9"	27
V9	6	#4	STR	6'-2"	25
V10	8	#4	STR	5'-8"	30
V11	8	#4	STR	4'-10"	26
V12	8	#4	STR	4'-0"	21
Z1	4	#5	4	4'-10"	20
Z2	8	#4	4	4'-4"	23
Z3	6	#4	4	4'-1"	16
Z4	6	#4	4	3'-9"	15
Z5	6	#4	4	3'-5"	14
Z6	6	#4	4	3'-1"	12
Z7	4	#5	4	4'-10"	20
Z8	6	#5	4	4'-7"	29
Z9	6	#4	4	4'-3"	17
Z10	8	#4	4	3'-10"	21
Z11	8	#4	4	3'-5"	18
Z12	8	#4	4	3'-1"	16

PROJECT NO. I-5987A
ROBESON COUNTY
 STATION: 24+79.00 -Y3-
 SHEET 10 OF 10

STATE OF NORTH CAROLINA
 DEPARTMENT OF TRANSPORTATION
 RALEIGH
WINGS FOR CONCRETE BOX CULVERT
 H = 7'-0" SLOPE = 3:1
 95°-00'-00" SKEW



5/10/2022 10:06 AM EDT
 DOCUMENT NOT CONSIDERED FINAL UNLESS ALL SIGNATURES COMPLETED
TGS ENGINEERS
 706 HILLSBOROUGH STREET
 SUITE 200
 RALEIGH, NC 27603
 PH (919) 773-8887
 CORP. LICENSE NO.: C-0275

REVISIONS						SHEET NO.
NO.	BY:	DATE:	NO.	BY:	DATE:	C14-10
1			3			TOTAL SHEETS
2			4			10

DRAWN BY: STM DATE: 10/21
 CHECKED BY: MGC DATE: 12/21
 DESIGN ENGINEER OF RECORD: STM DATE: 10/21