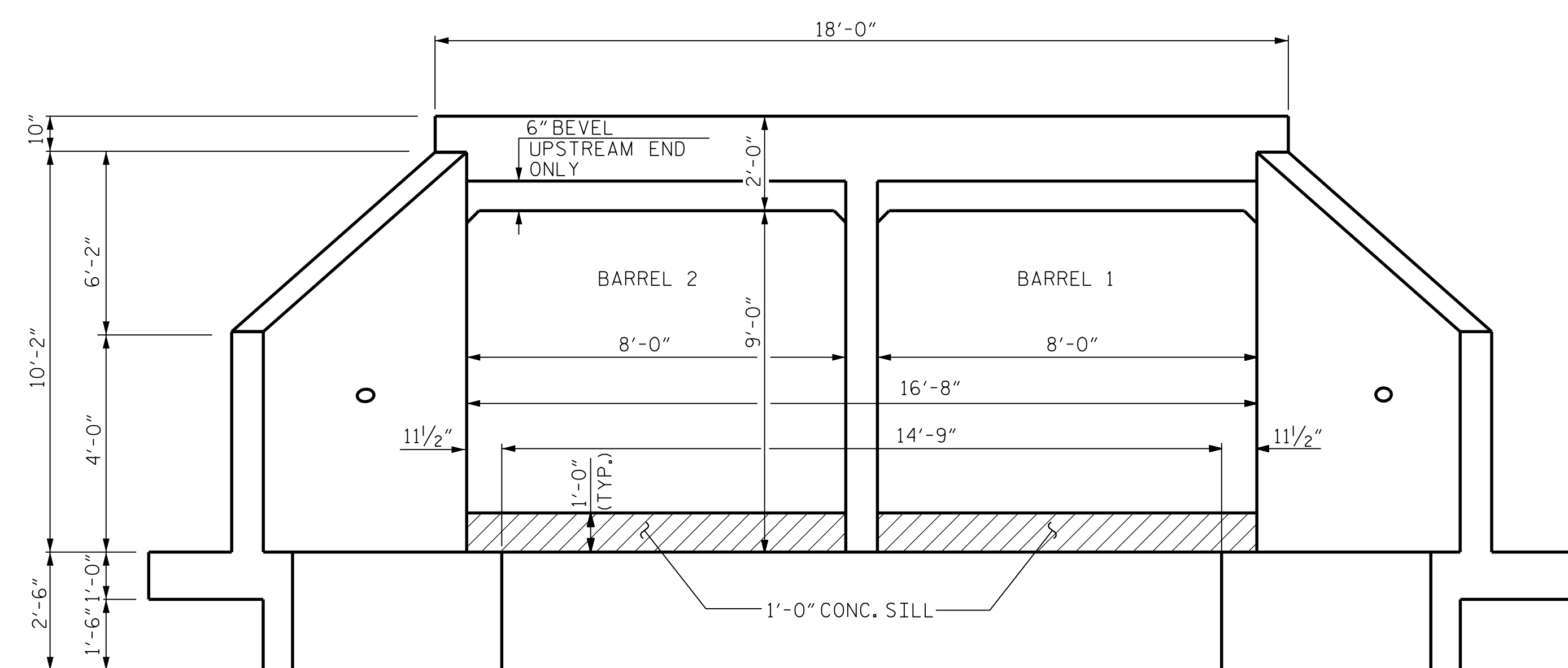
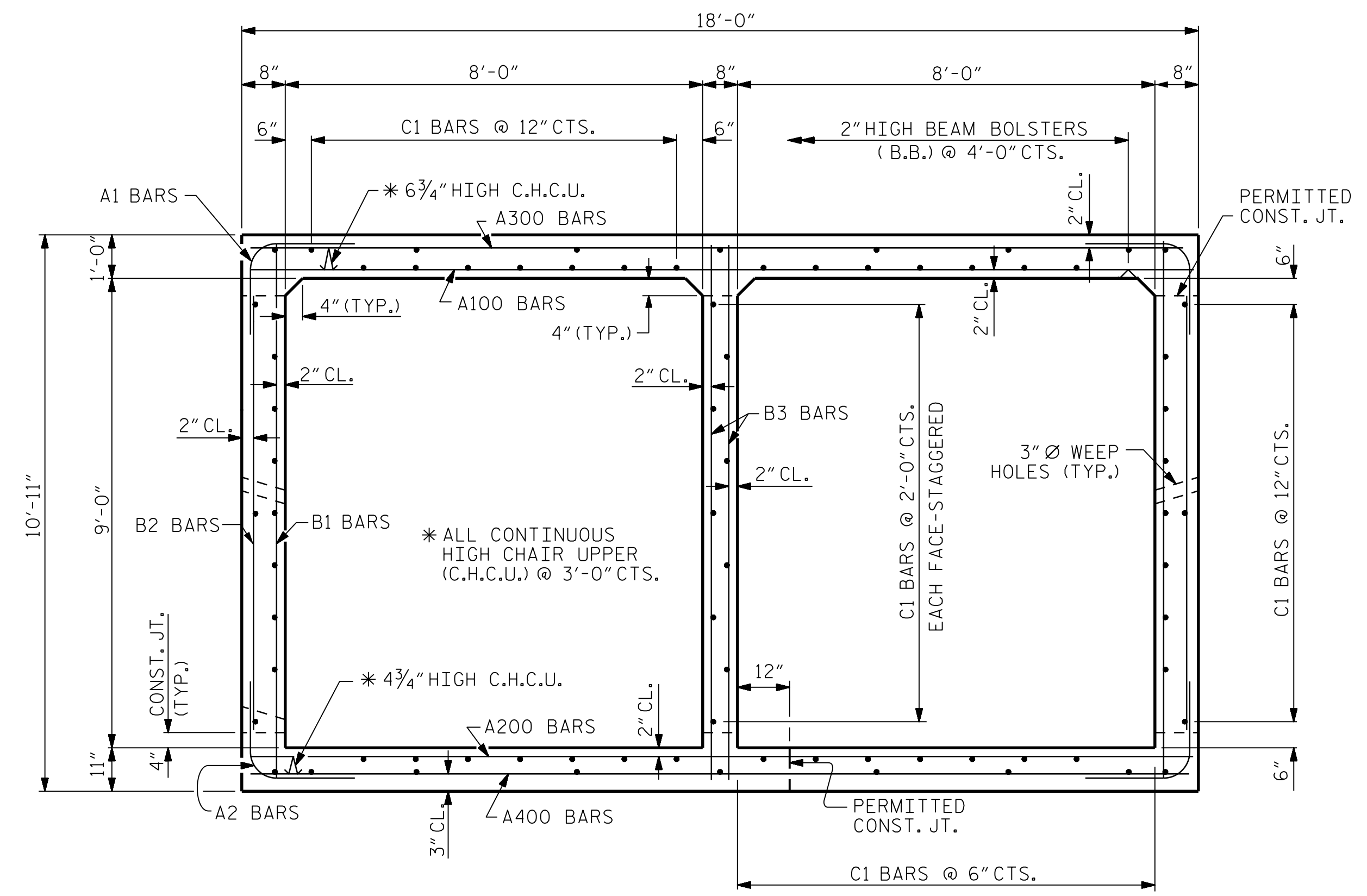


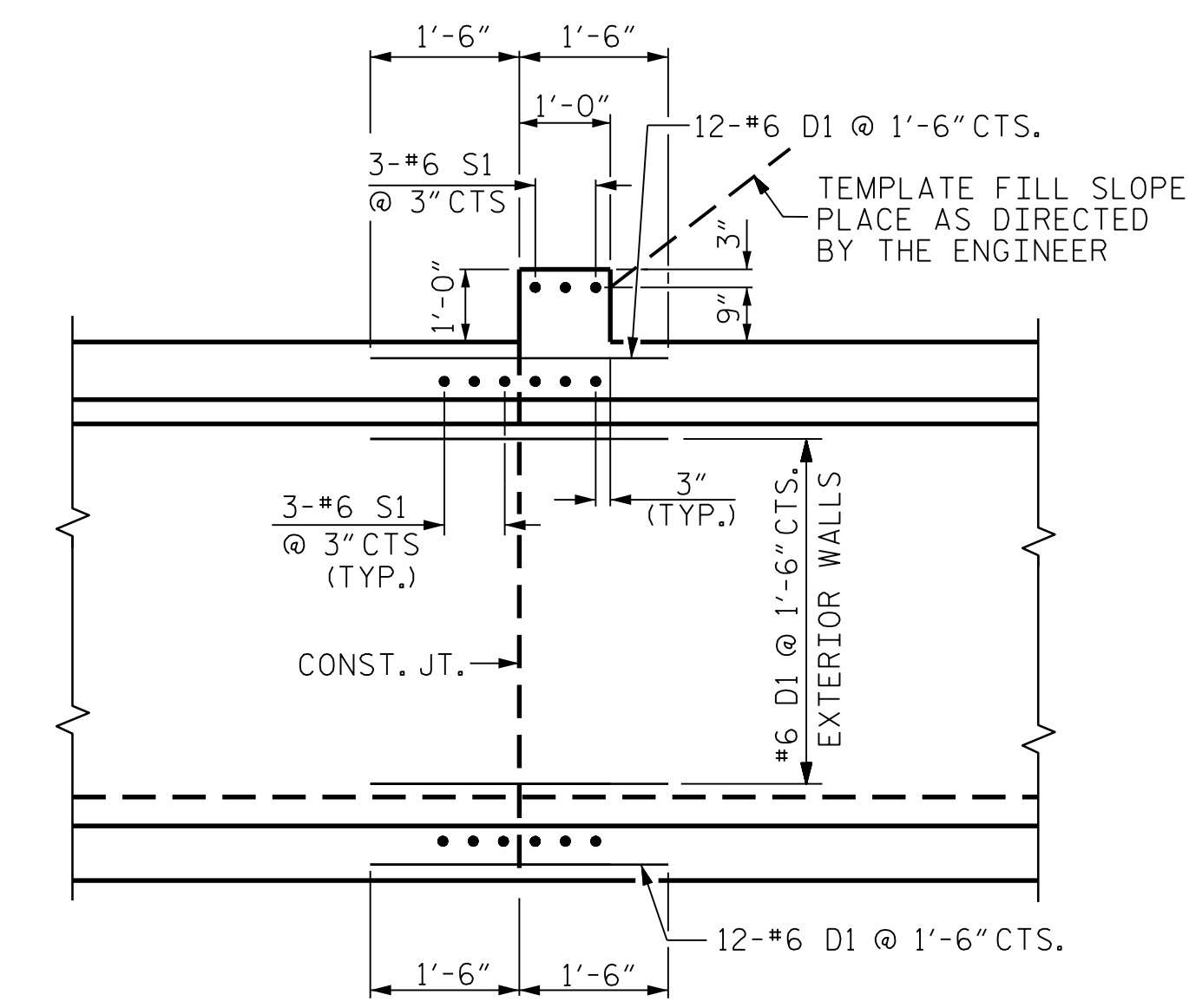
CULVERT SECTION NORMAL TO ROADWAY



INLET END ELEVATION NORMAL TO SKEW
OUTLET END ELEVATION SIMILAR BY ROTATION



RIGHT ANGLE SECTION OF BARREL
THERE ARE 75 C1 BARS IN SECTION OF BARREL.



DETAIL "A"

I HEREBY CERTIFY THESE PLANS ARE THE AS-BUILT PLANS

PROJECT NO. I-5987A
ROBESON COUNTY
STATION: 366+29.00 -L-

SHEET 2 OF 8

STATE OF NORTH CAROLINA
DEPARTMENT OF TRANSPORTATION
RALEIGH
BARREL STANDARD
DOUBLE 8 FT. X 9 FT. CONCRETE BOX CULVERT

DOCUMENT NOT CONSIDERED FINAL UNLESS ALL SIGNATURES COMPLETED

CDM Smith
CDM SMITH
5400 Glenwood Avenue, Suite 400
Raleigh, NC 27612-3228
NC COA No. F-1255

DRAWN BY: JJR DATE: 9/21
CHECKED BY: THF DATE: 12/21
DESIGN ENGINEER: VDK DATE: 12/21

DWG. No.

NORTH CAROLINA PROFESSIONAL SEAL 16301
ENGINEER
TING FANG
3/18/2022

REVISIONS						SHEET NO.	
NO.	BY:	DATE:	NO.	BY:	DATE:	C12-2	
1			3			TOTAL SHEETS 8	
2			4				