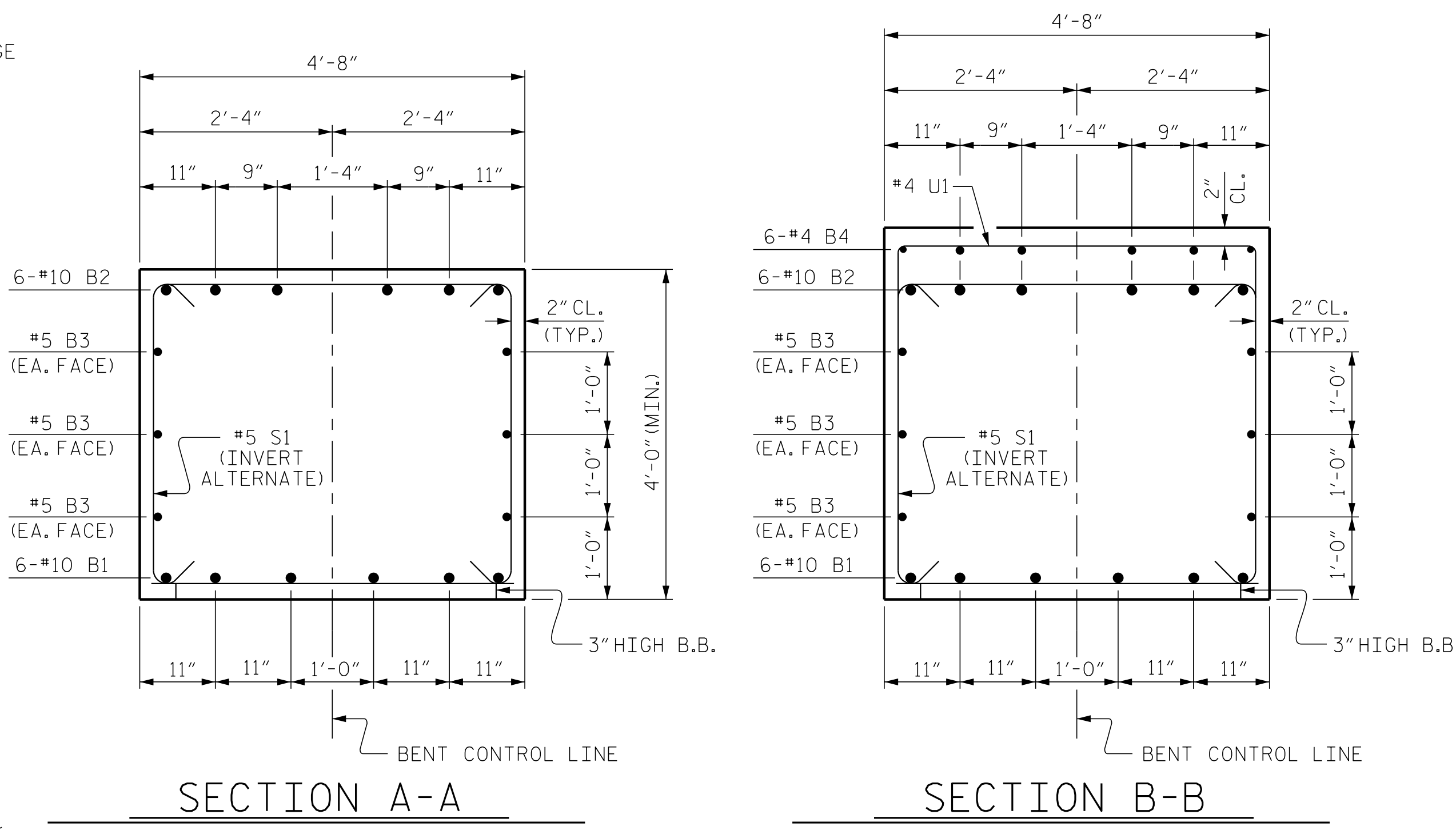
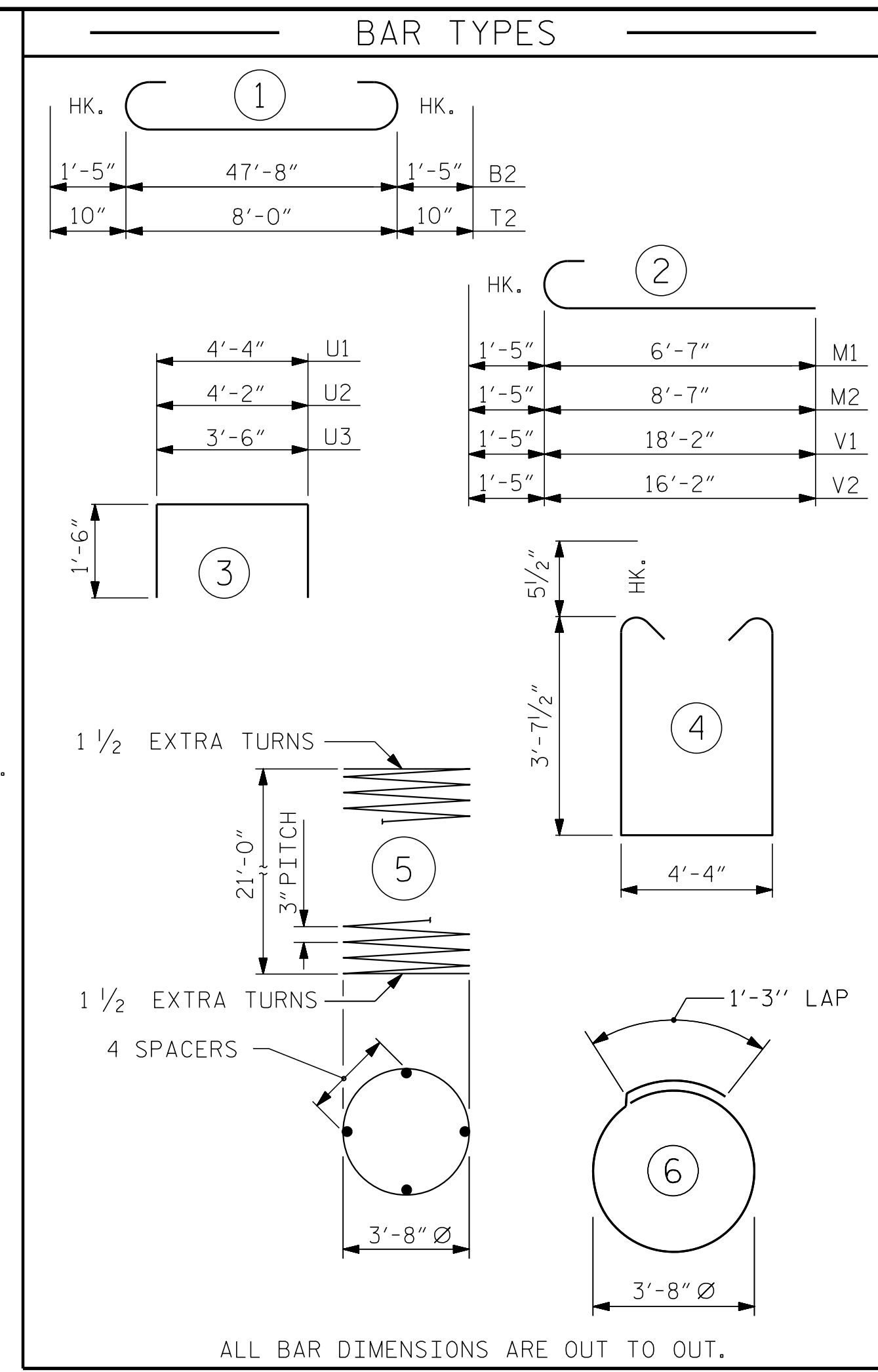


PILE SPICE DETAILS



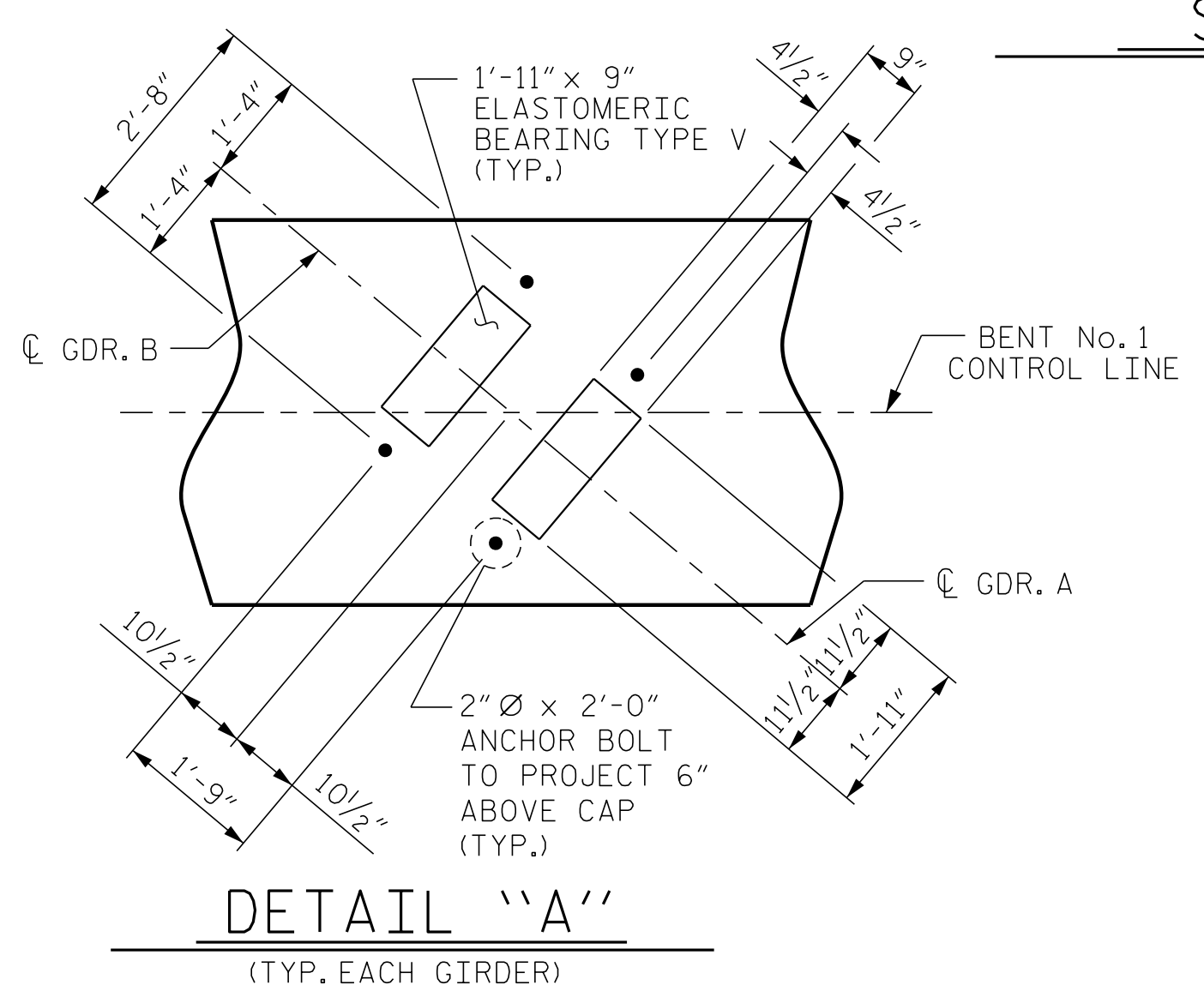
SECTION A-A

SECTION B-B

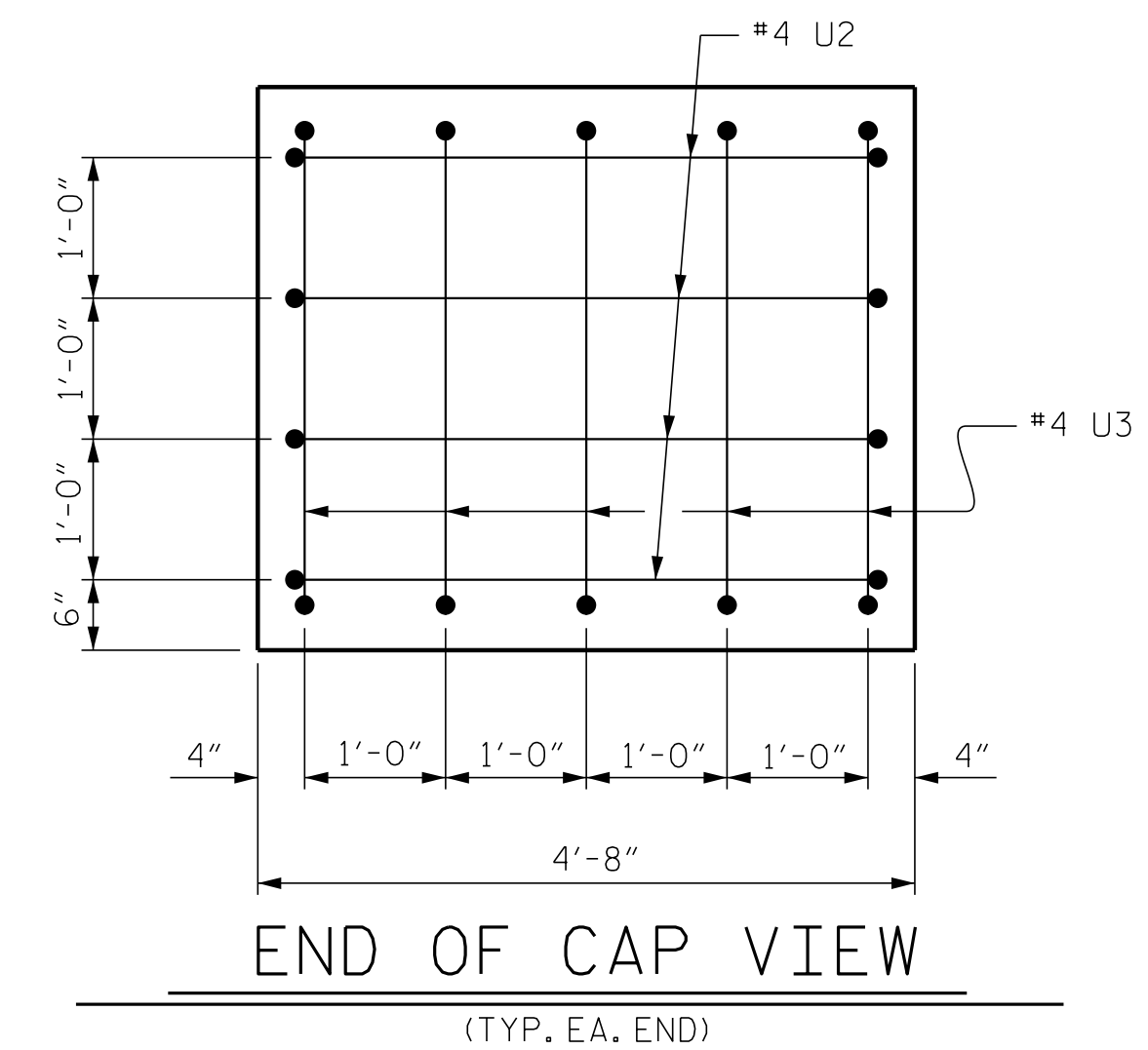


ALL BAR DIMENSIONS ARE OUT TO OUT.
 ** THE SP-1 SPIRAL REINFORCING STEEL SHALL BE W31 OR D-31 COLD DRAWN WIRE OR #5 PLAIN OR DEFORMED BAR.

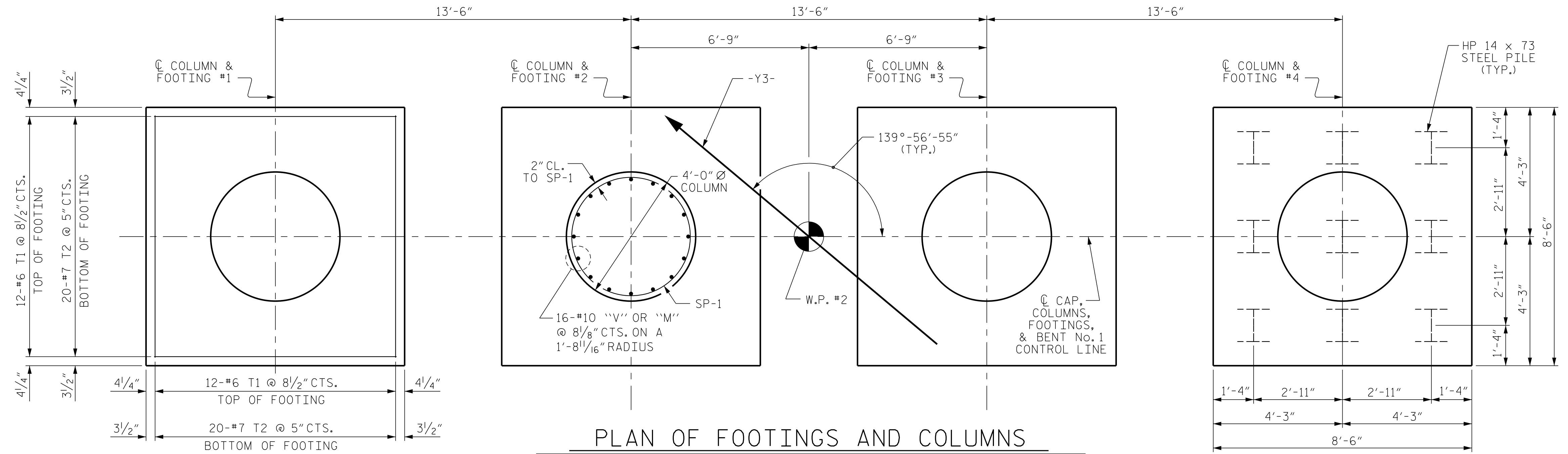
BILL OF MATERIAL					
BENT No. 1					
BAR	NO.	SIZE	TYPE	LENGTH	WEIGHT
B1	6	#10	STR	47'-10"	1,235
B2	6	#10	1	50'-6"	1,304
B3	6	#5	STR	47'-10"	299
B4	6	#4	STR	4'-8"	19
M1	32	#10	2	8'-0"	1,102
M2	32	#10	2	10'-0"	1,377
S1	72	#5	4	12'-6"	939
S2	44	#5	6	12'-10"	589
T1	96	#6	STR	8'-0"	1,154
T2	160	#7	1	9'-8"	3,161
U1	50	#4	3	7'-4"	245
U2	8	#4	3	7'-2"	38
U3	10	#4	3	6'-6"	43
V1	32	#10	2	19'-7"	2,697
V2	32	#10	2	17'-7"	2,421
REINFORCING STEEL					16,623 LBS.
SP-1	4	**	5	988'-3"	4,123
SPIRAL COLUMN REINFORCING STEEL					4,123 LBS.
CLASS A CONCRETE BREAKDOWN					
POUR #1 FOOTINGS					37.5 C.Y.
POUR #2 COLUMNS					38.6 C.Y.
POUR #3 CAP					34.2 C.Y.
TOTAL CLASS A CONCRETE					110.3 C.Y.
HP 14 X 73 STEEL PILES					
NO: 36					LIN. FT.= 2,880
FOUNDATION EXCAVATION					LUMP SUM
PILE DRIVING EQUIPMENT SETUP FOR HP 14 X 73 STEEL PILES					36 EA.



DETAIL "A" (TYP. EACH GIRDER)



END OF CAP VIEW (TYP. EA. END)

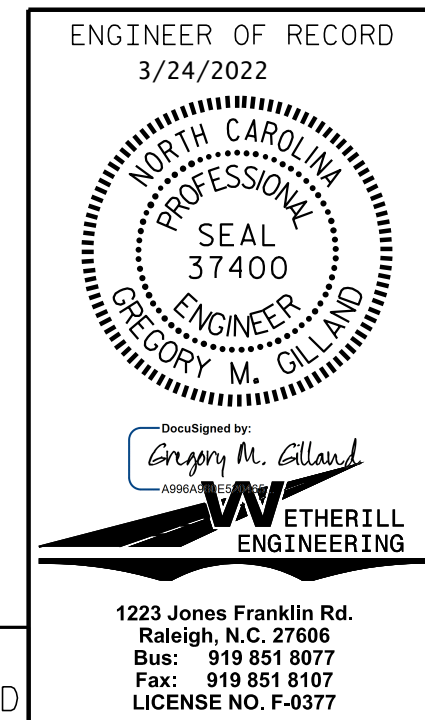


PLAN OF FOOTINGS AND COLUMNS

PILE PLACEMENT, REINFORCING STEEL, DIMENSIONS AND DETAILS ARE TYPICAL FOR EACH FOOTING AND COLUMN.

NOTES:
 STIRRUPS IN CAP MAY BE SHIFTED AS NECESSARY TO CLEAR ANCHOR BOLTS.
 HOOKS ON "V" BARS MAY BE TURNED AS NECESSARY FOR PLACING REINFORCING STEEL.
 LONGITUDINAL COLUMN REINFORCING STEEL SHALL BE SPLICED USING MECHANICAL BUTT SPLICES. NO LAP SPLICES ALLOWED. MECHANICAL BUTT SPLICES SHALL BE IN ACCORDANCE WITH THE STANDARD SPECIFICATIONS AND SUBMITTED FOR APPROVAL. ADJACENT SPLICES SHALL BE STAGGERED AT 2'-0". NO EXTRA PAYMENT WILL BE MADE FOR USING MECHANICAL BUTT SPLICES OR MODIFYING BAR LENGTHS. THE COST WILL BE INCIDENTAL TO REINFORCING STEEL.

PROJECT NO. I-5987A
 ROBESON COUNTY
 STATION: 30+04.11 -Y3-
 SHEET 2 OF 2



DEPARTMENT OF TRANSPORTATION					
RALEIGH					
SUBSTRUCTURE					
BENT No. 1					
REVISIONS					
NO.	BY:	DATE:	NO.	BY:	DATE:
1			3		
2			4		

DRAWN BY: D. HODGE DATE: 10/21
 CHECKED BY: G. GILLAND DATE: 10/21

DOCUMENT NOT CONSIDERED FINAL UNLESS ALL SIGNATURES COMPLETED

SHEET NO. S3-23
 TOTAL SHEETS 29

PA-202 121331.02 I-5987A BridgeStructures.DGN\401_001_I5987A_SMU_BT_001.dgn
 3/17/2022 5:14:07 PM