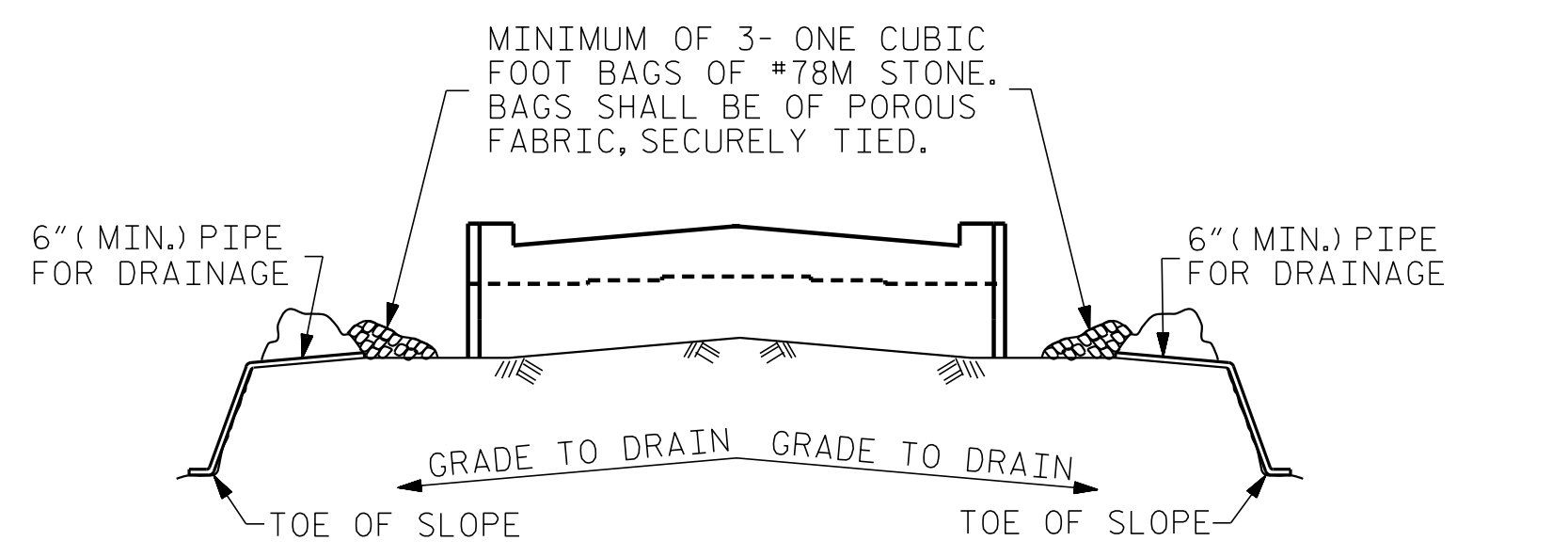


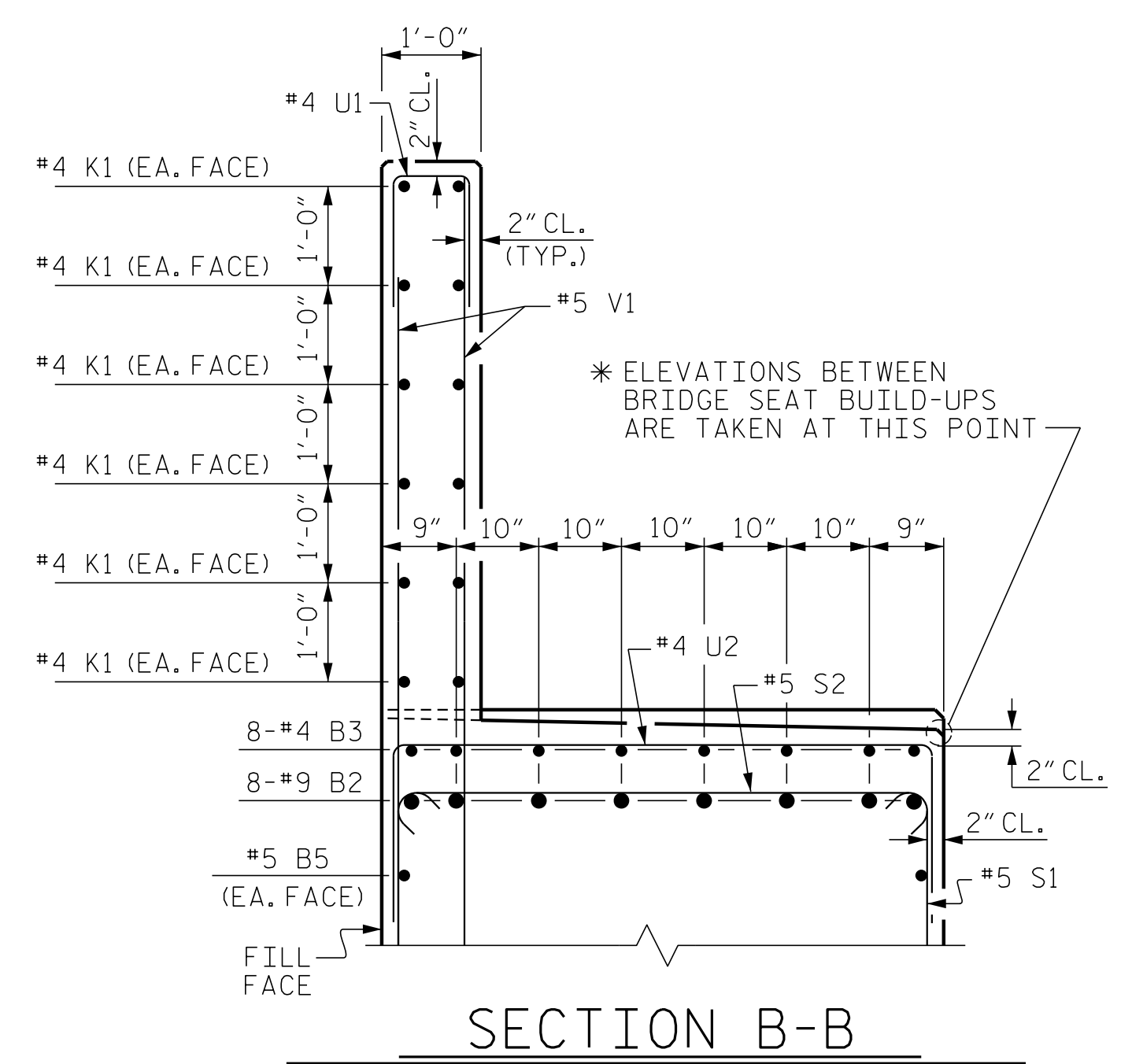
| BILL OF MATERIAL | | | | | |
|---|------|------|--------|-----------|------------|
| END BENT No. 1 | | | | | |
| BAR NO. | SIZE | TYPE | LENGTH | WEIGHT | |
| B1 | 16 | #9 | 1 | 35'-2" | 1,913 |
| B2 | 16 | #9 | 1 | 35'-9" | 1,945 |
| B3 | 8 | #4 | STR | 13'-4" | 71 |
| B4 | 16 | #4 | STR | 19'-7" | 209 |
| B5 | 12 | #5 | STR | 33'-5" | 418 |
| B6 | 8 | #4 | STR | 33'-2" | 177 |
| B7 | 16 | #4 | STR | 5'-4" | 57 |
| H1 | 32 | #5 | 3 | 12'-1" | 403 |
| H2 | 32 | #5 | 2 | 12'-1" | 403 |
| K1 | 24 | #4 | STR | 33'-2" | 532 |
| K2 | 8 | #4 | STR | 5'-4" | 29 |
| S1 | 72 | #5 | 5 | 13'-6" | 1,014 |
| S2 | 72 | #5 | 4 | 6'-3" | 469 |
| S3 | 28 | #4 | 6 | 7'-7" | 142 |
| U1 | 52 | #4 | 7 | 3'-8" | 127 |
| U2 | 28 | #4 | 7 | 8'-4" | 156 |
| V1 | 104 | #5 | STR | 9'-4" | 1,012 |
| V2 | 36 | #4 | STR | 11'-6" | 277 |
| V3 | 36 | #4 | STR | 11'-1" | 267 |
| REINFORCING STEEL | | | | | 9,621 LBS. |
| CLASS A CONCRETE BREAKDOWN | | | | | |
| POUR #1 CAP & LOWER PART OF WINGS | | | | 58.9 C.Y. | |
| POUR #2 BACKWALL AND UPPER PART OF WINGS | | | | 20.4 C.Y. | |
| TOTAL CLASS A CONCRETE | | | | 79.3 C.Y. | |
| HP 14 X 73 STEEL PILES | | | | | |
| NO: 7 | | | | 595 L.F. | |
| PILE DRIVING EQUIPMENT SETUP FOR HP 14 X 73 STEEL PILES | | | | | 7 EA. |



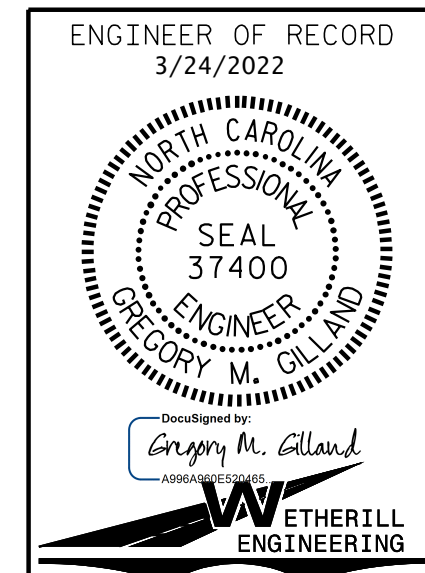
BAGGED STONE AND PIPE SHALL BE PLACED IMMEDIATELY AFTER COMPLETION OF END BENT EXCAVATION. PIPE MAY BE EITHER CONCRETE, CORRUGATED STEEL, CORRUGATED ALUMINUM ALLOY, OR CORRUGATED PLASTIC. PERFORATED PIPE WILL NOT BE ALLOWED.

BAGGED STONE SHALL REMAIN IN PLACE UNTIL THE ENGINEER DIRECTS THAT IT BE REMOVED. THE CONTRACTOR SHALL REMOVE AND DISPOSE OF SILT ACCUMULATIONS AT BAGGED STONE WHEN SO DIRECTED BY THE ENGINEER. BAGS SHALL BE REMOVED AND REPLACED WHENEVER THE ENGINEER DETERMINES THAT THEY HAVE DETERIORATED AND LOST THEIR EFFECTIVENESS.

NO SEPARATE PAYMENT WILL BE MADE FOR THIS WORK AND THE ENTIRE COST OF THIS WORK SHALL BE INCLUDED IN THE UNIT CONTRACT PRICE BID FOR THE SEVERAL PAY ITEMS.



PROJECT NO. I-5987A
ROBESON COUNTY
 STATION: 30+04.11 -Y3-
 SHEET 3 OF 3



STATE OF NORTH CAROLINA
 DEPARTMENT OF TRANSPORTATION
 RALEIGH

**SUBSTRUCTURE
 END BENT No. 1**

| REVISIONS | | | | | |
|-----------|-----|-------|-----|-----|-------|
| NO. | BY: | DATE: | NO. | BY: | DATE: |
| 1 | | | 3 | | |
| 2 | | | 4 | | |

SHEET NO. S3-21
 TOTAL SHEETS 29

DRAWN BY: D. HODGE DATE: 9/21
 CHECKED BY: G. GILLAND DATE: 11/21

DOCUMENT NOT CONSIDERED FINAL
 UNLESS ALL SIGNATURES COMPLETED

1223 Jones Franklin Rd.
 Raleigh, N.C. 27606
 Bus: 919 851 8077
 Fax: 919 851 8107
 LICENSE NO. F-0377

P:\2021\21331.02_I-5987A BridgeStructures\DWG\401_001_I5987A_SMU_LEB_001.dgn
 3/8/2022 1:44:34 PM