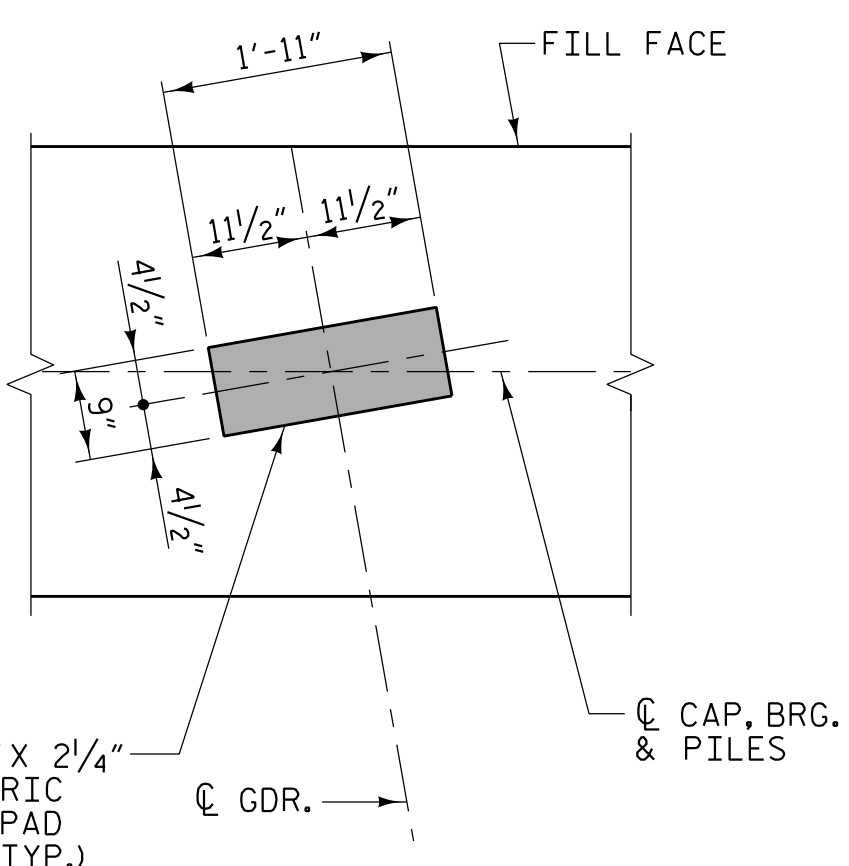


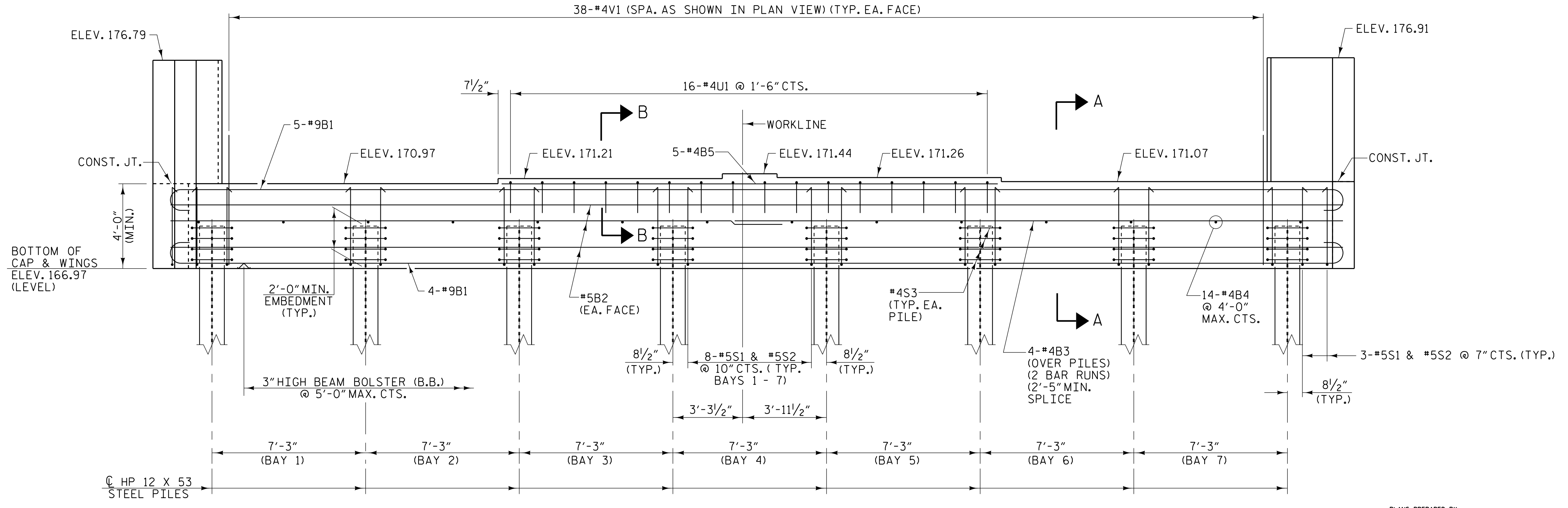
PLAN

NOTES

- #4V1 BARS MAY BE SHIFTED SLIGHTLY TO AVOID STIRRUPS IN THE CAP.
- THE TOP SURFACE OF THE END BENT CAP AND WINGS (POUR 1), EXCLUDING THE BEARING AREA, SHALL BE RAKED TO A DEPTH OF 1/4".
- \* -WINGWALL EXTENSION DISTANCE TO BE FIELD ADJUSTED AS REQUIRED TO PROVIDE FOR A 1" EXP. JT. BETWEEN THE MSE WALL COPING AND THE EXTENDED WINGWALL.
- FOR SECTION A-A AND SECTION B-B, SEE SHEET 3 OF 3.
- SEE "GENERAL DRAWING FOUNDATION LAYOUT" FOR ADDITIONAL NOTES FOR DRIVING PILES.
- FOR TEMPORARY DRAINAGE AT END BENT DETAIL SEE "SUBSTRUCTURE INTEGRAL END BENT 1" SHEET 3 OF 3.
- FOR PILE SPLICE DETAILS, SEE "SUBSTRUCTURE INTEGRAL END BENT 2" SHEET 3 OF 3.



DETAIL "A"  
(TYP. EACH GIRDER)



ELEVATION

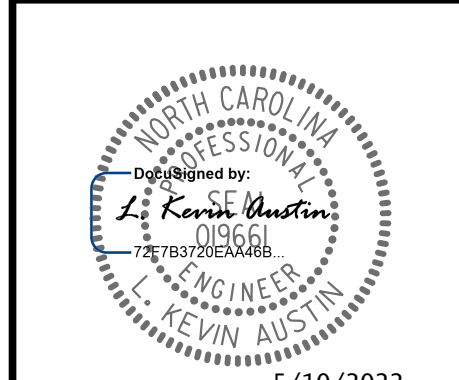
PROJECT NO. I-5987A  
ROBESON COUNTY  
STATION: 41+19.02 -Y1A- POT

SHEET 1 OF 3

STATE OF NORTH CAROLINA  
DEPARTMENT OF TRANSPORTATION  
RALEIGH

SUBSTRUCTURE  
INTEGRAL END BENT 2

PLANS PREPARED BY:  
**NV5**  
NV5 ENGINEERS & CONSULTANTS, INC.  
3300 REGENCY PARKWAY, SUITE 100  
CARY, NC 27518  
P: 919.851.1912 www.nv5.com  
NC License # F-1333



REVISIONS						SHEET NO.
NO.	BY:	DATE:	NO.	BY:	DATE:	S2-26
1			3			TOTAL SHEETS
2			4			31

DRAWN BY : W. B. ALLEN DATE : 11/21  
CHECKED BY : G. F. WILSON DATE : 11/21  
DESIGN ENGINEER OF RECORD: L. K. AUSTIN DATE : 12/21

DOCUMENT NOT CONSIDERED FINAL  
UNLESS ALL SIGNATURES COMPLETED

5/5/2022 10:05 PM R:\Structures\I-5987A (Y1A)\5987A\_SMU E4\_170054.dgn