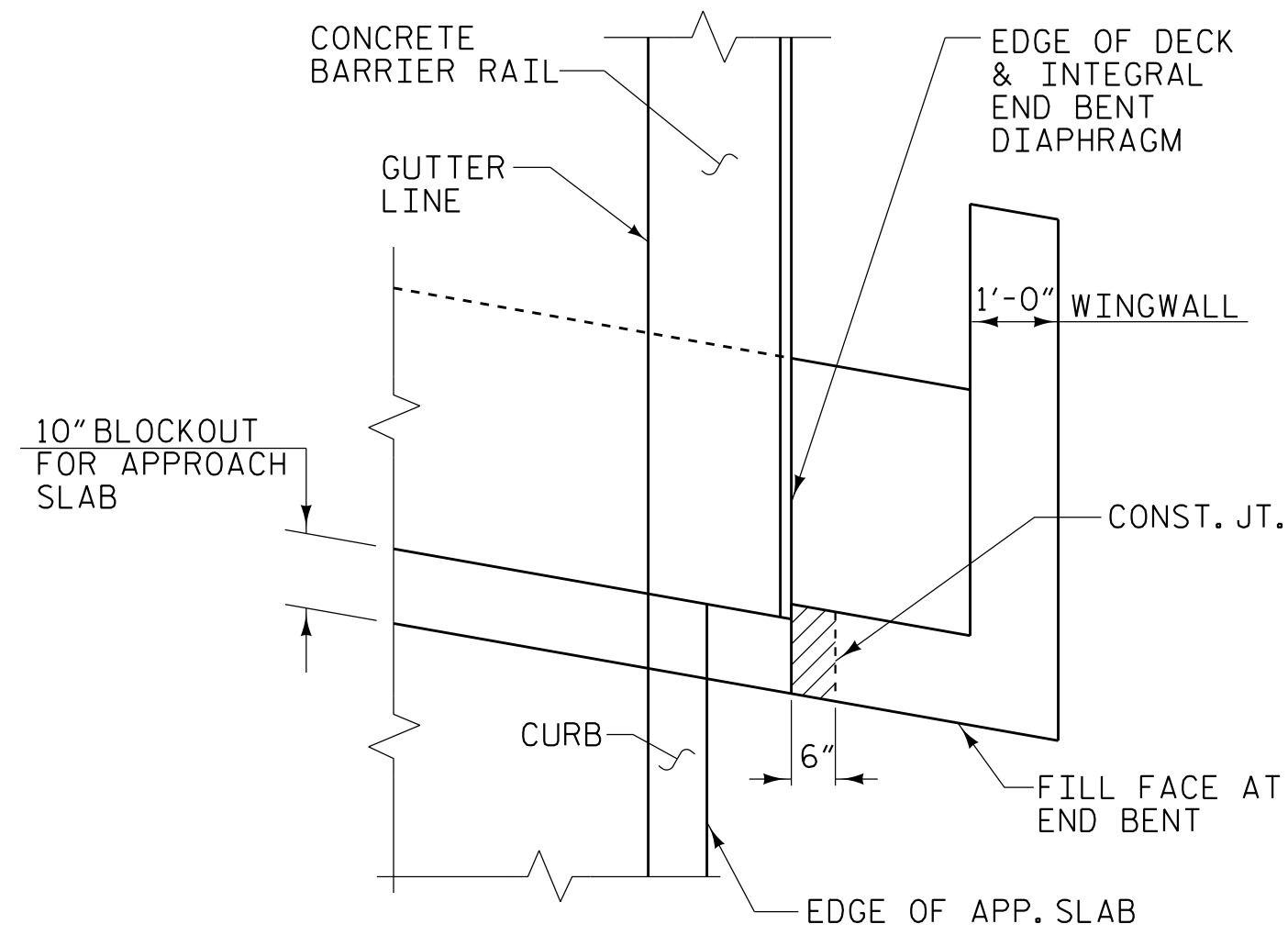


BAGGED STONE AND PIPE SHALL BE PLACED IMMEDIATELY AFTER COMPLETION OF END BENT EXCAVATION. PIPE MAY BE EITHER CONCRETE, CORRUGATED STEEL, CORRUGATED ALUMINUM ALLOY, OR CORRUGATED PLASTIC. PERFORATED PIPE WILL NOT BE ALLOWED.

BAGGED STONE SHALL REMAIN IN PLACE UNTIL THE ENGINEER DIRECTS THAT IT BE REMOVED. THE CONTRACTOR SHALL REMOVE AND DISPOSE OF SILT ACCUMULATIONS AT BAGGED STONE WHEN SO DIRECTED BY THE ENGINEER. BAGS SHALL BE REMOVED AND REPLACED WHENEVER THE ENGINEER DETERMINES THAT THEY HAVE DETERIORATED AND LOST THEIR EFFECTIVENESS.

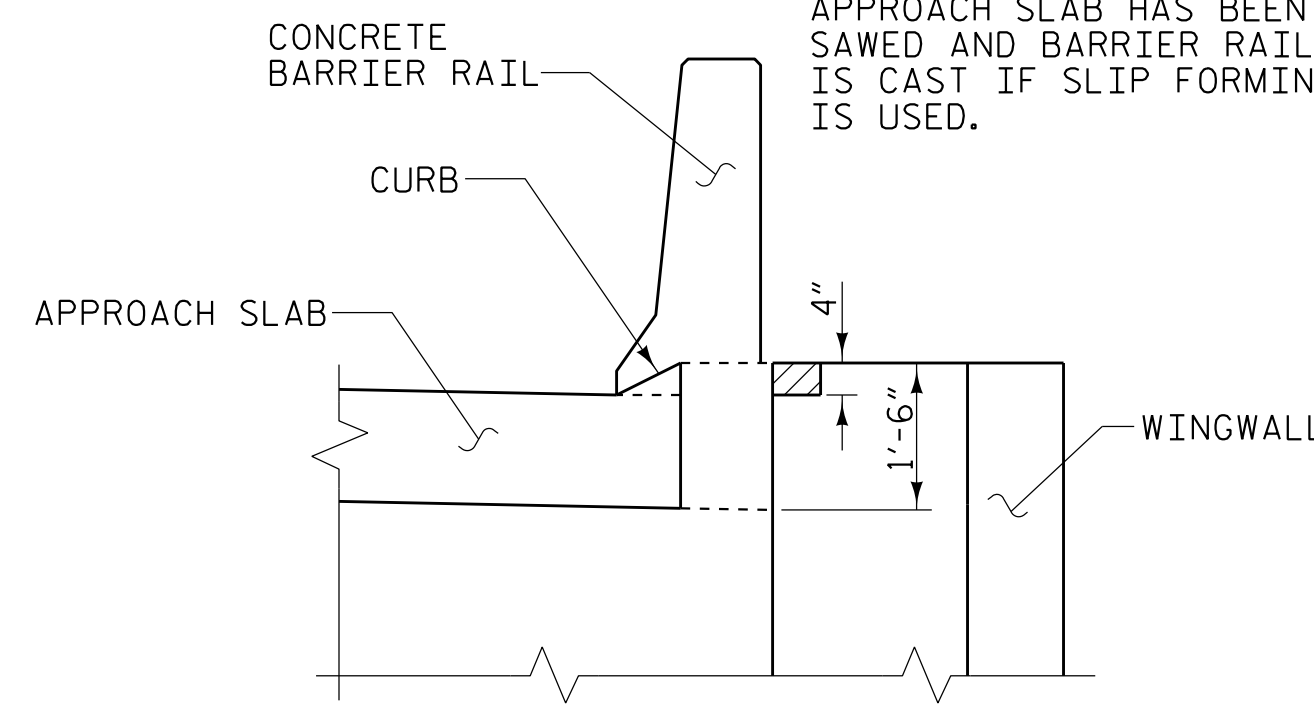
NO SEPARATE PAYMENT WILL BE MADE FOR THIS WORK AND THE ENTIRE COST OF THIS WORK SHALL BE INCLUDED IN THE UNIT CONTRACT PRICE BID FOR THE SEVERAL PAY ITEMS.

TEMPORARY DRAINAGE AT END BENT



PLAN

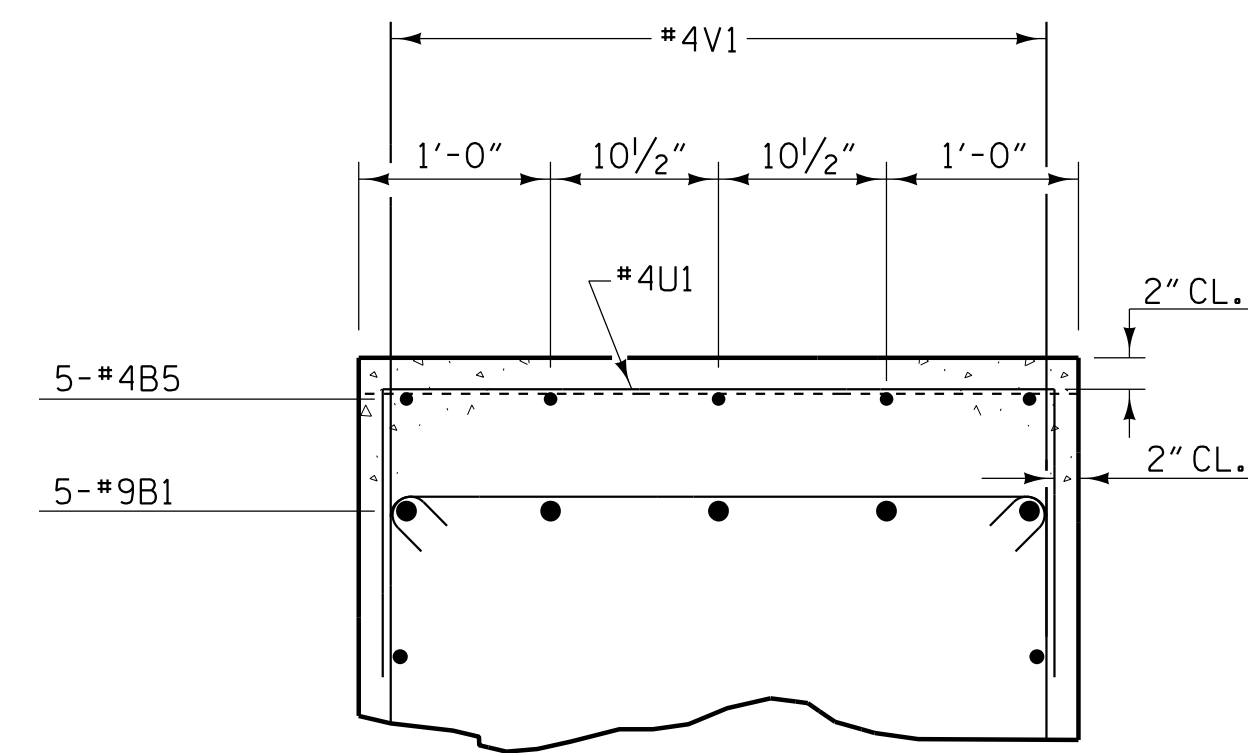
THE CONCRETE IN THE SHADED AREA OF THE WING SHALL BE POURED AFTER THE JOINT BETWEEN THE DECK AND APPROACH SLAB HAS BEEN SAWED AND BARRIER RAIL IS CAST IF SLIP FORMING IS USED.



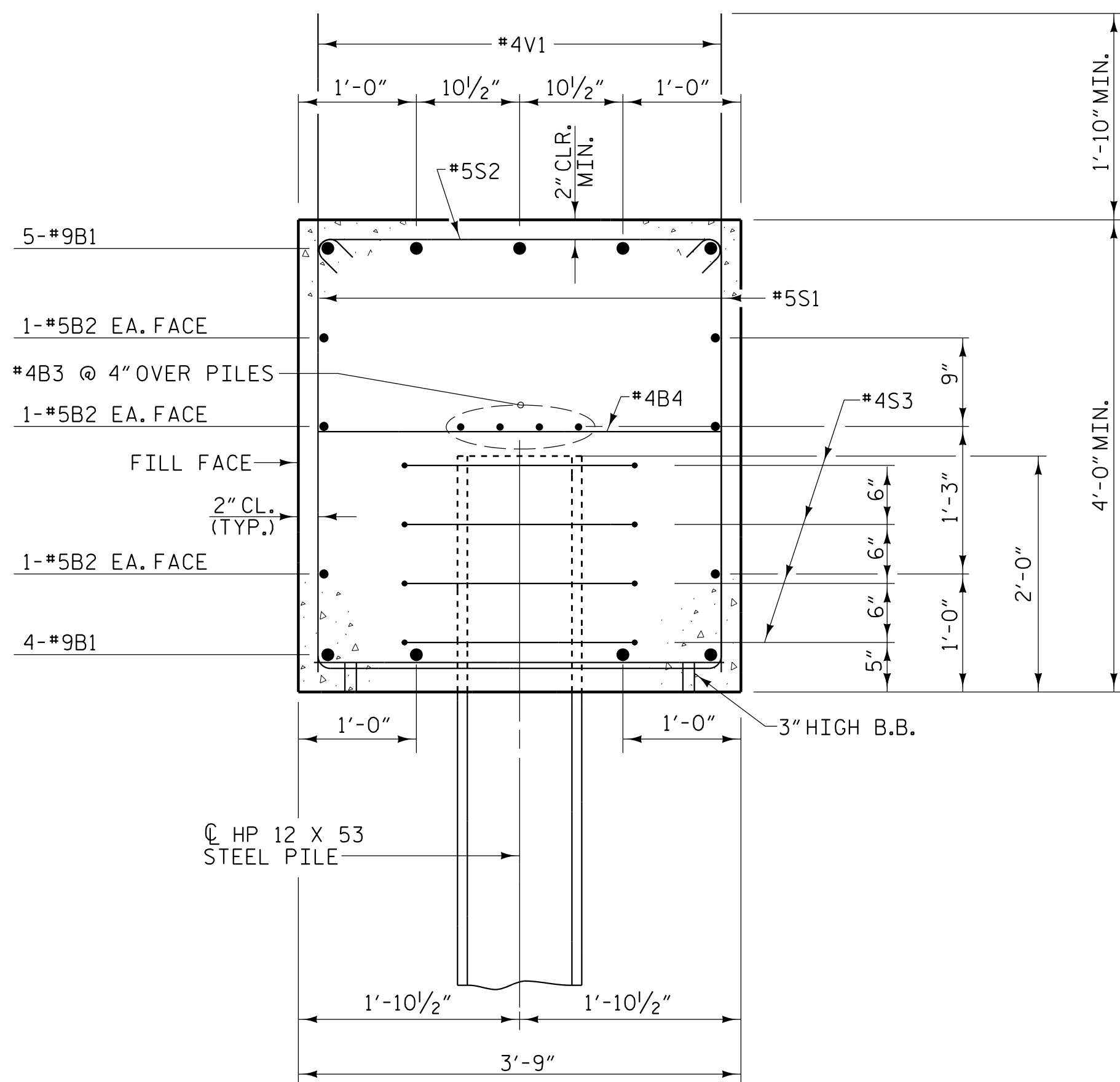
ELEVATION

WINGWALL BLOCKOUT

(RIGHT WINGWALL SHOWN, LEFT WINGWALL SIMILAR)

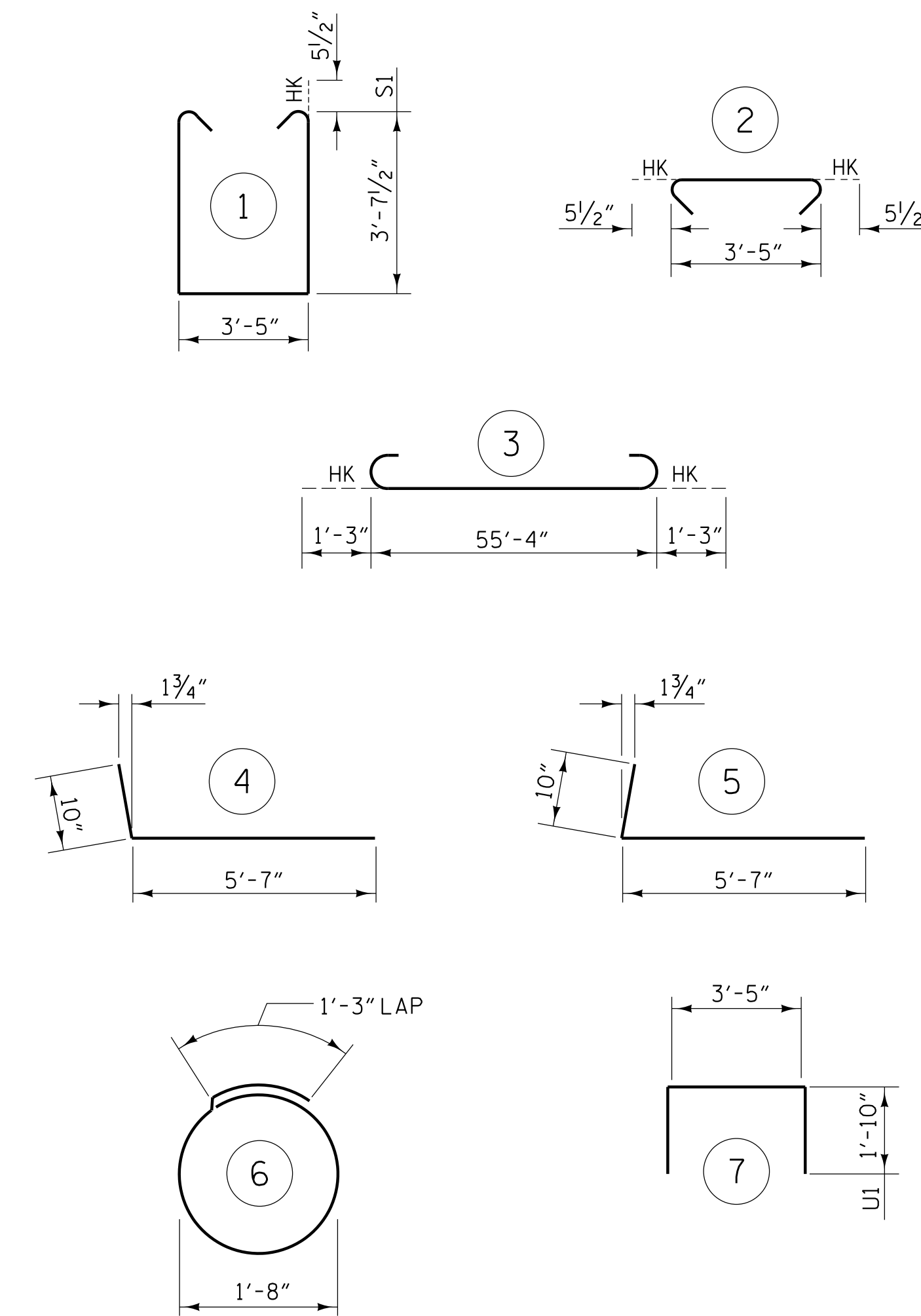


PART SECTION B-B



SECTION A-A

BAR TYPES



ALL BAR DIMENSIONS ARE OUT TO OUT

BILL OF MATERIAL

END BENT 1

BAR	NO.	SIZE	TYPE	LENGTH	WEIGHT
B1	9	#9	3	57'-10"	1770
B2	6	#5	STR	55'-4"	346
B3	8	#4	STR	28'-11"	155
B4	14	#4	STR	3'-5"	32
B5	5	#4	STR	23'-5"	78
H1	28	#5	4	6'-5"	187
H2	32	#5	STR	2'-9"	92
H3	28	#5	5	6'-5"	187
S1	62	#5	1	11'-7"	749
S2	62	#5	2	4'-4"	280
S3	32	#4	6	6'-6"	139
U1	16	#4	7	7'-1"	76
V1	76	#4	STR	5'-7"	283
V2	18	#4	STR	9'-6"	114
V3	18	#4	STR	9'-4"	112

TOTAL REINFORCING STEEL 4600 lbs.

CLASS "A" CONCRETE - CU. YARDS	
POUR 1 (CAP & LOWER WINGS)	32.7 cu. yds.
POUR 2 (UPPER WINGS)	3.4 cu. yds.
TOTAL	36.1 cu. yds.

PROJECT NO. I-5987A
 ROBESON COUNTY
 STATION: 41+19.02 -Y1A- POT

SHEET 3 OF 3

STATE OF NORTH CAROLINA
 DEPARTMENT OF TRANSPORTATION
 RALEIGH

SUBSTRUCTURE
 INTEGRAL END BENT 1
 DETAILS

REVISIONS						SHEET NO.
NO.	BY:	DATE:	NO.	BY:	DATE:	S2-23
1			3			TOTAL SHEETS 31
2			4			

PLANS PREPARED BY:

NV5

NV5 ENGINEERS & CONSULTANTS, INC.
 3300 REGENCY PARKWAY, SUITE 100
 CARY, NC 27518
 P: 919.851.1912 www.NV5.com
 NC License # F-1333

Professional Engineer Seal for Kevin Austin, State of North Carolina, License No. 7832.

DOCUMENT NOT CONSIDERED FINAL UNLESS ALL SIGNATURES COMPLETED

DRAWN BY: W. B. ALLEN DATE: 11/21
 CHECKED BY: G. F. WILSON DATE: 11/21
 DESIGN ENGINEER OF RECORD: L. K. AUSTIN DATE: 12/21

5/5/2022 10:40:05 PM RA:\Structures\I-5987A (Y1A)\5987A.SMU.E3.770054.dgn