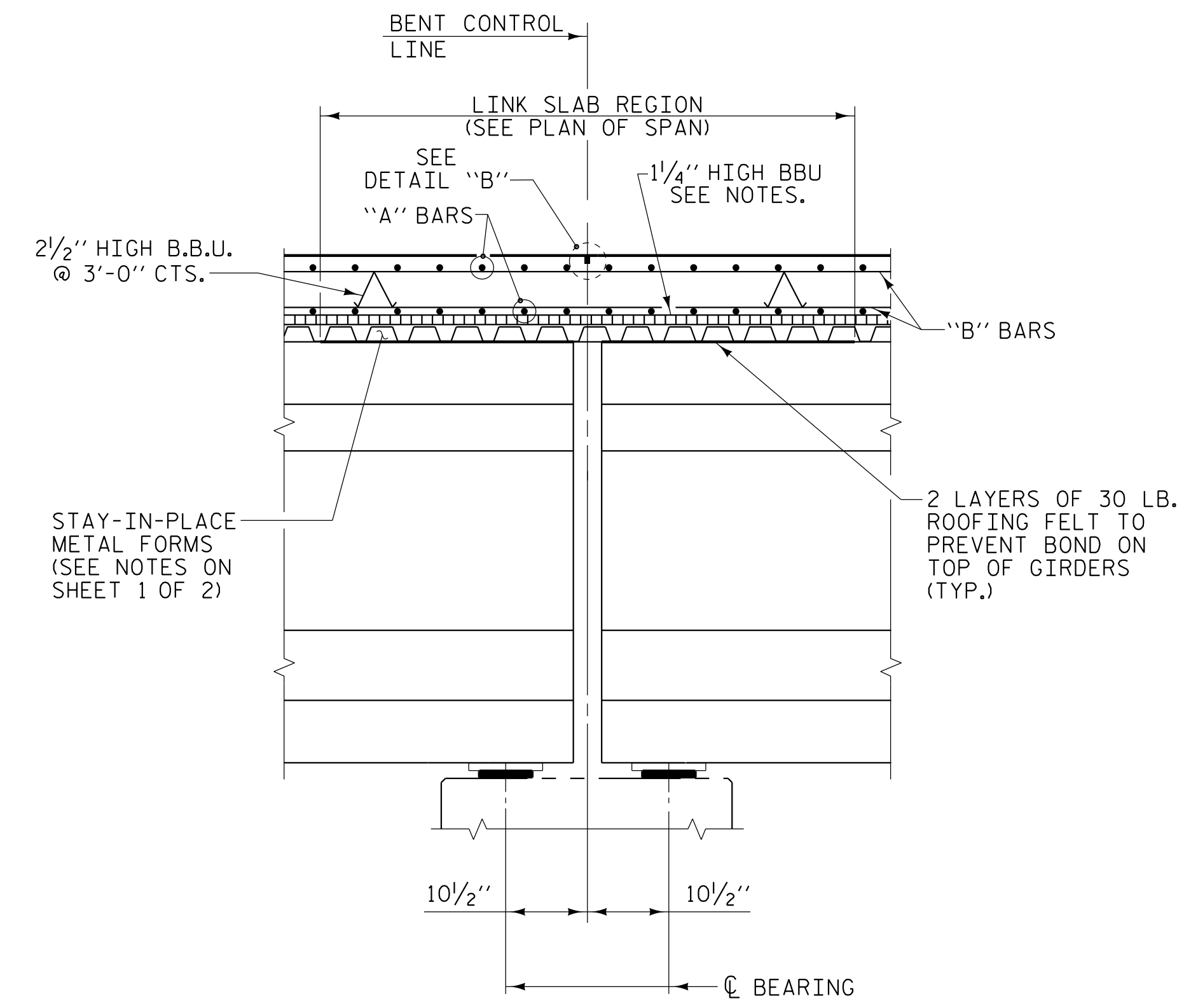
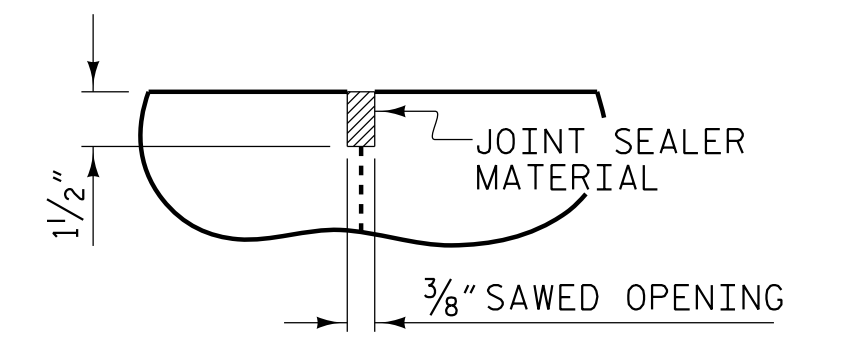


SECTION THRU INTEGRAL END BENTS

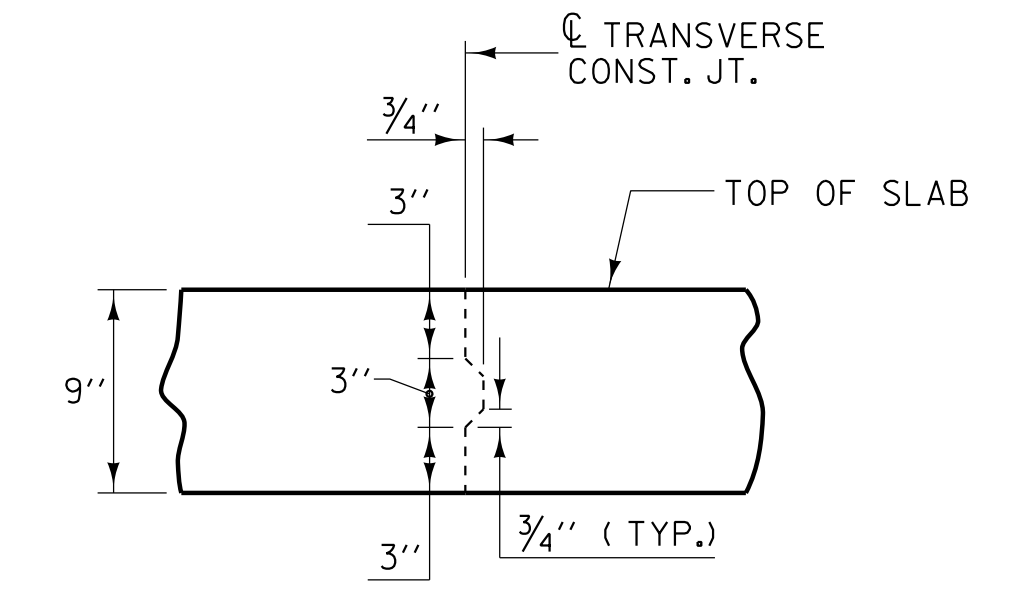


SECTION AT BENT



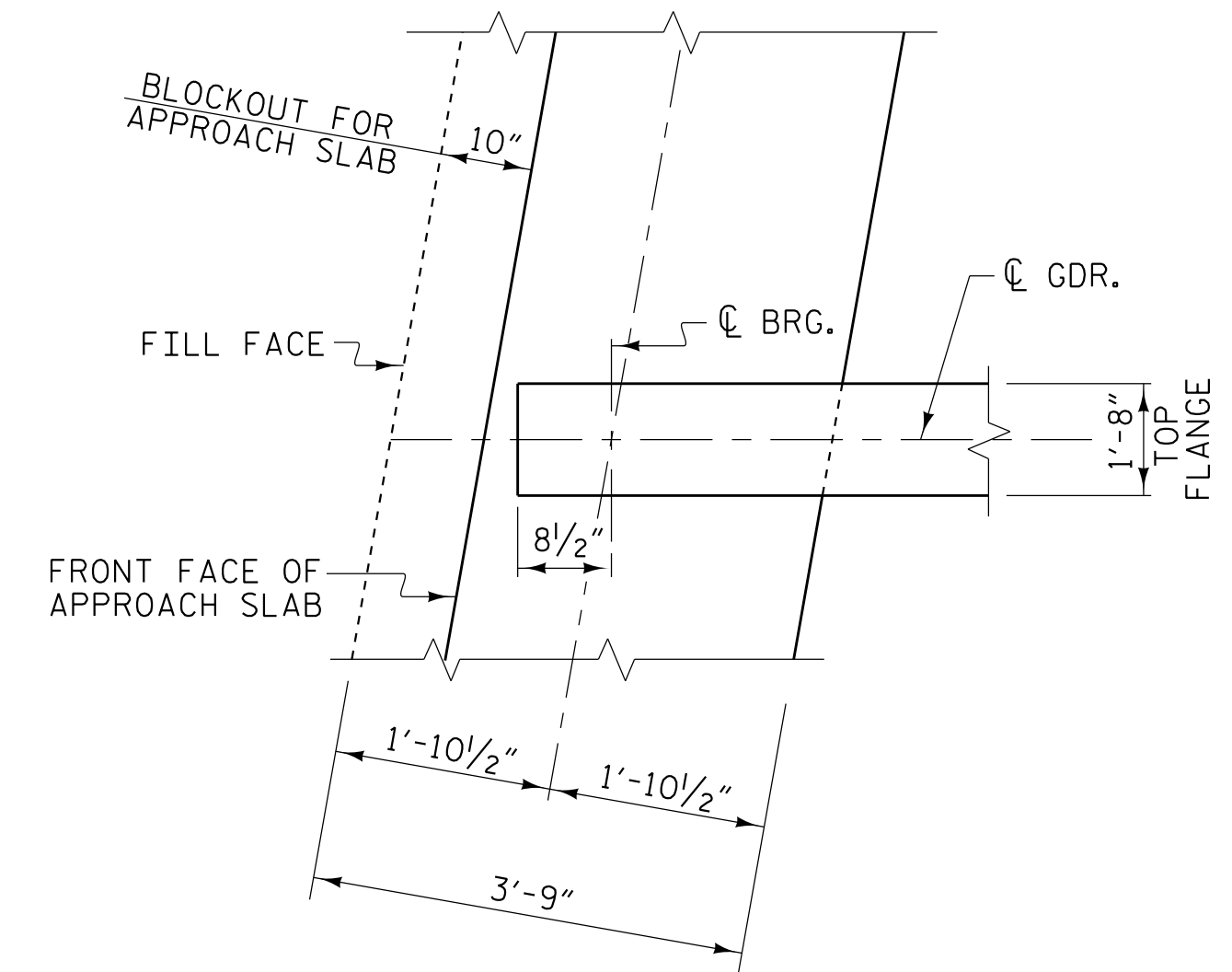
DETAIL "B"

A 1/2" DEEP, 3/8" WIDE CONTRACTION JOINT AT BENT CONTROL LINE SHALL BE SAWN WITHIN 24 HOURS OF POURING THE LINK SLAB DECK. THE JOINT SHALL BE FILLED WITH JOINT SEALER MATERIAL. THE JOINT SEALER MATERIAL SHALL CONFORM TO THE REQUIREMENTS OF SECTION 1028-3 OF THE STANDARD SPECIFICATIONS.

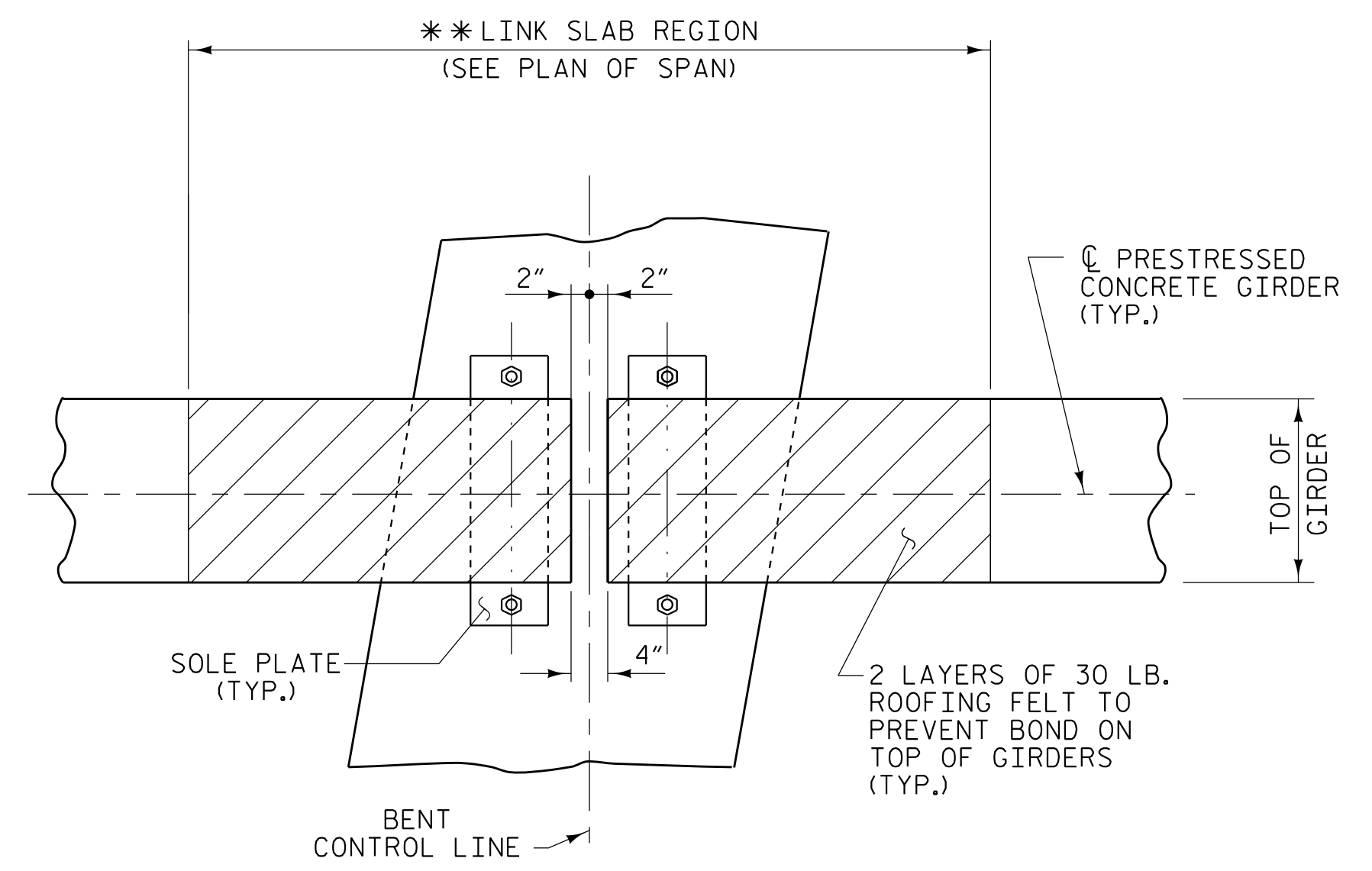


TRANSVERSE CONSTRUCTION JOINT DETAIL

NOTE: REINFORCING STEEL IN SLAB NOT SHOWN. LONGITUDINAL REINFORCING STEEL SHALL BE CONTINUOUS THRU JOINT



PLAN OF GIRDER AT END BENT
END BENT 1 SHOWN, END BENT 2 SIMILAR

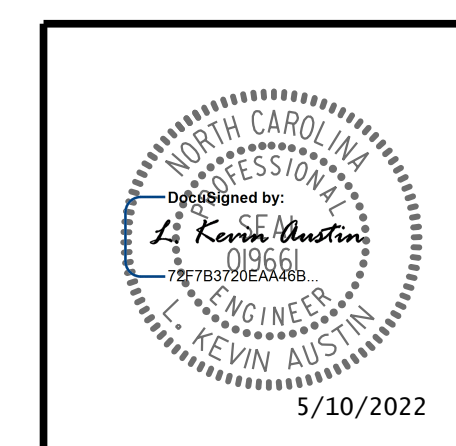


PLAN OF GIRDERS AT BENT

** THE TOP OF THE GIRDER IN THE REGION OF THE LINK SLAB SHALL BE SMOOTH (NOT RAKED) AND FREE OF STIRRUPS, ANCHOR STUDS, DECK FORMWORK ATTACHMENTS AND OVERHANG FALSEWORK/FORMWORK ATTACHMENTS.

PLANS PREPARED BY:

NV5 ENGINEERS & CONSULTANTS, INC.
3300 REGENCY PARKWAY, SUITE 100
CARY, NC 27518
P: 919.851.1912 www.nv5.com
NC License # F-1333



PROJECT NO. I-5987A
ROBESON COUNTY
STATION: 41+19.02 -Y1A- POT

SHEET 2 OF 2

STATE OF NORTH CAROLINA
DEPARTMENT OF TRANSPORTATION
RALEIGH

**SUPERSTRUCTURE
TYPICAL SECTION
DETAILS**

REVISIONS						SHEET NO.
NO.	BY:	DATE:	NO.	BY:	DATE:	S2-7
1			3			TOTAL SHEETS
2			4			31

DRAWN BY : W. B. ALLEN DATE : 3/21
CHECKED BY : G. F. WILSON DATE : 9/21
DESIGN ENGINEER OF RECORD: L. K. AUSTIN DATE : 12/21

**DOCUMENT NOT CONSIDERED FINAL
UNLESS ALL SIGNATURES COMPLETED**

5/5/2022 10:26 AM RA:\Structures\I-5987A (Y1A)\5987A.SMU.152.770054.dgn