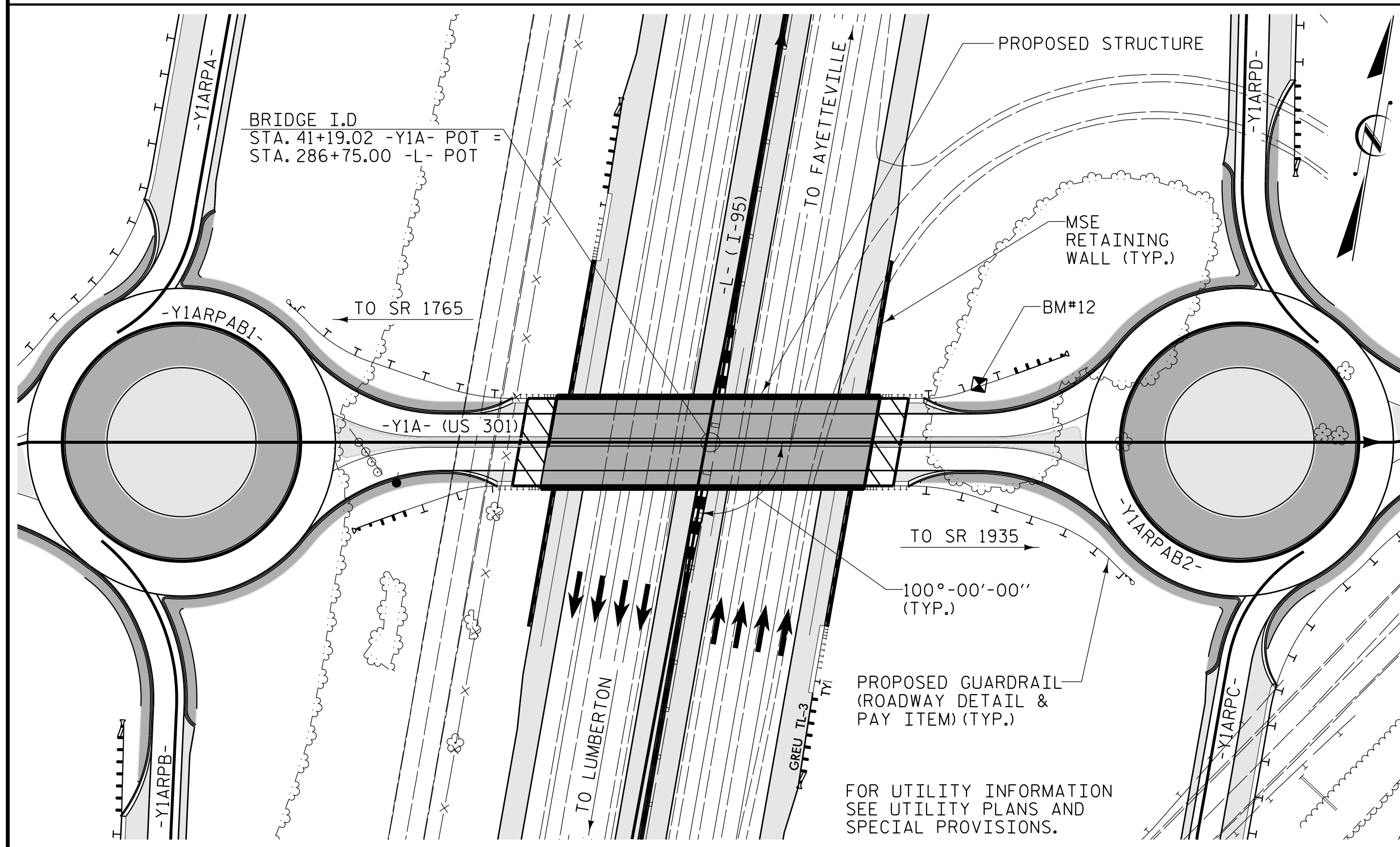


BM#12: BENCH NAIL SET IN BASE OF 18" PINE; 29.95' LT STA. 42+58.67 -Y1A- ELEV. 149.61



LOCATION SKETCH

TOTAL BILL OF MATERIAL

	REMOVAL OF EXISTING STRUCTURE	ASBESTOS ASSESSMENT	FOUNDATION EXCAVATION FOR BENT 1	PDA TESTING	REINFORCED CONCRETE DECK SLAB	GROOVING BRIDGE FLOORS	CLASS A CONCRETE	BRIDGE APPROACH SLABS	REINFORCING STEEL	SPIRAL COLUMN REINFORCING STEEL
	LUMP SUM	LUMP SUM	LUMP SUM	EACH	SQ. FT.	SQ. FT.	CU. YDS.	LUMP SUM	LBS.	LBS.
SUPERSTRUCTURE					8250	6977		LUMP SUM		
END BENT 1							36.1		4600	
BENT 1			LUMP SUM				73.3		10148	2021
END BENT 2							36.1		4600	
TOTAL	LUMP SUM	LUMP SUM	LUMP SUM	2	8250	6977	145.5	LUMP SUM	19348	2021

TOTAL BILL OF MATERIAL

	54" PRESTRESSED CONCRETE GIRDERS		PILE DRIVING EQUIPMENT SETUP FOR HP 12 X 53 STEEL PILES	PILE DRIVING EQUIPMENT SETUP FOR HP 14 X 73 STEEL PILES	HP 12 X 53 STEEL PILES		HP 14 X 73 STEEL PILES		PILE REDRIVES	CONCRETE BARRIER RAIL	4" SLOPE PROTECTION	ELASTOMERIC BEARINGS
	NO.	LIN. FT.			EACH	EACH	NO.	LIN. FT.				
SUPERSTRUCTURE	10	832.50								335.06		LUMP SUM
END BENT 1			8		8	800			4		13	
BENT 1				12		12	840		6			
END BENT 2			8		8	680			4		13	
TOTAL	10	832.50	16	12	16	1480	12	840	14	335.06	26	LUMP SUM

NOTES

ASSUMED LIVE LOAD = HL-93 OR ALTERNATE LOADING.

THIS BRIDGE HAS BEEN DESIGNED IN ACCORDANCE WITH THE REQUIREMENT OF THE AASHTO LRFD BRIDGE DESIGN SPECIFICATIONS.

THIS BRIDGE IS LOCATED IN SEISMIC ZONE 2.

FOR OTHER DESIGN DATA AND GENERAL NOTES, SEE SHEET SN.

FOR SUBMITTAL OF WORKING DRAWINGS, SEE SPECIAL PROVISIONS.

FOR FALSEWORK AND FORMWORK, SEE SPECIAL PROVISIONS.

FOR CRANE SAFETY, SEE SPECIAL PROVISIONS.

FOR GROUT FOR STRUCTURES, SEE SPECIAL PROVISIONS.

PRESTRESSED CONCRETE DECK PANELS MAY BE USED IN LIEU OF METAL STAY-IN-PLACE FORMS IN ACCORDANCE WITH ARTICLE 420-3 OF THE STANDARD SPECIFICATIONS.

REMOVABLE FORMS MAY BE USED IN LIEU OF METAL STAY-IN-PLACE FORMS IN ACCORDANCE WITH ARTICLE 420-3 OF THE STANDARD SPECIFICATIONS.

NEEDLE BEAMS WILL NOT BE ALLOWED UNLESS OTHERWISE CALLED FOR ON THE PLANS OR APPROVED BY THE ENGINEER.

INASMUCH AS THE PAINT SYSTEM ON THE EXISTING STRUCTURAL STEEL CONTAINS LEAD, THE CONTRACTOR'S ATTENTION IS DIRECTED TO ARTICLE 107-1 OF THE STANDARD SPECIFICATIONS. ANY COSTS RESULTING FROM COMPLIANCE WITH APPLICABLE STATE OR FEDERAL REGULATIONS PERTAINING TO HANDLING OF MATERIALS CONTAINING LEAD BASED PAINT SHALL BE INCLUDED IN THE BID PRICE FOR "REMOVAL OF EXISTING STRUCTURE AT STATION 41+19.02 -Y1A-".

AFTER SERVING AS A TEMPORARY STRUCTURE THE EXISTING STRUCTURE CONSISTING OF 5 SPANS - 1 @ 72'-11", 1 @ 76'-0", 1 @ 36'-8", 1 @ 76'-0", 1 @ 72'-9"; 28'-0" CLEAR ROADWAY WIDTH AND REINFORCED CONCRETE FLOOR ON I-BEAMS AND LOCATED 560 FT FROM THE PROPOSED STRUCTURE SHALL BE REMOVED. THE EXISTING BRIDGE IS PRESENTLY NOT POSTED FOR LOAD LIMIT. SHOULD THE STRUCTURAL INTEGRITY OF THE BRIDGE DETERIORATE DURING CONSTRUCTION OF THE PROPOSED BRIDGE, A LOAD LIMIT MAY BE POSTED AND MAY BE REDUCED AS FOUND NECESSARY DURING THE LIFE OF THE PROJECT.

FOR MAINTENANCE AND PROTECTION OF TRAFFIC BENEATH PROPOSED STRUCTURE, SEE SPECIAL PROVISIONS.

FOR EROSION CONTROL MEASURES, SEE EROSION CONTROL PLANS.

FOR ASBESTOS ASSESSMENT FOR BRIDGE DEMOLITION AND RENOVATION ACTIVITIES, SEE SPECIAL PROVISIONS.

FOR MSE RETAINING WALLS, SEE GEOTECHNICAL SPECIAL PROVISIONS.

PROJECT NO. I-5987A  
ROBESON COUNTY  
 STATION: 41+19.02 -Y1A- POT

SHEET 3 OF 3

STATE OF NORTH CAROLINA  
 DEPARTMENT OF TRANSPORTATION  
 RALEIGH

GENERAL DRAWING

FOR BRIDGE ON -Y1A- (US 301)  
 OVER -L- (INTERSTATE 95)  
 BETWEEN SR 1765 AND SR 1935

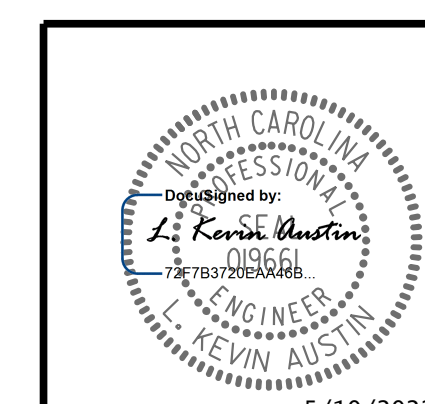
REVISIONS

NO.	BY:	DATE:	NO.	BY:	DATE:
1			3		
2			4		

SHEET NO.  
 S2-4  
 TOTAL SHEETS  
 31



DOCUMENT NOT CONSIDERED FINAL  
 UNLESS ALL SIGNATURES COMPLETED



5/10/2022

DRAWN BY : W. B. ALLEN DATE : 11/21  
 CHECKED BY : G. F. WILSON DATE : 11/21  
 DESIGN ENGINEER OF RECORD: L. K. AUSTIN DATE : 12/21

5/5/2022 11:48:53 AM RA:\Structures\I-5987A\Y1A\I-5987A\_SMU.GD2\_710054.dgn