

END BENT 1
(INTEGRAL)

BENT 1
FOUNDATION LAYOUT

END BENT 2
(INTEGRAL)

NOTES

- ALL PILES AT END BENT NO.1 AND END BENT NO.2 ARE HP 12 X 53.
- ALL PILES AT BENT NO.1 ARE HP 14 X 73.
- DIMENSIONS LOCATING PILES ARE SHOWN TO THE PILE CENTERLINE.
- FOR PILES, SEE PILES PROVISION AND SECTION 450 OF THE STANDARD SPECIFICATIONS.
- SEE ROADWAY PLANS AND SECTION 235 OF THE STANDARD SPECIFICATIONS FOR THE SETTLEMENT GAUGES REQUIRED AT END BENT NO.1 AND END BENT NO.2.
- INSTALL PILE SLEEVES BEFORE CONSTRUCTING THE MECHAICALLY STABILIZED EARTH (MSE) ABUTMENT WALL AT END BENT NO.1 AND END BENT NO.2. OBSERVE A 4 MONTH WAITING PERIOD AFTER CONSTRUCTING THE MSE ABUTMENT WALL AND THE REINFORCED BRIDGE APPROACH FILL TO WITHIN 1 FT. OF THE FINAL GRADE ELEVATION. THEN INSTALL PILES THROUGH THE CORRUGATED STEEL PIPES AND FILL PIPES WITH LOOSE UNCOMPACTED SAND BEFORE CONSTRUCTING END BENT CAPS. FOR PILE SLEEVES, SEE MSE RETAINING WALL PLNS AND PROVISION. FOR BRIDGE WAITING PERIODS, SEE ROADWAY PLANS AND SECTION 235 OF THE STANDARD SPECIFICATIONS.

FOR REINFORCED BRIDGE APPROACH FILL, SEE APPROACH FILL FOR INTEGRAL ABUTMENT AT MSE WALLS (SPECIAL PROVISION).

PROJECT NO. I-5987A
ROBESON COUNTY
 STATION: 41+19.02 -Y1A- POT

SHEET 2 OF 3

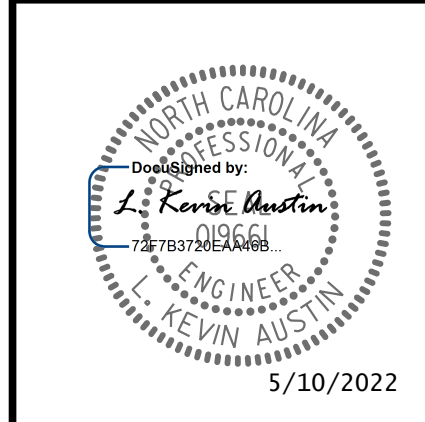
STATE OF NORTH CAROLINA
 DEPARTMENT OF TRANSPORTATION
 RALEIGH

GENERAL DRAWING
 FOR BRIDGE ON -Y1- (SR 1735)
 OVER -L- (US-74)
 BETWEEN NC 214 AND SR 1730

PLANS PREPARED BY:

NV5

NV5 ENGINEERS & CONSULTANTS, INC.
 3300 REGENCY PARKWAY, SUITE 100
 CARY, NC 27518
 P: 919.851.1912 www.NV5.com
 NC License # F-1333



REVISIONS						SHEET NO.
NO.	BY:	DATE:	NO.	BY:	DATE:	S2-2
1			3			TOTAL SHEETS
2			4			31

DRAWN BY :	W. B. ALLEN	DATE :	11/21
CHECKED BY :	G. F. WILSON	DATE :	11/21
DESIGN ENGINEER OF RECORD:	L. K. AUSTIN	DATE :	12/21

**DOCUMENT NOT CONSIDERED FINAL
 UNLESS ALL SIGNATURES COMPLETED**

5/5/2022 10:46:44 AM R:\Structures\I-5987A (Y1A)\I-5987A_SMU_FL_170054.dgn