

BILL OF MATERIAL						
FOR ONE APPROACH SLAB (2 REQ'D.)						
BAR	NO.	SIZE	TYPE	LENGTH	WEIGHT	
*A1	16	#4	STR	35'-1"	375	
A2	16	#4	STR	35'-1"	375	
*B1	70	#5	STR	14'-1"	1,028	
B2	70	#6	STR	14'-7"	1,533	
REINFORCING STEEL					1,908	LBS.
* EPOXY COATED REINFORCING STEEL					1,403	LBS.
CLASS AA CONCRETE					23.0	C.Y.

SPLICE LENGTHS		
BAR SIZE	EPOXY COATED	UNCOATED
#4	1'-11"	1'-7"
#5	2'-5"	2'-0"
#6	3'-7"	2'-5"

NOTES:

APPROACH SLAB SHALL NOT BE CONSTRUCTED PRIOR TO COMPLETION OF THE BRIDGE DECK.

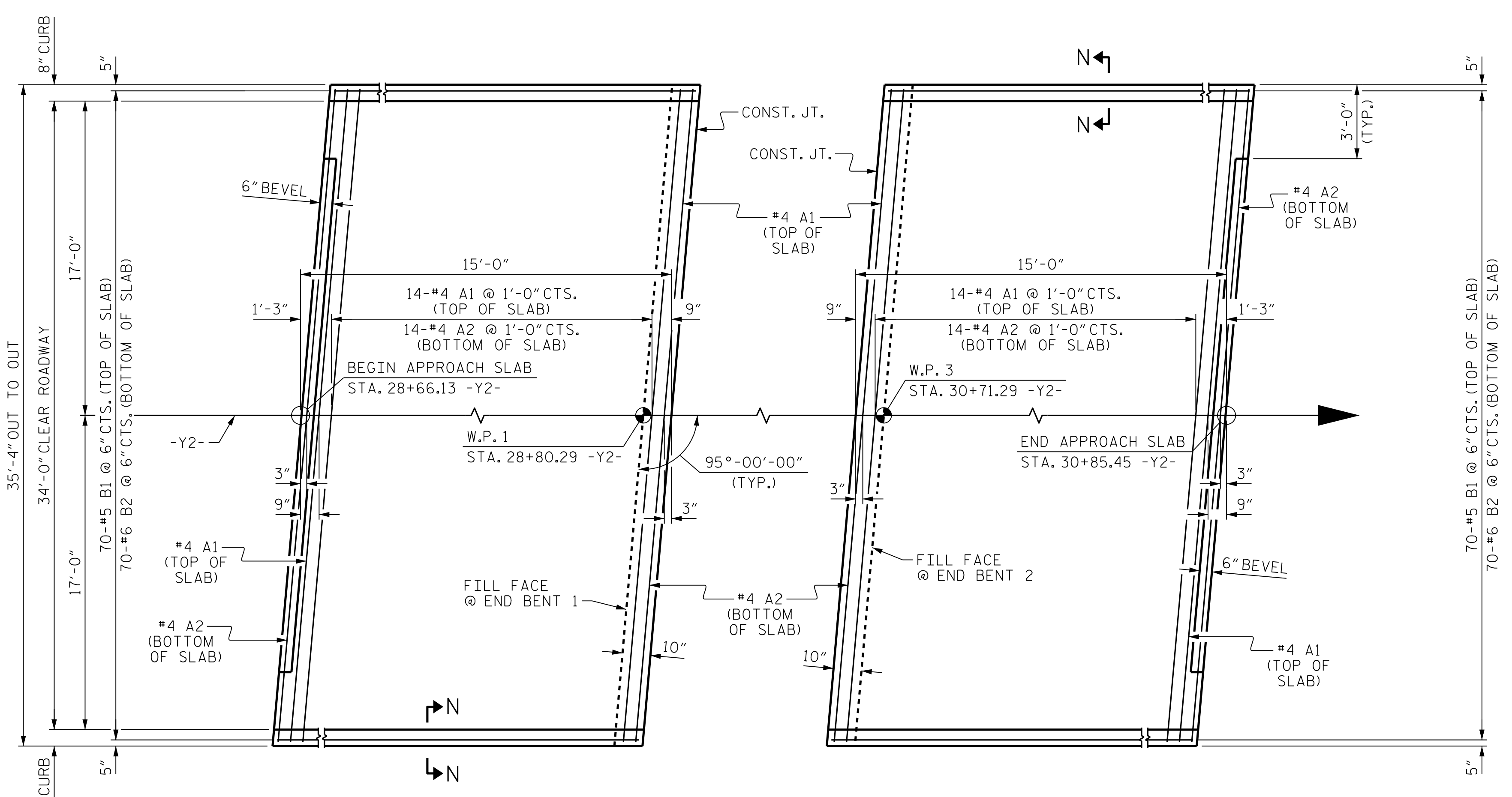
FOR BRIDGE APPROACH FILL INCLUDING GEOTEXTILE, AND SELECT MATERIAL, SEE ROADWAY PLANS.

GEOTEXTILE SHALL BE TYPE 1 IN ACCORDANCE WITH THE STANDARD SPECIFICATIONS SECTION 1056.

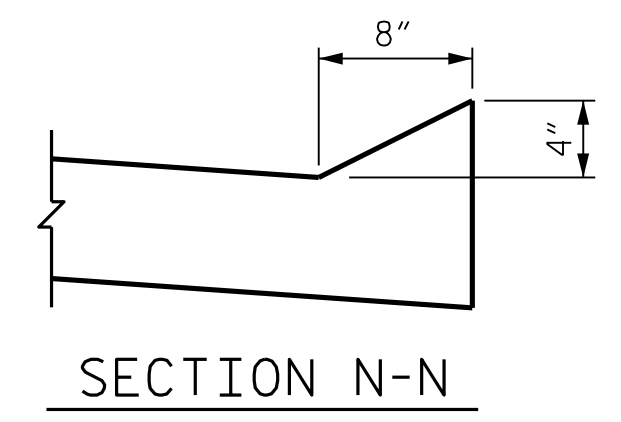
SELECT MATERIAL BACKFILL (CLASS V OR CLASS VI) SHALL BE IN ACCORDANCE WITH STANDARD SPECIFICATIONS SECTION 1016.

SELECT MATERIAL BACKFILL IS TO BE CONTINUOUS ALONG FILL FACE OF BACKWALL FROM OUTSIDE EDGE TO OUTSIDE EDGE OF APPROACH SLAB.

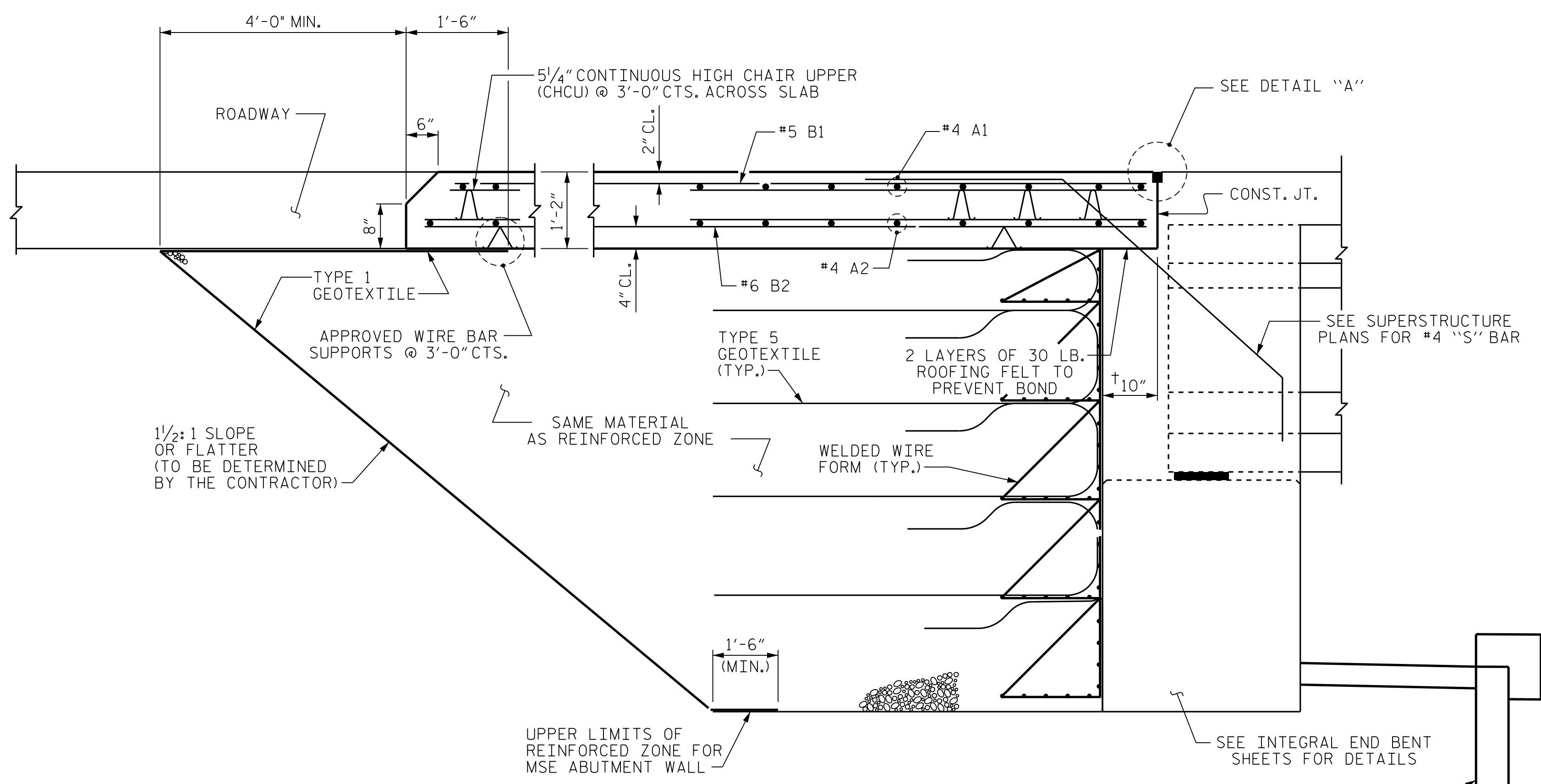
THE JOINT OPENING AT THE APPROACH SLAB/DECK INTERFACE SHALL BE SAWED NO MORE THAN 12 HOURS AFTER THE APPROACH SLAB IS CAST. THE JOINT SHALL BE CLEANED OF ALL DEBRIS BEFORE THE SEALANT IS APPLIED. THE JOINT SEALER MATERIAL SHALL CONFORM TO THE REQUIREMENTS OF SECTION 1028-3 OF THE STANDARD SPECIFICATIONS.



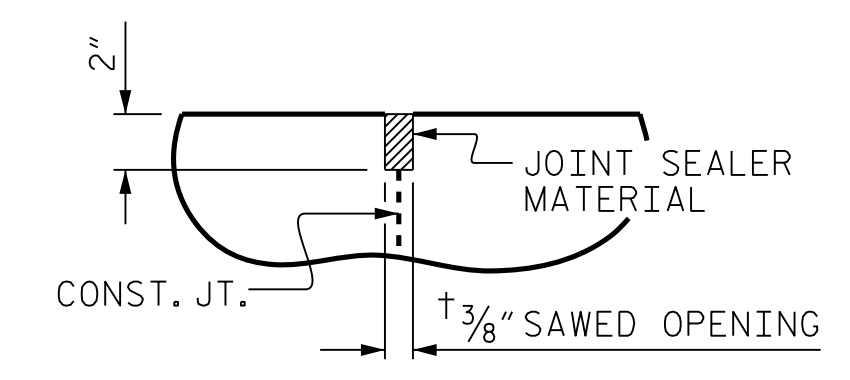
PLAN AT END BENT 1 **PLAN AT END BENT 2**
 DIMENSIONS SHOWN ARE TYPICAL FOR BOTH APPROACH SLABS



SECTION N-N



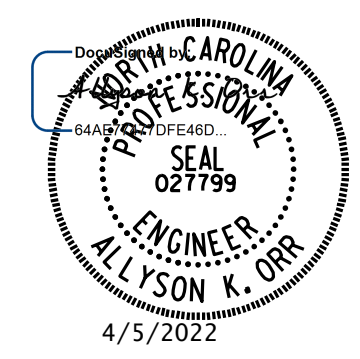
SECTION THRU SLAB
 (SPECIAL BRIDGE APPROACH FILL)



DETAIL "A"
 † NORMAL TO END BENT

PROJECT NO. I-5987A
ROBESON COUNTY
 STATION: 29+75.79 -Y2-

SHEET 1 OF 2



DOCUMENT NOT CONSIDERED FINAL UNLESS ALL SIGNATURES COMPLETED

MI ENGINEERING
 1011 SCHAUB DRIVE, SUITE 100
 RALEIGH, NC 27606
 (919) 851-6606
 FIRM PE NUMBER: P-0671

STATE OF NORTH CAROLINA
 DEPARTMENT OF TRANSPORTATION
 RALEIGH
 STANDARD
 BRIDGE APPROACH SLAB
 FOR INTEGRAL ABUTMENT
 WITH FLEXIBLE PAVEMENT

REVISIONS						SHEET NO.
NO.	BY:	DATE:	NO.	BY:	DATE:	
1			3			S1-35
2			4			

4/5/2022 1:07:10 PM User: blanning
 Filename: N:\NC Bridges\W20003 I-5987A&B I-5987A Structures\401.069.I5987A.SMU.AS1.770151.dgn

ASSEMBLED BY: B.E. LANNING	DATE: 02/2021
CHECKED BY: A.K. ORR	DATE: 03/2021
DESIGN ENGINEER OF RECORD: A.K. ORR	DATE: 12/2021
DRAWN BY: TLA 10/05	REV. 6/13 MAA/GM
CHECKED BY: GM 5/06	REV. 12/17 MAA/THC
	REV. 06/19 BNB/THC