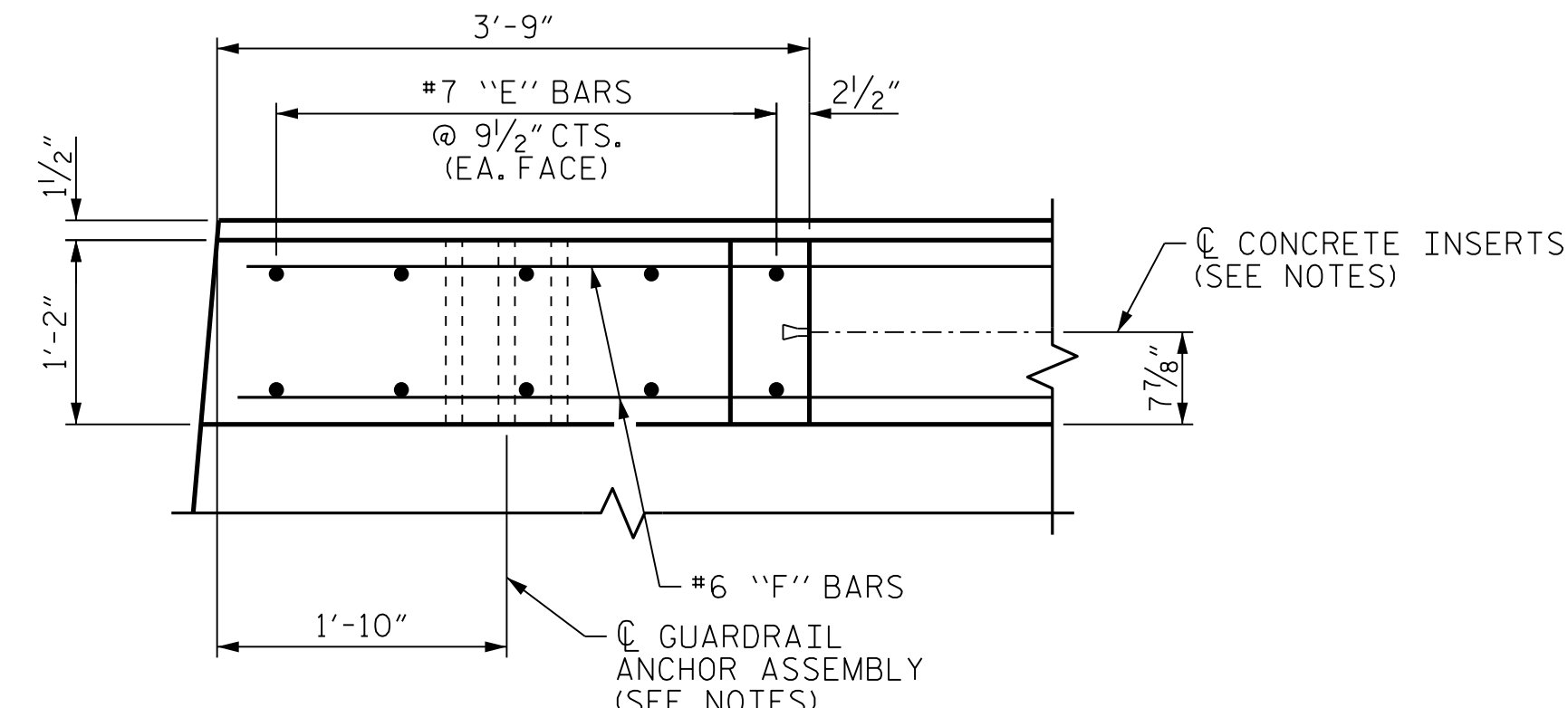
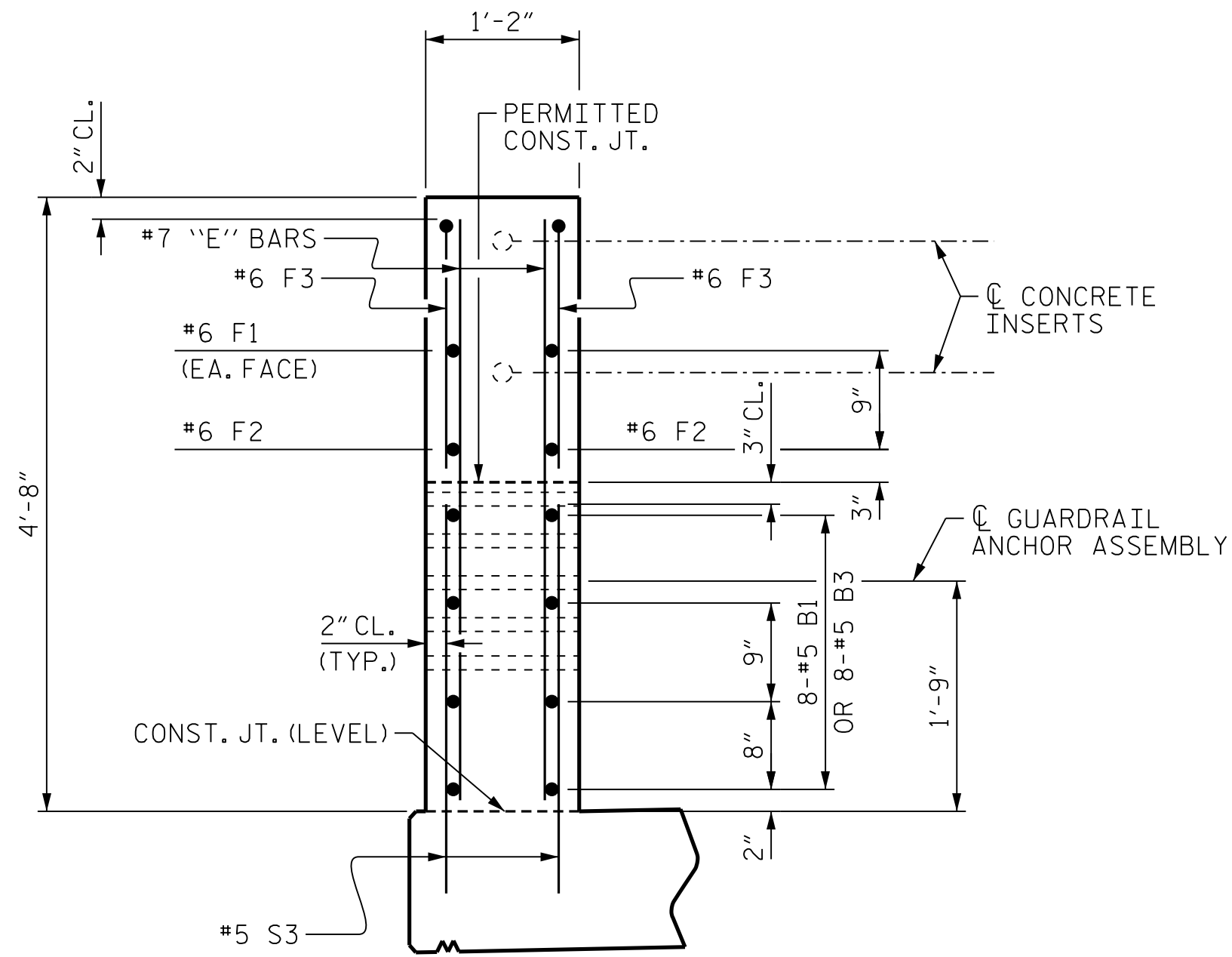


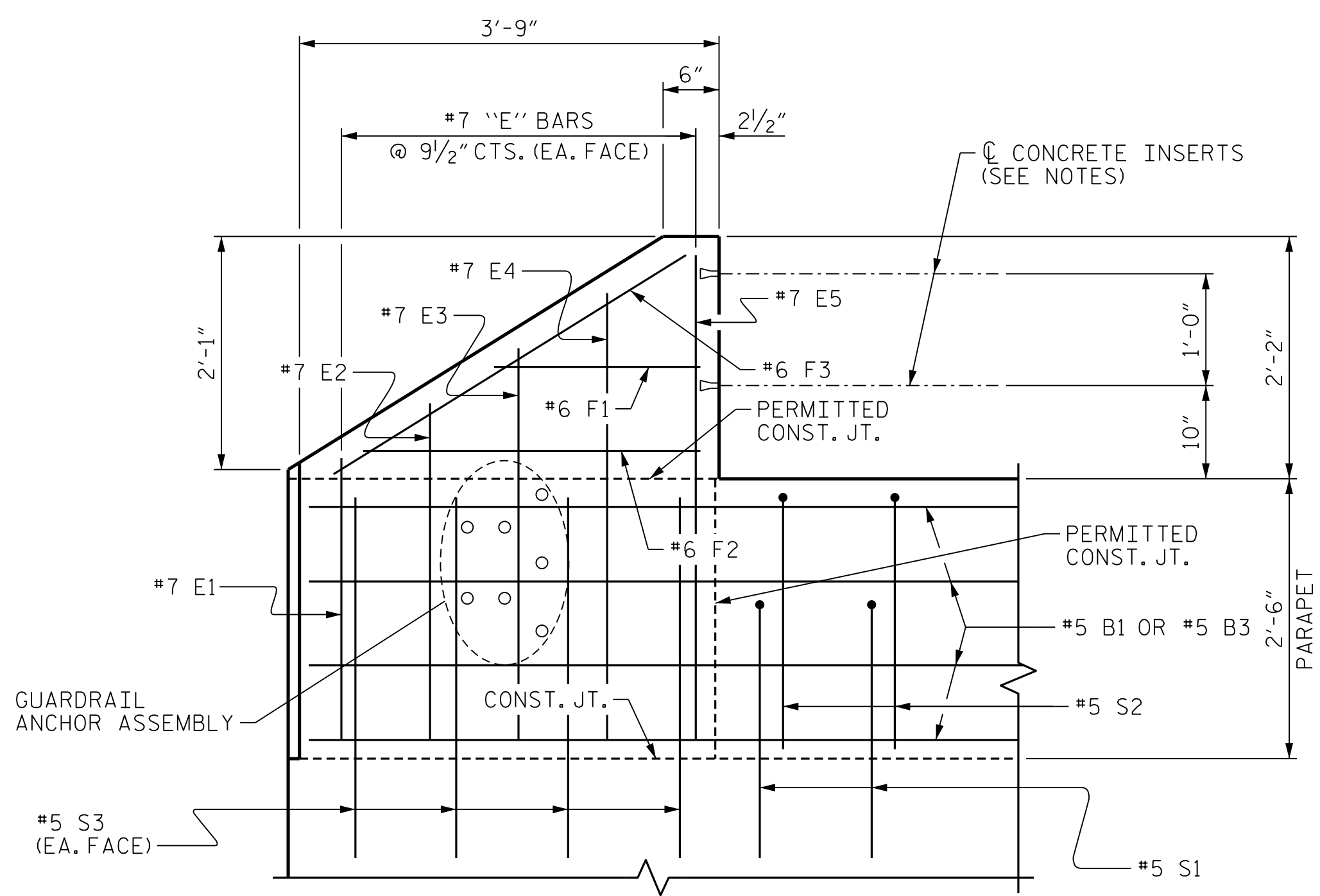
PLAN OF PARAPET



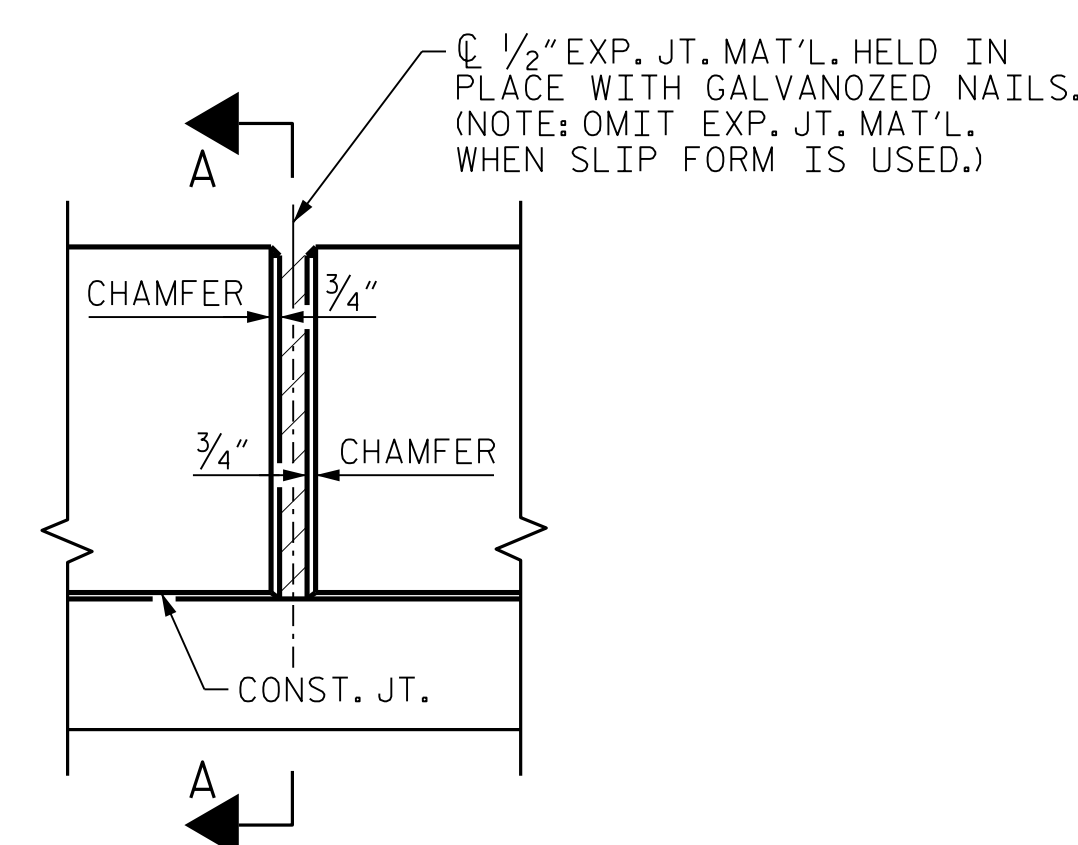
PLAN OF END POST



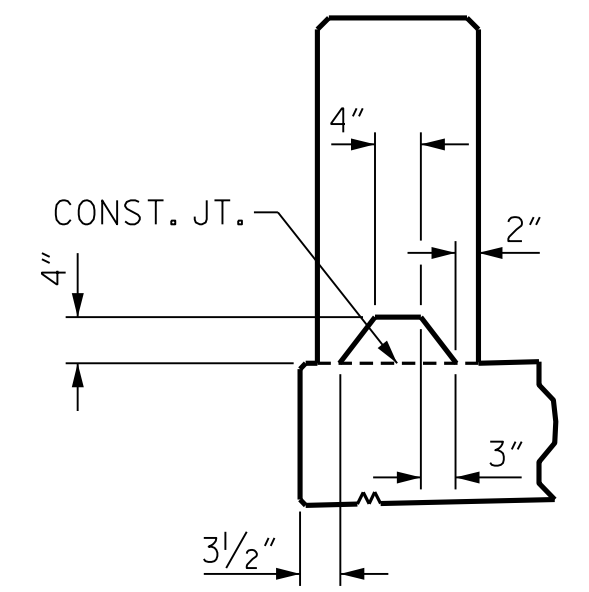
END VIEW



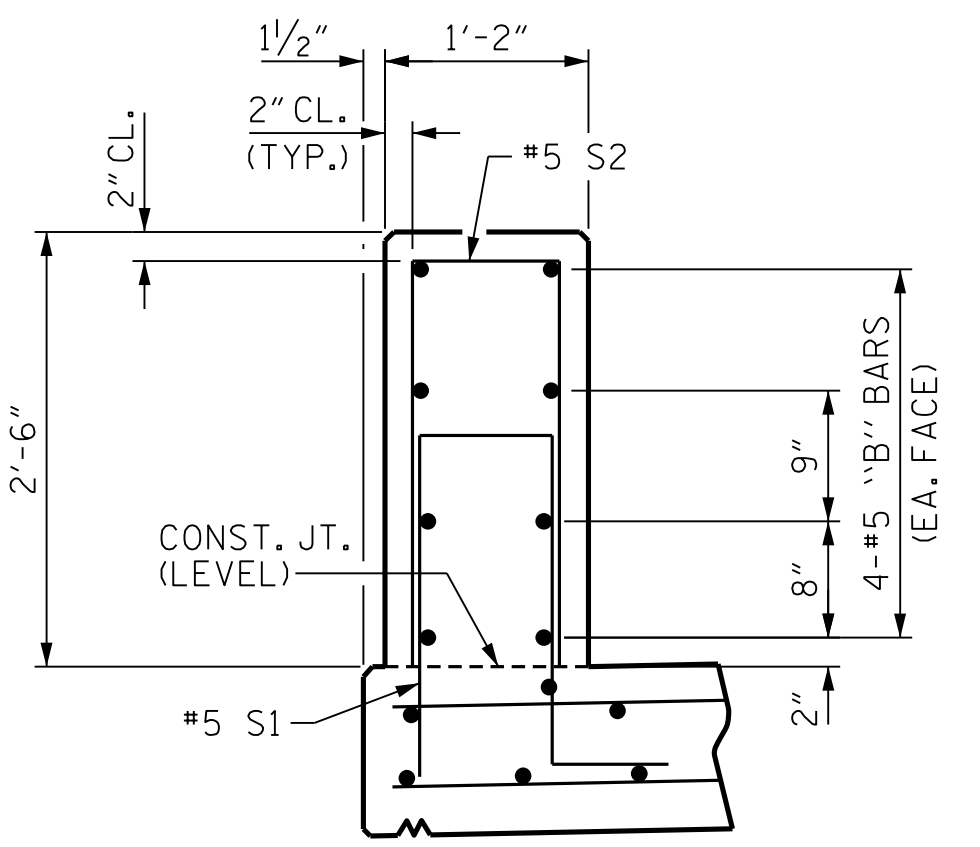
ELEVATION



ELEVATION AT EXPANSION JOINTS



SECTION A-A  
AT DAM IN OPEN JOINT  
(THIS IS TO BE USED ONLY  
WHEN SLIP FORM IS USED.)  
PARAPET DETAILS



SECTION THRU PARAPET

NOTES:

CONCRETE PARAPET IN A CONTINUOUS UNIT SHALL NOT BE CAST UNTIL ALL SLAB CONCRETE IN THAT UNIT HAS BEEN CAST AND HAS REACHED A MINIMUM COMPRESSIVE STRENGTH OF 3,000 PSI.

ALL REINFORCING STEEL IN PARAPETS AND END POSTS SHALL BE EPOXY COATED.

FOR DETAILS OF CONCRETE INSERTS IN END POSTS, SEE "RAIL POST SPACINGS AND END OF RAIL DETAILS" SHEET.

THE #5 S1 AND #5 S2 BARS MAY BE SHIFTED SLIGHTLY IN ORDER TO MAINTAIN A 2" MIN. CLEARANCE TO THE 1/2" EXPANSION JOINT MATERIAL IN PARAPET.

GROOVED CONTRACTION JOINTS, 1/2" IN DEPTH, SHALL BE TOOLED IN ALL EXPOSED FACES OF THE PARAPET AND IN ACCORDANCE WITH ARTICLE 825-10(B) OF THE STANDARD SPECIFICATIONS. THE CONTRACTION JOINT SHALL BE LOCATED AT EACH THIRD POINT BETWEEN EXPANSION JOINTS. ONLY ONE CONTRACTION JOINT IS REQUIRED AT MIDPOINT OF PARAPET SEGMENTS LESS THAN 20 FEET IN LENGTH AND NO CONTRACTION JOINTS ARE REQUIRED FOR THOSE SEGMENTS LESS THAN 10 FEET IN LENGTH.

FOR DETAILS AND LOCATION OF GUARDRAIL ANCHOR ASSEMBLIES, SEE "GUARDRAIL ANCHORAGE DETAILS FOR METAL RAILS" SHEETS.

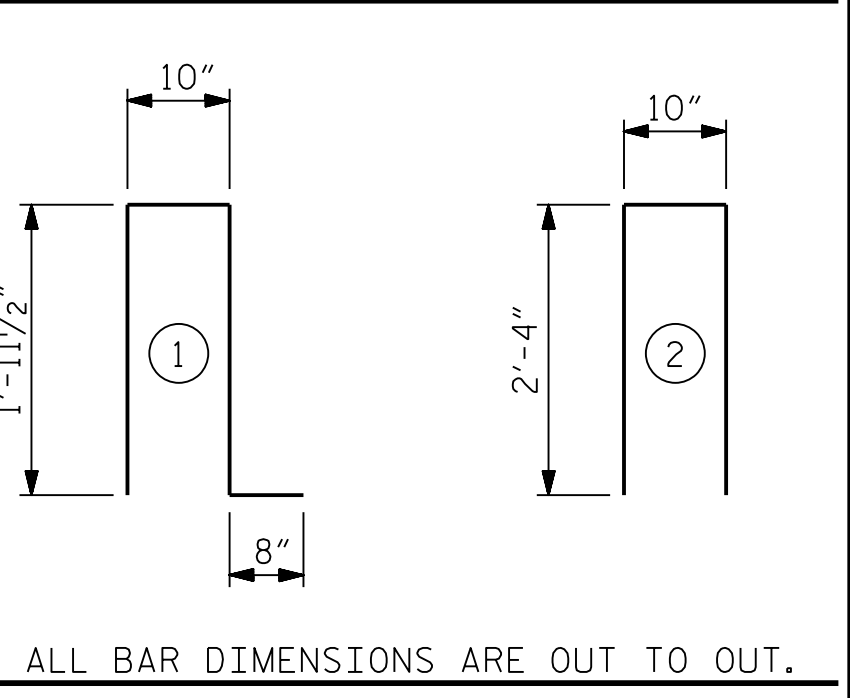
THE JOINT AT ENDS OF DECK AND LINK SLAB SHALL BE SAWED PRIOR TO THE CASTING OF THE PARAPET.

THE #5 S3 BARS SHALL BE INSTALLED USING AN ADHESIVE ANCHORING SYSTEM. AFTER SAWING THE JOINT, THE YIELD LOAD FOR THE #5 S3 BARS IS 18.6 KIPS. FIELD TESTING FOR THE ADHESIVE BONDING SYSTEM IS NOT REQUIRED.

BILL OF MATERIAL

PARAPET AND END POSTS					
BAR	NO.	SIZE	TYPE	LENGTH	WEIGHT
B1	16	#5	STR	20'-3"	338
B2	96	#5	STR	28'-3"	2,829
B3	16	#5	STR	20'-2"	337
E1	8	#7	STR	2'-6"	41
E2	8	#7	STR	3'-0"	49
E3	8	#7	STR	3'-6"	57
E4	8	#7	STR	4'-0"	65
E5	8	#7	STR	4'-4"	71
F1	8	#6	STR	1'-9"	21
F2	8	#6	STR	2'-9"	33
F3	8	#6	STR	3'-8"	44
S1	364	#5	1	5'-5"	2,056
S2	364	#5	2	5'-6"	2,088
S3	32	#5	STR	3'-0"	100
EPOXY COATED REINFORCING STEEL				8,129	LBS.
CLASS AA CONCRETE				43.4	C. Y.
1'-2" x 2'-6" CONCRETE PARAPET				378.65	LIN. FT.

BAR TYPES

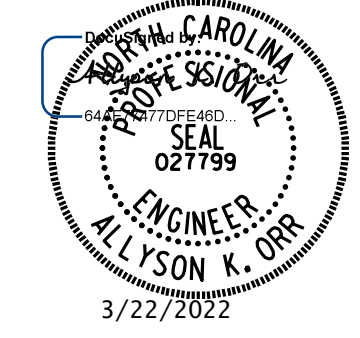


ALL BAR DIMENSIONS ARE OUT TO OUT.

PROJECT NO. I-5987A  
ROBESON COUNTY  
 STATION: 29+75.79 -Y2-

SHEET 2 OF 2

STATE OF NORTH CAROLINA  
 DEPARTMENT OF TRANSPORTATION  
 RALEIGH  
 SUPERSTRUCTURE  
 CONCRETE PARAPET  
 DETAILS AND  
 BILL OF MATERIAL



DOCUMENT NOT CONSIDERED FINAL  
 UNLESS ALL SIGNATURES COMPLETED

MI ENGINEERING  
 1011 SCHAUB DRIVE, SUITE 100  
 RALEIGH, NC 27606  
 (919) 851-6606  
 FIRM PE NUMBER: P-0671

REVISIONS						SHEET NO.
NO.	BY:	DATE:	NO.	BY:	DATE:	
1			3			S1-19
2			4			

3/22/2022 1:15:26 PM User: blanning File: I:\5987A\Structures\401.037.I5987A.SMU.CP2.770151.dgn

DRAWN BY : B.E. LANNING DATE : 03/2021  
 CHECKED BY : A.K. ORR DATE : 03/2021  
 DESIGN ENGINEER OF RECORD : A.K. ORR DATE : 03/2022