

5/28/99

NOTES:  
 1. LOCATION AND DEPTHS OF EXISTING UTILITIES ARE APPROXIMATE. CONTRACTOR TO FIELD VERIFY LOCATIONS AND DEPTHS PRIOR TO WATER LINE CONSTRUCTION.  
 2. CONTRACTOR TO BACKFILL OVER WATER LINE PRIOR TO TESTING AND PLACING INTO SERVICE. MINIMUM 30" OF COVER FROM -WLF- STATION 16+50.00 TO 29+25.00.

SCALE: 1" = 50' HORIZONTAL  
 1" = 10' VERTICAL

**PROP. 6" WATER LINE -WLF- ROBESON COUNTY**

- WLF- CONSTRUCTION SEQUENCE:  
 1. INSTALL VALVES ON EXISTING WATER LINE CLOSE TO EXISTING WATER SERVICES FOR PARCELS 75 & 79, ON THE SIDE CLOSEST TO THE PROPOSED 66" RCP STORM DRAIN.  
 2. ONCE THE PROPOSED 66" RCP STORM DRAIN IS INSTALLED AND THE NEW RUSS ROAD IS ROUGH GRADED, INSTALL PROPOSED WATER LINE ALONG THE NEW RUSS ROAD.  
 3. UPON ACTIVATION OF NEW WATER LINE, TRANSFER WATER SERVICES TO NEW WATER LINE.  
 4. ABANDON EXISTING WATER LINE ALONG THE OLD RUSS ROAD.

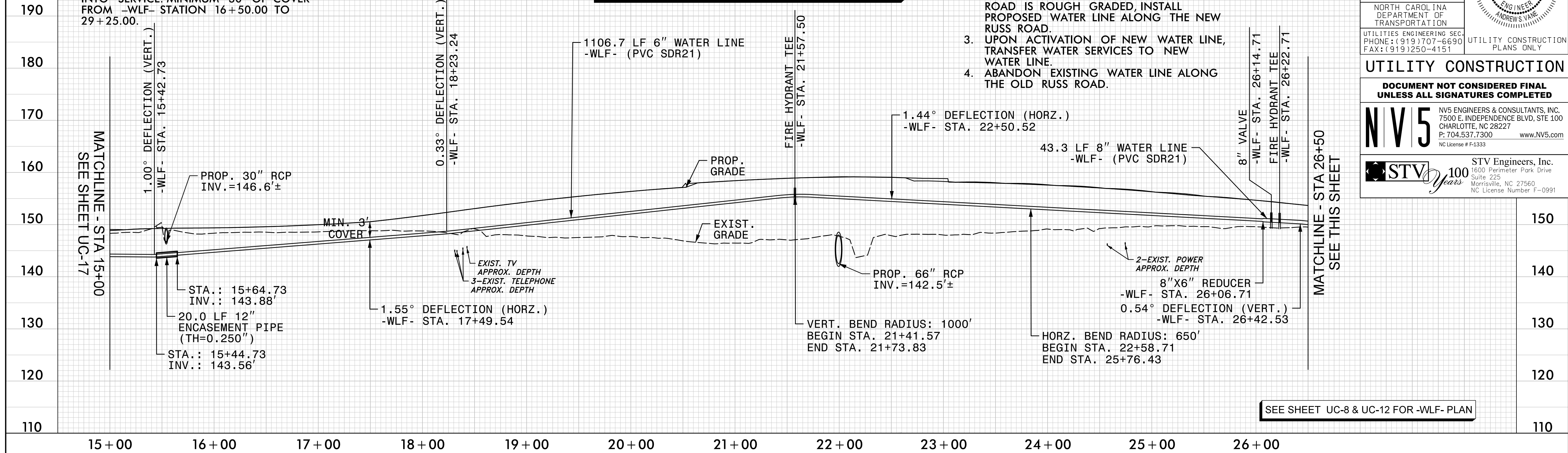
PROJECT REFERENCE NO.	SHEET NO.
I-5987A	UC-18
DESIGNED BY: ABN	
DRAWN BY: ABN	
CHECKED BY: ASV	
APPROVED BY:	
REVISED:	
NORTH CAROLINA DEPARTMENT OF TRANSPORTATION	
UTILITIES ENGINEERING SEC. PHONE: (919) 707-6690 FAX: (919) 250-4151	UTILITY CONSTRUCTION PLANS ONLY

**UTILITY CONSTRUCTION**

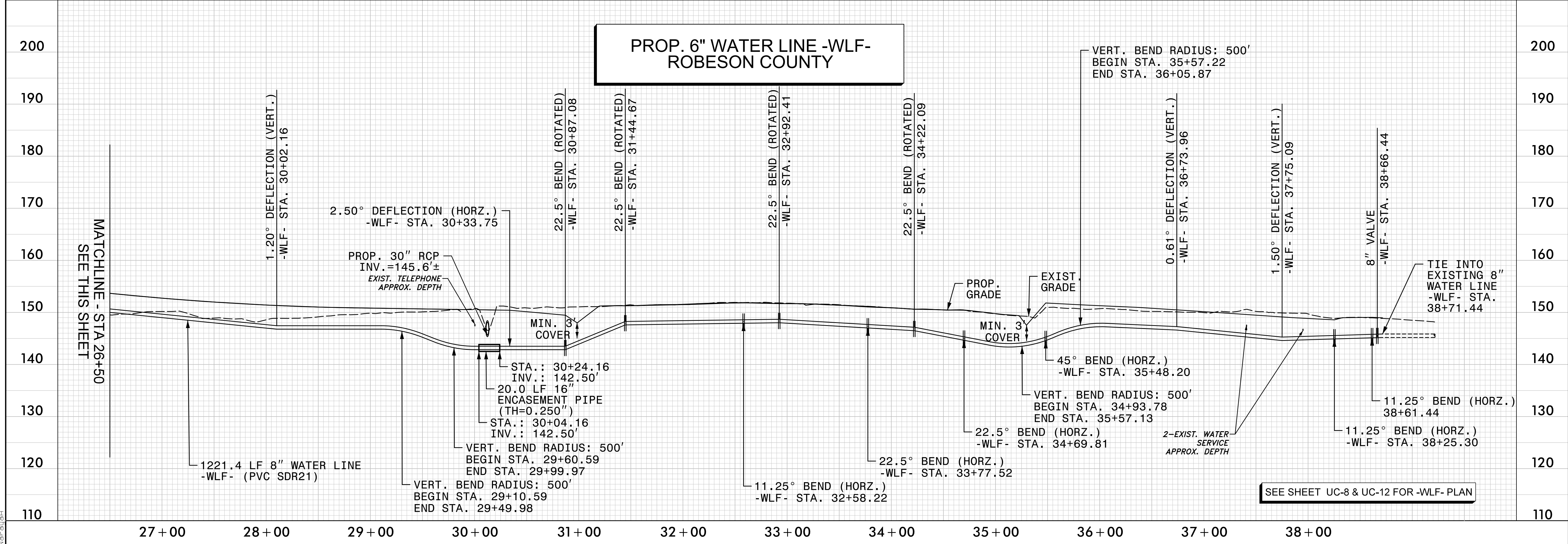
DOCUMENT NOT CONSIDERED FINAL UNLESS ALL SIGNATURES COMPLETED

**NV5** NV5 ENGINEERS & CONSULTANTS, INC. 7500 E. INDEPENDENCE BLVD, STE 100 CHARLOTTE, NC 28227 P: 704.537.7300 www.NV5.com NC License # F-1333

**STV 100 Years** STV Engineers, Inc. 1600 Perimeter Park Drive Suite 225 Morrisville, NC 27560 NC License Number F-0991



SEE SHEET UC-8 & UC-12 FOR -WLF- PLAN



SEE SHEET UC-8 & UC-12 FOR -WLF- PLAN

4/6/2022  
 F:\Utilities\Engineering\UC\Proj\Sheet\I-5987A\_ut\_pf1\_UC18\_pah.dgn  
 Norcauch