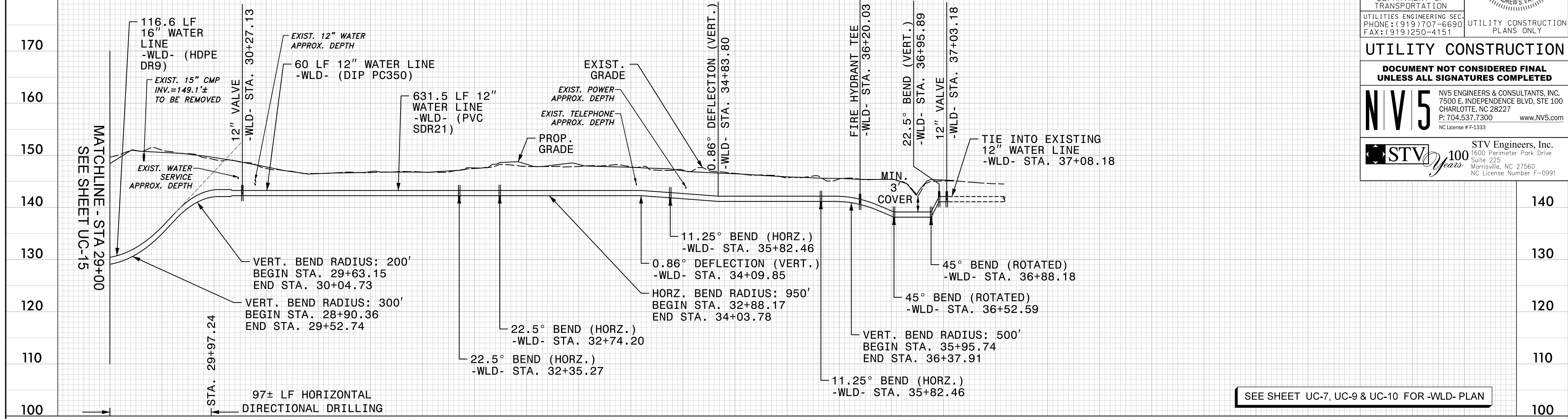


5/28/99

SCALE: 1" = 50' HORIZONTAL
1" = 10' VERTICAL

NOTES:
1. LOCATION AND DEPTHS OF EXISTING UTILITIES ARE APPROXIMATE. CONTRACTOR TO FIELD VERIFY LOCATIONS AND DEPTHS PRIOR TO WATER LINE CONSTRUCTION.

PROP. 8" WATER LINE -WLD- ROBESON COUNTY POWERSVILLE ROAD



PROJECT REFERENCE NO.	SHEET NO.
I-5987A	UC-16
DESIGNED BY: ABN	
DRAWN BY: ABN	
CHECKED BY: ASV	
APPROVED BY:	
REVISED:	
NORTH CAROLINA DEPARTMENT OF TRANSPORTATION	
UTILITIES ENGINEERING SEC. PHONE: (919) 707-6690 FAX: (919) 250-4151	
UTILITY CONSTRUCTION PLANS ONLY	

UTILITY CONSTRUCTION

DOCUMENT NOT CONSIDERED FINAL UNLESS ALL SIGNATURES COMPLETED

NV5 NV5 ENGINEERS & CONSULTANTS, INC.
7500 E. INDEPENDENCE BLVD, STE 100
CHARLOTTE, NC 28227
P: 704.537.7300 www.NV5.com
NC License # F-1333

STV 100 Years STV Engineers, Inc.
1600 Perimeter Park Drive
Suite 225
Morrisville, NC 27560
NC License Number F-0991

4/6/2022
F:\Utilities\Engineering\UC\Proj\Sheet\I-5987A_ut_pfl_UC16_pah.dgn
Norcaugh

PROP. 8" WATER LINE -WLE- ROBESON COUNTY

