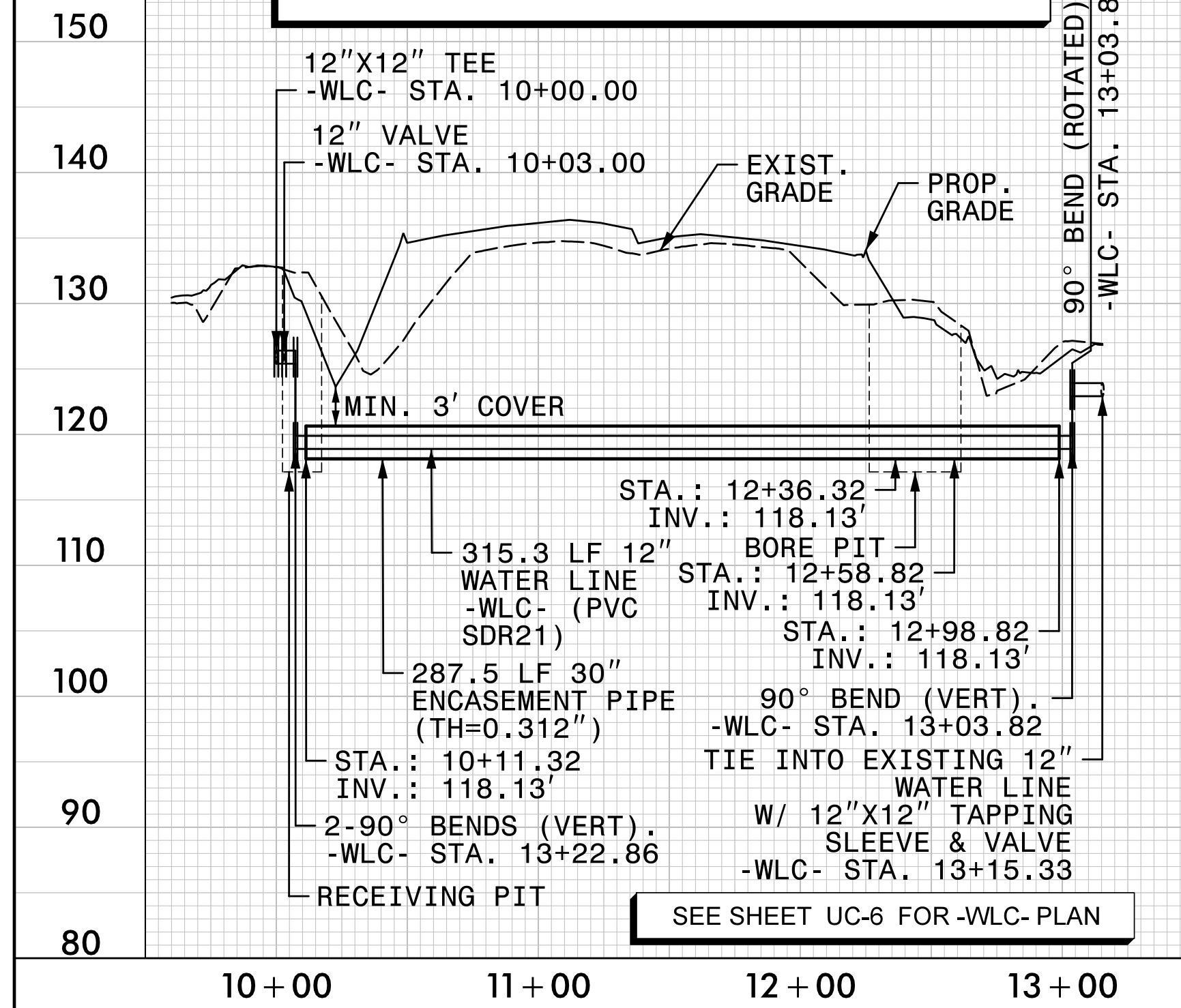


5/28/2022

SCALE: 1" = 50' HORIZONTAL
1" = 10' VERTICAL

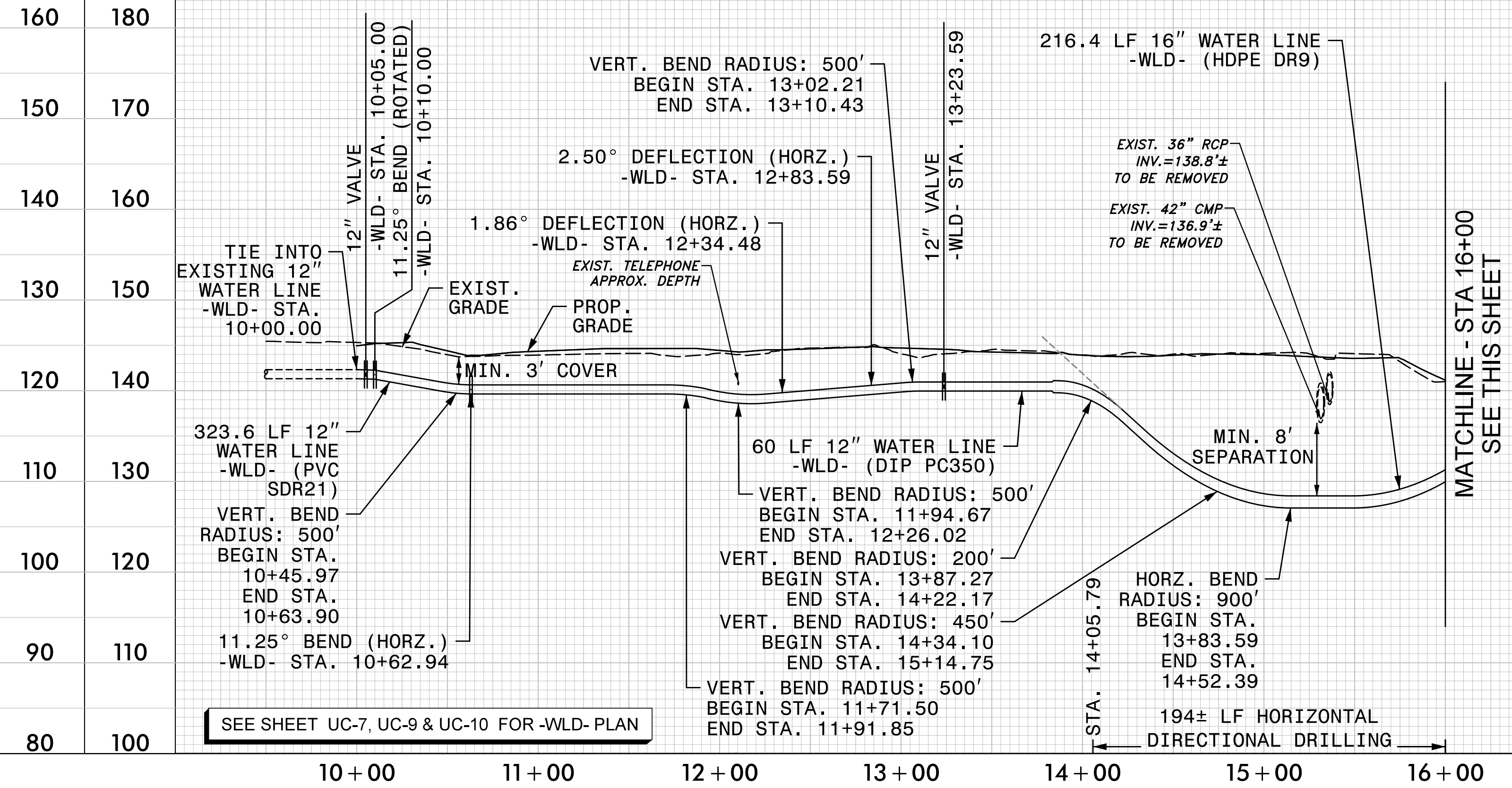
NOTES:
1. LOCATION AND DEPTHS OF EXISTING UTILITIES ARE APPROXIMATE. CONTRACTOR TO FIELD VERIFY LOCATIONS AND DEPTHS PRIOR TO WATER LINE CONSTRUCTION.

PROP. 12" WATER LINE -WLC- CITY OF LUMBERTON



SEE SHEET UC-6 FOR -WLC- PLAN

PROP. 8" WATER LINE -WLD- ROBESON COUNTY POWERSVILLE ROAD



SEE SHEET UC-7, UC-9 & UC-10 FOR -WLD- PLAN

PROJECT REFERENCE NO.	I-5987A	SHEET NO.	UC-15
DESIGNED BY:	ABN		
DRAWN BY:	ABN		
CHECKED BY:	ASV		
APPROVED BY:			
REVISED:		NORTH CAROLINA DEPARTMENT OF TRANSPORTATION	
UTILITIES ENGINEERING SEC. PHONE: (919) 707-6690 FAX: (919) 250-4151		UTILITY CONSTRUCTION PLANS ONLY	

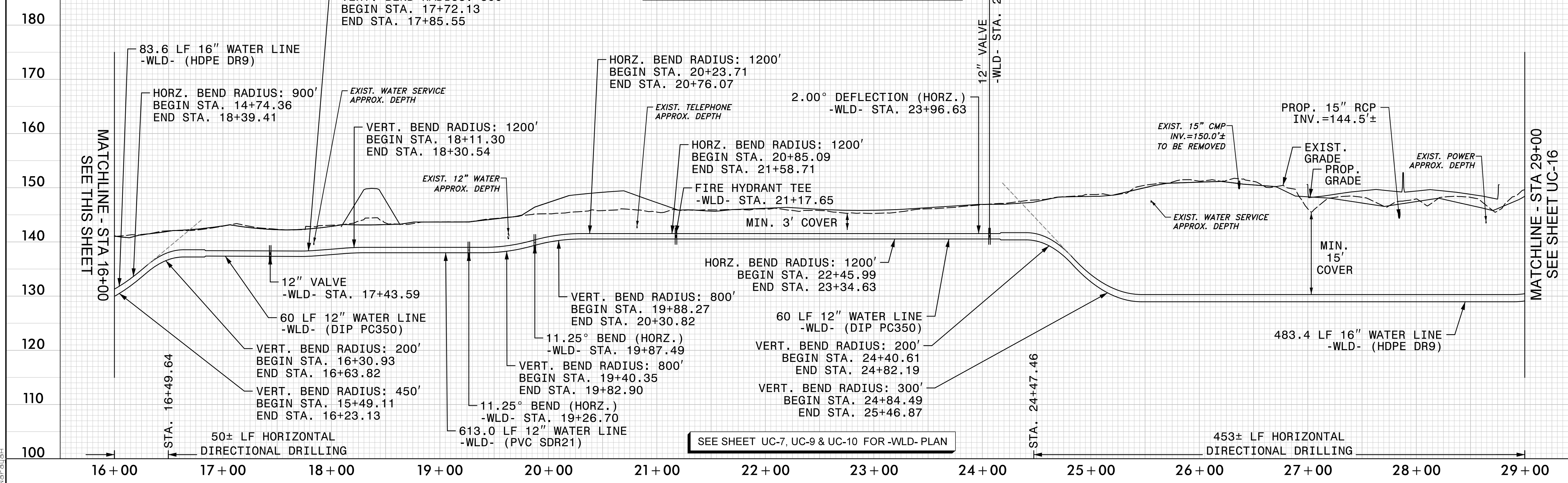
UTILITY CONSTRUCTION
DOCUMENT NOT CONSIDERED FINAL UNLESS ALL SIGNATURES COMPLETED

NV5
NV5 ENGINEERS & CONSULTANTS, INC.
7500 E. INDEPENDENCE BLVD, STE 100
CHARLOTTE, NC 28227
P: 704.537.7300 www.nv5.com
NC License # F-1333

STV 100 Years
STV Engineers, Inc.
1600 Perimeter Park Drive
Suite 225
Morrisville, NC 27560
NC License Number F-0991

MATCHLINE - STA 16+00
SEE THIS SHEET

PROP. 8" WATER LINE -WLD- ROBESON COUNTY POWERSVILLE ROAD



SEE SHEET UC-7, UC-9 & UC-10 FOR -WLD- PLAN

MATCHLINE - STA 16+00
SEE THIS SHEET

MATCHLINE - STA 29+00
SEE SHEET UC-16

4/6/2022
F:\Utilities\Engineering\UC\Proj\Sheet\I-5987A_ut_pfl_UC15_psh.dgn
Norcaugh