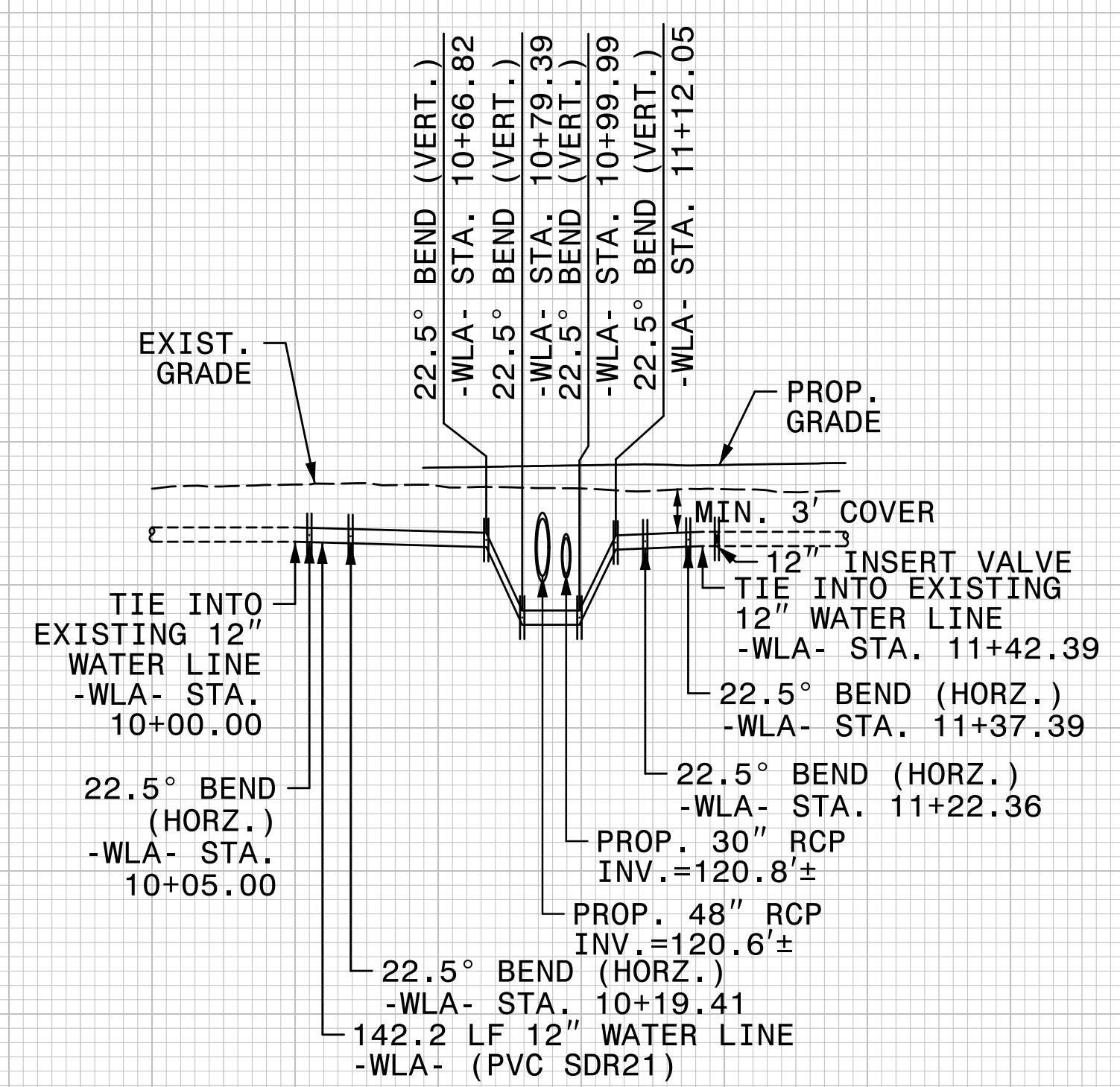


5/28/99

NOTES:
 1. LOCATION AND DEPTHS OF EXISTING UTILITIES ARE APPROXIMATE. CONTRACTOR TO FIELD VERIFY LOCATIONS AND DEPTHS PRIOR TO FORCE MAIN & WATER LINE CONSTRUCTION.
 2. CONTRACTOR TO BACKFILL OVER WATER LINE PRIOR TO TESTING AND PLACING INTO SERVICE. MINIMUM 30" OF COVER FROM -WLB- STATION 12+10.00 TO 14+60.00.

SCALE: 1" = 50' HORIZONTAL
 1" = 10' VERTICAL

**PROP. 12" WATER LINE -WLA-
 CITY OF LUMBERTON
 DAWN DRIVE**



PROJECT REFERENCE NO.	SHEET NO.
I-5987A	UC-14
DESIGNED BY: ABN	
DRAWN BY: ABN	
CHECKED BY: ASV	
APPROVED BY:	
REVISED BY:	
NORTH CAROLINA DEPARTMENT OF TRANSPORTATION	
UTILITIES ENGINEERING SEC. PHONE: (919) 707-6690 FAX: (919) 250-4151	
UTILITY CONSTRUCTION PLANS ONLY	

UTILITY CONSTRUCTION

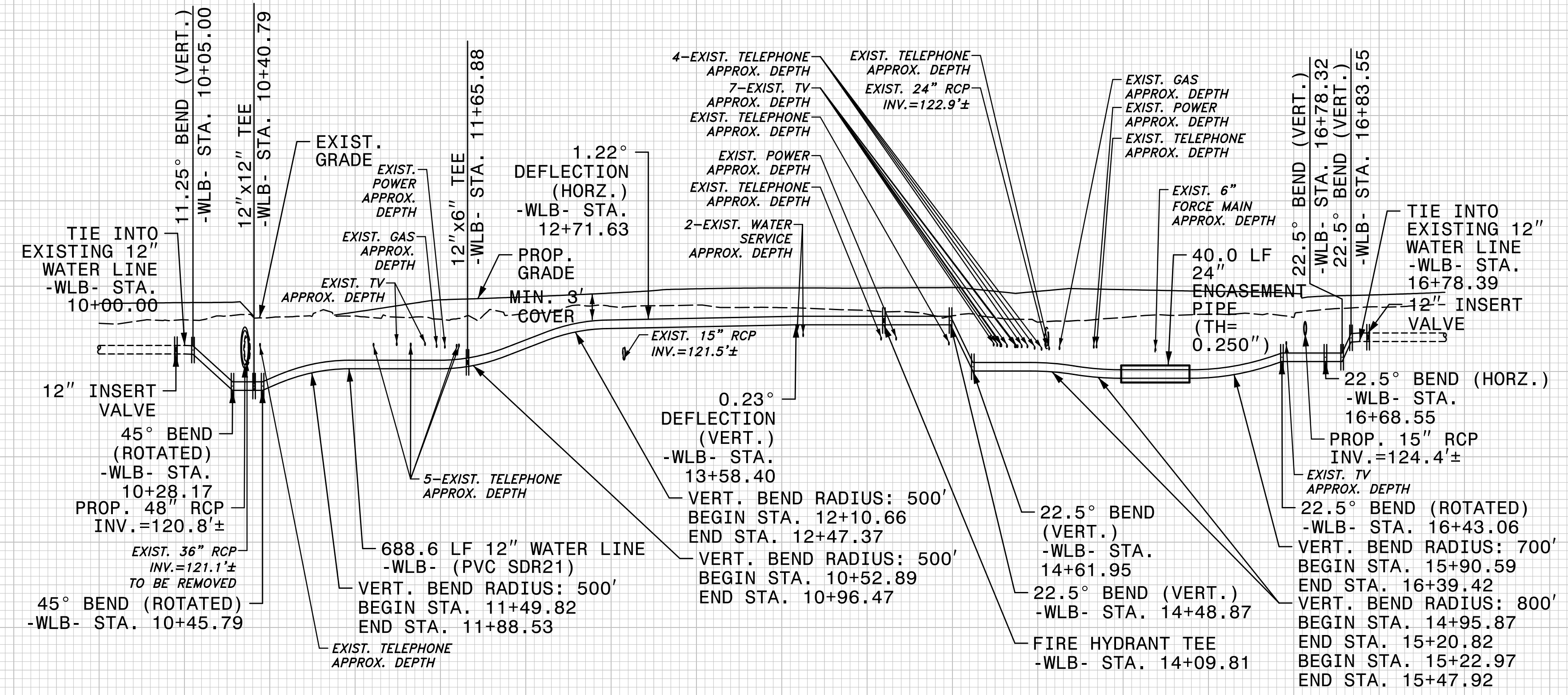
**DOCUMENT NOT CONSIDERED FINAL
 UNLESS ALL SIGNATURES COMPLETED**

NV5 NV5 ENGINEERS & CONSULTANTS, INC.
 7500 E. INDEPENDENCE BLVD, STE 100
 CHARLOTTE, NC 28227
 P: 704.537.7300 www.NV5.com
 NC License # F-1333

STV 100 Years STV Engineers, Inc.
 1600 Perimeter Park Drive
 Suite 225
 Morrisville, NC 27560
 NC License Number F-0991

SEE SHEET UC-4 FOR -WLA- PLAN

**PROP. 12" WATER LINE -WLB-
 CITY OF LUMBERTON
 DAWN DRIVE**



SEE SHEET UC-4 & UC-5 FOR -WLB- PLAN

4/6/2022
 F:\Utilities\Engineering\UC\Proj\Sheet\I-5987A_ut_pfl_UC14_psh.dgn
 Norcaugh