

5/28/99

NOTES:  
 1. LOCATION AND DEPTHS OF EXISTING UTILITIES ARE APPROXIMATE. CONTRACTOR TO FIELD VERIFY LOCATIONS AND DEPTHS PRIOR TO FORCE MAIN & WATER LINE CONSTRUCTION.  
 SCALE: 1" = 50' HORIZONTAL  
 1" = 10' VERTICAL

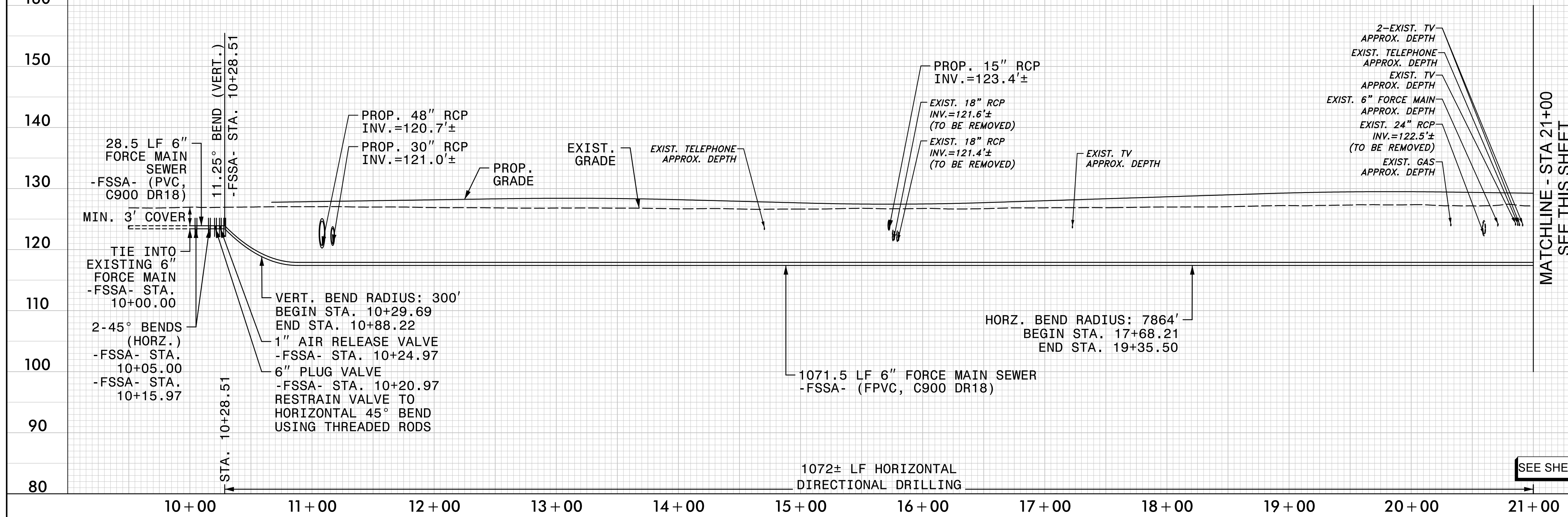
**PROP. 6" FORCE MAIN -FSSA-  
 CITY OF LUMBERTON  
 DAWN DRIVE**

PROJECT REFERENCE NO.	SHEET NO.
I-5987A	UC-13
DESIGNED BY: ABN	
DRAWN BY: ABN	
CHECKED BY: ASV	
APPROVED BY:	
REVISED:	
NORTH CAROLINA DEPARTMENT OF TRANSPORTATION	
UTILITIES ENGINEERING SEC. PHONE: (919) 707-6690 FAX: (919) 250-4151	
UTILITY CONSTRUCTION PLANS ONLY	

**UTILITY CONSTRUCTION**  
 DOCUMENT NOT CONSIDERED FINAL  
 UNLESS ALL SIGNATURES COMPLETED

**NV5**  
 NV5 ENGINEERS & CONSULTANTS, INC.  
 7500 E. INDEPENDENCE BLVD, STE 100  
 CHARLOTTE, NC 28227  
 P: 704.537.7300 www.NV5.com  
 NC License # F-1333

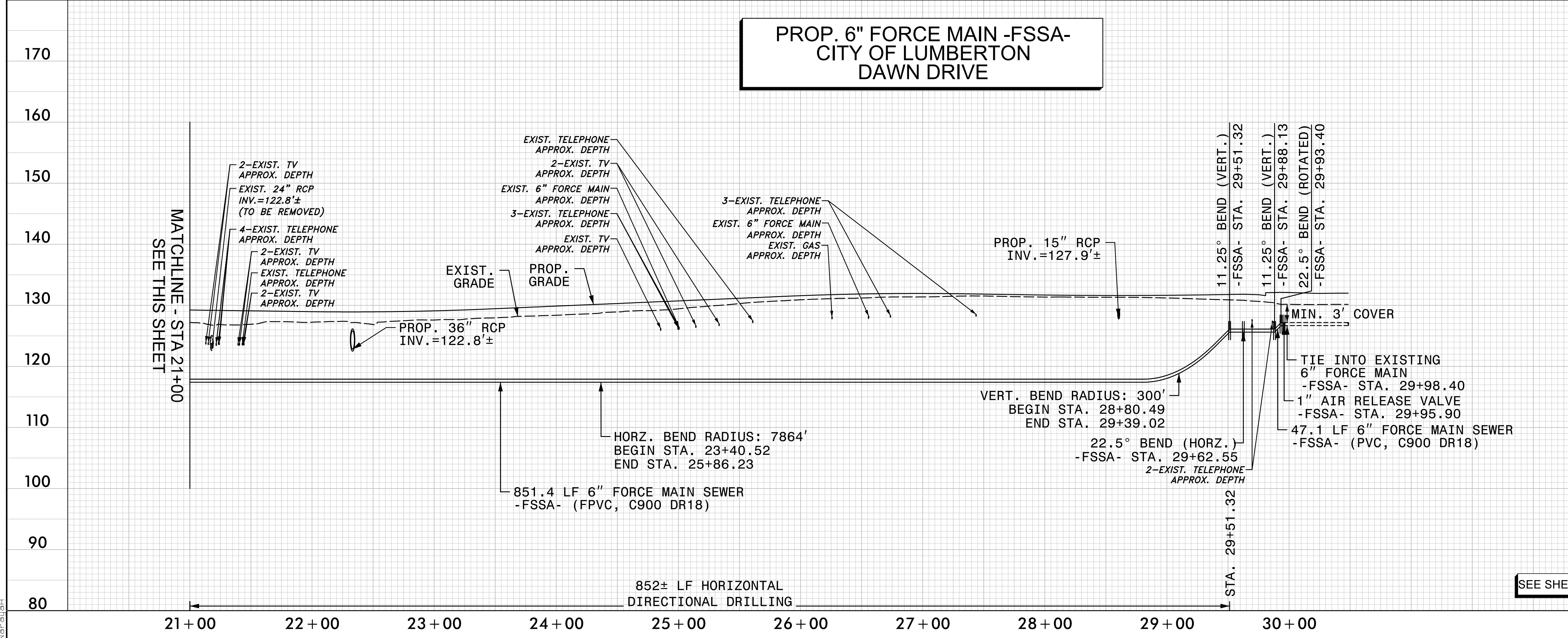
**STV 100 Years**  
 STV Engineers, Inc.  
 1600 Perimeter Park Drive  
 Suite 225  
 Morrisville, NC 27560  
 NC License Number F-0991



MATCHLINE - STA 21+00  
 SEE THIS SHEET

SEE SHEET UC-4 & UC-5 FOR -FSSA- PLAN

**PROP. 6" FORCE MAIN -FSSA-  
 CITY OF LUMBERTON  
 DAWN DRIVE**



MATCHLINE - STA 21+00  
 SEE THIS SHEET

SEE SHEET UC-4 & UC-5 FOR -FSSA- PLAN

4/6/2022  
 F:\Utilities\Engineering\UC\Proj\Sheet\I-5987A\_ut\_pf1\_UC13\_psh.dgn  
 Norcaugh