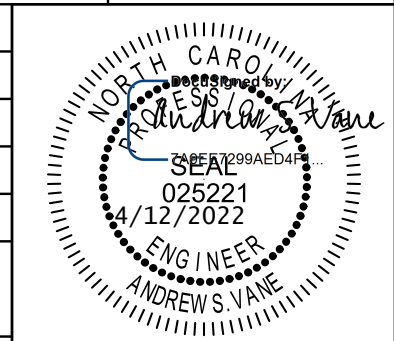


5/14/2022

THE ESTIMATED QUANTITY OF DUCTILE IRON WATER FITTINGS ON THIS PLAN SHEET IS 920 POUNDS. THE ACTUAL QUANTITY AND TYPE OF FITTINGS WILL VARY BASED ON FIELD CONDITIONS.

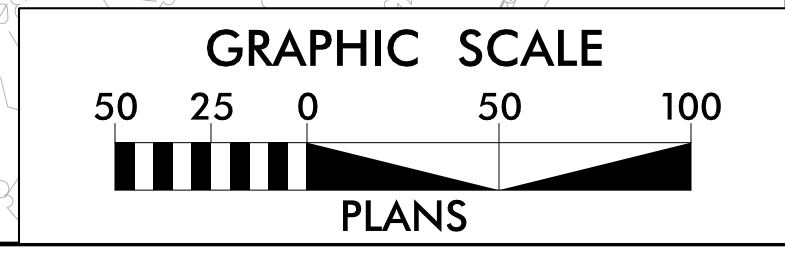
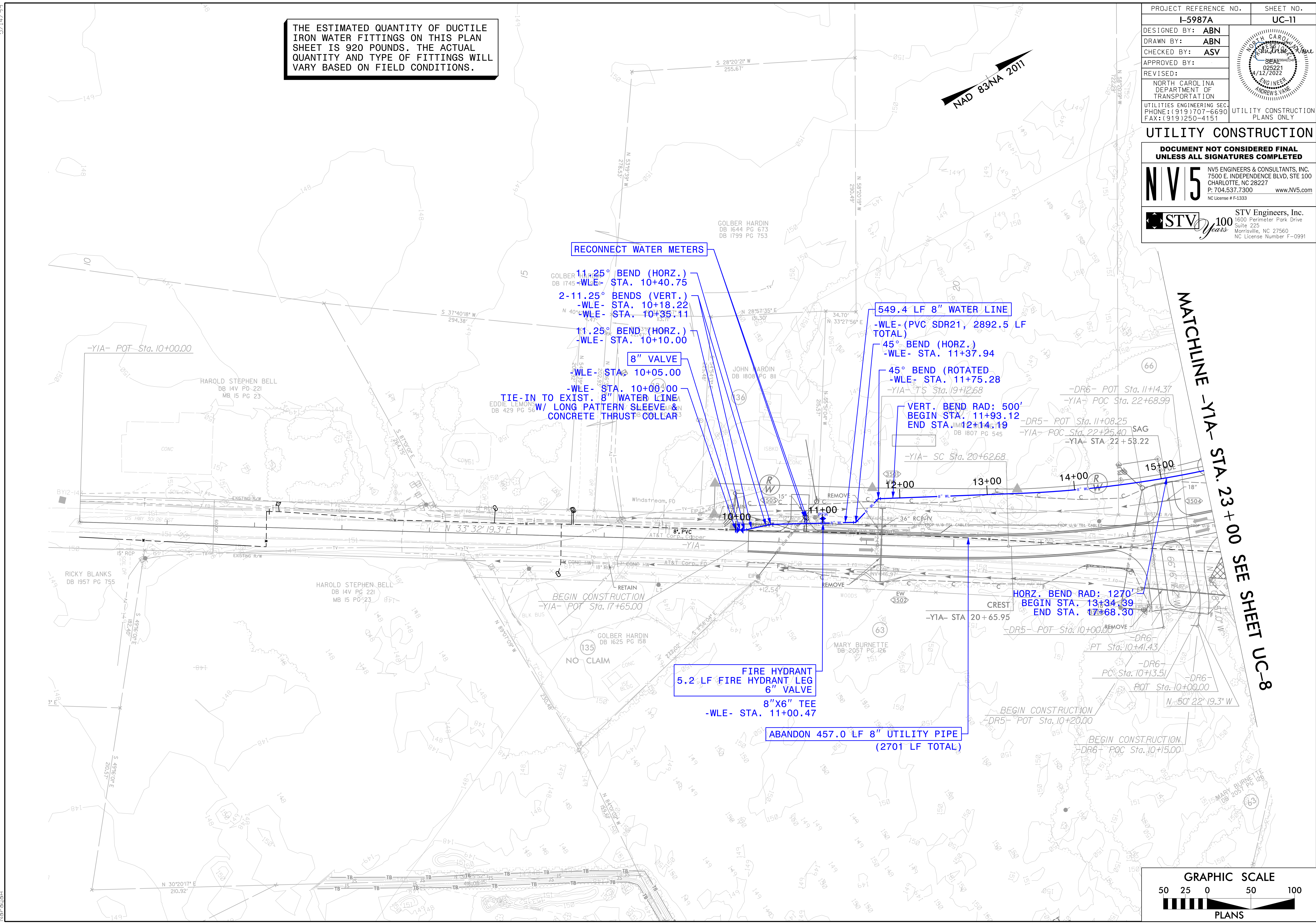
PROJECT REFERENCE NO.	SHEET NO.
I-5987A	UC-11
DESIGNED BY: ABN	
DRAWN BY: ABN	
CHECKED BY: ASV	
APPROVED BY:	
REVISED:	
NORTH CAROLINA DEPARTMENT OF TRANSPORTATION	
UTILITIES ENGINEERING SEC. PHONE: (919) 707-6690 FAX: (919) 250-4151	
UTILITY CONSTRUCTION PLANS ONLY	

UTILITY CONSTRUCTION

DOCUMENT NOT CONSIDERED FINAL UNLESS ALL SIGNATURES COMPLETED

NV5 NV5 ENGINEERS & CONSULTANTS, INC.
7500 E. INDEPENDENCE BLVD, STE 100
CHARLOTTE, NC 28227
P: 704.537.7300 www.NV5.com
NC License # F-1333

STV 100 Years STV Engineers, Inc.
1600 Perimeter Park Drive
Suite 225
Morriseville, NC 27560
NC License Number F-0991



4/6/2022
P:\Utilities\Engineering\UC\Proj\Sheet\I-5987A_ut_UC11_psh.dgn
Narasah