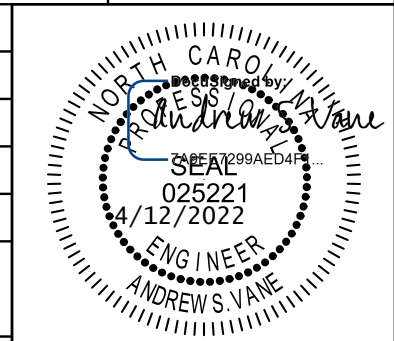



PROJECT REFERENCE NO.	SHEET NO.
I-5987A	UC-9
DESIGNED BY: ABN	
DRAWN BY: ABN	
CHECKED BY: ASV	
APPROVED BY:	
REVISED:	
NORTH CAROLINA DEPARTMENT OF TRANSPORTATION	
UTILITIES ENGINEERING SEC. PHONE: (919) 707-6690 FAX: (919) 250-4151	
UTILITY CONSTRUCTION PLANS ONLY	

**UTILITY CONSTRUCTION**

**DOCUMENT NOT CONSIDERED FINAL UNLESS ALL SIGNATURES COMPLETED**

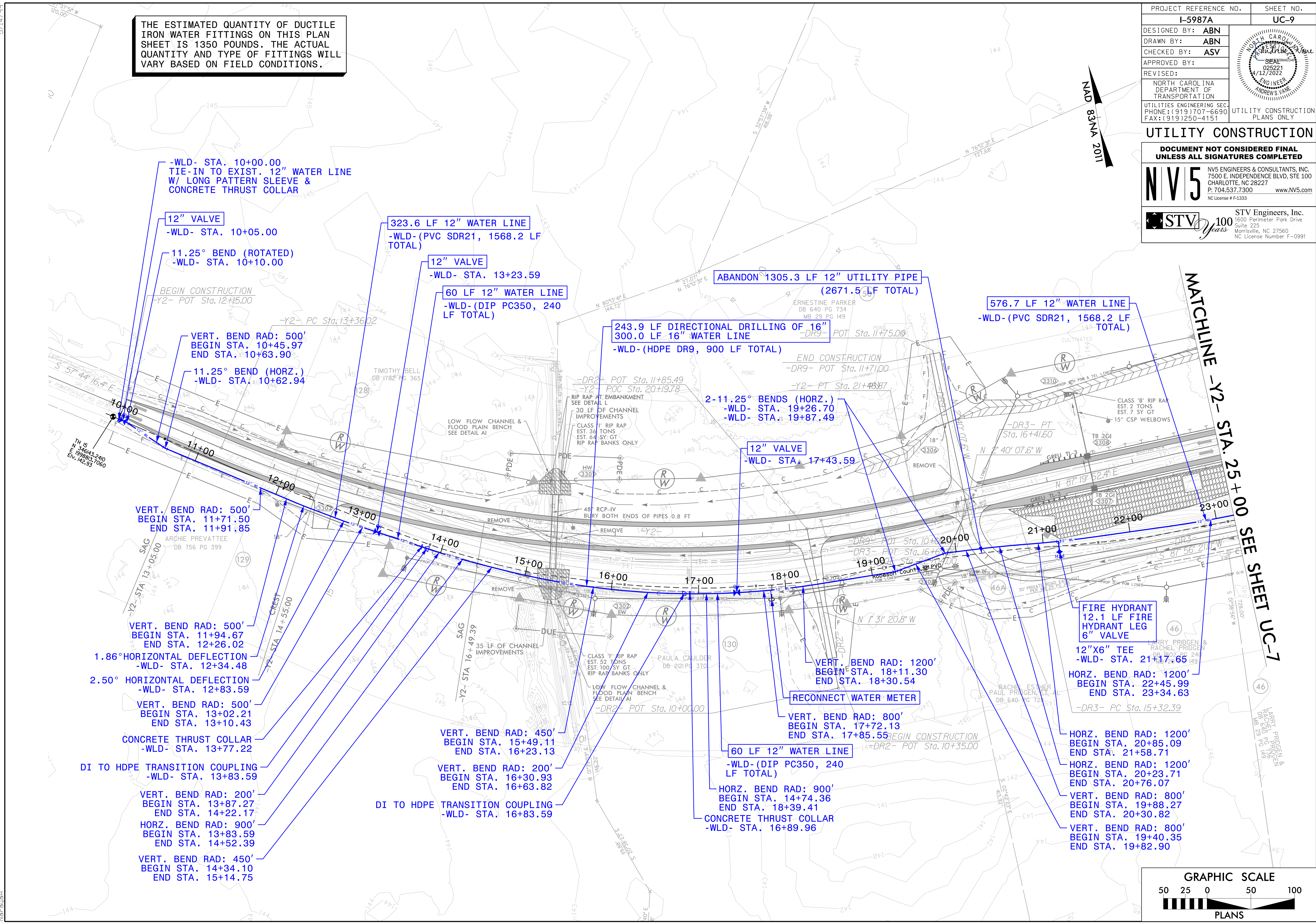
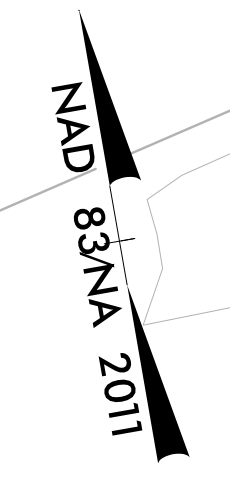


NV5 ENGINEERS & CONSULTANTS, INC.  
7500 E. INDEPENDENCE BLVD, STE 100  
CHARLOTTE, NC 28227  
P: 704.537.7300 www.NV5.com  
NC License # F-1333



STV Engineers, Inc.  
1600 Perimeter Park Drive  
Suite 225  
Morrisville, NC 27560  
NC License Number F-0991

THE ESTIMATED QUANTITY OF DUCTILE IRON WATER FITTINGS ON THIS PLAN SHEET IS 1350 POUNDS. THE ACTUAL QUANTITY AND TYPE OF FITTINGS WILL VARY BASED ON FIELD CONDITIONS.



-WLD- STA. 10+00.00  
TIE-IN TO EXIST. 12" WATER LINE  
W/ LONG PATTERN SLEEVE &  
CONCRETE THRUST COLLAR

12" VALVE  
-WLD- STA. 10+05.00

11.25° BEND (ROTATED)  
-WLD- STA. 10+10.00

BEGIN CONSTRUCTION  
-Y2- POT Sta. 12+15.00

VERT. BEND RAD: 500'  
BEGIN STA. 10+45.97  
END STA. 10+63.90

11.25° BEND (HORZ.)  
-WLD- STA. 10+62.94

323.6 LF 12" WATER LINE  
-WLD- (PVC SDR21, 1568.2 LF  
TOTAL)

12" VALVE  
-WLD- STA. 13+23.59

60 LF 12" WATER LINE  
-WLD- (DIP PC350, 240  
LF TOTAL)

ABANDON 1305.3 LF 12" UTILITY PIPE  
(2671.5 LF TOTAL)

243.9 LF DIRECTIONAL DRILLING OF 16"  
300.0 LF 16" WATER LINE  
-WLD- (HDPE DR9, 900 LF TOTAL)

576.7 LF 12" WATER LINE  
-WLD- (PVC SDR21, 1568.2 LF  
TOTAL)

2-11.25° BENDS (HORZ.)  
-WLD- STA. 19+26.70  
-WLD- STA. 19+87.49

12" VALVE  
-WLD- STA. 17+43.59

VERT. BEND RAD: 500'  
BEGIN STA. 11+71.50  
END STA. 11+91.85

VERT. BEND RAD: 500'  
BEGIN STA. 11+94.67  
END STA. 12+26.02

1.86° HORIZONTAL DEFLECTION  
-WLD- STA. 12+34.48

2.50° HORIZONTAL DEFLECTION  
-WLD- STA. 12+83.59

VERT. BEND RAD: 500'  
BEGIN STA. 13+02.21  
END STA. 13+10.43

CONCRETE THRUST COLLAR  
-WLD- STA. 13+77.22

DI TO HDPE TRANSITION COUPLING  
-WLD- STA. 13+83.59

VERT. BEND RAD: 200'  
BEGIN STA. 13+87.27  
END STA. 14+22.17

HORZ. BEND RAD: 900'  
BEGIN STA. 13+83.59  
END STA. 14+52.39

VERT. BEND RAD: 450'  
BEGIN STA. 14+34.10  
END STA. 15+14.75

VERT. BEND RAD: 450'  
BEGIN STA. 15+49.11  
END STA. 16+23.13

VERT. BEND RAD: 200'  
BEGIN STA. 16+30.93  
END STA. 16+63.82

DI TO HDPE TRANSITION COUPLING  
-WLD- STA. 16+83.59

60 LF 12" WATER LINE  
-WLD- (DIP PC350, 240  
LF TOTAL)

HORZ. BEND RAD: 900'  
BEGIN STA. 14+74.36  
END STA. 18+39.41

CONCRETE THRUST COLLAR  
-WLD- STA. 16+89.96

VERT. BEND RAD: 1200'  
BEGIN STA. 18+11.30  
END STA. 18+30.54

RECONNECT WATER METER

VERT. BEND RAD: 800'  
BEGIN STA. 17+72.13  
END STA. 17+85.55

FIRE HYDRANT  
12.1 LF FIRE  
HYDRANT LEG  
6" VALVE

12"X6" TEE  
-WLD- STA. 21+77.65

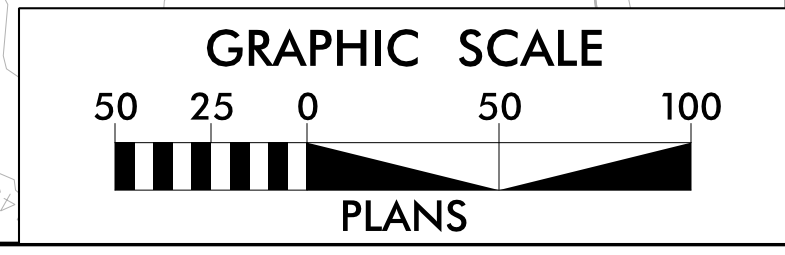
HORZ. BEND RAD: 1200'  
BEGIN STA. 22+45.99  
END STA. 23+34.63

HORZ. BEND RAD: 1200'  
BEGIN STA. 20+85.09  
END STA. 21+58.71

HORZ. BEND RAD: 1200'  
BEGIN STA. 20+23.71  
END STA. 20+76.07

VERT. BEND RAD: 800'  
BEGIN STA. 19+88.27  
END STA. 20+30.82

VERT. BEND RAD: 800'  
BEGIN STA. 19+40.35  
END STA. 19+82.90



5/14/2022  
R:\Utilities\Engineering\UC\Proj\Sheet\I-5987A UC-9\_psh.dgn  
Narasah