

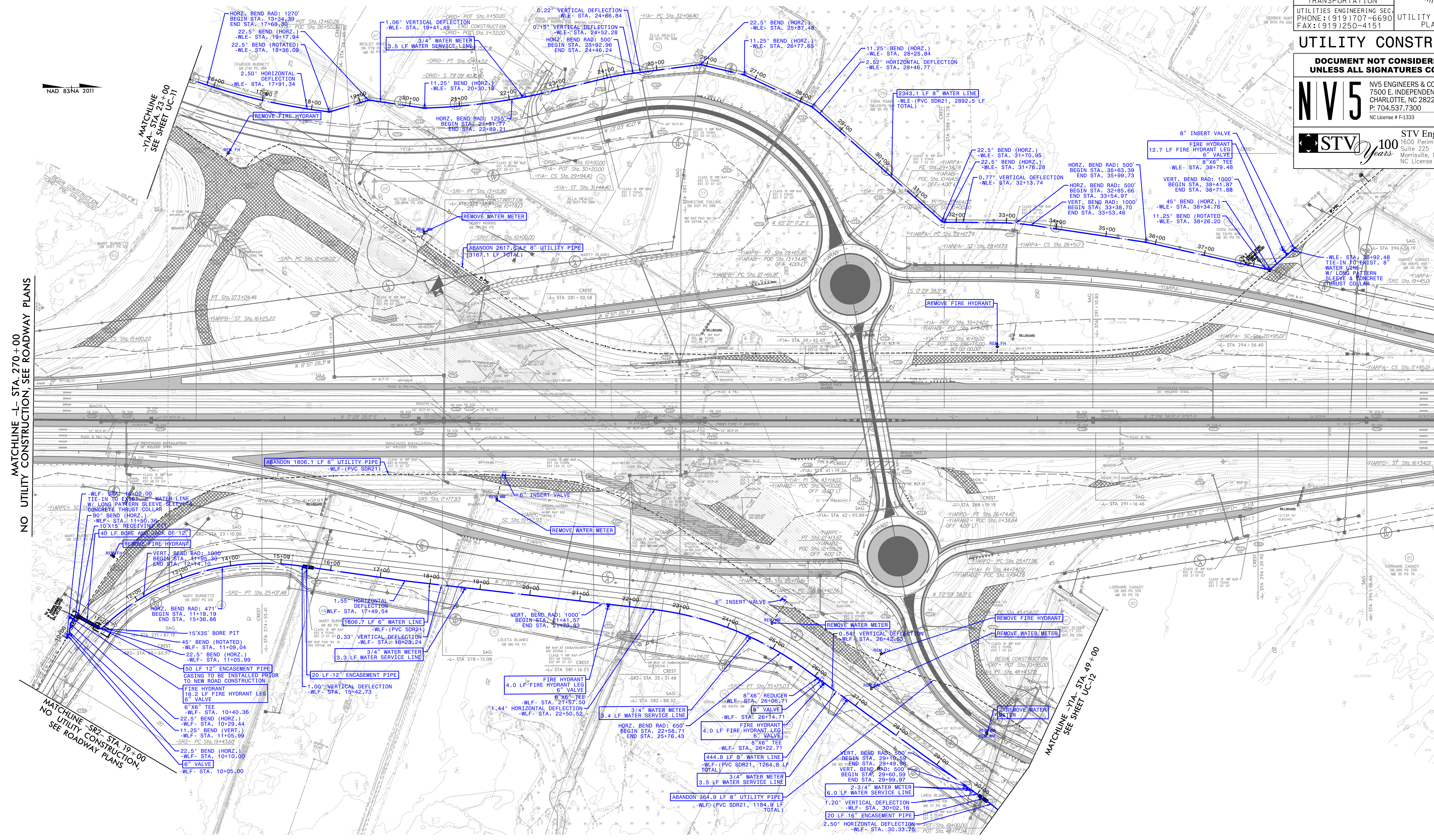
PROJECT REFERENCE NO.	SHEET NO.
I-5987A	UC-8
DESIGNED BY: ABN	
DRAWN BY: ABN	
CHECKED BY: ASV	
APPROVED BY:	
REVISED:	NORTH CAROLINA DEPARTMENT OF TRANSPORTATION
UTILITIES ENGINEERING SEC. PHONE: (919) 707-6690 FAX: (919) 250-4151	UTILITY CONSTRUCTION PLANS ONLY

UTILITY CONSTRUCTION

DOCUMENT NOT CONSIDERED FINAL UNLESS ALL SIGNATURES COMPLETED

NV5 NV5 ENGINEERS & CONSULTANTS, INC.
7500 E. INDEPENDENCE BLVD, STE 100
CHARLOTTE, NC 28227
P: 704.537.7300 www.NV5.com
NC License # F-1333

STV 100 Years STV Engineers, Inc.
1600 Perimeter Park Drive
Suite 225
Morrisville, NC 27560
NC License Number F-0991



MATCHLINE -L- STA. 270+00
NO UTILITY CONSTRUCTION, SEE ROADWAY PLANS

MATCHLINE -L- STA. 298+00
NO UTILITY CONSTRUCTION, SEE ROADWAY PLANS

MATCHLINE -SR2- STA. 19+00
NO UTILITY CONSTRUCTION, SEE ROADWAY PLANS

MATCHLINE -YIA- STA. 49+00
SEE SHEET UC-12

THE ESTIMATED QUANTITY OF DUCTILE IRON WATER FITTINGS ON THIS PLAN SHEET IS 2405 POUNDS. THE ACTUAL QUANTITY AND TYPE OF FITTINGS WILL VARY BASED ON FIELD CONDITIONS.

