

5/14/2022

PROJECT REFERENCE NO.	SHEET NO.
I-5987A	UC-7
DESIGNED BY: ABN	
DRAWN BY: ABN	
CHECKED BY: ASV	
APPROVED BY:	
REVISED:	
NORTH CAROLINA DEPARTMENT OF TRANSPORTATION	
UTILITIES ENGINEERING SEC. PHONE: (919) 707-6690 FAX: (919) 250-4151	
UTILITY CONSTRUCTION PLANS ONLY	

UTILITY CONSTRUCTION

DOCUMENT NOT CONSIDERED FINAL UNLESS ALL SIGNATURES COMPLETED

**NV5**  
 NV5 ENGINEERS & CONSULTANTS, INC.  
 7500 E. INDEPENDENCE BLVD, STE 100  
 CHARLOTTE, NC 28227  
 P: 704.537.7300 www.NV5.com  
 NC License # F-1333

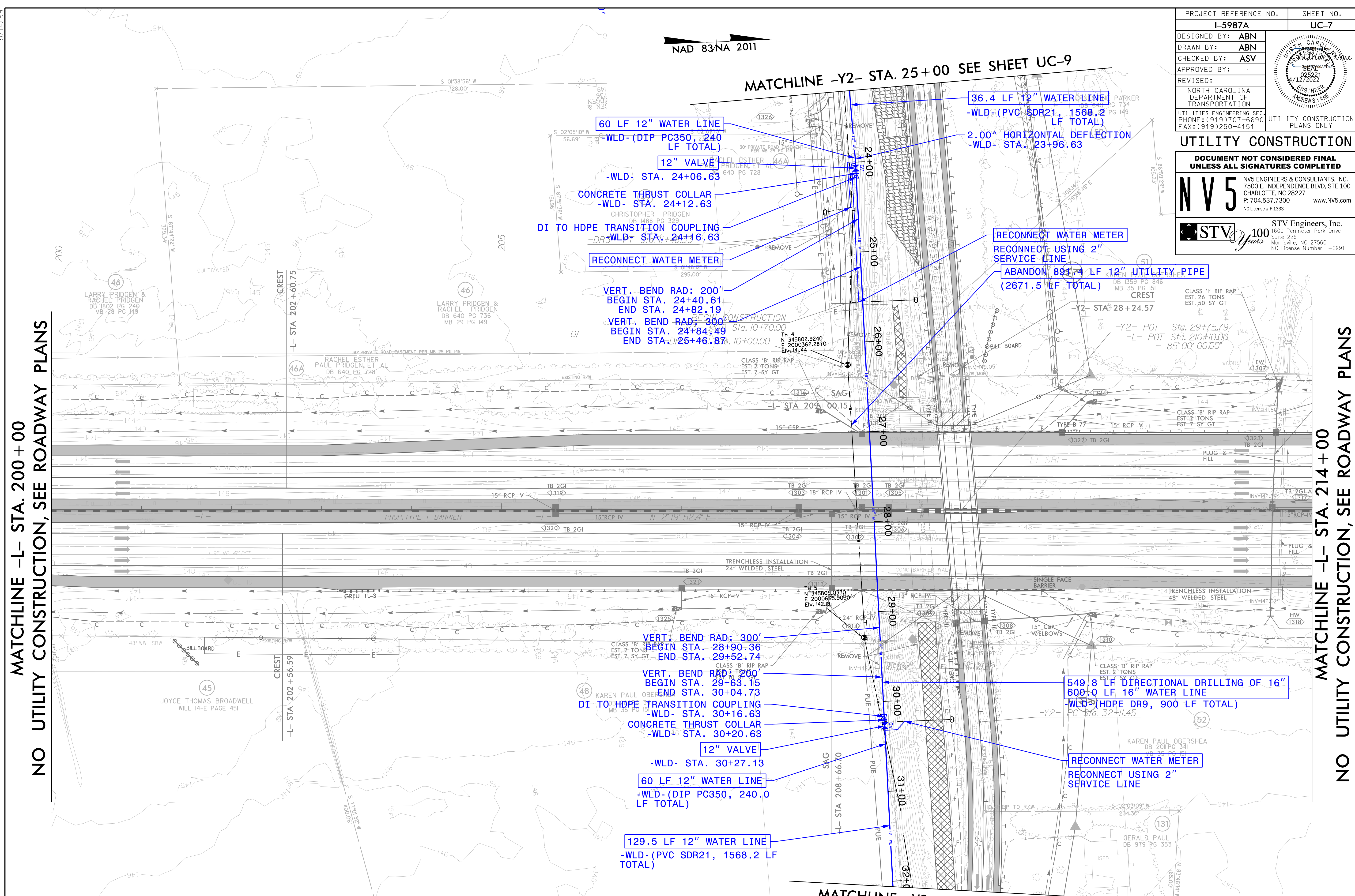
**STV 100 Years**  
 STV Engineers, Inc.  
 1600 Perimeter Park Drive  
 Suite 225  
 Morrisville, NC 27560  
 NC License Number F-0991



MATCHLINE -Y2- STA. 25+00 SEE SHEET UC-9

MATCHLINE -L- STA. 200+00  
NO UTILITY CONSTRUCTION, SEE ROADWAY PLANS

MATCHLINE -L- STA. 214+00  
NO UTILITY CONSTRUCTION, SEE ROADWAY PLANS



60 LF 12" WATER LINE  
-WLD- (DIP PC350, 240 LF TOTAL)

12" VALVE  
-WLD- STA. 24+06.63

CONCRETE THRUST COLLAR  
-WLD- STA. 24+12.63

DI TO HDPE TRANSITION COUPLING  
-WLD- STA. 24+16.63

RECONNECT WATER METER

VERT. BEND RAD: 200'  
BEGIN STA. 24+40.61  
END STA. 24+82.19

VERT. BEND RAD: 300'  
BEGIN STA. 24+84.49  
END STA. 25+46.87

36.4 LF 12" WATER LINE  
-WLD- (PVC SDR21, 1568.2 LF TOTAL)

2.00° HORIZONTAL DEFLECTION  
-WLD- STA. 23+96.63

RECONNECT WATER METER

RECONNECT USING 2" SERVICE LINE

ABANDON 891.74 LF 12" UTILITY PIPE  
(2671.5 LF TOTAL)

VERT. BEND RAD: 300'  
BEGIN STA. 28+90.36  
END STA. 29+52.74

VERT. BEND RAD: 200'  
BEGIN STA. 29+63.15  
END STA. 30+04.73

DI TO HDPE TRANSITION COUPLING  
-WLD- STA. 30+16.63

CONCRETE THRUST COLLAR  
-WLD- STA. 30+20.63

12" VALVE  
-WLD- STA. 30+27.13

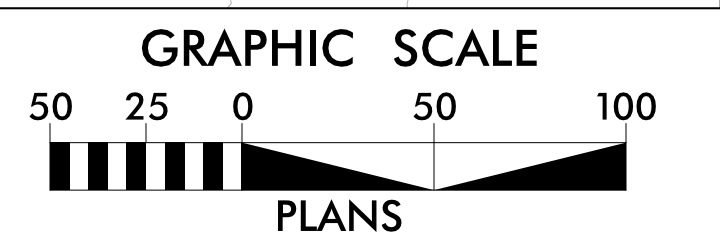
60 LF 12" WATER LINE  
-WLD- (DIP PC350, 240.0 LF TOTAL)

129.5 LF 12" WATER LINE  
-WLD- (PVC SDR21, 1568.2 LF TOTAL)

549.8 LF DIRECTIONAL DRILLING OF 16"  
600.0 LF 16" WATER LINE  
-WLD- (HDPE DR9, 900 LF TOTAL)

RECONNECT WATER METER  
RECONNECT USING 2" SERVICE LINE

MATCHLINE -Y2- STA. 34+00 SEE SHEET UC-10



4/6/2022  
F:\Utilities\Engineering\UC\Proj\Sheet\I-5987A\_ut\_UC07\_psh.dgn  
Narasah