

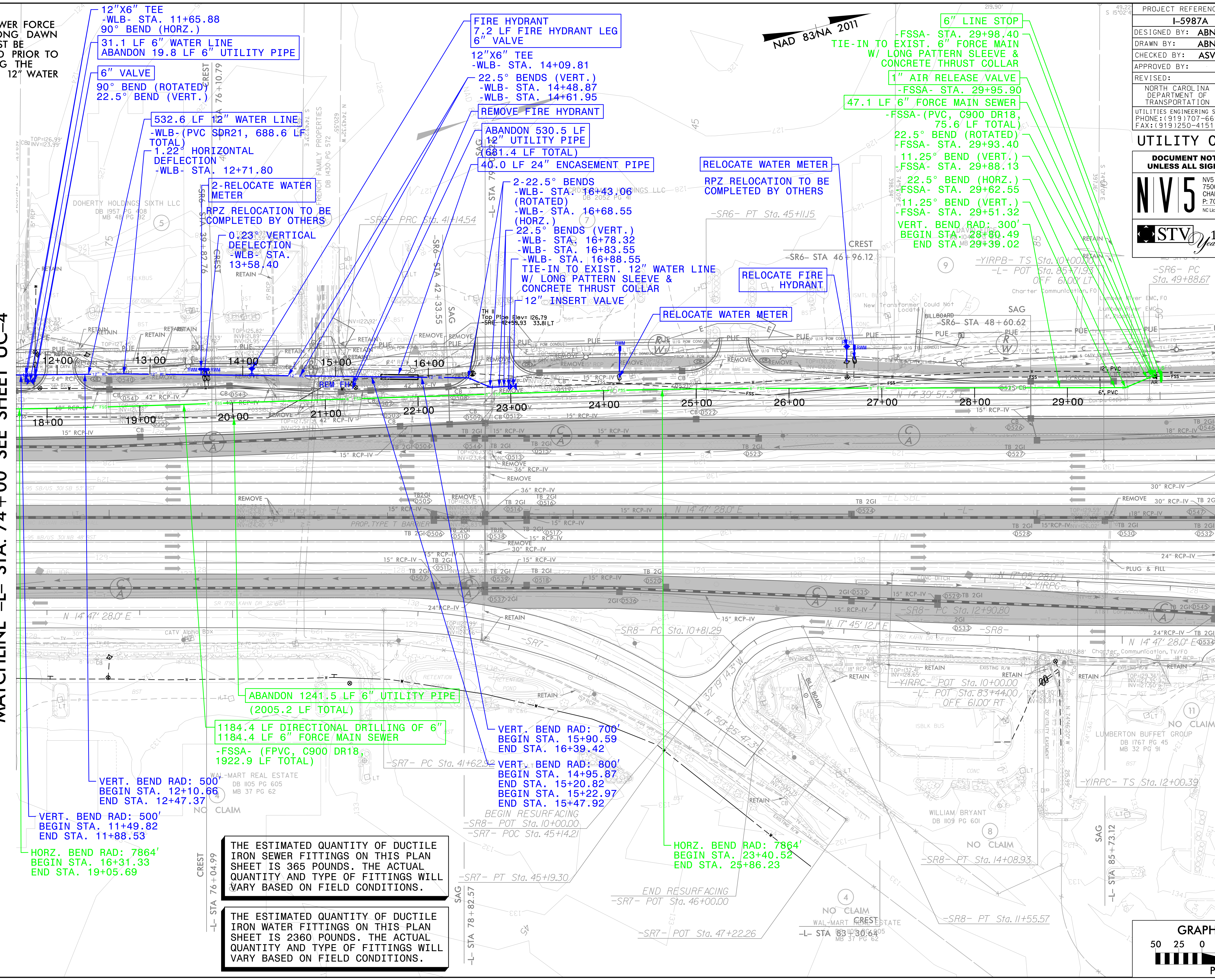
5/14/2022

4/6/2022  
I:\Projects\4020974\4020974\_0001\90\_CAD\_Models\_and\_Sheets\I-5987A\Utilities\Engineering\UC\Proj\Sheet\I-5987A\_ut\_UC05\_psh.dgn  
Naraush

NOTES:  
1. THE 6" SEWER FORCE MAIN ALONG DAWN DRIVE MUST BE RELOCATED PRIOR TO ACTIVATING THE PROPOSED 12" WATER LINE.

MATCHLINE -L- STA. 74+00 SEE SHEET UC-4

MATCHLINE -L- STA. 87+00 SEE SHEET UC-6



12"X6" TEE  
-WLB- STA. 11+65.88  
90° BEND (HORZ.)  
31.1 LF 6" WATER LINE  
ABANDON 19.8 LF 6" UTILITY PIPE

6" VALVE  
90° BEND (ROTATED)  
22.5° BEND (VERT.)

532.6 LF 12" WATER LINE  
-WLB- (PVC SPR21, 688.6 LF TOTAL)  
1.22' HORIZONTAL DEFLECTION  
-WLB- STA. 12+71.80

2-RELOCATE WATER METER  
RPZ RELOCATION TO BE COMPLETED BY OTHERS

0.23' VERTICAL DEFLECTION  
-WLB- STA. 13+58.40

FIRE HYDRANT  
7.2 LF FIRE HYDRANT LEG  
6" VALVE

12"X6" TEE  
-WLB- STA. 14+09.81  
22.5° BENDS (VERT.)  
-WLB- STA. 14+48.87  
-WLB- STA. 14+61.95

REMOVE FIRE HYDRANT  
ABANDON 530.5 LF 12" UTILITY PIPE  
(681.4 LF TOTAL)  
40.0 LF 24" ENCASEMENT PIPE

2-22.5° BENDS (ROTATED)  
-WLB- STA. 16+43.06  
-WLB- STA. 16+68.55 (HORZ.)  
22.5° BENDS (VERT.)  
-WLB- STA. 16+78.32  
-WLB- STA. 16+83.55  
-WLB- STA. 16+88.55

TIE-IN TO EXIST. 12" WATER LINE W/ LONG PATTERN SLEEVE & CONCRETE THRUST COLLAR  
12" INSERT VALVE

RELOCATE WATER METER  
RPZ RELOCATION TO BE COMPLETED BY OTHERS

RELOCATE WATER METER

RELOCATE FIRE HYDRANT

6" LINE STOP  
-FSSA- STA. 29+98.40  
TIE-IN TO EXIST. 6" FORCE MAIN W/ LONG PATTERN SLEEVE & CONCRETE THRUST COLLAR

1" AIR RELEASE VALVE  
-FSSA- STA. 29+95.90

47.1 LF 6" FORCE MAIN SEWER  
-FSSA- (PVC, C900 DR18, 75.6 LF TOTAL)  
22.5° BEND (ROTATED)  
-FSSA- STA. 29+93.40  
11.25° BEND (VERT.)  
-FSSA- STA. 29+88.13

22.5° BEND (HORZ.)  
-FSSA- STA. 29+62.55  
11.25° BEND (VERT.)  
-FSSA- STA. 29+51.32  
VERT. BEND RAD: 300'  
BEGIN STA. 28+80.49  
END STA. 29+39.02

ABANDON 1241.5 LF 6" UTILITY PIPE  
(2005.2 LF TOTAL)

1184.4 LF DIRECTIONAL DRILLING OF 6" FORCE MAIN SEWER  
-FSSA- (FPVC, C900 DR18, 1922.9 LF TOTAL)

VERT. BEND RAD: 500'  
BEGIN STA. 12+10.66  
END STA. 12+47.37

VERT. BEND RAD: 500'  
BEGIN STA. 11+49.82  
END STA. 11+88.53

HORZ. BEND RAD: 7864'  
BEGIN STA. 16+31.33  
END STA. 19+05.69

VERT. BEND RAD: 700'  
BEGIN STA. 15+90.59  
END STA. 16+39.42

VERT. BEND RAD: 800'  
BEGIN STA. 14+95.87  
END STA. 15+20.82  
BEGIN STA. 15+22.97  
END STA. 15+47.92

HORZ. BEND RAD: 7864'  
BEGIN STA. 23+40.52  
END STA. 25+86.23

THE ESTIMATED QUANTITY OF DUCTILE IRON SEWER FITTINGS ON THIS PLAN SHEET IS 365 POUNDS. THE ACTUAL QUANTITY AND TYPE OF FITTINGS WILL VARY BASED ON FIELD CONDITIONS.

THE ESTIMATED QUANTITY OF DUCTILE IRON WATER FITTINGS ON THIS PLAN SHEET IS 2360 POUNDS. THE ACTUAL QUANTITY AND TYPE OF FITTINGS WILL VARY BASED ON FIELD CONDITIONS.

PROJECT REFERENCE NO.	I-5987A
SHEET NO.	UC-5
DESIGNED BY:	ABN
DRAWN BY:	ABN
CHECKED BY:	ASV
APPROVED BY:	
REVISED:	
NORTH CAROLINA DEPARTMENT OF TRANSPORTATION	
UTILITIES ENGINEERING SECTION PHONE: (919) 707-6690 FAX: (919) 250-4151	
UTILITY CONSTRUCTION PLANS ONLY	

UTILITY CONSTRUCTION  
DOCUMENT NOT CONSIDERED FINAL  
UNLESS ALL SIGNATURES COMPLETED

NV5  
NV5 ENGINEERS & CONSULTANTS, INC.  
7500 E. INDEPENDENCE BLVD, STE 100  
CHARLOTTE, NC 28227  
P: 704.537.7300  
www.NV5.com  
NC License # F-1333

STV 100 Years  
STV Engineers, Inc.  
1600 Perimeter Park Drive  
Suite 225  
Morrisville, NC 27560  
NC License Number F-0991

