

5/14/2022

I:\Projects\4020974\4020974_0001\90_CAD Models and Sheets\I-5987A\Utilities\Engineering\UC\Proj\Sheet\I-5987A_ut_UC04_psh.dgn

NOTES:
 1. THE 6" SEWER FORCE MAIN ALONG DAWN DRIVE MUST BE RELOCATED PRIOR TO ACTIVATING THE PROPOSED 12" WATER LINE.

BEGIN TIP PROJECT I-5987A
-L- POT Sta. 67+00.00
TIE TO TIP PROJECT I-6064
-L- POT Sta. 488+46.78

NAD 83/NA 2011

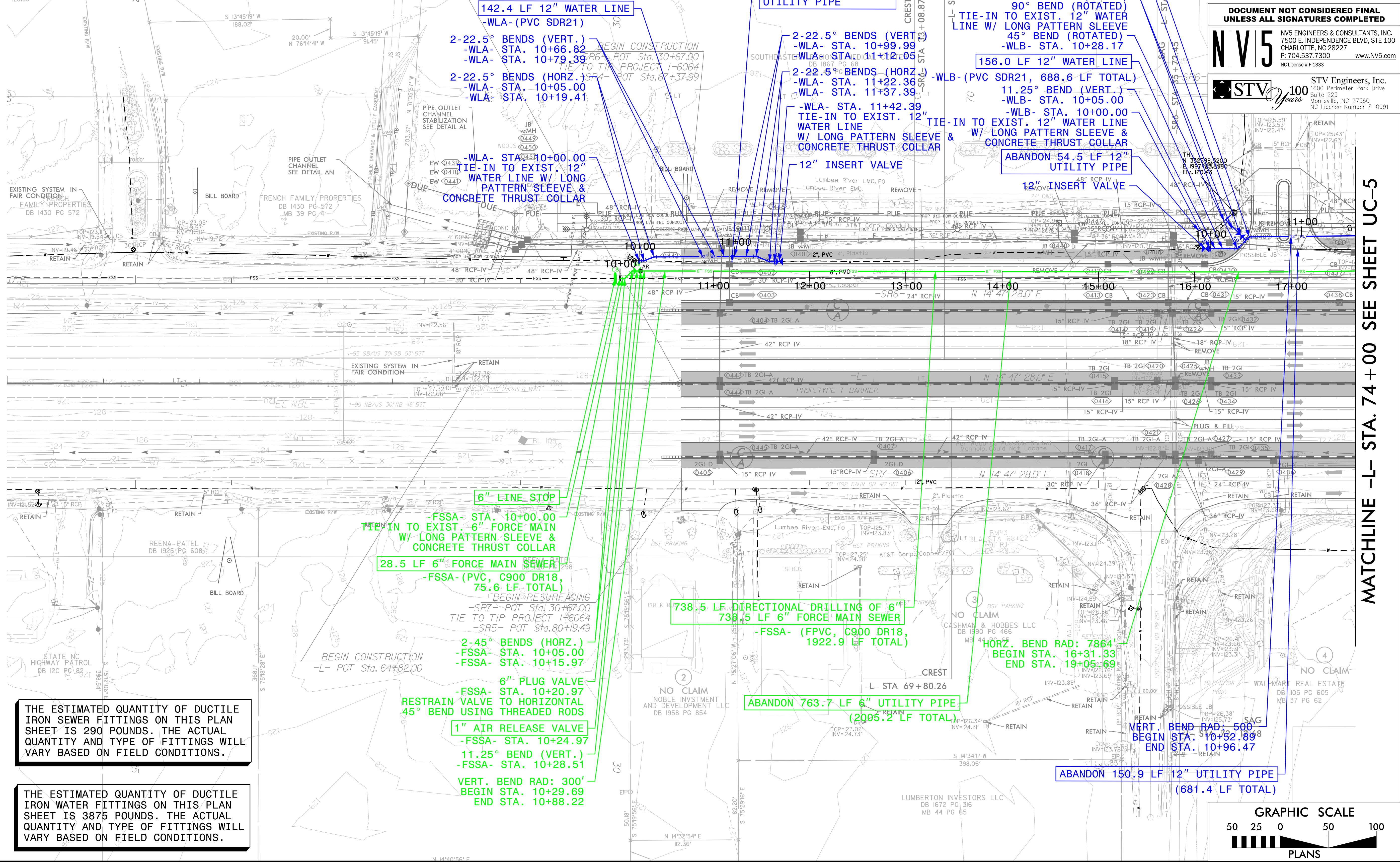
PROJECT REFERENCE NO.	SHEET NO.
I-5987A	UC-4
DESIGNED BY: ABN	
DRAWN BY: ABN	
CHECKED BY: ASV	
APPROVED BY:	
REVISED:	UTILITY CONSTRUCTION PLANS ONLY
UTILITIES ENGINEERING SEC. PHONE: (919) 707-6690 FAX: (919) 250-4151	

UTILITY CONSTRUCTION

DOCUMENT NOT CONSIDERED FINAL UNLESS ALL SIGNATURES COMPLETED

NV5
 NV5 ENGINEERS & CONSULTANTS, INC.
 7500 E. INDEPENDENCE BLVD, STE 100
 CHARLOTTE, NC 28227
 P: 704.537.7300 www.NV5.com
 NC License # F-1333

STV 100 Years
 STV Engineers, Inc.
 1600 Perimeter Park Drive
 Suite 225
 Morrisville, NC 27560
 NC License Number F-0991



142.4 LF 12" WATER LINE
 -WLA- (PVC SDR21)

- 2-22.5° BENDS (VERT.)
 -WLA- STA. 10+66.82
 -WLA- STA. 10+79.39
- 2-22.5° BENDS (HORIZ.)
 -WLA- STA. 10+05.00
 -WLA- STA. 10+19.41

-WLA- STA. 10+00.00
 TIE-IN TO EXIST. 12" WATER LINE W/ LONG PATTERN SLEEVE & CONCRETE THRUST COLLAR

ABANDON 140.6 LF 12" UTILITY PIPE

- 2-22.5° BENDS (VERT.)
 -WLA- STA. 10+99.99
 -WLA- STA. 11+12.05
- 2-22.5° BENDS (HORIZ.)
 -WLA- STA. 11+22.36
 -WLA- STA. 11+37.39
- WLA- STA. 11+42.39
 TIE-IN TO EXIST. 12" WATER LINE W/ LONG PATTERN SLEEVE & CONCRETE THRUST COLLAR

12" INSERT VALVE

45° BEND (ROTATED)
 -WLB- STA. 10+45.79

36.7 LF 12" WATER LINE
 12" VALVE
 (PVC SDR21)
 12"X12" TEE
 90° BEND (ROTATED)
 -WLB- STA. 10+40.79
 11.25° BEND (VERT.)
 -WLB- STA. 10+28.17

156.0 LF 12" WATER LINE
 -WLB- (PVC SDR21, 688.6 LF TOTAL)

- 11.25° BEND (VERT.)
 -WLB- STA. 10+05.00
- WLB- STA. 10+00.00
 TIE-IN TO EXIST. 12" WATER LINE W/ LONG PATTERN SLEEVE & CONCRETE THRUST COLLAR

ABANDON 54.5 LF 12" UTILITY PIPE

12" INSERT VALVE

6" LINE STOP

-FSSA- STA. 10+00.00
 TIE-IN TO EXIST. 6" FORCE MAIN W/ LONG PATTERN SLEEVE & CONCRETE THRUST COLLAR

28.5 LF 6" FORCE MAIN SEWER
 -FSSA- (PVC, C900 DR18, 75.6 LF TOTAL)

BEGIN RESURFACING
 -SR7- POT Sta. 30+67.00
 TIE TO TIP PROJECT I-6064
 -SR5- POT Sta. 80+19.49

- 2-45° BENDS (HORIZ.)
 -FSSA- STA. 10+05.00
 -FSSA- STA. 10+15.97

6" PLUG VALVE
 -FSSA- STA. 10+20.97
 RESTRAIN VALVE TO HORIZONTAL
 45° BEND USING THREADED RODS

1" AIR RELEASE VALVE
 -FSSA- STA. 10+24.97

11.25° BEND (VERT.)
 -FSSA- STA. 10+28.51

VERT. BEND RAD: 300'
 BEGIN STA. 10+29.69
 END STA. 10+88.22

738.5 LF DIRECTIONAL DRILLING OF 6" FORCE MAIN SEWER
 -FSSA- (FPVC, C900 DR18, 1922.9 LF TOTAL)

ABANDON 763.7 LF 6" UTILITY PIPE
 (2005.2 LF TOTAL)

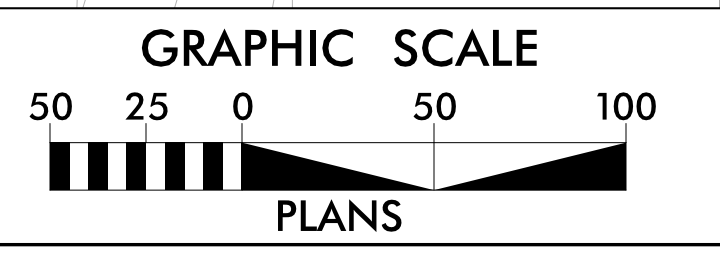
HORIZ. BEND RAD: 7864
 BEGIN STA. 16+31.33
 END STA. 19+05.69

VERT. BEND RAD: 500'
 BEGIN STA. 10+52.89
 END STA. 10+96.47

ABANDON 150.9 LF 12" UTILITY PIPE
 (681.4 LF TOTAL)

THE ESTIMATED QUANTITY OF DUCTILE IRON SEWER FITTINGS ON THIS PLAN SHEET IS 290 POUNDS. THE ACTUAL QUANTITY AND TYPE OF FITTINGS WILL VARY BASED ON FIELD CONDITIONS.

THE ESTIMATED QUANTITY OF DUCTILE IRON WATER FITTINGS ON THIS PLAN SHEET IS 3875 POUNDS. THE ACTUAL QUANTITY AND TYPE OF FITTINGS WILL VARY BASED ON FIELD CONDITIONS.



MATCHLINE -L- STA. 74+00 SEE SHEET UC-5