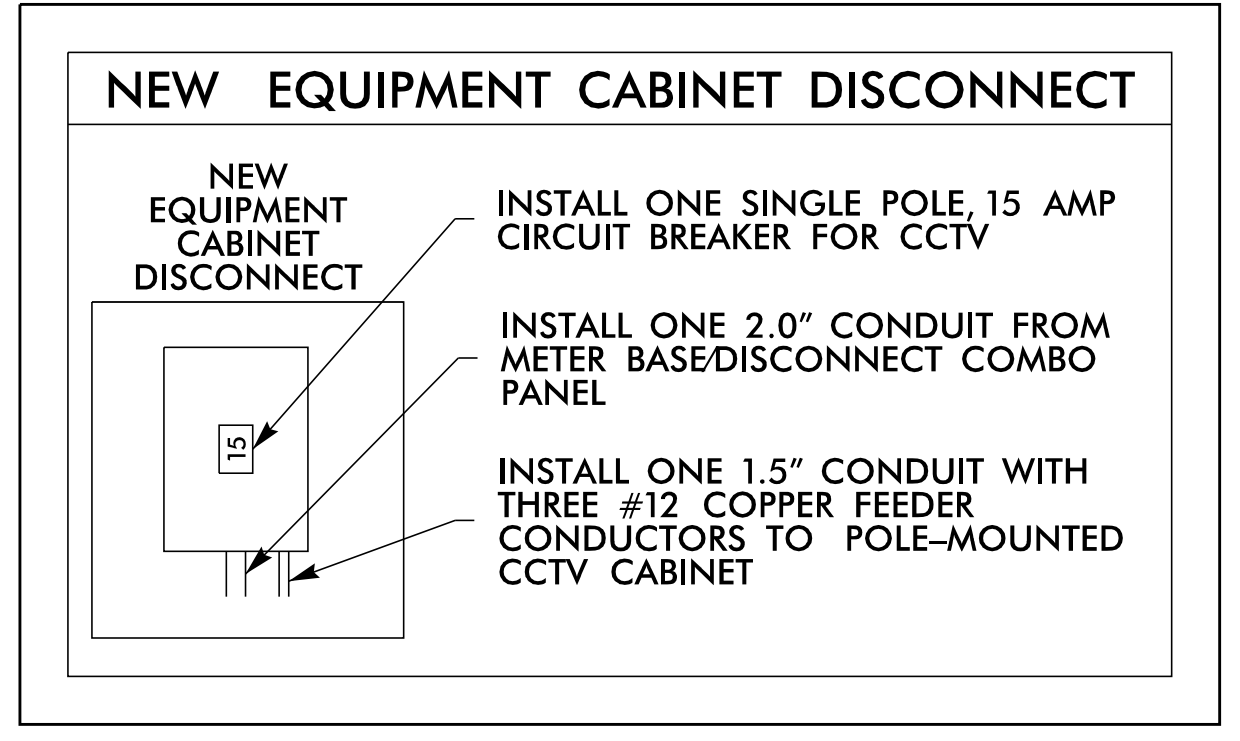
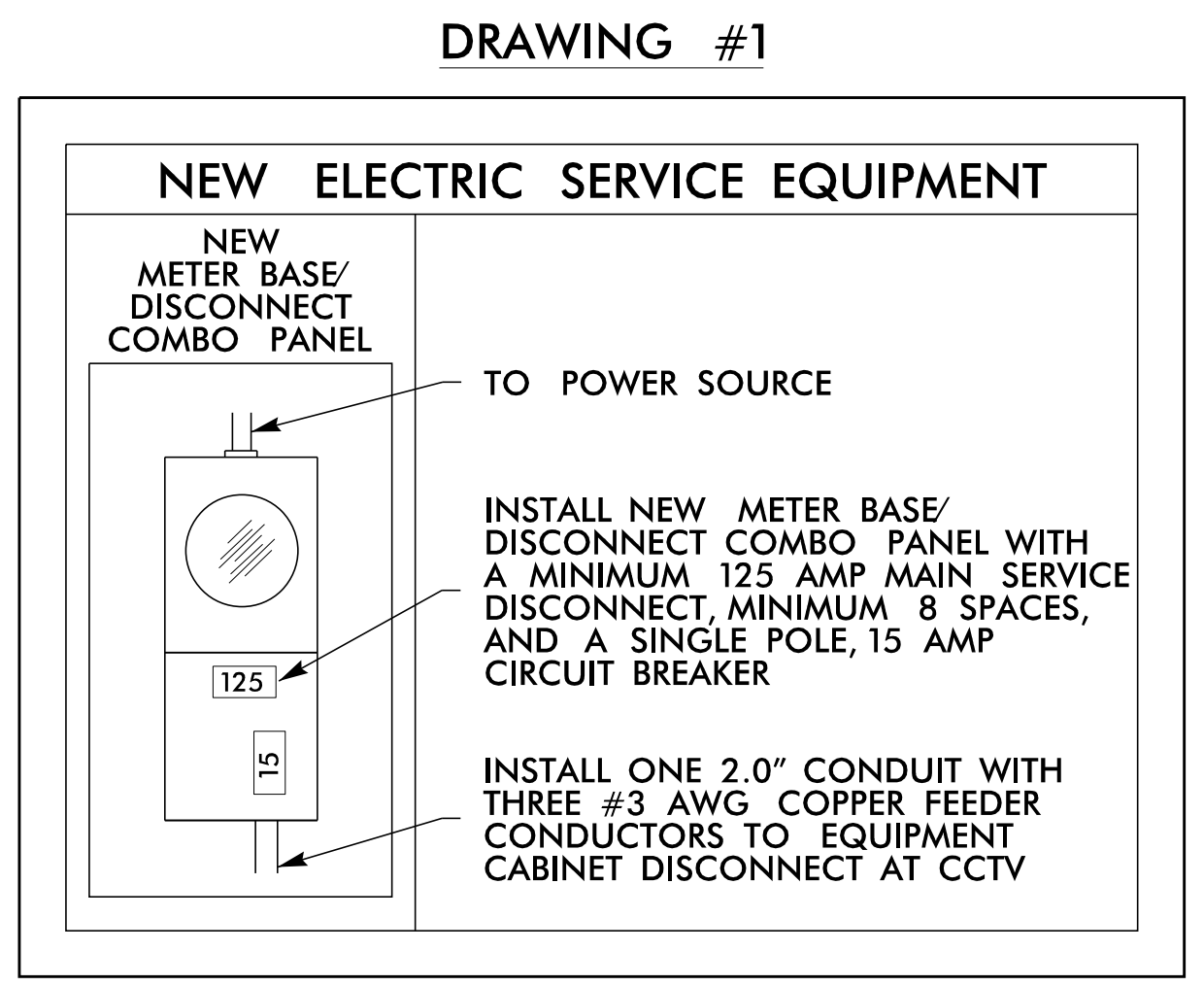


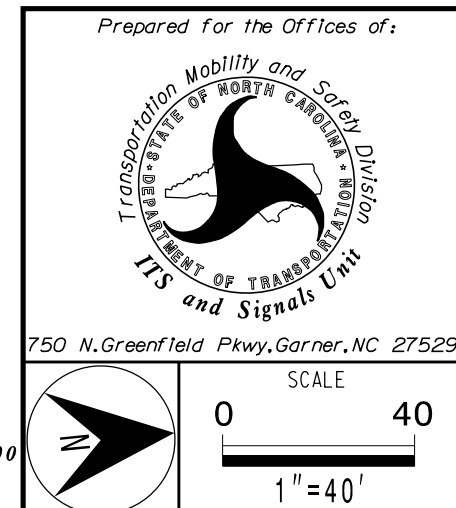
**CCTV-2 GPS COORDINATES**  
 34.70040° N  
 78.99780° W

SEE DRAWING 2

SEE DRAWING 1



- NOTES:**
1. POWER COMPANY CONTACT - LUMBEE RIVER EMC - KEN ROWELL (910) 843-7953
  2. MAINTAIN A MINIMUM OF 6 FEET FROM THE EDGE OF PAVEMENT WHEN TRENCHING PARALLEL TO THE ROADWAY.
  3. CONTACT DIVISION 6 TRAFFIC ENGINEER FRANK D. WEST, JR. AT (910) 364-0606 TO CONFIRM THE LOCATION OF THE CCTV/DMS.
  4. DO NOT INSTALL CONDUIT OR JUNCTION BOXES UNTIL THE PROPOSED LOCATION OF THE CCTV CAMERA OR DMS HAVE BEEN CONFIRMED BY THE DIVISION TRAFFIC ENGINEER.
  5. MOUNT THE CCTV CAMERA 45 FEET ABOVE GRADE.
  6. MOUNT THE CCTV CAMERA 5 FEET BELOW THE TOP OF THE POLE.
  7. INSTALL CCTV POLE A MINIMUM OF 8 FEET BEHIND GUARDRAIL.



**I-95 CCTV-2 (Mile-Marker 24)**

Division 6 Robeson County Lumberton

PLAN DATE: April 2022 REVIEWED BY: S.G. Haynie

PREPARED BY: O. Drobny REVIEWED BY: J. S. Cole

| REVISIONS | INIT. | DATE |
|-----------|-------|------|
|           |       |      |

4/8/2022

DOCUMENT NOT CONSIDERED FINAL UNLESS ALL SIGNATURES COMPLETED

SEAL

PROFESSIONAL ENGINEER

STEVEN G. HAYNIE

029531

4/8/2022



3/24/2022  
 R:\ITS\6665\gmp\plan\_sheets\I-5987A\ITS\_psh\_07\_M024.dgn  
 3:37:53 PM