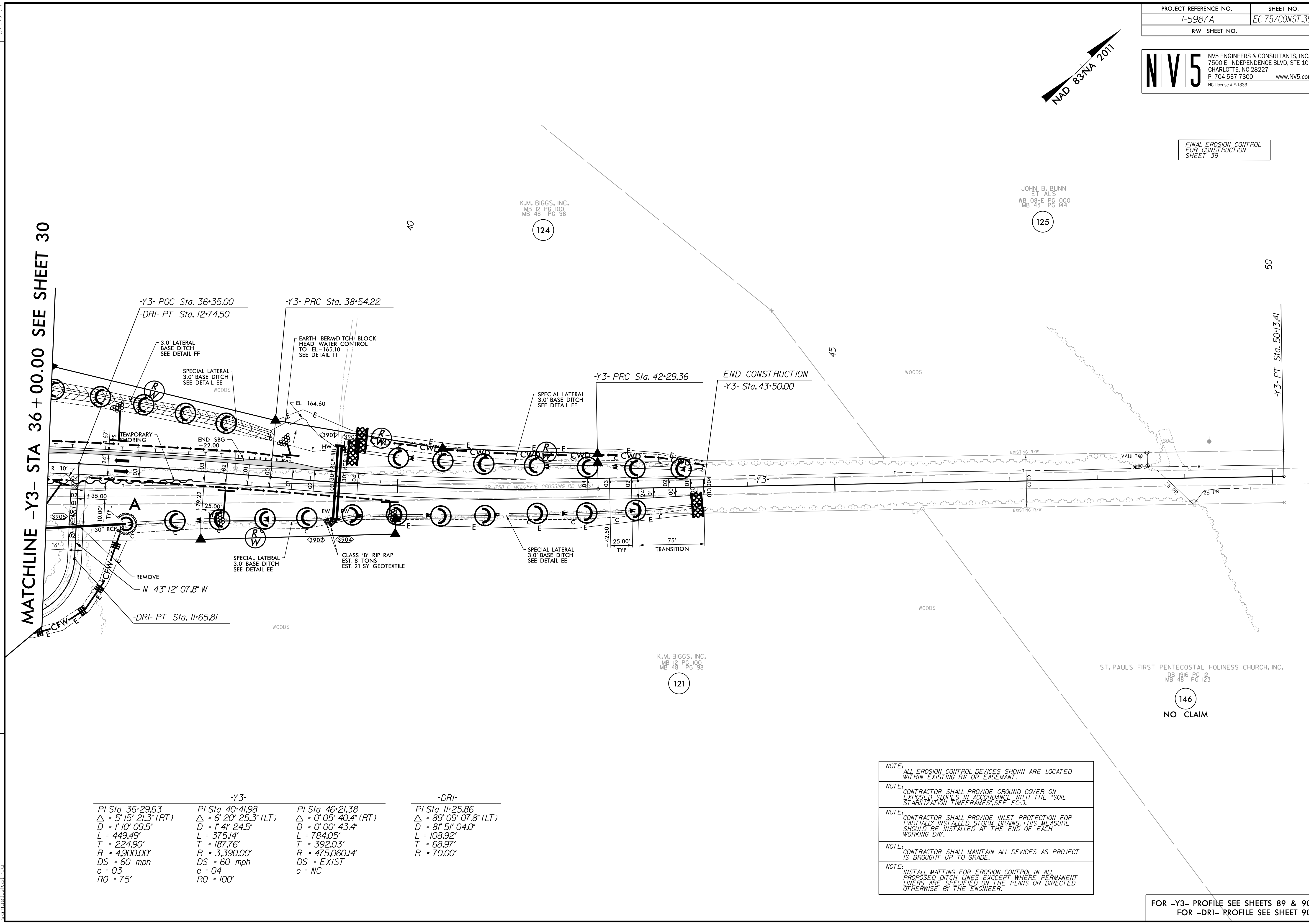




FINAL EROSION CONTROL FOR CONSTRUCTION SHEET 39



MATCHLINE -Y3- STA 36 + 00.00 SEE SHEET 30

-Y3- PT Sta. 50+13.41

REVISIONS

-Y3-			-DRI-	
PI Sta 36+29.63	PI Sta 40+41.98	PI Sta 46+21.38	PI Sta 11+25.86	
$\Delta = 5^{\circ} 15' 21.3''$ (RT)	$\Delta = 6^{\circ} 20' 25.3''$ (LT)	$\Delta = 0^{\circ} 05' 40.4''$ (RT)	$\Delta = 89^{\circ} 09' 07.8''$ (LT)	
D = 1' 10' 09.5"	D = 1' 41' 24.5"	D = 0' 00' 43.4"	D = 81' 51' 04.0"	
L = 449.49'	L = 375.14'	L = 784.05'	L = 108.92'	
T = 224.90'	T = 187.76'	T = 392.03'	T = 68.97'	
R = 4,900.00'	R = 3,390.00'	R = 475,060.14'	R = 70.00'	
DS = 60 mph	DS = 60 mph	DS = EXIST		
e = 0.3	e = 0.4	e = NC		
RO = 75'	RO = 100'			

- NOTE: ALL EROSION CONTROL DEVICES SHOWN ARE LOCATED WITHIN EXISTING RW OR EASEMENT.
- NOTE: CONTRACTOR SHALL PROVIDE GROUND COVER ON EXPOSED SLOPES IN ACCORDANCE WITH THE "SOIL STABILIZATION TIMEFRAMES". SEE EC-3.
- NOTE: CONTRACTOR SHALL PROVIDE INLET PROTECTION FOR PARTIALLY INSTALLED STORM DRAINS. THIS MEASURE SHOULD BE INSTALLED AT THE END OF EACH WORKING DAY.
- NOTE: CONTRACTOR SHALL MAINTAIN ALL DEVICES AS PROJECT IS BROUGHT UP TO GRADE.
- NOTE: INSTALL MATTING FOR EROSION CONTROL IN ALL PROPOSED DITCH LINES EXCEPT WHERE PERMANENT LINERS ARE SPECIFIED ON THE PLANS OR DIRECTED OTHERWISE BY THE ENGINEER.

FOR -Y3- PROFILE SEE SHEETS 89 & 90
 FOR -DRI- PROFILE SEE SHEET 90

8/17/99
 4/7/2022
 R:\E:\Commentary\Design\15987A_EC_PSH_075.dgn
 samuel.skalata