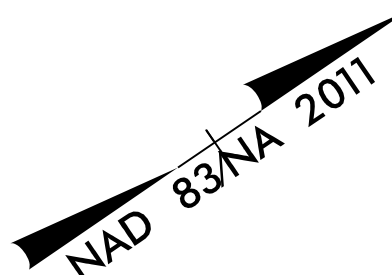
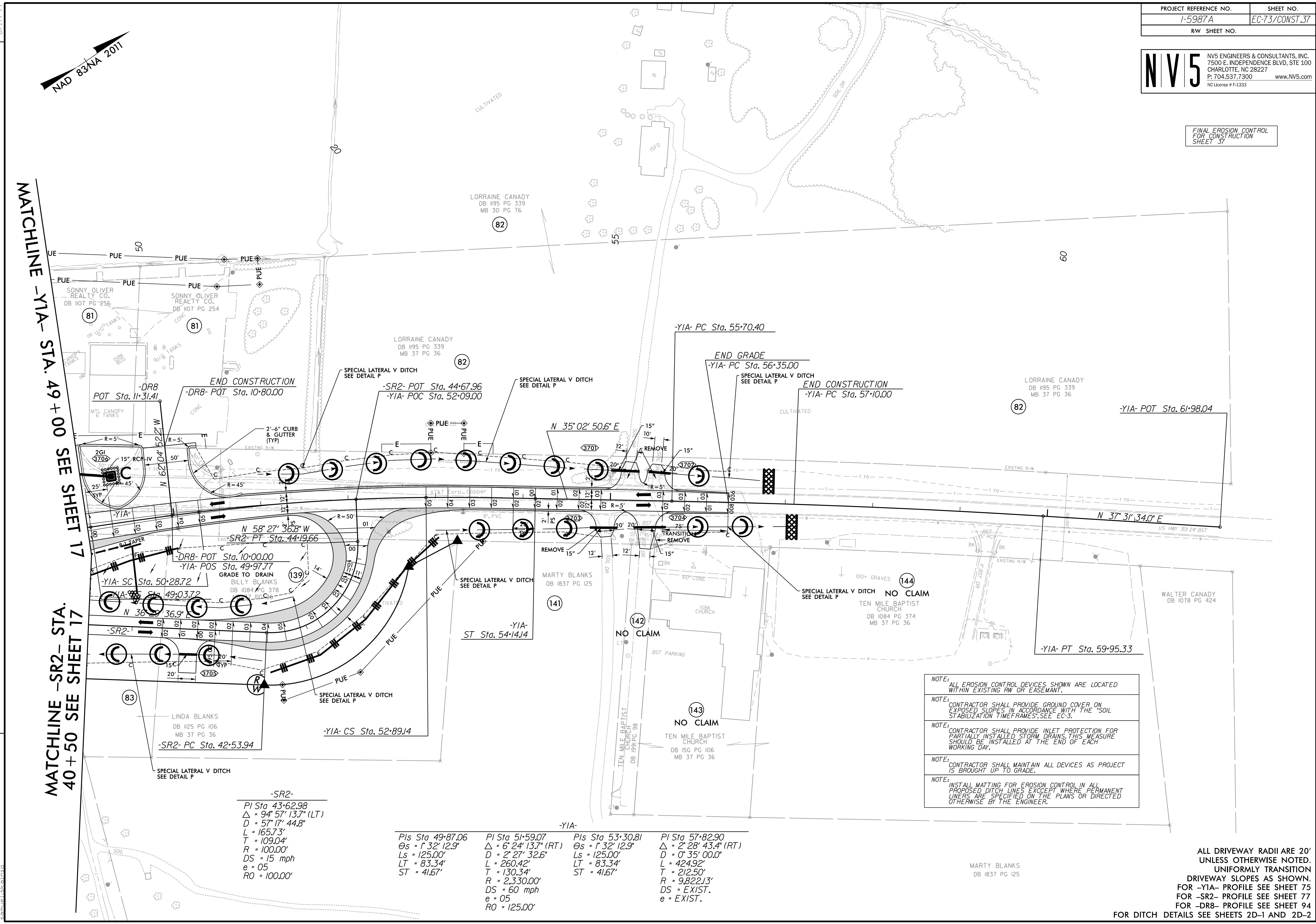


FINAL EROSION CONTROL FOR CONSTRUCTION SHEET 37



MATCHLINE -YIA- STA. 49 + 00 SEE SHEET 17
 MATCHLINE -SR2- STA. 40 + 50 SEE SHEET 17

REVISIONS
 ROW REVISION - 10/22/2021 - CHANGED PARCEL 138 TO B1 PARCEL 138 IS REMOVED (NOT USED) - CDA
 ROW REVISION - 10/22/2021 - CHANGED PARCEL 140 TO B2 PARCEL 140 IS REMOVED (NOT USED) - CDA
 ROW REVISION - 10/22/2021 - MODIFIED PUE ON PARCEL 81 AND PARCEL 82 - CDA



- NOTE: ALL EROSION CONTROL DEVICES SHOWN ARE LOCATED WITHIN EXISTING RW OR EASEMENT.
- NOTE: CONTRACTOR SHALL PROVIDE GROUND COVER ON EXPOSED SLOPES IN ACCORDANCE WITH THE "SOIL STABILIZATION TIMEFRAMES" SEE EC-3.
- NOTE: CONTRACTOR SHALL PROVIDE INLET PROTECTION FOR PARTIALLY INSTALLED STORM DRAINS. THIS MEASURE SHOULD BE INSTALLED AT THE END OF EACH WORKING DAY.
- NOTE: CONTRACTOR SHALL MAINTAIN ALL DEVICES AS PROJECT IS BROUGHT UP TO GRADE.
- NOTE: INSTALL MATTING FOR EROSION CONTROL IN ALL PROPOSED DITCH LINES EXCEPT WHERE PERMANENT LINERS ARE SPECIFIED ON THE PLANS OR DIRECTED OTHERWISE BY THE ENGINEER.

-SR2-
 PI Sta 43+62.98
 $\Delta = 94^{\circ} 57' 13.7''$ (LT)
 $D = 57' 17'' 44.8''$
 $L = 165.73'$
 $T = 109.04'$
 $R = 100.00'$
 $DS = 15$ mph
 $e = 05$
 $RO = 100.00'$

PIs Sta 49+87.06
 $\Theta_s = 1^{\circ} 32' 12.9''$
 $L_s = 125.00'$
 $LT = 83.34'$
 $ST = 41.67'$

PI Sta 51+59.07
 $\Delta = 6^{\circ} 24' 13.7''$ (RT)
 $D = 2^{\circ} 27' 32.6''$
 $L = 260.42'$
 $T = 130.34'$
 $R = 2,330.00'$
 $DS = 60$ mph
 $e = 05$
 $RO = 125.00'$

-YIA-
 PIs Sta 53+30.81
 $\Theta_s = 1^{\circ} 32' 12.9''$
 $L_s = 125.00'$
 $LT = 83.34'$
 $ST = 41.67'$

PI Sta 57+82.90
 $\Delta = 2^{\circ} 28' 43.4''$ (RT)
 $D = 0^{\circ} 35' 00.0''$
 $L = 424.92'$
 $T = 212.50'$
 $R = 9,822.13'$
 $DS = EXIST.$
 $e = EXIST.$

ALL DRIVEWAY RADII ARE 20'
 UNLESS OTHERWISE NOTED.
 UNIFORMLY TRANSITION
 DRIVEWAY SLOPES AS SHOWN.
 FOR -YIA- PROFILE SEE SHEET 75
 FOR -SR2- PROFILE SEE SHEET 77
 FOR -DR8- PROFILE SEE SHEET 94
 FOR DITCH DETAILS SEE SHEETS 2D-1 AND 2D-2